

## Installation, Operation and Maintenance Manual

Please read and save these instructions for future reference. Read carefully before attempting to assemble, install, operate or maintain the product described. Protect yourself and others by observing all safety information. Failure to comply with these instructions will result in voiding of the product warranty and may result in personal injury and/or property damage.

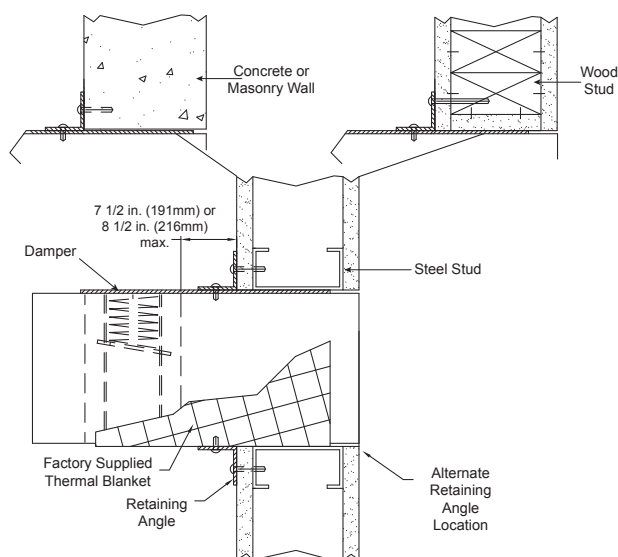
Approved installations for curtain fire dampers

- 1) Through the grille access and
- 2) Installation in continuing duct.

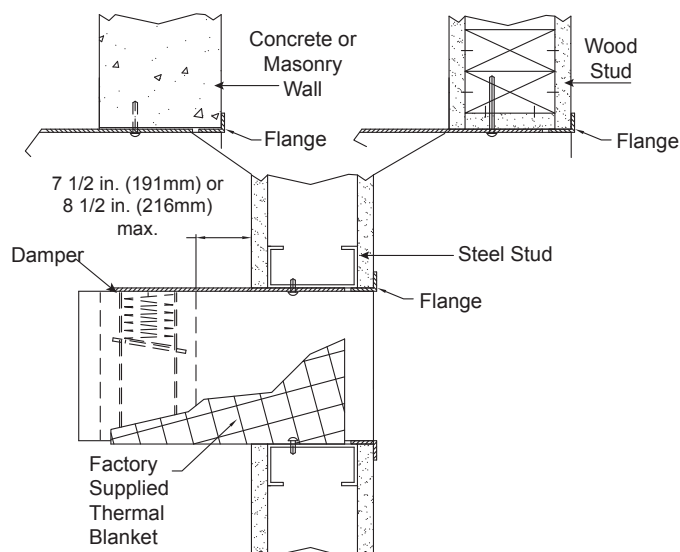
The following maximum distances outside the barrier apply:

- Steel stud and masonry barriers:
  - 8½ in. (216mm) provided the width and height of the damper are both 24 in. (610mm) or less and the damper sleeve is 20 gauge
  - 7½ in. (191mm) in all other instances
- Wood stud walls: 6½ in. (165mm)

For access to inspect the damper and fusible link, refer to the requirements of NFPA 90A.

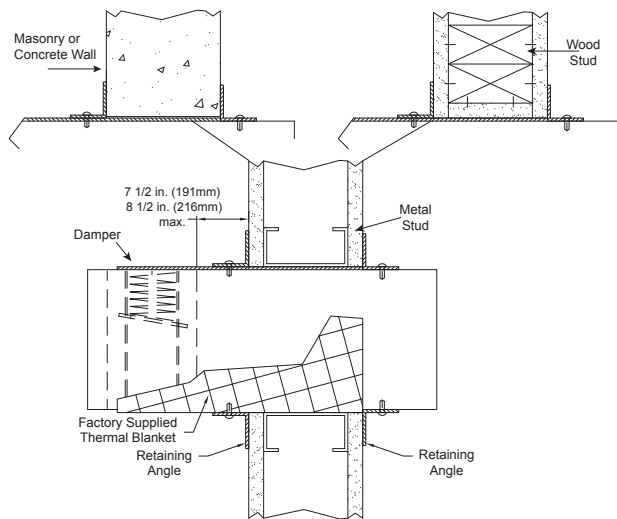


**Type A- Vertical Mount, Duct Terminates  
Single Angle Method**

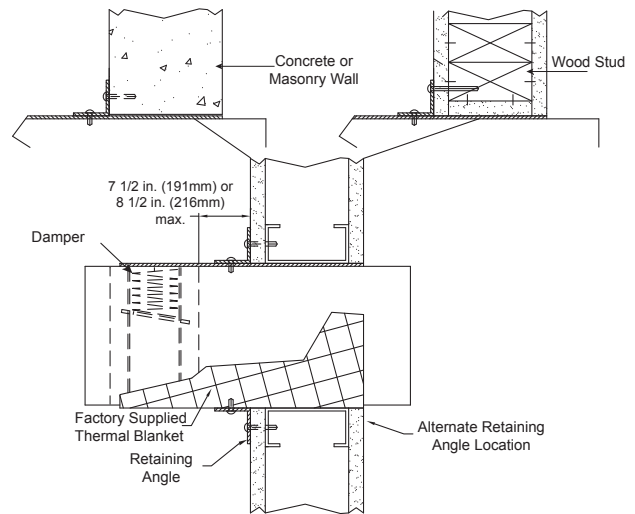


**Type A- Vertical Mount, Duct Terminates  
Flange Method**

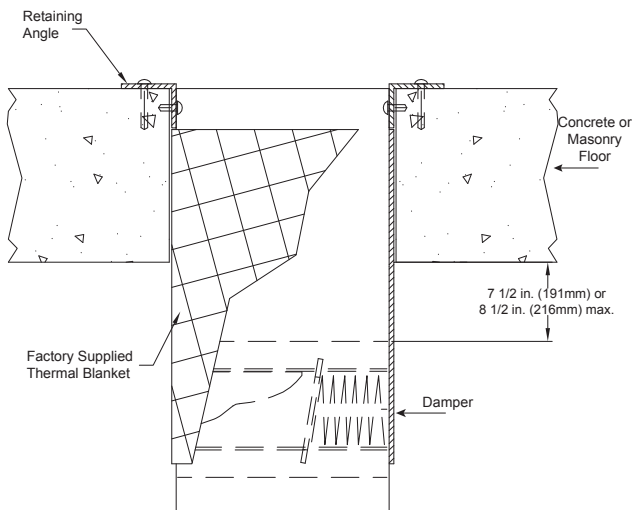
## Type A cont....



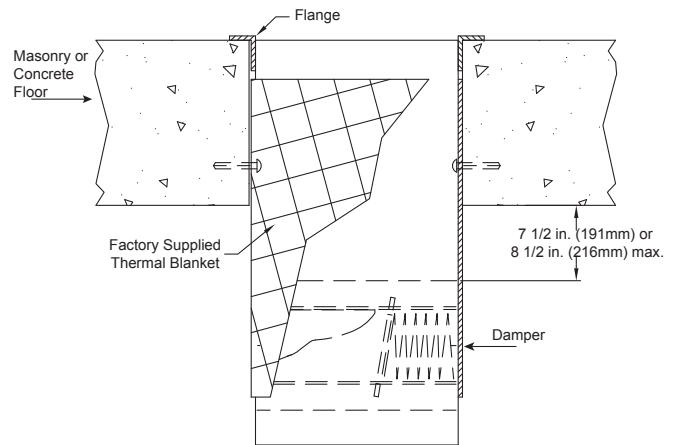
**Type A- Vertical Mount, Thru Duct with Two Retaining Angles**



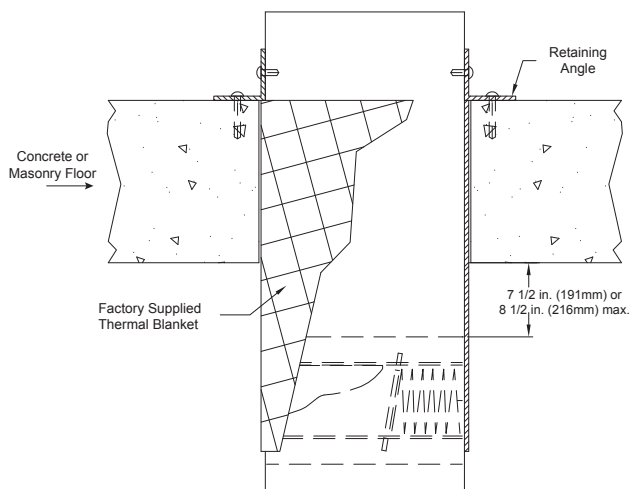
**Type A- Vertical Mount, Thru Duct with Single Retaining Angle**



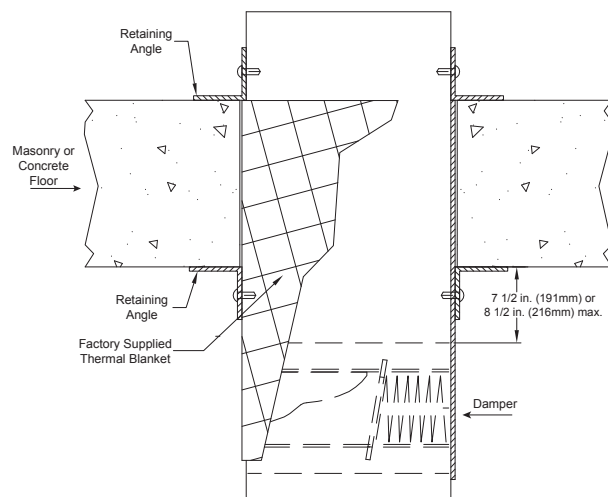
**Type A - Horizontal Mount Below Floor/Wall, Duct Terminates Single Angle Method**



**Type A - Horizontal Mount Below Floor/Wall, Duct Terminates Flange Method**

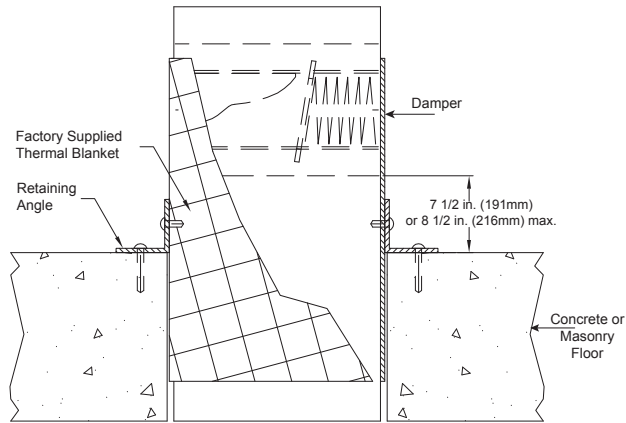


**Type A - Horizontal Mount Below Floor/Wall, Thru Duct with Single Retaining Angle**

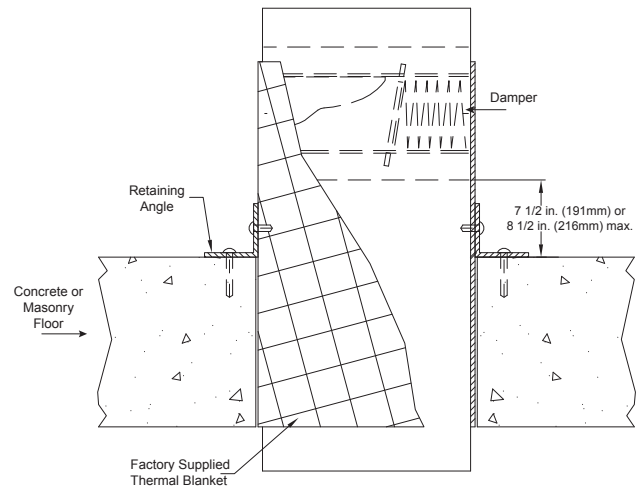


**Type A - Horizontal Mount Below Floor/Wall, Thru Duct with Two Retaining Angles**

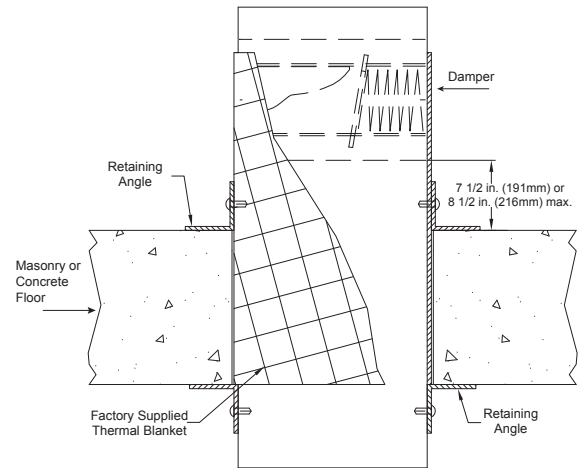
## Type A cont....



**Type A - Horizontal Mount Above Floor/Wall, Duct Terminates Single Angle Method**

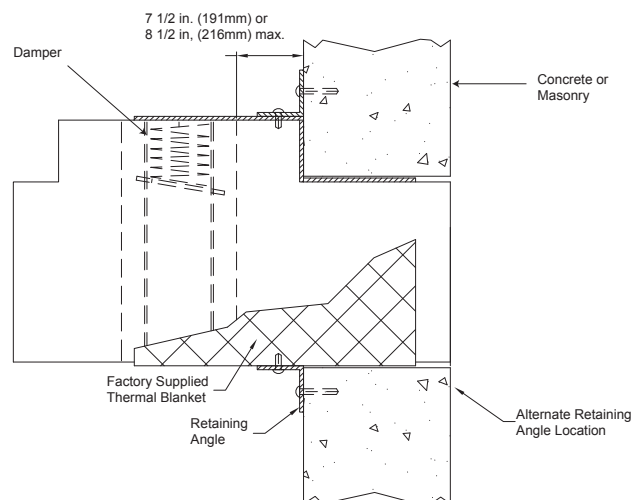


**Type A - Horizontal Mount Above Floor/Wall, Thru Duct with Single Retaining Angle**

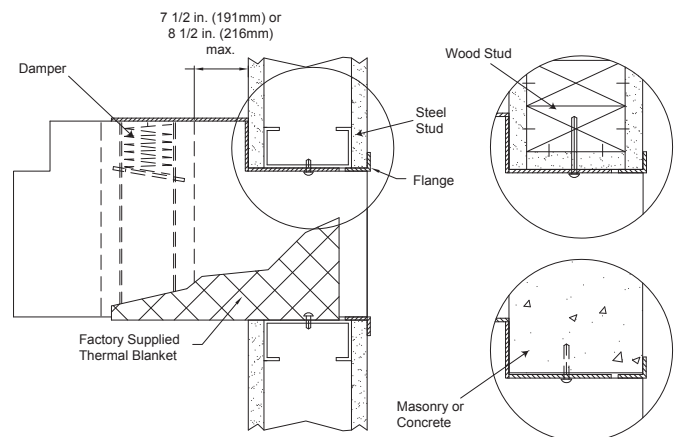


**Type A - Horizontal Mount Above Floor/Wall, Thru Duct with Two Retaining Angles**

## Type B2

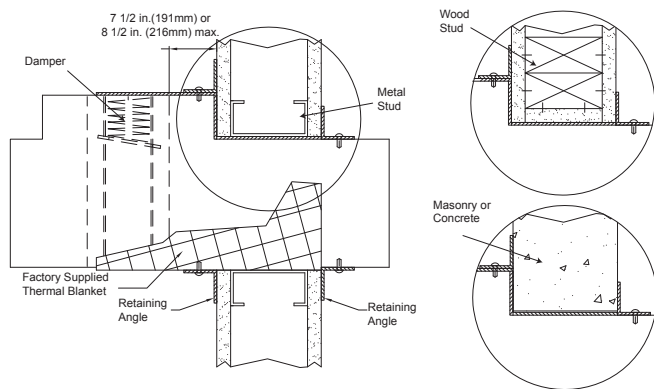


**Type B2- Vertical Mount, Duct Terminates Single Angle Method**

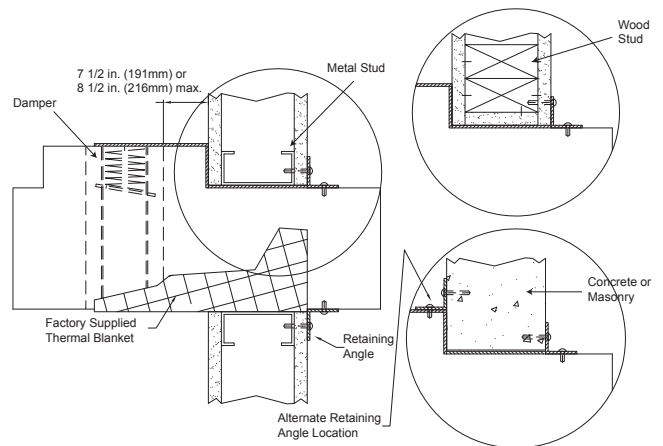


**Type B2- Vertical Mount, Duct Terminates Flange Method**

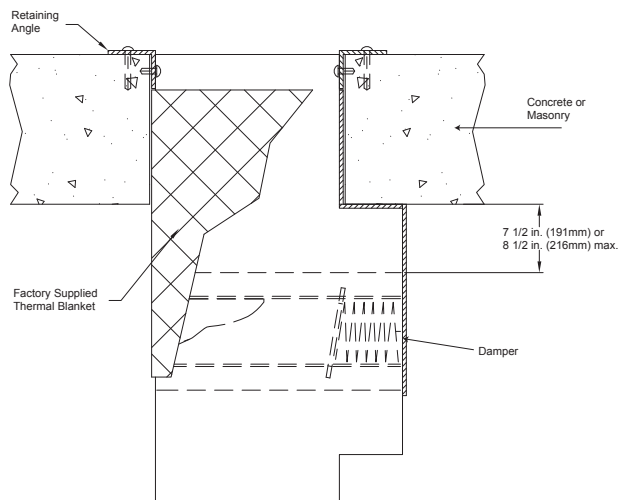
## Type B2 cont....



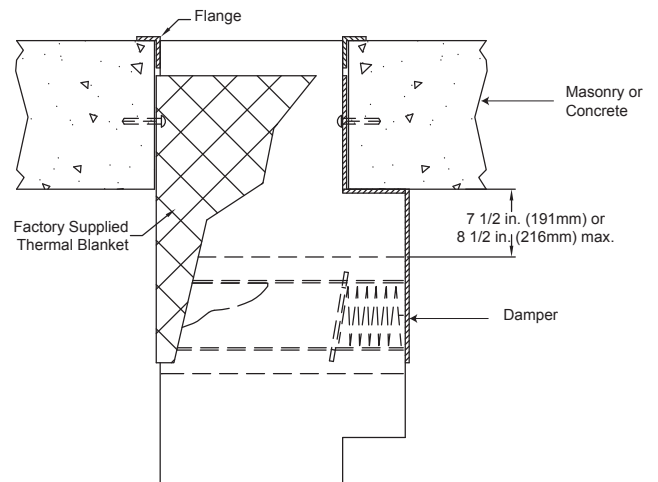
**Type B2- Vertical Mount, Thru Duct with Two Retaining Angles**



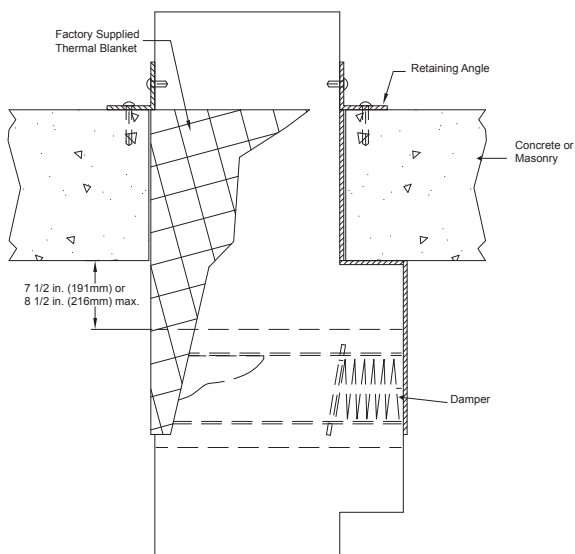
**Type B2- Vertical Mount, Thru Duct with Single Retaining Angle**



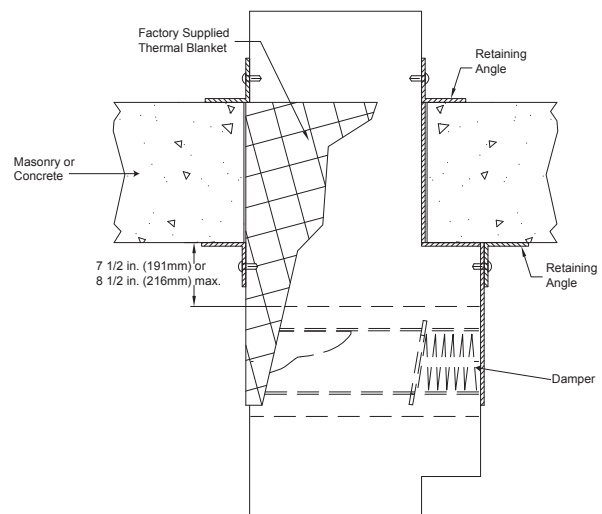
**Type B2 - Horizontal Mount Below Floor/Wall, Duct Terminates Single Angle Method**



**Type B2 - Horizontal Mount Below Floor/Wall, Duct Terminates Flange Method**

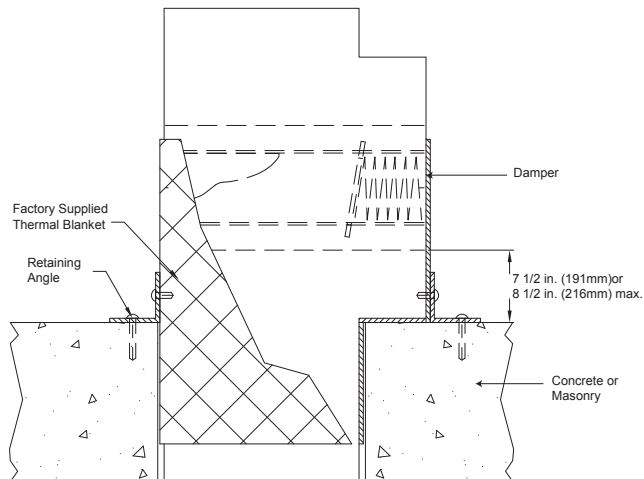


**Type B2 - Horizontal Mount Below Floor/Wall, Thru Duct with Single Retaining Angle**

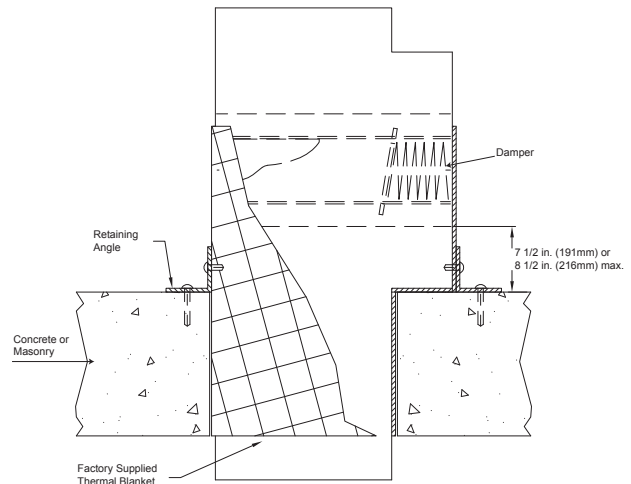


**Type B2 - Horizontal Mount Below Floor/Wall, Thru Duct with Two Retaining Angles**

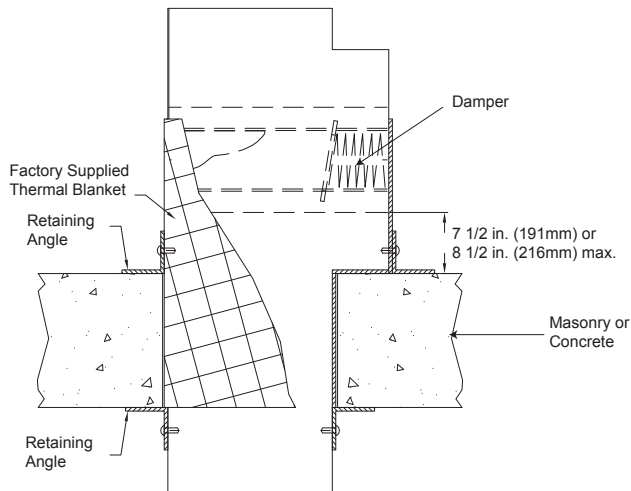
## Type B2 cont....



**Type B2 - Horizontal Mount Above Floor/Wall, Duct Terminates Single Angle Method**



**Type B2 - Horizontal Mount Above Floor/Wall, Thru Duct with Single Retaining Angle**



**Type B2 - Horizontal Mount Above Floor/Wall, Thru Duct with Two Retaining Angles**

## Our Commitment

*As a result of our commitment to continuous improvement, Greenheck reserves the right to change specifications without notice.*

Product warranties can be found online at [Greenheck.com](http://Greenheck.com), either on the specific product page or in the literature section of the website at [Greenheck.com/Resources/Library/Literature](http://Greenheck.com/Resources/Library/Literature).

