

Application

The primary purpose of duct smoke detection is to prevent injury, panic, and property damage by reducing the spread (recirculation) of smoke. The detector samples air currents passing through a duct and gives dependable performance for management of smoke and combination fire smoke dampers. Duct smoke detection can also serve to protect the air conditioning system itself from fire and smoke damage.

The No Flow Smoke Detector is a low profile photoelectric smoke detector with a B114LP base is listed to UL 268A specifically for use in no flow or low flow air handling systems. The detector shall operate at air velocities up to 3,000 fpm (15.2 m/s). It can be locally testing using a magnet on the 2151 sensor head.

Features

- Field sensitivity metering of detector to meet the requirements of NFPA 72 with the use of SENS-RDR
- Designed for mounting on a standard electrical box
- Removable cover and insect screen for field cleaning
- Low profile smoke detector design
- Low standby current
- Two LEDs blink in standby

Specifications

Type:	Photoelectric
Air Duct Velocity:	0-3,000 fpm (0 to 15.2 m/s)
Operating Temperature Range:	32° to 120°F (0 to 49°C)
Operating Humidity Range:	10% to 93% RH
Operation Voltage:	120V
Dimensions:	6.1 in. (155mm) detector base

Ordering Options

Factory Mounted

Smoke detector will be wired to a 4 x 4 handi-box. The closure device (if RRL or TOR) will also be wired to the handi-box. Dampers provided with the smoke detector will include single point wiring as standard.

Shipped Loose

Shipped loose smoke detector will include the detector only (no mounting hardware or bracket seals). Note: Dampers ordered with a shipped loose detector will have the standard sleeve length, not a longer sleeve to accommodate the smoke detector installation. If smoke detectors are intended to be field mounted on the damper sleeve, the damper sleeve length and "A" dimension will need to be manually changed to the requirements indicated under "Sleeve Length".

Part Numbers

Smoke Detector	Smoke Detector Kit
383227	877568

See www.systemsensor.com for more information.



Listings

UL listed: S911

CSFM: 7272-1653-0122

Note: This smoke detector is non-addressable.

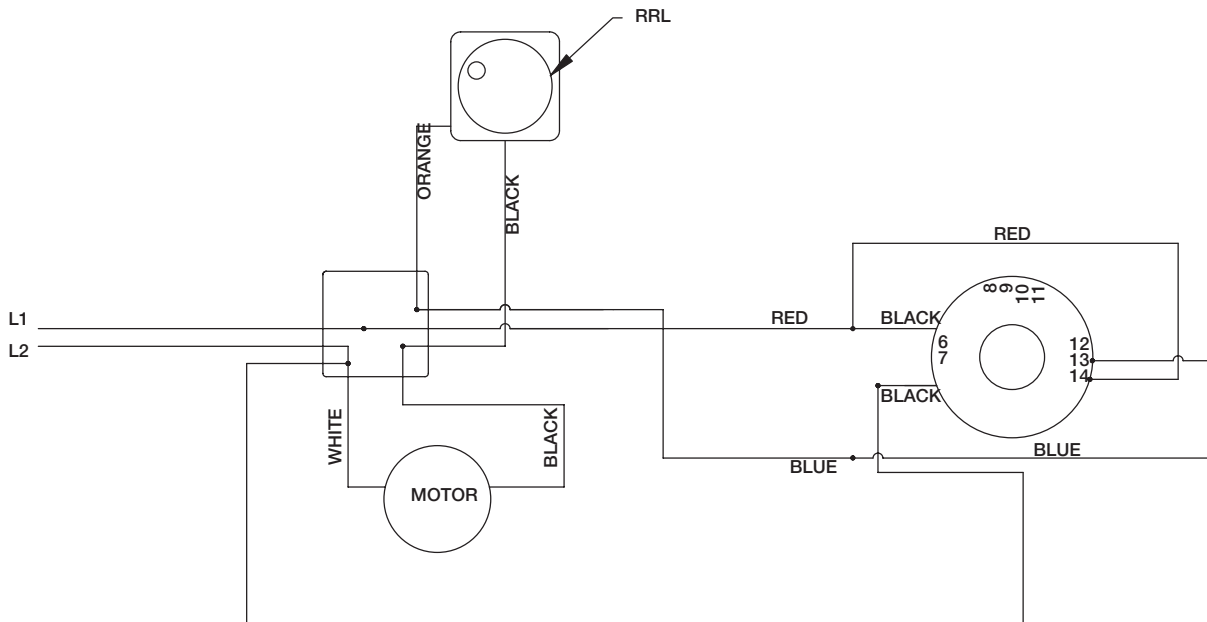


Sizing Information

Actuator Mounting	Closure Device	Recommended Minimum Sleeve Length	Minimum Damper Location	Minimum Damper Width	Minimum Damper Height
External	None, RRL, RRL/OCI, TOR, or Fusible Link	21 in. (533 mm)	13 in. (330 mm)	6 in. (152 mm)	8 in. (203 mm)
External	None, RRL, RRL/OCI, TOR, or Fusible Link	24 in. (610 mm)	13 in. (330 mm)	6 in. (152 mm)	less than 12 in. (305 mm)
External	None, RRL, RRL/OCI, TOR, or Fusible Link	21 in. (51 mm)	9½ in. (241 mm)	6 in. (152 mm)	12 in. (305 mm) and greater
Internal*	None or RRL	16 in. (406 mm)	7.188 in. (183 mm)	8 in. (203 mm)	8 in. (203 mm)
Internal*	RRL/OCI or TOR	16 in. (406 mm)	7.188 in. (183 mm)	10 in. (254 mm)	10 in. (254 mm)
Internal*	Fusible Link	16 in. (406 mm)	7.188 in. (183 mm)	12 in. (305 mm)	6 in. (152 mm)
* Internal mount - smoke detector is ship loose for mounting in the field					

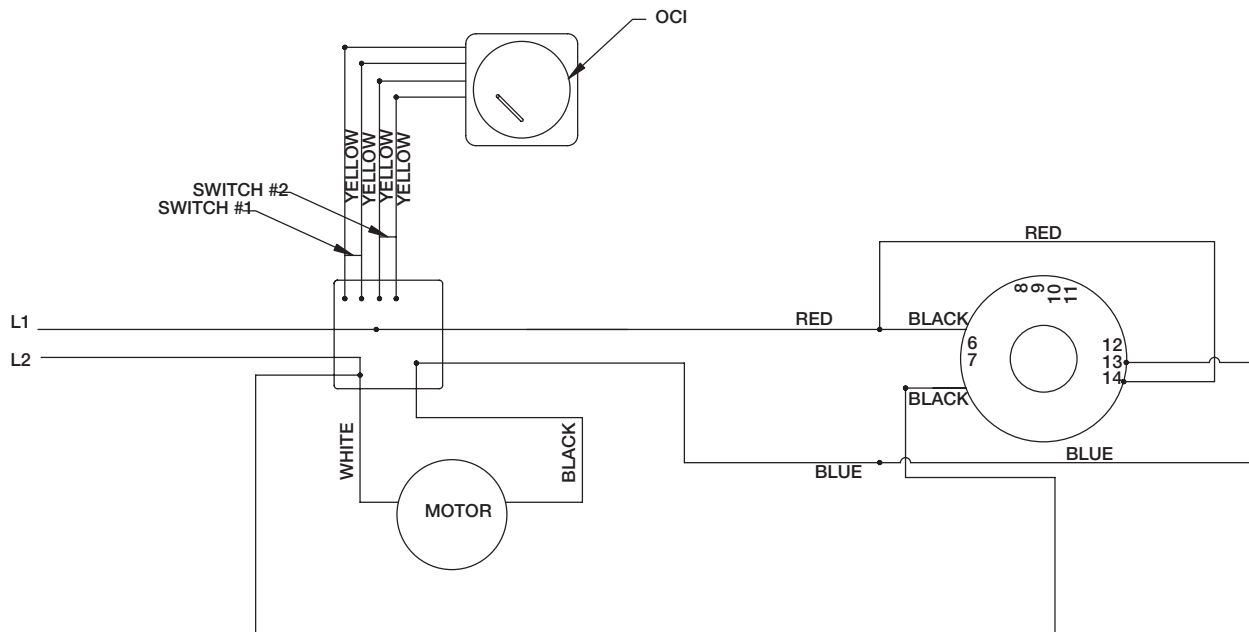
Wiring Diagrams

RRL

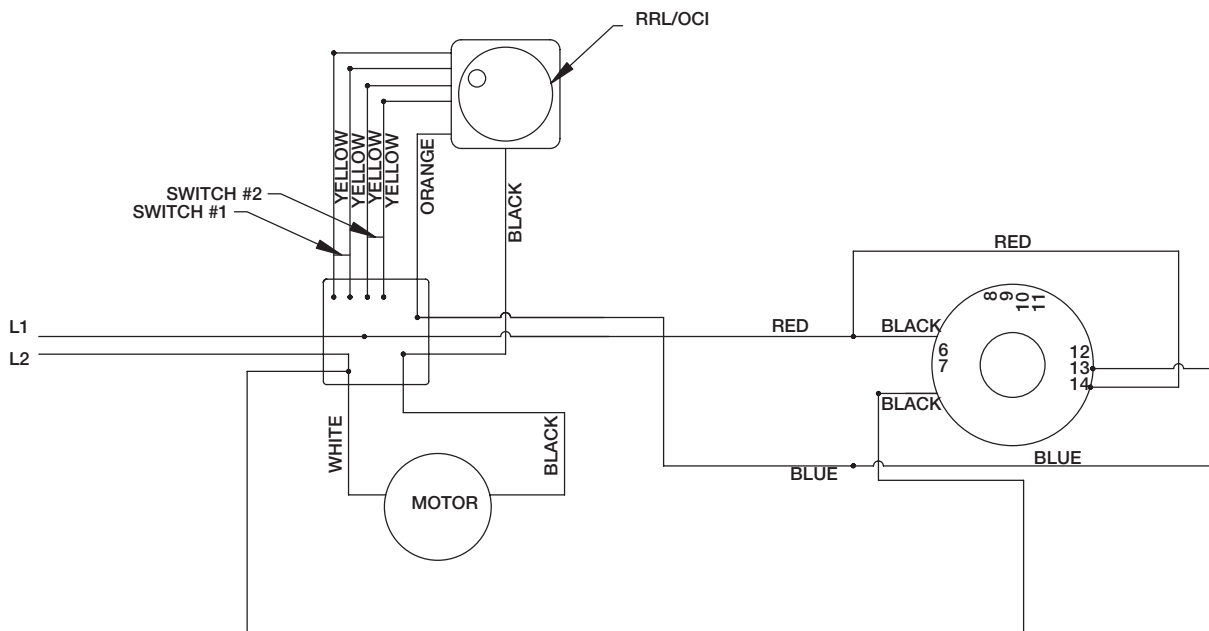


Wiring Diagrams

OCI



RRL/OCI



TOR

