

## Application

The SSNM-30 series is a vertical mounted backdraft damper that is designed to allow horizontal airflow and prevent reverse airflow. The damper is opened by air pressure differential and closed by gravity.

## Ratings

### Pressure

Up to 2 in. wg (0.5 kPa) differential pressure.

### Velocity

Up to 2,500 fpm (13 m/s)

### Temperature

180°F (82°C)

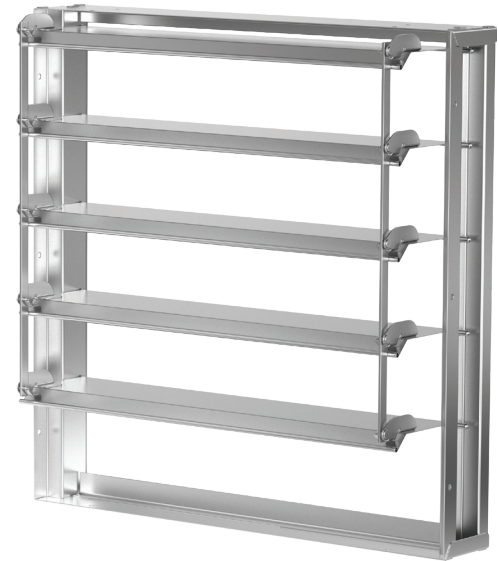
## Construction

	Standard
<b>Frame Material</b>	304SS
<b>Frame Thickness</b>	18 ga. (1.3mm)
<b>Blade Material</b>	304SS
<b>Blade Thickness</b>	26 ga. (0.47mm)
<b>Axle</b>	3/16 in. (5mm) metallic
<b>Axle Linkage</b>	1/8 x 1/2 in. (3mm x 13mm) 304SS
<b>Bearings</b>	Synthetic (acetal) sleeve type
<b>Blade Seals</b>	TPE

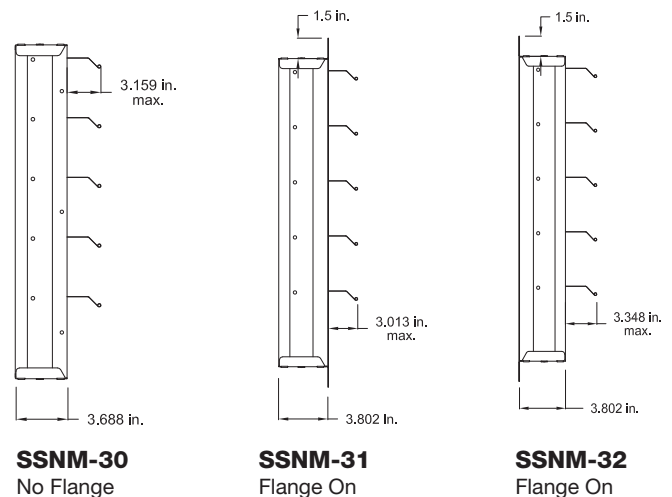
W x H	Minimum Size	Maximum Single Section Size
<b>Inches</b>	6 x 6	24 x 24
<b>mm</b>	152 x 152	610 x 610

## Options and Accessories

- 1½ in. (38mm) flange on discharge: SSNM-31
- 1½ in. (38mm) flange on intake: SSNM-32
- Clean Wrap



\*W & H dimensions furnished approximately 1/8 in. (3mm) under size.



Counterbalance weights may require field adjustment. Instructions are available at [www.greenheck.com](http://www.greenheck.com).

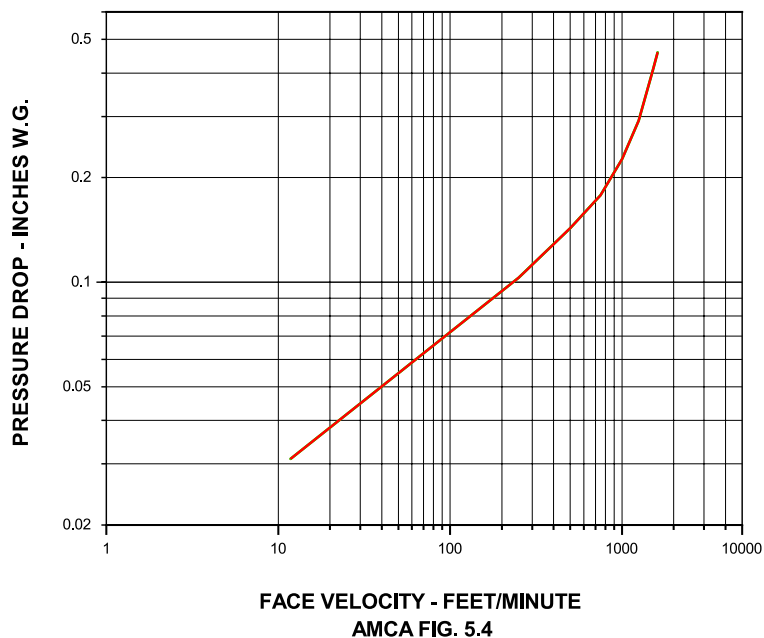
### Air Performance

Performance data results from testing a 24 in. x 24 in. damper in accordance with AMCA Standard 500-D using Figure 5.4. All data has been corrected to represent standard air at 0.075 lb/ft<sup>3</sup> (1.201 kg/m<sup>3</sup>).

### Pressure Drop

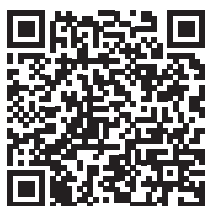
24 in. x 24 in. Damper  
(610mm x 610mm)

VELOCITY VS. PRESSURE DROP



## Document Links

[Installation Instructions](#)



[Backdraft Catalog](#)



[Damper Product Selection Guide](#)



[Specifications](#)



[Damper Warranty](#)

