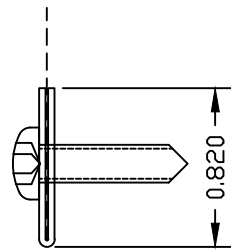
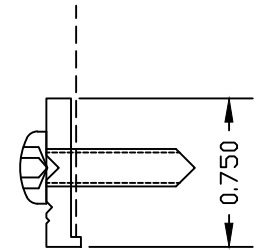


**DETAIL "B"**  
**SCREEN FRAME**



0.031" [0.813mm]  
22GA 5052-H32  
ALUMINUM COIL

**OPTIONAL SHAPES**  
**SCREEN FRAME**



0.125" [3.175mm]  
6063-T5 EXTRUDED  
ALUMINUM

**ATTACHMENT**

ALUMINUM SCREEN FRAMES ARE SECURED W/ 300 SERIES STAINLESS STEEL SHEET METAL SCREWS; AND, GALVANIZED STEEL SCREEN FRAMES ARE SECURED WITH PLATED STEEL SHEET METAL SCREWS. ALL FASTENERS ARE SPACED APPROXIMATELY 16" ON CENTER.

**FINISH**

BIRD SCREEN: UNLESS OTHERWISE SPECIFIED, ALL BIRD SCREEN AND FRAMES ARE FURNISHED IN NATURAL MILL FINISH. BIRD MESHES AND FRAMES CAN BE SUPPLIED IN ANY GREENHECK STANDARD FINISHES AND COLORS.

**SCREEN MESH**

MAT'L	BIRD SCREEN TYPE			DIAMETER/THICKNESS			FREE AREA %
	ENGLISH	METRIC (mm)		ENG.	METRIC (mm)		
ALUM.	3/4"x0.050"	19.05 x 1.27	FLATTENED EXPANDED	.050"	1.270	THICK.	61
ALUM.	3/4"x0.125"	19.05 x 3.175	FLATTENED EXPANDED	0.125"	3.175	THICK.	62
ALUM.	1/4"x0.047"	6.350x1.194	SQUARE MESH WIRE	.047"	1.219	DIAM.	71
ALUM.	1/2"x0.063"	12.70x1.600	SQUARE MESH WIRE	.063"	1.600	DIAM.	80
ALUM.	1"x0.120"	25.4 x 3.048	SQUARE MESH WIRE	.120"	3.048	THICK.	80
GALV.	1/2"x0.041"	12.70x1.041	SQUARE WIRE CLOTH	.041"	1.041	DIAM.	71
STN STL	1/2"x0.047"	12.70x1.194	SQUARE WIRE CLOTH	.047"	1.194	DIAM.	70
STN STL	1"x0.063"	25.4x1.600	SQUARE WIRE CLOTH	.063"	1.600	DIAM.	87.8

\* \*DUE TO CONTINUING RESEARCH, GREENHECK RESERVES THE RIGHT TO CHANGE SPECIFICATIONS WITHOUT NOTICE.\* \*



DRAWN BY: NAH

SCALE: NONE

DATE: 10/4/2013

**FOLDED  
SCREEN FRAME**

REV. NO: 4

FORM NO: 623067