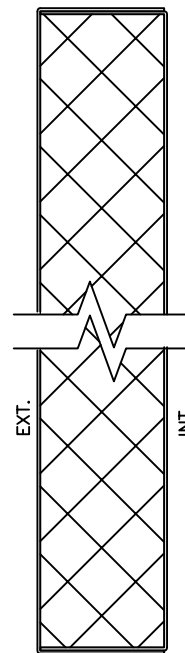


Mineral Wool Insulation (default)



Extruded Polystyrene Insulation (optional)

**Blank Off Panel Thickness and Finish:**

- Non-Insulating blank off panels with a 0.050" or 0.063" aluminum skin
  - Black Kynar ext./mill int. with 0.050" skin - Finished to match ext./mill int. with 0.063" skin
- 1" Insulating blank off panels with 0.032" or 0.063" aluminum skins
  - Black kynar ext./mill int. with 0.032" skins - Finished to match ext./mill int. with 0.063" skins
- 2" Insulating blank off panels with 0.032" or 0.063" aluminum skins
  - Black Kynar ext./mill int. with 0.032" skins - Finished to match ext./mill int. with 0.063" skins

**Attachment Type:**

- Mechanically fastened blank off panels: (default)
  - Blank off panels are not sealed, but fastened to the interior face of the louver(s)
- Sealed and mechanically fastened blank off panels: (optional)
  - Blank off panels are silicone wet sealed and fastened to the interior face of the louver(s)

**Blank Off Panel Construction:**

- Blank off panel construction is single sheet. Gasket materials, edge treatments, and sealed edges are excluded.
- Insulating blank off panel construction is pan-in-pan. Gasket materials, edge treatments, and sealed edges are excluded.

**Blank Off Panel Insulation:**

- Mineral Wool: (default)
  - Semi-rigid, non-combustible, mineral wool thermal insulation board; will comply with ASTM C612, Min. R-value of 4.2 per 1 in. of thickness @ 75 degree F mean temperature, Min. Density of 4.4 lbs./cu.ft.
  - MEA Approval - New York City (331-97-M) and Los Angeles (RR 25444) approved for compliance and performance.
- Extruded Polystyrene: (optional)
  - Rigid cellular thermal insulation will comply with ASTM C578, Min. R-value of 5.0 per 1 in. of thickness @ 75 degree F mean temperature, Min. Density of 1.5 lbs./cu.ft.

**DUE TO CONTINUING RESEARCH, GREEHECK RESERVES THE RIGHT TO CHANGE SPECIFICATIONS WITHOUT NOTICE**



DRAWN BY:	
SCALE:	NONE
DATE:	6/2013

STANDARD INSULATED BLANK-OFF PANELS	
REV. NO: 0	