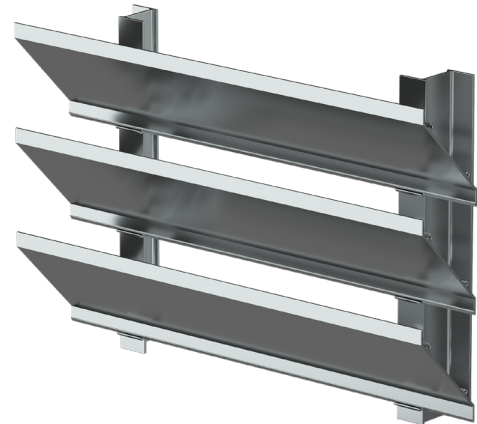


Standard Construction

Material	Extruded 6063-T5 aluminum
Stationary Blade	0.081 in. (2.06 mm)
Vertical Support	Extruded aluminum Z support
Equipment Screen Depth	4 in. (101.6 mm)
Free area - 4 ft. x 4 ft.	8.23 sq. ft. (0.76 sq m)
Percent Free Area	51.4%

Model EES-401 is an extruded aluminum equipment screen with inverted horizontal J-blade louvered equipment screen. Design characteristics lend itself for multiple configuration options. These options include multi-sided configurations that may be provided with mitered or formed box style corners as required.



Standard Details

[EES-401 Standard Details](#)

Document Links

[Louver Finishes & Colors](#)

[Louver Product Selection Guide](#)

[Louver Products Catalog](#)

[Louver Warranty Statement](#)