

EHV-550D

Hurricane Louver

Ideal for the Hurricane Prone Region

- AMCA 550 Listed for High Velocity Wind-Driven Rain
- AMCA 540 Listed for Wind-Borne Debris Impact
- Florida Product Approved
- Miami-Dade, FL NOA 19-0430.03 (Max Wind-Load: 100 PSF)
- AMCA Seal for Water Penetration, Air Performance and Wind Driven Rain



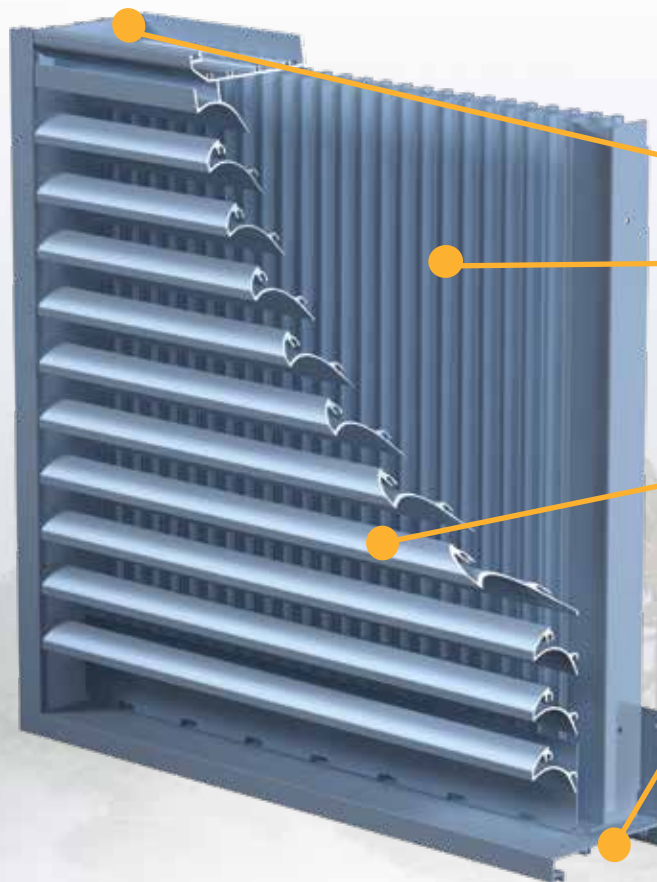
HIGH VELOCITY
RAIN RESISTANT
AND IMPACT RESISTANT
LOUVER
Enhanced Protection
See www.AMCA.org for all certified or listed products

This label does not signify
AMCA airflow performance
certification.



Options available:

- Variety of Bird and Insect Screens
- Blank-off Panels
- Extended Sill
- Filter Rack
- Flange Frame
- Security Bars
- Variety of Architectural Finishes



Single Piece Jamb

Vertical Rear Blades

The vertical rear blades yield high ventilation rates while providing unsurpassed weather protection.

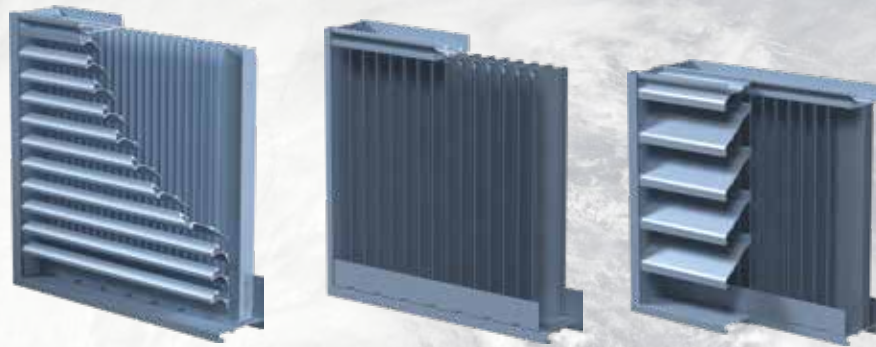
Horizontal Front Blades

Innovative horizontal front blades designed specifically for this model to provide a more traditional appearance and prohibits sight of rear blades from any upward viewing angle.

5.5 inch Depth

Narrower depth than traditional dual module designs to allow installation in a wider range of applications.

EHV-550D Hurricane Louver



	EHV-550D	EVH-501D	EHV-901D
Depth	5.5 inches	5 inches	9 inches
Free Area % (4 ft. x 4 ft.)	50%	55%	54%
Intake Pressure Drop at 6,000 cfm (4 ft. x 4 ft.)	0.21" wg	0.08" wg	0.16" wg
Maximum Wind Load	100 PSF	130 PSF	130 PSF
Maximum Opening Height	96 inches	120 inches	120 inches
Relative Cost	\$ \$	\$	\$ \$ \$
AMCA 550	✓	✓	✓
AMCA 540	✓	✓	✓
Miami-Dade Qualified	✓	✓	✓

Hurricane Louvers Comparison

Explore Greenheck's complete hurricane louver product offering:

- EHV-550D
- EVH-501D
- EVH-660D
- EVH-302D
- EHV-901D
- EHH-601D
- EHV-550
- EHV-901
- EACA-601D

