

# Installation Solutions for Life Safety Dampers



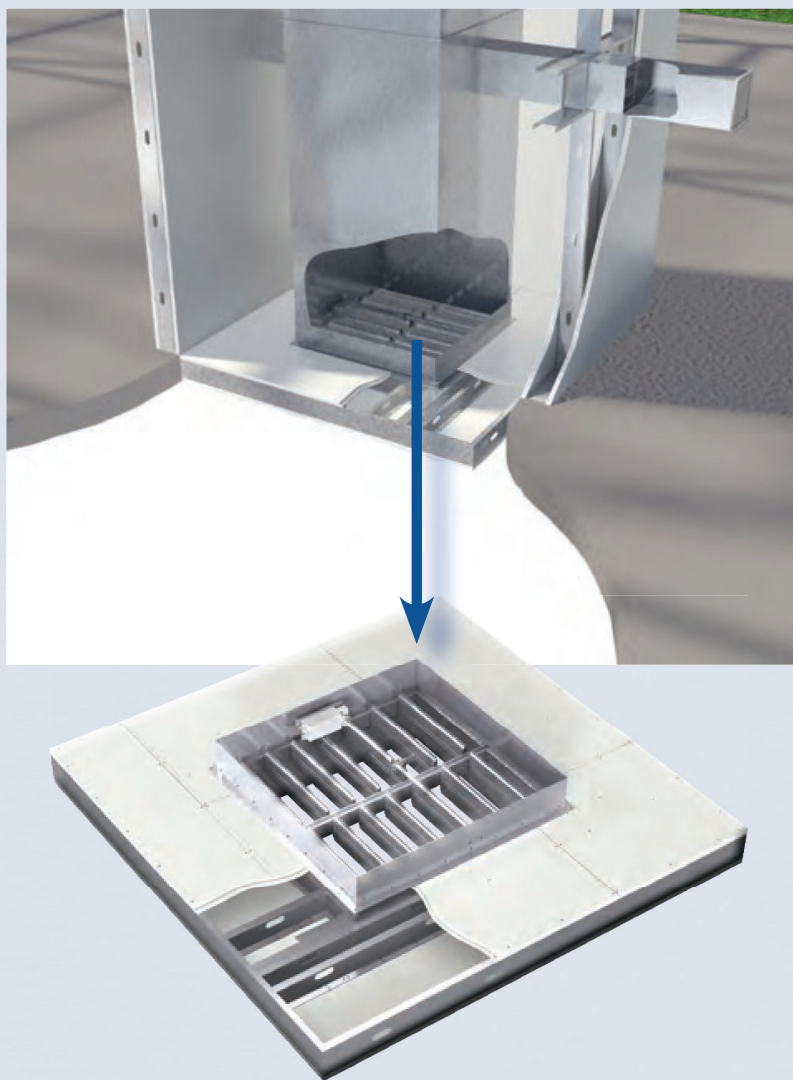
**GREENHECK**

*Building Value in Air.*

# UL Design I503: Horizontal Mount in Non-Concrete Barrier

*An innovative solution to a common challenge!*

UL Design I503 is the only horizontal fire rated assembly made from steel studs and sheetrock that is UL approved to have a fire or fire smoke damper installed in it. UL I503's unique design utilizes heavy gauge studs and special damper framing requirements. This installation is most commonly used to enclose the top or bottom of a shaft when the duct leaving the shaft is smaller than the opening in the rated floor.



Scan the QR  
code to open  
the installation  
supplement



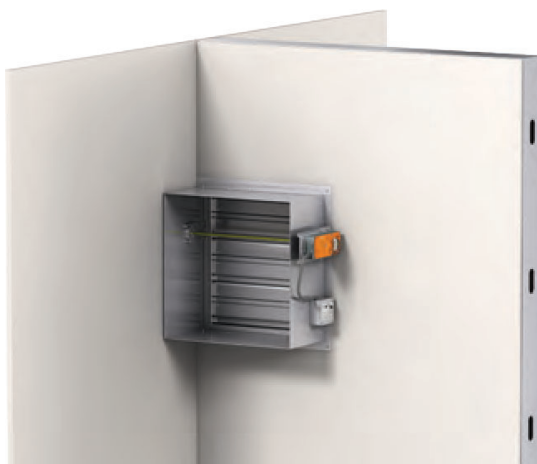
Scan the QR code  
to watch I503  
Horizontal Non-  
Concrete video

# 3-Sided Retaining Angle Installation

*No room for a retaining angle on all four sides?  
No problem!*



Perfect for installations where the damper sleeve is tight up against a wall, floor, or other obstruction. This UL approved installation method allows retaining angles to be installed on only three sides of the damper. The fourth side can be attached directly to the opening without the need for an angle or any firestop material.



Damper is tight  
against the wall



Scan the QR  
code to open  
the installation  
supplement

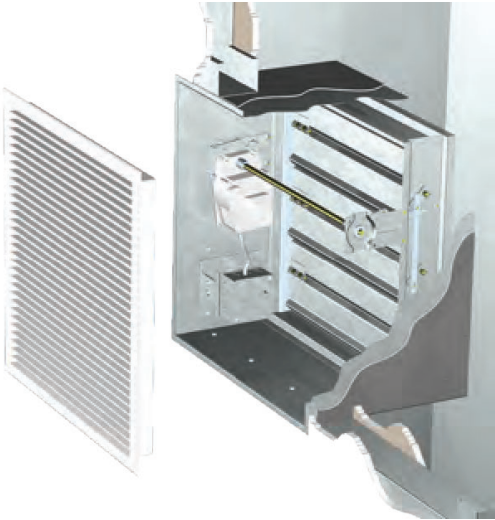


Scan the QR code  
to watch 3-Sided  
Retaining Angle  
video

# Out of Wall Combination Fire Smoke Dampers

*Out of wall damper installations?  
You’ve got options!*

Greenheck damper models (OFD, ODFD, GFSD, and OFSD) have been tested and approved by UL for installations out of the plane of the wall. These damper models are designed to allow “through the grille” access to actuators and controls and are most commonly used in shaft wall applications.

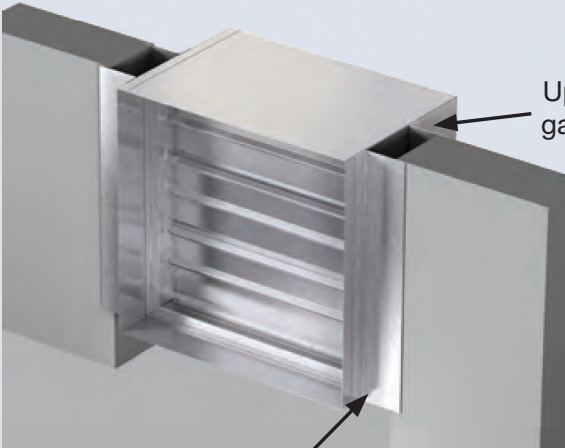


Scan the QR code to open the instruction manual

## Oversized Openings

*Cover up oversized openings  
with retaining angles!*

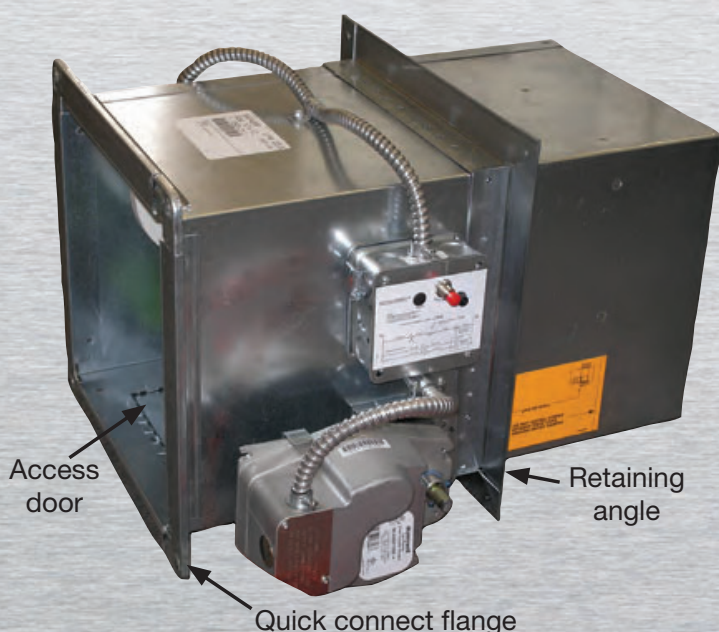
If the opening in the fire rated wall or floor is up to 6 inches larger than the damper, Greenheck’s UL approved installation instructions allow the gap to be covered by retaining angles with no need to apply any additional material to take up that space.



Scan the QR code to open the instruction manual



# Installation Time Savers: Factory Mounted Accessories



## Quick Connect Breakaway Connections

Dampers can be ordered with breakaway connections three different ways:

- Universal flange on one end of the sleeve
- Universal flange on both ends of the sleeve
- One end attached and one shipped loose

## Retaining Angles

Factory installed retaining angles can be ordered in the location needed or wrapped around the sleeve and wire tied. Four different options are available:

- Single side fastened
- Single side wrapped
- Both sides wrapped
- Fastened & wrapped (one angle fastened, one angle wrapped)

## Access Doors

Greenheck can install the access door in the damper sleeve to save on labor cost in the field.

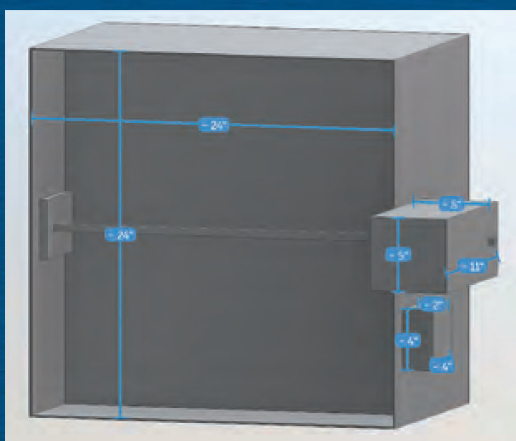
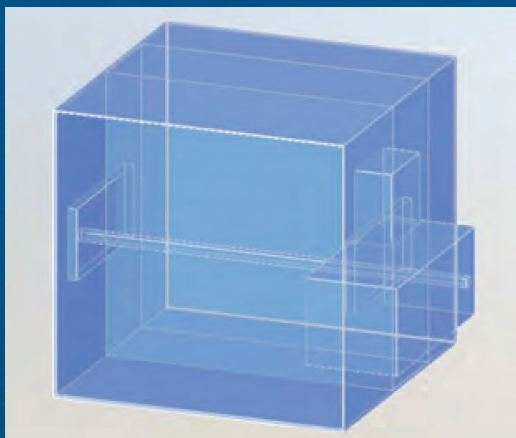


Scan the QR code  
to watch Installation  
Time Savings video

# Damper Revit® Models

***Instantly available and fully configured!***

Greenheck offers readily available Revit® models for all types of life safety damper configurations. Models contain accurate dimensional information of external components, including actuators and junction boxes, to help lay out buildings and avoid collisions when designing an HVAC system.



“Have an idea for an installation solution?”  
Let us know! Contact us at 1-800-717-6540 or  
[dampers@greenheck.com](mailto:dampers@greenheck.com)

## Greenheck

P.O. Box 410 • Schofield, WI 54476-0410  
Phone: 800-717-6540 • Fax: 715.692-6757  
[dampers@greenheck.com](mailto:dampers@greenheck.com)  
00.DMP.NB007 R1 9-2019 RG