

Fire Ready Residential Range Hood Model GRRS



BUILDING VALUE IN AIR.



March
2020

Safety in Seconds

Fire safety in kitchens is a necessity. Relying on portable fire extinguishers should never be the first step in your fire safety protocol when cooking. The best way to ensure fire safety in the kitchen is through deliberate preparation and precision-engineered products. The Greenheck Fire Ready Residential Range Hood is a dual purpose integrated system that provides ventilation and features a self-contained fire suppression system. It is designed to detect fires early and extinguish them should they occur, and is specifically designed for use above residential style appliances in commercial settings, such as:

- Schools
- Cooking classrooms
- Places of worship
- Independent senior living units
- Military housing
- College dormitories
- Fire stations

The Greenheck Advantage

- ✓ Integrated fire suppression system provides the required protection in a smaller footprint compared to Type 1 hoods.
- ✓ Intuitive touchscreen user interface.
- ✓ All parts included for faster installation.
- ✓ Less total cost compared to a Type 1 hood.
- ✓ No welded grease duct required.
- ✓ Energy efficient with LED lights and electronically commutated (EC) fan motors.

How it Works

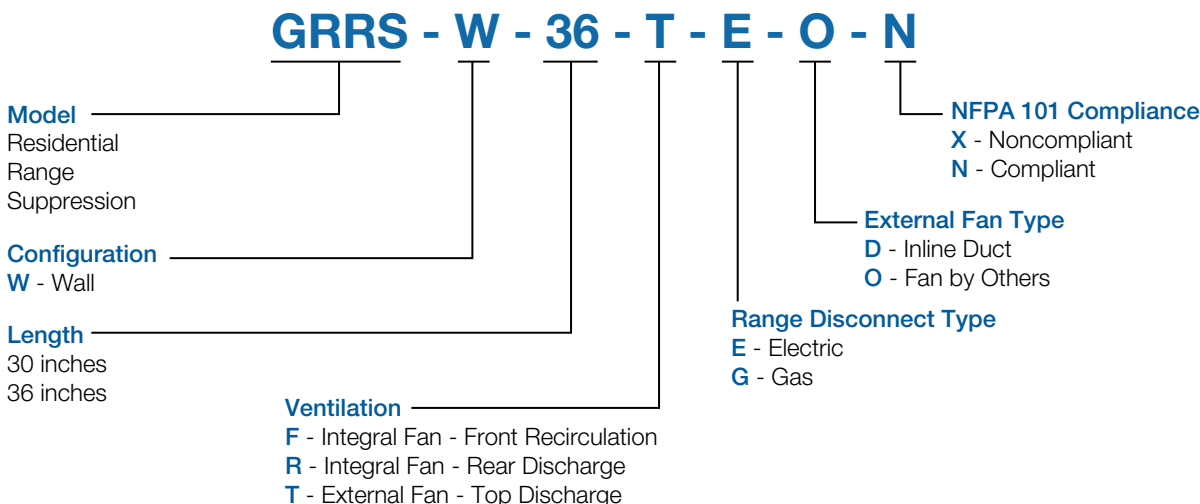
The Fire Ready Range Hood continuously monitors temperature. If heat from the range increases the temperature in the hood beyond its first threshold, the system will increase fan speed to full.

If the temperature continues to rise and exceeds the next threshold, the hood will shut down the appliance using the supplied disconnect (gas or electric).

Should the hood temperature continue to rise, electronic temperature detection will force the unit into a fire-response protocol. This releases a liquid chemical suppression agent through multiple nozzles, putting out the fire. It also triggers the building's fire alarm system to notify those in the building to evacuate.

Model Number Code

The model number code system is designed to completely identify the hood.

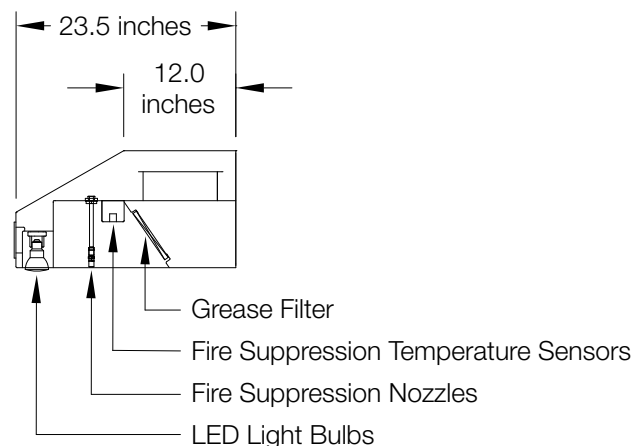
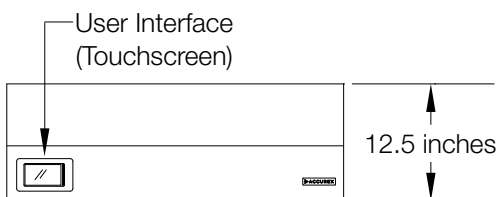
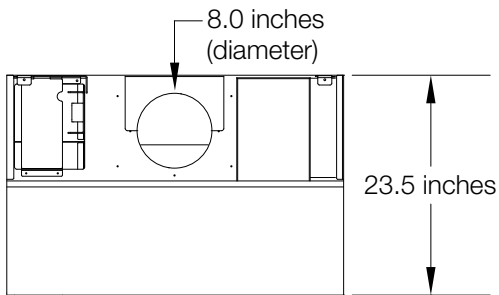


- 1 Touchscreen user interface (can be remote or mounted)
- 2 Recessed LED lights
- 3 Range electric shut off/gas shut off
- 4 Manual pull station
- 5 Integrated fire suppression system
- 6 Exhaust fan (available in multiple configurations)
- 7 Integrated system controls
- 8 Fire piping, grease filter (inside)



UL Listed to
UL Subject 300A

Hood Model	NFPA 101 Compliance	Fan Type	Exhaust CFM
GRRS-W-30-_-_-X	Noncompliant	Integral, Inline or By Others	250
GRRS-W-36-_-_-X	Noncompliant		300
GRRS-W-30-_-_-N	Compliant		500
GRRS-W-36-_-_-N	Compliant		500



Dimensional data shown is for standard top discharge hood.

Features and Benefits

The Fire Ready Range Hood has been engineered with features designed to make the experience for both installers and users **intuitive**, **effortless**, and **practical**.

Hood or Remote Mounted Touchscreen

Full color touchscreen with simple interface for fan and light control as well as NFPA 101 lockout and timers when required.

Flexible Fan Offering with EC Motors

Provides flexibility for rooftop, sidewall or other fan installations specific to your application. Quiet, energy-efficient fans with adjustable airflows for optimum ventilation.

Electronic Fire Detection and Actuation

Reliable actuation with simple reset functionality versus fusible links that need replacement.

Range Disconnect (For Electric / Gas Ranges)

Used to turn the range on and off. A 208-250 VAC 50 Amp electric disconnect for electric ranges or a gas shutoff valve with a 115V outlet for the range clock on gas ranges.

UL 300A Wet Chemical Fire Suppression System

Specifically designed and listed for residential ranges. Quickly suppresses flames if fire occurs. Easily cleans up with soap and water.

Plug-and-Play

Plug-and-play cables provided for all field-mounted electrical components eliminating time consuming field wiring.

Audible Safety Alarm

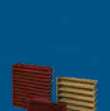
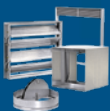
Alerts occupants of fire danger.

Fully Monitored Control Package

Detects cooking to automatically turn fans on and shuts off the range if temperature gets too high.

Mesh Grease Filter

Captures airborne grease from cooking and is easily removable for cleaning.



Our Commitment

As a result of our commitment to continuous improvement, Greenheck reserves the right to change specifications without notice.

Specific Greenheck product warranties are located on greenheck.com within the product area tabs and in the Library under Warranties.

