



**Innovative Products. Proven Performance.**

GREENHECK INDIA | MARCH 2025

 **GREENHECK**  
*Building Value in Air.*

# Fans



**Model RV-D**

Model RV-D is a centrifugal roof exhaust fan designed for clean air or emergency smoke applications.

## Features

- Max Volume 13,759 cfm
- Static Pressure up to 1,100 Pa
- AMCA Licensed for Sound and Air Performance
- Direct drive

## Benefits

- Easy rooftop installation
- Emergency smoke options available



**Model DS-M**

Model DS-M is a three-blade and six-blade, direct drive HVLS fan designed for commercial or industrial spaces with medium to high ceilings. This economical fan is the ideal balance between cost and performance, making it a smart choice for budget-conscious building owners.

## Features

- Max Volume 243,000 cfm
- Plug-and-play design
- Direct drive
- AMCA Licensed for Circulating Fan Performance

## Benefits

- Industry's easiest installation
- Lower maintenance costs



**Model FJ-M**



Model FJ-M is a pre-engineered, factory-supplied combination of a centrifugal blower with a discharge stack. This model is designed to safely exhaust contaminants above the roof deck, preventing exposure or re-entrainment of contaminants back into the building.

## Features

- Max Volume 16,990 cfm
- Static Pressure up to 1,443 Pa
- Galvanized steel with Permalock™ housing
- AMCA Licensed for Sound, Air and FEI Performance
- Nozzle options available

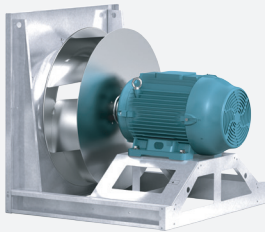
## Benefits

- Value based construction
- High operating efficiencies
- Installation savings
- Compliance with ANSI Z9.2 Standard





# Fans



**Model APM-M**

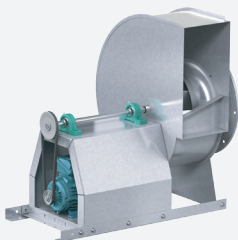
Model APM-M is a commercial grade plenum fan combining performance and reliability into a lighter duty, economical design. The compact direct drive eliminates the cost, maintenance and complexity of traditional belt drive plenum fans. APM-Ms are an excellent option as a stand-alone single fan or parallel fan array in custom or field-built air handling applications.

## Features

- Max Volume 50,000 cfm
- Static Pressure up to 2,500 Pa
- High-efficiency airfoil wheel
- AMCA Licensed for Sound and Air Performance

## Benefits

- Suitable for single or multiple fan array installations
- Lightweight and compact footprint
- Reduced sound levels



**Model CSB**

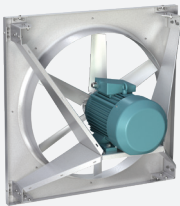
Model CSB is a single inlet single-width centrifugal blower that offers backward-inclined (BI) wheels. CSB fans are an excellent choice for kitchen exhaust, general exhaust or supply applications, flammable fumes, emergency smoke exhaust, and high-temperature process exhaust.

## Features

- Max Volume 31,000 cfm
- Static Pressure up to 1,400 Pa
- Galvanized steel with Permalock™ housing
- AMCA Licensed for Sound, Air and FEI Performance

## Benefits

- Flexible for a variety of applications
- Suitable for indoor or outdoor installation
- Belt drive design allows for easy field performance adjustments



**Model AER-M**

Model AER-M is a wall axial fan designed to provide efficient and reliable operation for commercial and industrial process applications.

## Features

- Max Volume 29,070 cfm
- Static Pressure up to 610 Pa
- Corrosion-resistant galvanized construction
- Direct drive
- AMCA Licensed for Sound and Air Performance

## Benefits

- Industry's easiest installation
- Lower maintenance costs
- Optional accessories like weatherhood and propeller guard



**Model QEI-M**

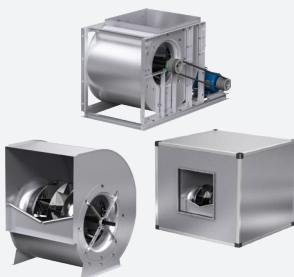
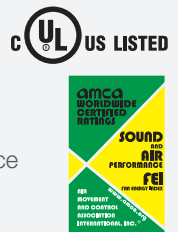
Model QEI-M is a mixed flow inline fan that can be used for a wide variety of commercial, institutional, and industrial applications, handling everything from clean, grease-laden or high-temperature air for supply, exhaust, or return air applications.

## Features

- Max Volume 32,900 cfm
- Static Pressure up to 1,244 Pa
- Chemical-resistant coated steel
- Belt drive
- AMCA Licensed for Sound, Air and FEI Performance

## Benefits

- On-site installation flexibility for motor orientations
- High efficiency and low maintenance



**Model CDB**

Model CDB, Greenheck's backward-inclined, double-width centrifugal fan, is designed for clean air supply, exhaust systems, or as part of custom air handling equipment.

## Features

- Max Volume 88,235 cfm
- Static Pressure up to 1,600 Pa
- Galvanized steel with Permalock™ housing
- AMCA Licensed for Sound, Air and FEI Performance

## Benefits

- Filter packages available
- Acoustic housing packages available
- High operating efficiencies
- Installation savings



# Fans



**Model RA and RA 3**

Greenheck high-performance axial fans, models RA and RA 3, are direct drive axial fans designed for inline air ventilation in commercial, institutional or industrial buildings. The casing design and construction are well-suited to indoor or outdoor applications and can install easily in ducted or non-ducted systems.

## Features

- Max Volume 172,000 cfm
- Static Pressure up to 1,274 Pa
- Up to 86% total efficiency
- EN12101-3 Certified
  - F200 - 250°C / 2 hours
  - F300 - 300°C / 2 hours
  - F400 - 400°C / 2 hours
- UL Listed
  - 250°C / 2 hours Power Ventilators for Smoke Control Systems
- Reversible airflow option available

## Benefits

- Reduced operating and maintenance costs
- Flexible for vertical or horizontal mounting
- Butterfly damper and roof hoods available
- Coating options available



Certification for RA-3 only



Certification for RA & RA-3



**Model GJ-AU**

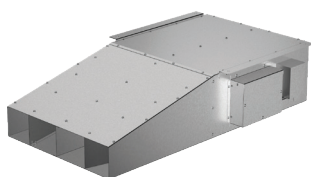
Greenheck's GreenJet® series, model GJ-AU, includes a range of fans to accommodate your needs for parking garage ventilation. Available in unidirectional configuration, the GJ-AU is designed to move high volumes of air at high efficiencies.

## Features

- Thrust up to 75 N
- Up to 5900 cfm
- Aluminum airfoil propeller
- Direction vanes available to direct airflow
- EN12101-3 Certified
  - F300 - 300°C / 2 hours
  - F400 - 400°C / 2 hours

## Benefits

- Reduced operating costs
- Attenuation packages to reduce sound levels
- High velocity jet dilutes and exhausts contaminants



**Model GJ-CU**

Greenheck's GreenJet® series GJ-CU is a low-profile centrifugal jet fan designed for parking garage and air movement applications. With the low profile, it easily fits in tight spaces, moving clean air in hard-to-ventilate as well as open areas.

## Features

- Thrust up to 98 N
- Up to 6400 cfm
- Zinc-plated inlet guard
- EN12101-3 Certified
  - F200 - 250°C / 2 hours
  - F400 - 400°C / 2 hours

## Benefits

- Designed with precision-engineered components to minimize noise
- Optimized for installations in confined or space-constrained areas.



**Model BSQ-M and SQ-M**

Greenheck's model BSQ-M and SQ-M centrifugal inline fans feature a unique combination of installation flexibility, rugged construction, ease of service, high efficiency, and low sound levels. This compact inline fan is the ideal selection for indoor clean air applications (including intake, exhaust, return or make-up air systems) where space is a prime consideration.

## Features

- Max Volume 4150 cfm / Static Pressure up to 410 Pa (SQ-M)
- Max Volume 26,600 cfm / Static Pressure up to 996 Pa (BSQ-M)
- Galvanized steel/Aluminium housing construction
- Backward-inclined centrifugal wheel
- Coating options available
- Duct collars available

## Benefits

- Easy to install
- Filtration packages available
- Reliable performance
- Acoustic housing packages available



# Dampers



**Models SMD and FSD**

Smoke dampers (model SMD) and combination fire/smoke dampers (model FSD) are designed for use in HVAC systems where emergency smoke or fire and smoke control is required.

## Features

- Available with factory-mounted sleeves and actuators
- Vertical and horizontal mounting (Blade always horizontal)
- Galvanized steel construction
- Available in Class I & Class II leakage
- 1½ and 3 hour resistance ratings (FSD)

## Certifications

- UL 555 Listed
- UL 555S Listed
- AMCA Certified for Air Performance



**Models FD and DFD**

Static (model FD) and dynamic (model DFD) fire dampers are designed to protect duct penetrations and transfer openings in fire-rated walls, partitions and floors. Damper closes immediately upon temperature elevation.

## Features

- Available with integral sleeve
- Vertical and horizontal mounting (Blade always horizontal)
- Galvanized steel construction
- 1½ and 3 hour resistance ratings

## Certifications

- UL 555 Listed
- AMCA Certified for Air Performance (DFD-210)



Certification for DFD only



**Models VCD and MBD**

Greenheck's commercial control dampers, models VCD and MBD, are ideal for use in buildings to regulate the flow of air in HVAC systems. These dampers can be used in intake, exhaust, and mixed air applications.

## Features

- Available with factory-mounted sleeves and actuators
- Vertical and horizontal mounting (Blade always horizontal)
- Galvanized steel construction

## Certifications

- AMCA Certified for Air Performance (VCD-20)
- AMCA Certified for Air Leakage and Air Performance (VCD-23 and VCD-33)



Certification for VCD only



**Model HTD**

Greenheck's heavy-duty industrial damper, model HTD-636 is ideal for use in underground road, railway and metro tunnels. These dampers provide highly efficient solutions for tunnel ventilation, ensuring optimal performance in both standard operations and emergency scenarios.

## Features

- Tested in accordance with BS 476 standard
- Leakage as per UL 555S Class 1

# Our Commitment

Greenheck is the global leader in the manufacture of air movement, control, conditioning, and distribution equipment for nonresidential buildings. The products we engineer and manufacture improve the quality and comfort of indoor air for people inside hospitals, schools, office buildings, libraries, restaurants, hotels, shopping malls, industrial plants, warehouses, and any other type of commercial building that requires ventilation. Our employees around the world take pride in being “the easiest company to do business with,” and strive to create new products that save energy, perform better, install easily and require less maintenance.



**5,500+**  
People



**12**  
Manufacturing  
locations

Greenheck India Private Ltd. began operations in December 2013. Our 11,148 square meters (120,000 square feet) facility is located in Bawal, a municipality of the Rewari district in the state of Haryana. It is strategically located along National Highway 8 about 100 km from Delhi. The facility meets the needs of the growing Indian, Asia Pacific and Middle Eastern markets.

## Greenheck India Certification

- Underwriters Laboratory (UL)
  - Approved manufacturing location
  - Multiple UL Listed products
- CE
  - Approved manufacturing location
- ZED
  - Zero Defect and Zero Effect (ZED) Gold certification
- AMCA
  - Member Company
  - Multiple AMCA Certified products
- ISO
  - ISO 9001:2015
  - ISO 14001:2015
  - OHSAS 18001:2007



Greenheck India Pvt. Ltd.

Corp. Office: 201-202, 2nd Floor, Landmark Cyber Park, Sector-67, Gurgaon-122018.

Manufacturing Unit: Plot no. 241, Sector-3, HSIIDC Growth Centre, Bawal-123501. Distt. Rewari 123501. [www.greenheck.in](http://www.greenheck.in)  
Rev 10, March 2025