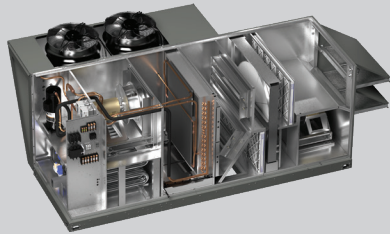
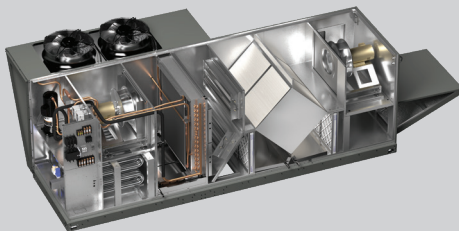


## Total Enthalpy Wheel



Model	RVE	
Material	Polymer	Aluminum
Airflow Range	500-18,000 cfm	1,230-13,320 cfm
Effectiveness	70-80%	
Cross Leakage	3-5%	
Frost Control	Timed Exhaust Modulating Wheel Electric Preheater	
Economizer	Stop/Jog Wheel Modulating Wheel Energy Wheel Bypass	
Maintenance	Removable segments - wash with mild detergent and low pressure tap water	Vacuum off surface, purge with compressed air, or wipe dust/particles from surface

## Total Enthalpy Core



Model	RVC	
Material	Fiber	Polymer
Airflow Range	500-6,500 cfm	500-6,250 cfm
Effectiveness	50-60%	55-65%
Cross Leakage	0-1%	
Frost Control	Timed Exhaust Energy Core Bypass Electric Preheater	
Economizer	Energy Core Bypass	
Maintenance	Vacuum off surfaces	Wash with mild detergent and low pressure tap water

## Optional RV, RVE, and RVC Accessories

Airflow Monitoring
CO <sub>2</sub> Sensor
Coatings for Corrosive Environments
Damper End Switches
Dirty Filter Sensor(s)
Energy Wheel Rotation Sensor
Electric Preheater
GFCI Outlet
Needlepoint Bipolar Ionization (NPBI®)
Roof Curb
Room Thermostat
Smoke Detector
Ultraviolet Germicidal Irradiation (UVGI)

## Common Applications

Animal Shelters	Locker Rooms
Conference Centers	Multifamily Housing
Dormitories	Nursing Homes
Hotels	Schools
Institutions	Veterinary Hospitals

## Product Certifications



ETL Listed for electrical and overall unit safety. Every unit is tested at the factory before it is shipped to the jobsite.



Energy recovery wheels are certified by the AHRI Air-to-Air Energy Recovery Ventilation Equipment Certification Program in accordance with AHRI Standard 1060.

## Greenheck

P.O. Box 410 • Schofield, WI 54476-0410  
Phone: 866-478-2574  
DOAS@greenheck.com  
00.TAP.NB012 R4 8-2024 SN

# Dedicated Outdoor Air Systems



Model RV-10



Model RV-25



Model RV-75





## Models RV, RVE, and RVC

### All Sizes

- 2-inch double-wall cabinet with R13 injected foam insulation
- 500 - 18,000 cfm and up to 3 in. wg ESP
- Ideal for 100% outdoor air, variable air volume, and single zone applications
- Optional recirculation damper for 20-100% outside air and night setback operation
- Optional total enthalpy core and total enthalpy wheel
- Direct drive, VFD driven, backward-inclined fans

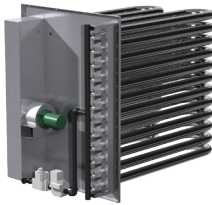
### Cooling

- Packaged direct expansion (3 - 70 tons), air-source heat pump (5 - 30 tons), chilled water
- Inverter scroll on lead compressor
- Modulating hot gas reheat for humidity control
- Low sound condenser fan
- Electronically commutated (EC) motor on lead or all condenser fan(s)



### Heating

- Indirect gas-fired, electric, hot water, or air-source heat pump
- Up to 1,200 mbh heating capacity
- Up to 16:1 high turndown furnace



## Optional Features

### Energy Recovery

- Enthalpy Core
  - Fiber (5 - 30 tons) | Polymer (5 - 30 tons)
- Enthalpy Wheel
  - Polymer (3 - 70 tons) | Aluminum (5 - 70 tons)
- Frost Control options
- Economizer options

### Air-Source Heat Pump

- 5 - 30 tons capacity
- High efficiency with standard inverter compressor
- Lead EC outdoor fan motor (standard feature) for modulating head pressure control
- Coefficients of Performance (COP) ranging from 3-4, contributing to lower annual energy costs

### Horizontal Duct Connections

- Optional side or end return air intake
- Side discharge
- Eliminates the need for a costly, tall plenum curb



## Unit Control Options

### Microprocessor

Models RV, RVE, and RVC include a microprocessor controller that is factory programmed, wired and tested prior to shipment.

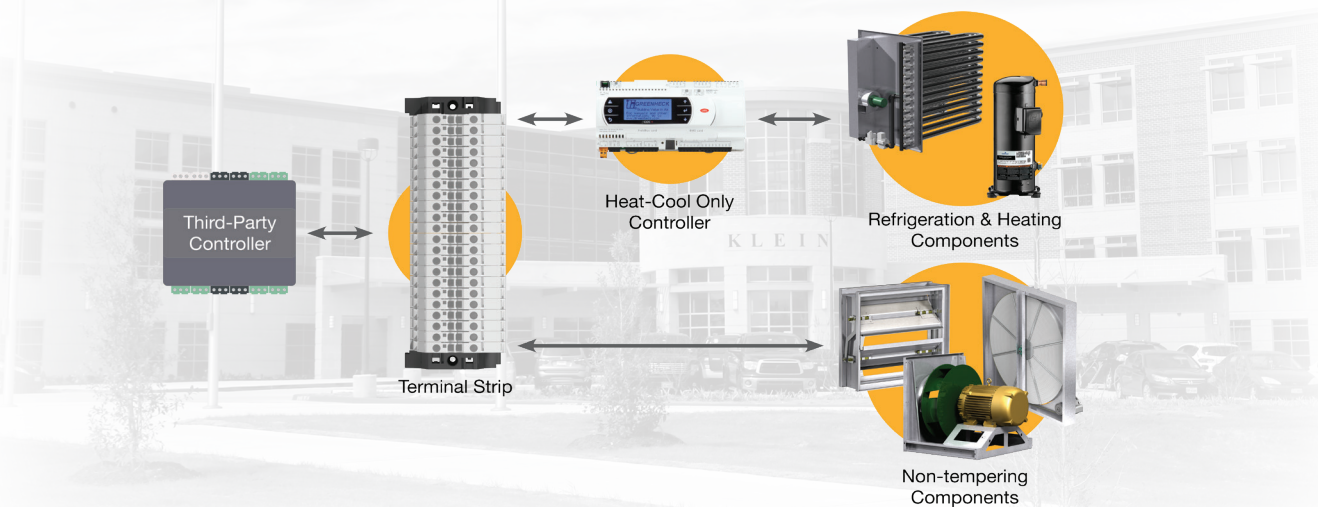
The controller can operate stand-alone or integrate with a building management system (BMS) using BACnet® MS/TP or IP, or Modbus® RTU or IP protocols. This controller operates the unit in a safe and energy-efficient manner while controlling temperature and humidity. Control features include:

- LCD display with built-in keypad for easy set point adjustment
- Integral 7-day time clock
- Night setback option
- Auto changeover based on outdoor air conditions
- Heating and cooling temperature lockouts
- Building freeze protection
- Room temperature and humidity control
- Override controls for ease of start-up



### Heat-Cool Only Controls

The Heat-Cool Only Control offering is designed to allow third-party control of a packaged direct expansion (DX), heat pump, or indirect gas heat on models RV, RVE, and RVC, while maintaining the safeties of the refrigeration system and heating devices.



## Web User Interface (UI)

Greenheck's microprocessor controller comes standard with a web user interface allowing the unit to be viewed and controlled from a web browser. A full graphic, specific to the unit selected, allows for monitoring and control of the unit without a building management system (BMS). Other features include full control display access, customizable data trending, and service contact information.



## DOAS Selection Software

Greenheck's free online eCAPS® Engineering Application Suite can now simplify and optimize your selection of DOAS. Just CLICK on the Outdoor Air product category. ENTER your project requirements. REVIEW your selections for size, weight and electrical load specifications. Then create a SCHEDULE. eCAPS also helps you locate and contact your nearest Greenheck rep. It's easy to use and always up-to-date.

