

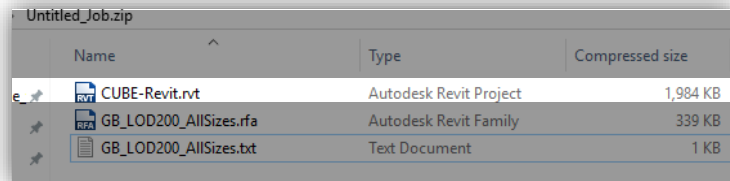
Thank you for downloading our Revit content!

We are in the process of transitioning from providing Revit projects, to providing Revit family files. This pdf is a reference guide to assist you with correctly loading Revit content.

Within the Revit folder you download, you may encounter 3 different scenarios. Here's how to deal with each:

SCENARIO 1 OF 3 -

I received a Revit Project,
what do I do with it?

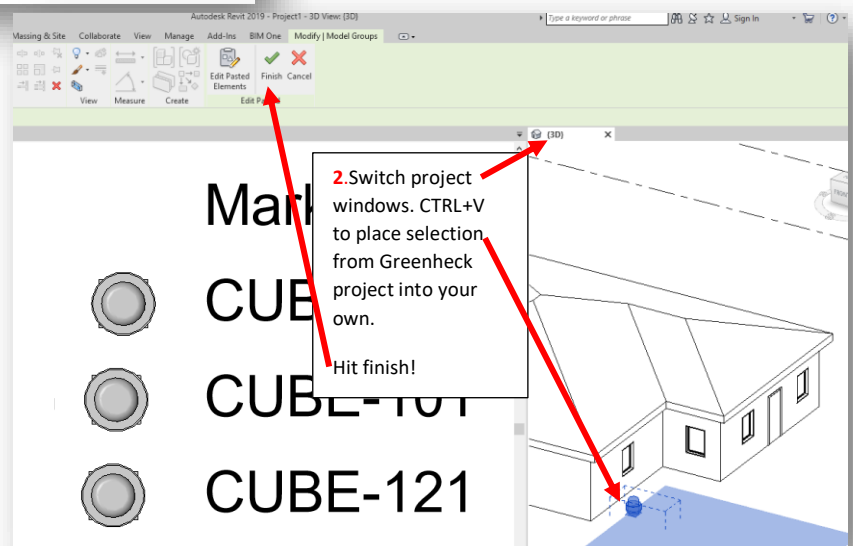
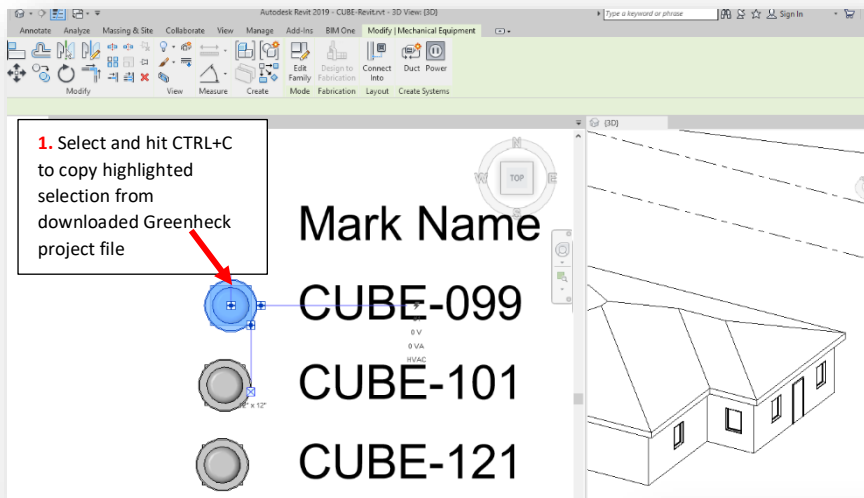


Name	Type	Compressed size
CUBE-Revit.rvt	Autodesk Revit Project	1,984 KB
GB_LOD200_AllSizes.rfa	Autodesk Revit Family	339 KB
GB_LOD200_AllSizes.txt	Text Document	1 KB

Our Revit projects act as container files, and have one of each product size.

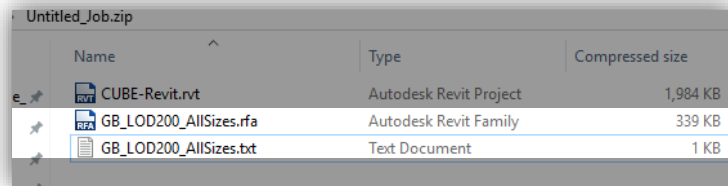
1. Open the project alongside your own, locate and copy (CTRL+C) the desired size.
2. Switch windows within Revit so you are back in your own project environment.
3. Paste (CTRL+V) the copied size and place.

This transfers a single selection from our project file to yours.



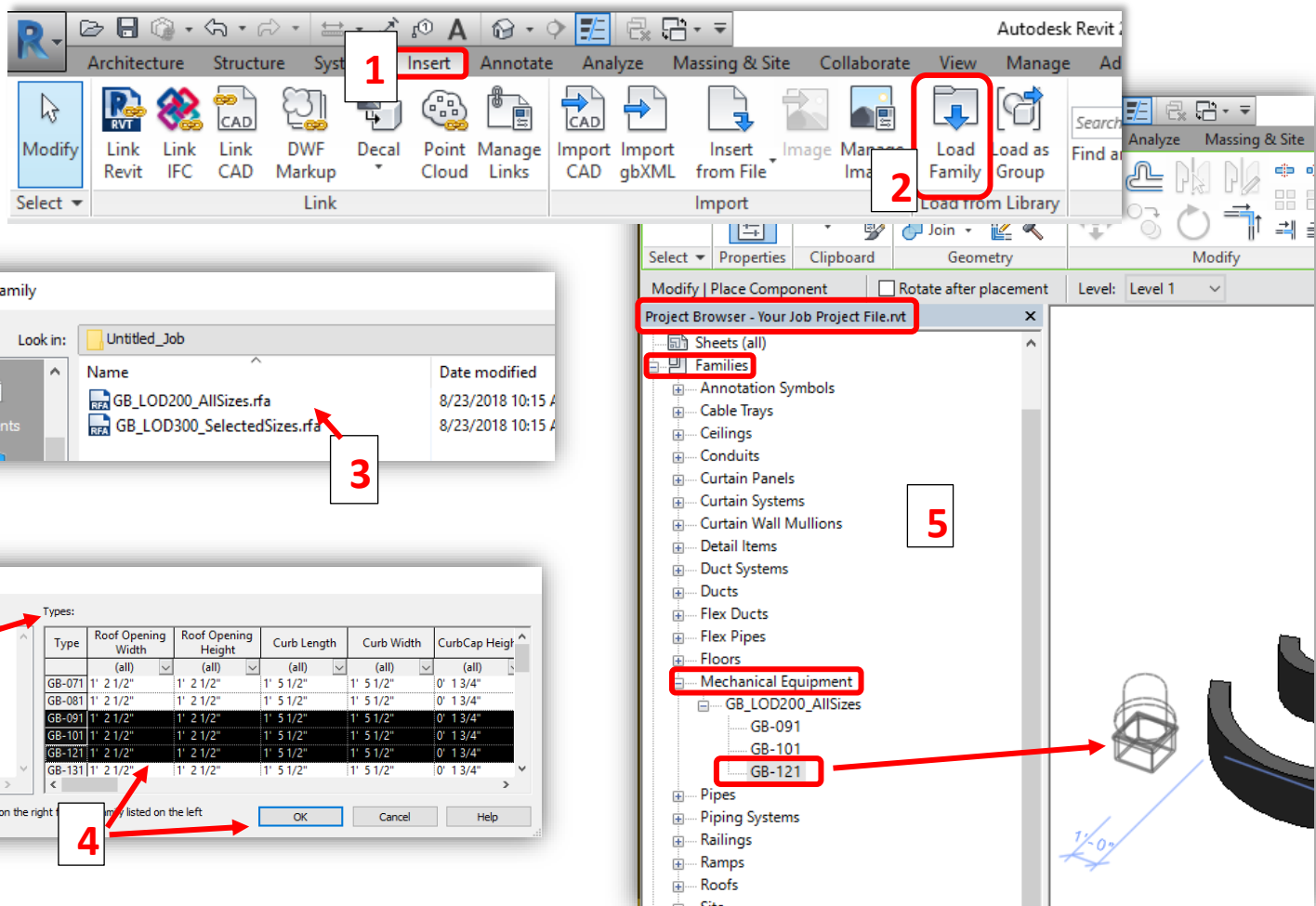
SCENARIO 2 OF 3 -

I received a Revit family and a text file, what do I do with it?



1. Go to the 'Insert' Tab on the ribbon in Revit.
2. Select 'Load Family', and navigate to the location of the Revit Family (and text file).
3. Select the Revit Family file(s) you wish to insert into your project.
4. The 'Specify Types' dialog box should now appear, showing you the various sizes available (these are being read from the text file!). Make your selection(s), ensuring that the desired line item turns black (it won't load correctly otherwise!)
5. Now, you should be able to locate your loaded selection in: 'Project Browser' -> 'Families' -> 'Mechanical Equipment'.
Click, drag and drop to place an instance.

Tip: Alternatively, you can type **CM** (this loads the last inserted family to the mouse cursor), or type **ME** (this loads the last inserted mechanical equipment family to the mouse cursor) to swiftly place a family instance in your project.




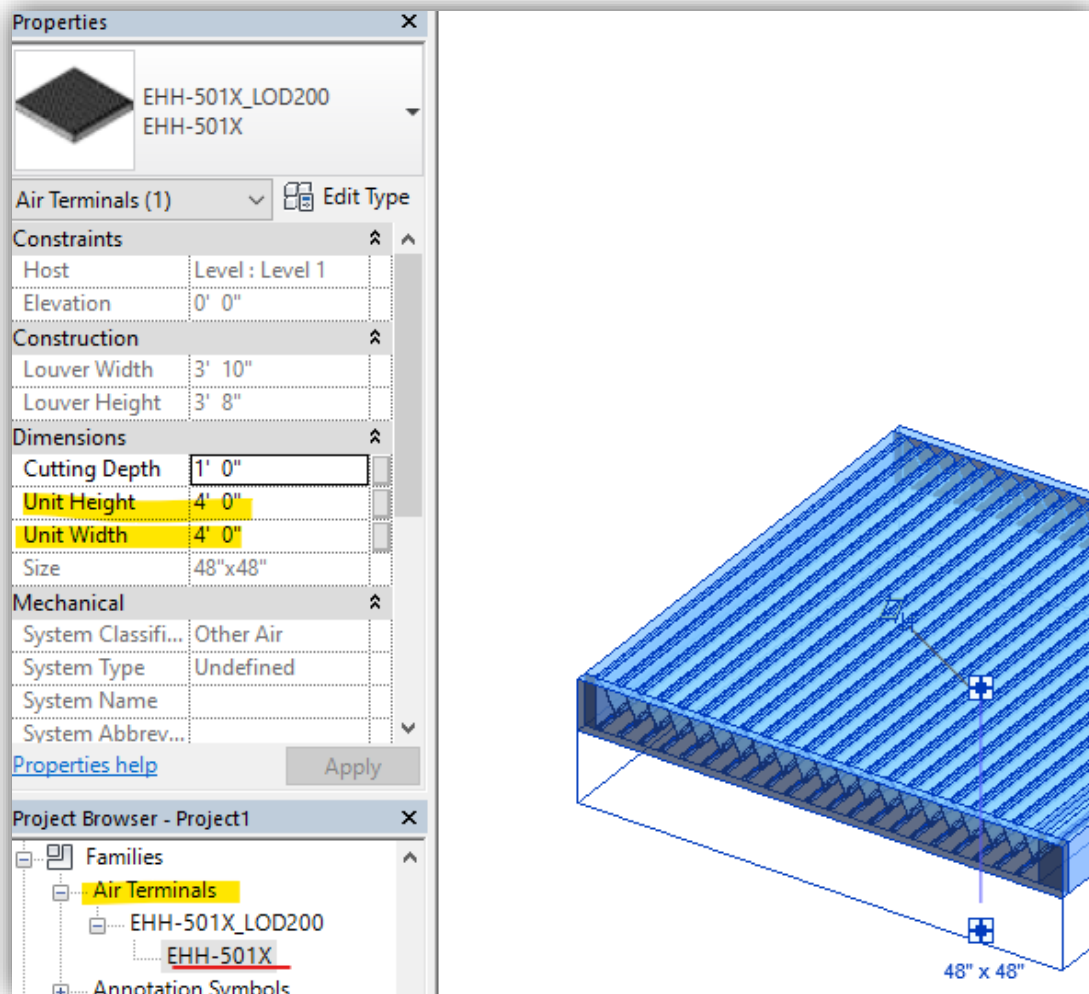
SCENARIO 3 OF 3 -

I received a **single Revit family for a Louver**, what do I do with it?

Our Louver Revit files are face based families that can be dropped into a Revit project and manually adjusted on the fly. This can be done by changing the 'Unit Height' and 'Unit Width' parameters.

 **Tip:** Our Louvers can be found in the 'Air Terminal' families in the Revit Project Browser.

 **Tip:** Type **AT** (this loads the last inserted Air Terminal family to the mouse cursor) to swiftly place a family instance in your project.



APPENDIX



Note: Revit families with text files bearing the same name work in tandem. If you need to move the Revit family from one place to another on your network drive, always make sure to move the .txt file as well. This text file is the type catalog containing details per your selection.



Q: I see 2 versions of my Revit family file, one ending with “_LOD200_Allsizes.rfa” and another ending with “_LOD300_SelectedSizes.rfa”. What’s going on here?

Untitled_Job				
Name	Date modified	Type	Size	
CUBE-Revit.rvt	8/23/2018 10:15 AM	Autodesk Revit Pr...	2,112 KE	
GB_LOD200_AllSizes.rfa	8/23/2018 10:15 AM	Autodesk Revit Fa...	368 KE	
GB_LOD200_AllSizes.txt	8/23/2018 10:15 AM	Text Document	7 KE	
GB_LOD300_SelectedSizes.rfa	8/23/2018 10:15 AM	Autodesk Revit Fa...	368 KE	
GB_LOD300_SelectedSizes.txt	8/23/2018 10:15 AM	Text Document	7 KE	



A: In order to conform to the BIMForum’s interpretation of the American Institute of Architects (AIA) [Level of Development](#) (LOD) standards for Building Information Modeling (BIM) elements, we provide our Revit Content in LOD 200 (Greenheck website and eCAPS), LOD 300 (eCAPS only) and LOD 350 (CAPS only).

The file ending with “_LOD200_Allsizes.rfa”, comes with a type catalog (the text file bearing the same name), which contains various sizes of the product. This is included in your download for added flexibility as initial project designs change. These Revit families do not contain any performance data.

The file ending with “_LOD300_SelectedSizes.rfa”, comes with a type catalog which contains just your specific selection from eCAPS. It does have shared parameters which are populated with all the performance data displayed on the eCAPS schedule for that selection.

