

Mixed Flow Inline Fans

Model SQ

Direct Drive

Model SQ provides a unique combination of installation flexibility, rugged construction, ease-of-service, high-efficiency, and low sound levels. Fans are compact and ideal for supply, exhaust, return or make-up air systems in indoor clean air applications where space and efficiency is important. These fans deliver on competitive advantages in a wide range of applications, including office, apartments/condos, manufacturing, education, and health care facilities.

- Industry leading performance up to 27,490 cfm (45,873 m³/hr) and up to 3 in. wg (747 Pa)
- Mounting options in any configuration – horizontal or vertical will provide straight-thru airflow
- Totally enclosed motors that improve motor access and eliminate the need for a motor cover
- Standard flanged connection to slide the fan in and out of ductwork easily
- Removable side panels* for quick access and inspection

1

Housing Construction

Fan housing is constructed of rigid structural members and formed galvanized steel panels designed to maximize outlet area for efficiency and quieter operation.

2

Wheel

Mixed flow wheel technology delivers industry leading performance, efficiency and sound. Each wheel is statically and dynamically balanced.

3

Motor

Totally enclosed motors allow for easier access by not requiring an additional motor cover. Maximize your efficiency and control ability by using Greenheck's Vari-Green® motors.

4

Isolator Brackets

Short corner brackets are used for standard mount configuration (horizontal airflow with motor above or below the motor plate). For universal mount applications taller corner brackets are provided to allow fan mounting in any position.



**Shown with access panels removed*

Performance

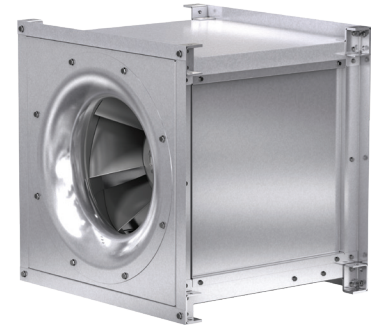
Model	Max. Motor HP	Max. Fan RPM	Max. CFM	Max. Static Pressure in. wg
SQ-16	5	2010	7000	3
SQ-18	5	1812	8690	3
SQ-20	7-1/2	1650	10,900	3
SQ-22	10	1493	13,210	3
SQ-24	10	1360	16,470	3
SQ-27	10	1222	19,700	3
SQ-30	10	1107	22,810	3
SQ-33	15	995	27,490	3



Greenheck Fan Corporation certifies the model SQ fans shown herein are licensed to bear the AMCA Seal. The ratings shown are based on tests and procedures performed in accordance with AMCA Publication 211 and Publication 311 and comply with the requirements of the AMCA Certified Ratings Program.



UL is optional and must be specified.
Mixed flow inline fan model SQ is Listed for Electrical (UL/cUL 705) File no. E40001



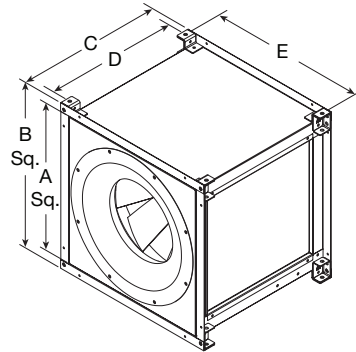
Model Specifications

Model SQ – Shall be direct drive, square in-line type housing, constructed of heavy gauge galvanized steel and a mixed flow style wheel. Fan construction shall include two removable access panels providing access to internal fan components. The access panels must be sufficient size to permit easy access to all interior components. The mixed flow wheel shall include a wheel cone carefully matched to the inlet cone for precise running tolerances. Wheels shall be statically and dynamically balanced. Motors shall be carefully matched to the fan loads. Motors shall be readily accessible for maintenance. Factory wiring shall be provided from motor to the handy box. All fans shall bear the AMCA Certified Ratings Seal for both sound and air performance. Each fan shall bear a permanently affixed manufacturer's nameplate containing the model number and individual serial number for future identification.

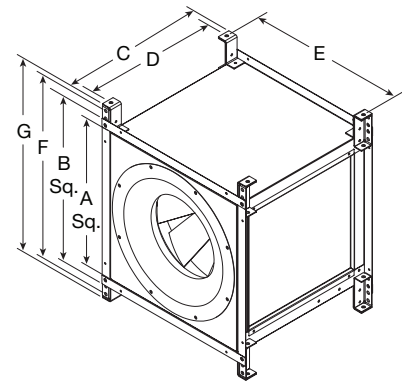
Fans shall be Model SQ as manufactured by Greenheck Fan Corporation, Schofield, Wisconsin, U.S.A.

Dimensions

Standard Mount



Universal Mount



Fan Size	A* Sq.	B* Sq.	C	D	E	F	G	Damper Size Sq.
16	24 (610)	27 (686)	24 (610)	21.80 (554)	25.75 (654)	29.88 (759)	31.63 (803)	24 (610)
18	26.59 (675)	29.59 (752)	26.59 (675)	24.39 (620)	28.34 (720)	32.46 (825)	34.21 (869)	26.5 (673)
20	29.18 (741)	32.18 (817)	29.18 (741)	26.98 (685)	30.93 (785)	35.05 (890)	36.80 (935)	29.25 (743)
22	32.05 (814)	35.05 (890)	32.05 (814)	29.85 (758)	33.80 (859)	37.93 (963)	39.68 (1008)	32 (813)
24	35.50 (902)	38.50 (978)	35.50 (902)	33.30 (846)	37.25 (946)	41.38 (1051)	43.13 (1095)	35.5 (902)
27	38.95 (989)	41.95 (1066)	38.95 (989)	36.67 (931)	40.78 (1036)	44.83 (1139)	46.58 (1183)	39 (991)
30	42.98 (1092)	45.98 (1168)	42.98 (1092)	40.70 (1034)	44.81 (1138)	48.85 (1241)	50.60 (1285)	43 (1092)
33	47.29 (1201)	50.29 (1277)	47.29 (1201)	45.01 (1143)	49.12 (1248)	53.16 (1350)	54.91 (1395)	47.25 (1200)

All dimensions given in inches (millimeters). *Dimensions A and B are same for height and width.

Our Commitment

As a result of our commitment to continuous improvement, Greenheck reserves the right to change specifications without notice.

Product warranties can be found online at Greenheck.com, either on the specific product page or in the literature section of the website at Greenheck.com/Resources/Library/Literature.