

Installation, Operation and Maintenance Manual

Please read and save these instructions for future reference. Read carefully before attempting to assemble, install, operate or maintain the product described. Protect yourself and others by observing all safety information. Failure to comply with these instructions will result in voiding of the product warranty and may result in personal injury and/or property damage.

Table of Contents

Bypass Air Plenum to Energy Recovery Plenum Document 1016722	2
Knock Down ERS Roof Curb Document 1016916	3-4
ERS Curb Insulation Clips Document 1016917	5
Fan Assembly to Roof Curb Document 1016918	6

Assembly Instructions

READ THROUGH THESE INSTRUCTIONS PRIOR TO STARTING ASSEMBLY.

Document Instructions

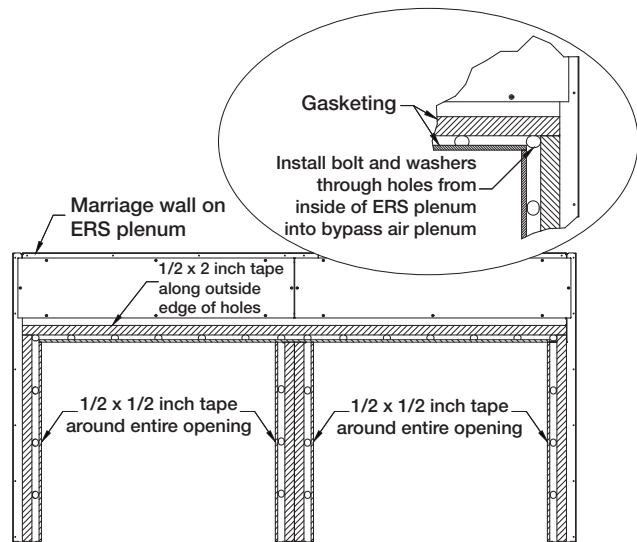
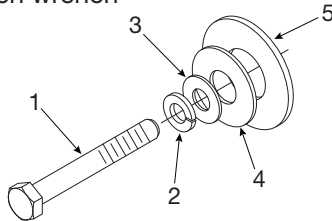
Use Document #1016722 with fastener kits 914746, 914747, 914748 and 914749. These kits are to be used with the Vektor-M series. The fasteners contained within the kit are to be used to join the bypass air plenum (BAP) to mating energy recovery plenum (ERS). Use the images located within this document to locate the position of the fasteners on the unit.

Assembly Instructions

1. See Greenheck Document #474118 (Installation, Operation and Maintenance Manual: Energy Recovery Laboratory Exhaust) for full installation instructions.
2. The fastener kit includes fasteners to attach one BAP to the ERS plenum. If the fan array includes multiple BAP sections, multiple fastener kits will be supplied.
3. See image on right to locate bolt holes. Install 316 stainless steel bolts with three washers from inside of the ERS plenum through the marriage wall into the threaded nut-inserts on mating wall of BAP.

Tools Required

- Cordless drill with 1/2 inch nut setter or 1/2 inch wrench



Plenum view from fan side

NOTE

If gasketing on marriage wall is missing, consult factory before installing hardware.

BAP TO ERS PLENUM FASTENER KIT		MD2 914746	MD3/MD4 914747	MD5/MD6 914748	MD7 914749
Part Description	Part #	Quantities			
1 CS,HH,.313-18X2.5,SS,316	416866	11	13	15	21
2 WSHR,LOCK,.313,SS,316	415811	11	13	15	21
3 WSHR,FLAT,.313X.045X.34X.75,SS,316	415798	11	13	15	21
4 WSHR,FLAT,.5X.06X.531X1.25,SS,316	415803	11	13	15	21
5 WSHR,FLAT,.75X.1X.812X1.75,SS,316	415830	11	13	15	21
Assembly Instructions	1016722	1	1	1	1

Assembly Instructions

READ THROUGH THESE INSTRUCTIONS PRIOR TO STARTING ASSEMBLY.

Document Instructions

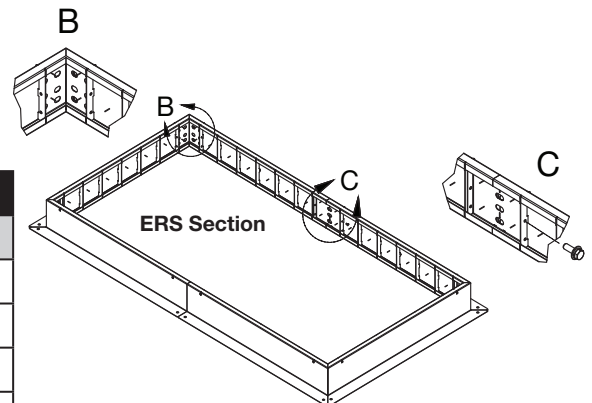
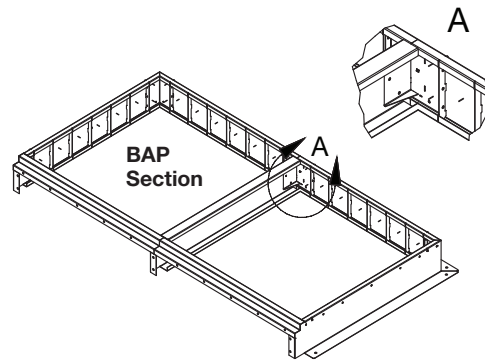
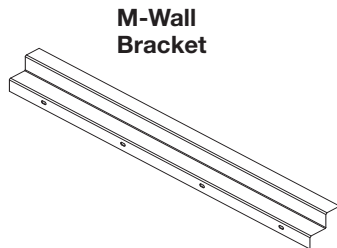
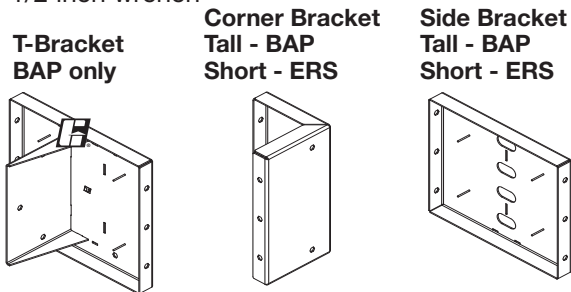
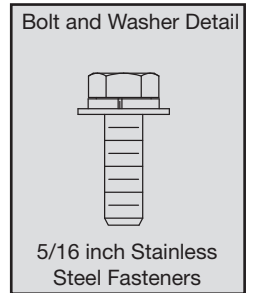
Use Document #1016916 with fastener kits 915007 – 915013. These kits are to be used with the Vektor-M Energy Recovery System (ERS) curbs. The fasteners contained within the kit are to be used to assemble and join the bypass air plenum (BAP) and ERS sections. Use images located within this document to locate the position of the fasteners on the unit.

Assembly Instructions for Curb Panels and Brackets (Fastener Kits 915007 – 915010)

1. See Greenheck Document #474117 (Fan Plenum Curb Assembly) for full installation instructions.
2. Fastener kit includes fasteners required to assemble BAP and ERS sections by joining curb panels with bolt in brackets (corner, side, "T", and M-wall). Depending on configuration, some kits may have extra hardware when completed.
3. See images below to locate bolt holes. Install moly-coated 316 stainless steel bolts through curb panels into brackets. Insulation pieces may need to be removed.
4. When curb is fully assembled, fasten insulation back into place using fastener kit 915014.

Tools Required

- Cordless drill (electric or pneumatic)
- 1/2 inch nut setter
- 1/2 inch wrench



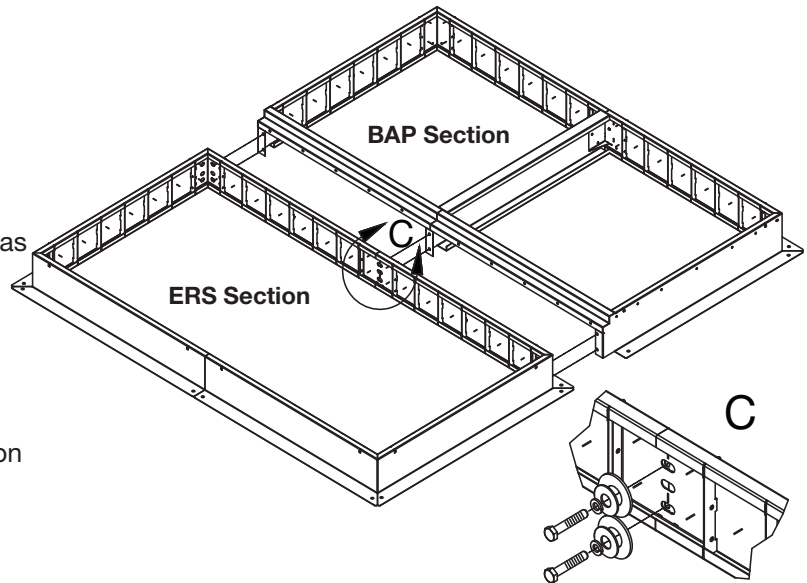
FASTENER KIT – BAP AND ERS CURB SECTIONS

Kit #	Part Description	Part #	Quantity
915007	CS,HH,,313-18X1,SS,316,MOLY	416511	56
915008			72
915009			84
915010			98
	Assembly Instructions	1016916	1

Assembly Instructions for BAP Section to ERS Section

(Fastener Kits 915011 – 915013)

1. See Greenheck Document #474117 (Fan Plenum Curb Assembly) for full installation instructions.
2. The fastener kit includes hardware to bolt together the BAP section to the ERS section as one unit.
3. See image to the right to locate bolt holes. Install 316 stainless steel bolts through brackets of ERS section into BAP section. Some insulation may need to be removed.
4. When curb is fully assembled, fasten insulation back into place using fastener kit 915014.



Tools Required

- Cordless drill (electric or pneumatic)
- 3/4 inch nut setter
- 3/4 inch wrench

FASTENER KIT 915011 – JOIN 1X1 BAP AND ERS SECTIONS

Part Description	Part #	Quantity
SCR,CS,HH,.5-13X1.5,SS,316	415782	4
NUT,HEX,.5-13,SS,316	415802	4
WSHR,LOCK,SPLIT,.5,SS,316	415809	4
WSHR,FLAT,.75X.1X.812X1.75,SS,316	415830	8
WSHR,FLAT,.05X.06X.531X1.25,SS,316	415803	8

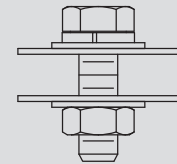
FASTENER KIT 915012 – JOIN 2X1 BAP AND ERS SECTIONS

Part Description	Part #	Quantity
SCR,CS,HH,.5-13X1.5,SS,316	415782	6
NUT,HEX,.5-13,SS,316	415802	6
WSHR,LOCK,SPLIT,.5,SS,316	415809	6
WSHR,FLAT,.75X.1X.812X1.75,SS,316	415830	12
WSHR,FLAT,.05X.06X.531X1.25,SS,316	415803	12

FASTENER KIT 915013 – JOIN 3X1 BAP AND ERS SECTIONS

Part Description	Part #	Quantity
SCR,CS,HH,.5-13X1.5,SS,316	415782	8
NUT,HEX,.5-13,SS,316	415802	8
WSHR,LOCK,SPLIT,.5,SS,316	415809	8
WSHR,FLAT,.75X.1X.812X1.75,SS,316	415830	16
WSHR,FLAT,.05X.06X.531X1.25,SS,316	415803	16

Bolt and Washer Detail



1/2 inch Bolt
 1/2 inch Lock Washer
 1/2 inch Flat Washer (2)
 3/4 inch Flat Washer (2)
 1/2 inch Nut

Assembly Instructions

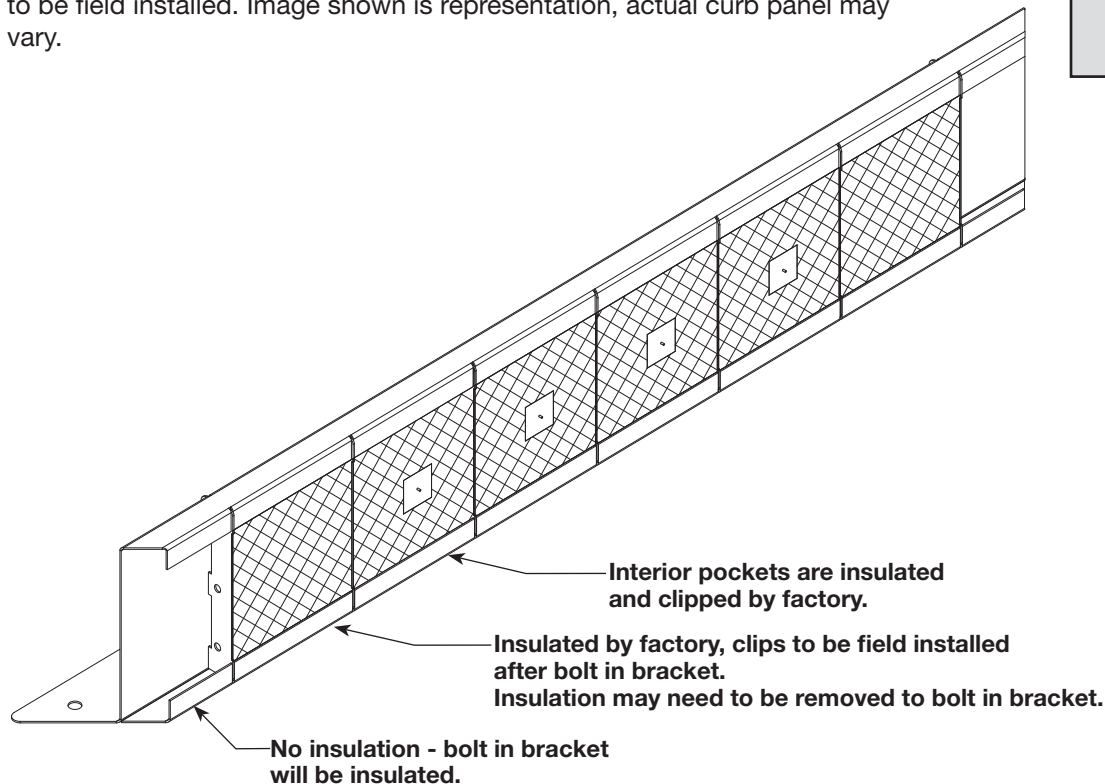
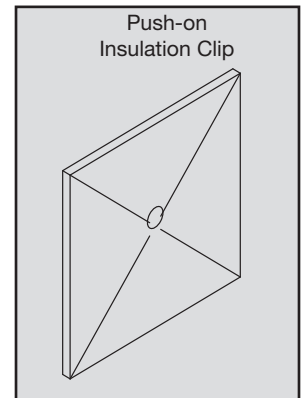
READ THROUGH THESE INSTRUCTIONS PRIOR TO STARTING ASSEMBLY.

Document Instructions

Use Document #1016917 with fastener kit 915014. This kit is to be used with the Vektor-M Energy Recovery System (ERS) curbs. The insulation clips provided are to secure insulation pieces to the roof curb panels when assembly of curb is complete. Use images located within this document to locate the position of the fasteners on the unit.

Assembly Instructions

1. See Greenheck Document #474117 (Fan Plenum Curb Assembly) for full installation instructions.
2. The fastener kit includes insulation clips to secure insulation to curb panels. In some cases, pieces of insulation may need to be removed prior to bolting in brackets. When all brackets are installed and the insulation is replaced, the clips can be pushed onto insulation pins. Do not install clips until curb is fully assembled.
3. See image below to locate which insulation pieces require insulation clips to be field installed. Image shown is representation, actual curb panel may vary.



FASTENER KIT 915014 – ERS CURB, INSULATION CLIPS

Part Description	Part #	Quantity
CLW,INSUL,1.5X1.5,GALV.	415660	36
Assembly Instructions	1016917	1

Assembly Instructions

READ THROUGH THESE INSTRUCTIONS PRIOR TO STARTING ASSEMBLY.

Document Instructions

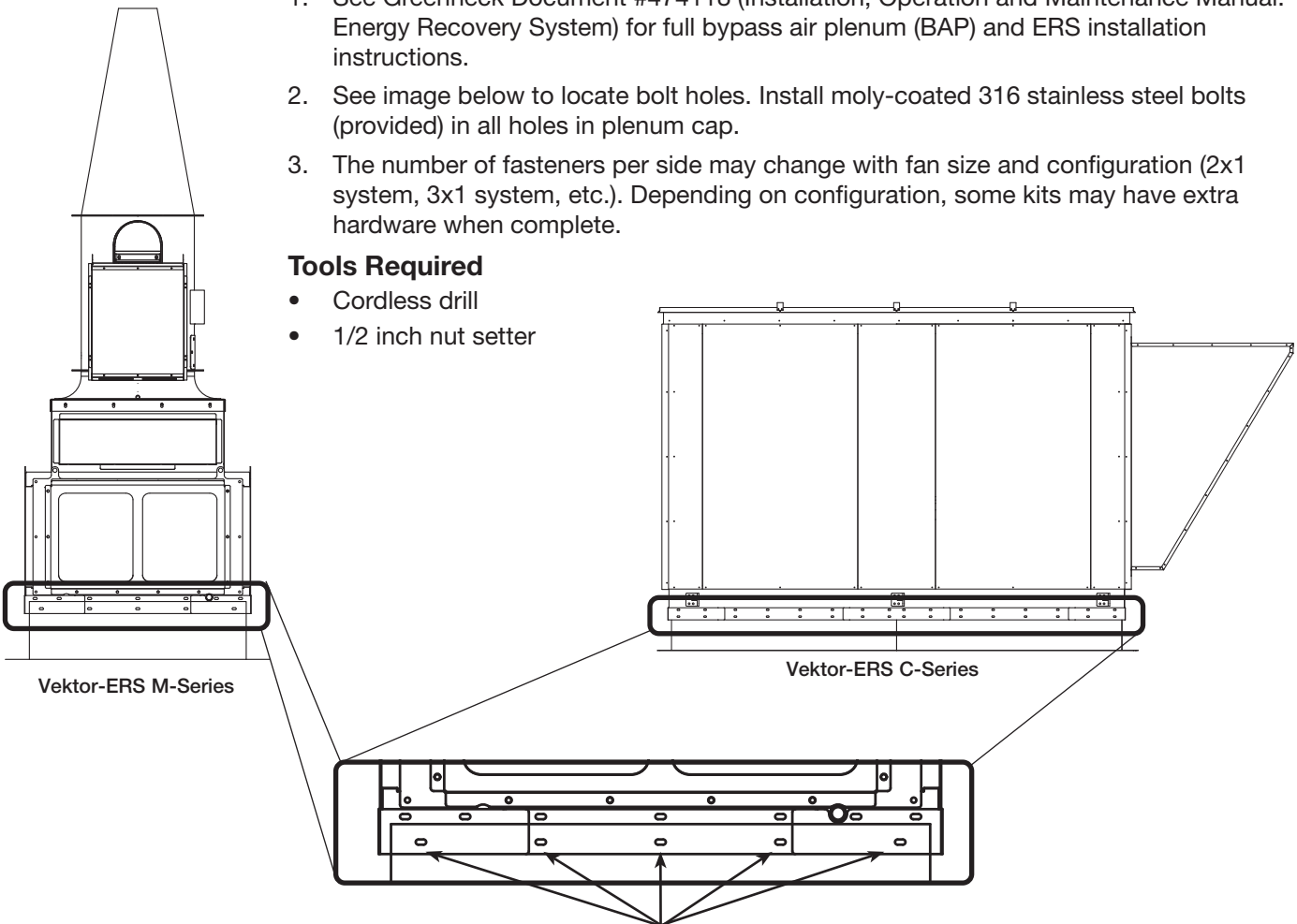
Use Document #1016918 with fastener kits 915003-915006. This kit is to be used with the Vektor-ERS (Energy Recovery System). The fasteners contained within the kit are to be used to attach the plenum assembly to the roof curb. Use images located within this document to locate the position of the fasteners on the unit.

Assembly Instructions

1. See Greenheck Document #474118 (Installation, Operation and Maintenance Manual: Energy Recovery System) for full bypass air plenum (BAP) and ERS installation instructions.
2. See image below to locate bolt holes. Install moly-coated 316 stainless steel bolts (provided) in all holes in plenum cap.
3. The number of fasteners per side may change with fan size and configuration (2x1 system, 3x1 system, etc.). Depending on configuration, some kits may have extra hardware when complete.

Tools Required

- Cordless drill
- 1/2 inch nut setter



**Install supplied bolts through
BAP skirting into roof curb.**

FASTENER KIT – FAN ASSEMBLY TO ROOF CURB*

Kit #	Part #	Part Description
915003 - 915006	416980	CS,HH,.313-18X2,SS,316,MOLY

*Kits will be duplicated depending on configuration of system.