

# DS-6 | HVLS

8 TO 24-FOOT FAN DIAMETERS

## Elevated Engineering

As the industry's top performing overhead HVLS fan, Greenheck's DS-6 delivers the best combination of airflow, efficiency and low-sound operation. Its powerful six-blade design is engineered to provide high volume air movement over massive coverage areas, boosting comfort in even the largest spaces. With its cutting-edge direct drive motor and VFD, Greenheck's DS-6 is guaranteed to provide years of reliable operation and cost savings—making it a smart choice for any facility.

### DIAMETER

- Fan diameters between 8 - 24 feet

### AIRFLOW AND COOLING

- Airflow range up to 243,000 cfm
- Cooling effect up to 15°F

### MOTOR AND VOLTAGE

- 3/4 to 1-1/2 hp, direct drive motor
- Reversible operation
- 208-277V/1-phase; 208-230V/3-phase or 460V/3-phase voltage

### MOUNTING OPTIONS

- I-beams, steel trusses, wood beams, z-purlins, Unistrut®

### WARRANTY

- 10-year mechanical
- 1-year electrical

## PRIMARY APPLICATIONS

Warehouses | Distribution Centers | Manufacturing Facilities | Automotive Garages or Dealerships  
Police and Fire Stations | Fitness Centers | Military Facilities | Public Works Facilities  
Aviation Facilities and Airports | Stadiums and Arenas

# DS-6 | HVLS

8 TO 24-FOOT FAN DIAMETERS



## STANDARD FEATURES

### PLUG-AND-PLAY WIRING



Factory-installed wiring with plug-and-play connectors for all major electrical connections including:

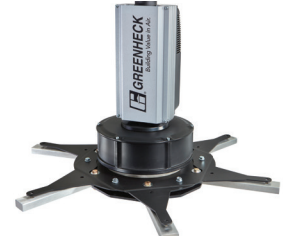
- Supply wiring to the VFD and motor
- Communication wiring to fan controller
- Fire system integration wiring

### UNIVERSAL CEILING MOUNT



Designed to mount to any ceiling structure via one of Greenheck's optional mounting kits or field-supplied hardware. Universal mount also includes a pivoting knuckle joint to accommodate any ceiling pitch.

### DIRECT DRIVE MOTOR AND VFD



Lightweight, direct drive motor is up to 20% more efficient and 10 dBA quieter than traditional gearbox motors. Factory-mounted and programmed VFD reduces installation time by eliminating complicated programming in the field.

### AIRFOILS AND WINGLETS



Aluminum airfoils are designed to maximize airflow, boost efficiency, and optimize coverage area. Airfoils are available in mill, powder-coat, woodgrain, or anodized finishes. Winglets are designed to reduce fan noise.

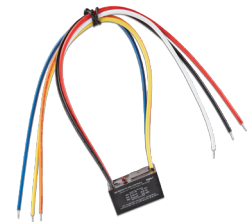
### ADVANCED SAFETY FEATURES



Factory-installed multipoint, redundant mechanical safety systems ensure proper function and peace of mind. Smart electronic safety features include:

- Impact detection for immediate fan shutdown
- Over-voltage, over-current, over-temperature, and over-speed protection

### FIRE SYSTEM INTEGRATION



All fans include a low voltage fire alarm relay that can be wired into the building's fire suppression system for automatic fan shutdown when sprinklers are activated.

## PERFORMANCE DATA

FAN SIZE (ft)	MAX AIRFLOW (CFM)	MAX COVERAGE AREA (ft <sup>2</sup> )	MAX RPM	MOTOR SIZE (HP)	SOUND (dBA)	WEIGHT* (lbs)
8	28,600	11,300	142	3/4	45	129
10	46,700	13,600	136	3/4	49	138
12	71,900	14,500	119	3/4	49	147
14	92,300	15,300	97	3/4	49	156
16	110,000	16,200	81	3/4	48	165
18	128,100	18,100	69	3/4	47	174
20	196,200	21,600	78	1-1/2	52	204
24	243,000	23,700	61	1-1/2	50	222

\*Weight does not include accessories or optional features.



Greenheck Fan Corporation certifies that the model DS-6 shown herein is licensed to bear the AMCA Seal. The ratings shown are based on tests and procedures performed in accordance with AMCA Publication 211 and comply with the requirements of the AMCA Certified Ratings Program.



UL/cUL 507  
Listed for Electrical and Damp  
File no. E504380

[greenheck.com/hvls](https://greenheck.com/hvls)

P.O.Box 410 | Schofield, WI 54476 | 715-359-6171 00.F&V.NB020 R2 2-2024 © 2024 Greenheck Fan Corp.

