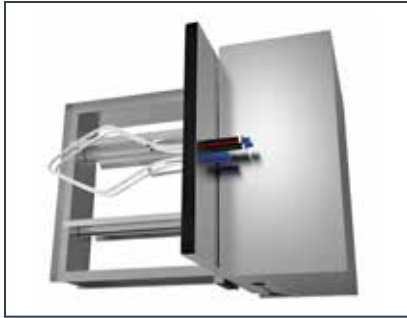


XG-SR-500 SQUARE RETROFIT AIR TERMINAL UNIT

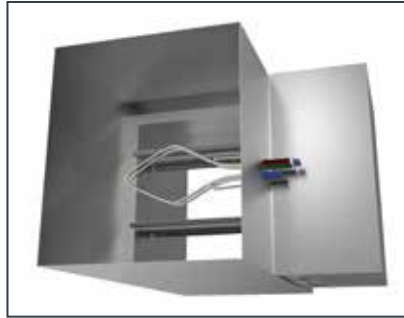
SPECIFIABLE FEATURES

- Minimum 20 gauge galvanized steel frame and opposed damper blades
- Metal inlet flow sensor with extra balancing taps
- Standard 20 gauge control mounting panel and cover
- Available in sizes 10"W x 6"H to 36"W x 24"H (1" increments) handling capacities from 100 CFM – 18,000 CFM
- Available with optional factory provided pneumatic, electric, DDC, or electronic controls

INDEX OF SECTIONS	PAGE
Dimensional Data	4
Control Sequence Offerings	6



XG-SR-502B



XG-SR-502D



XG-SR-502EX

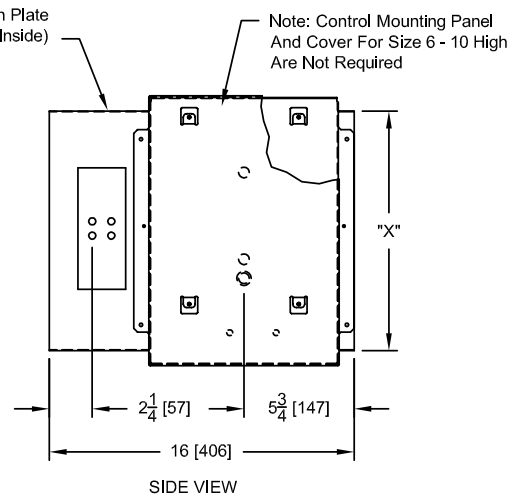
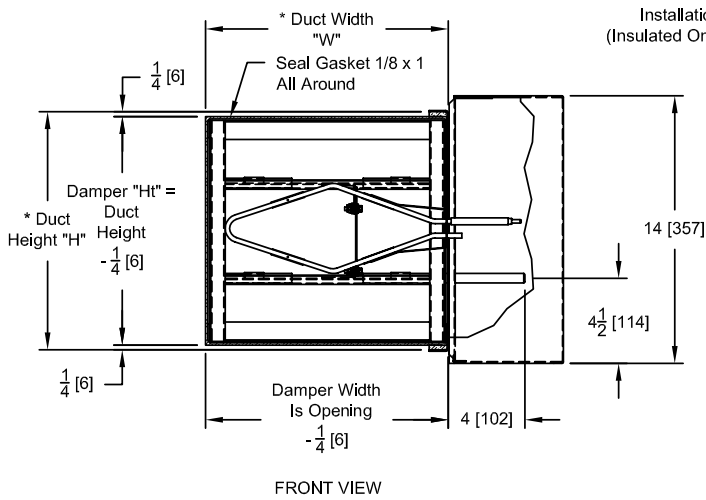
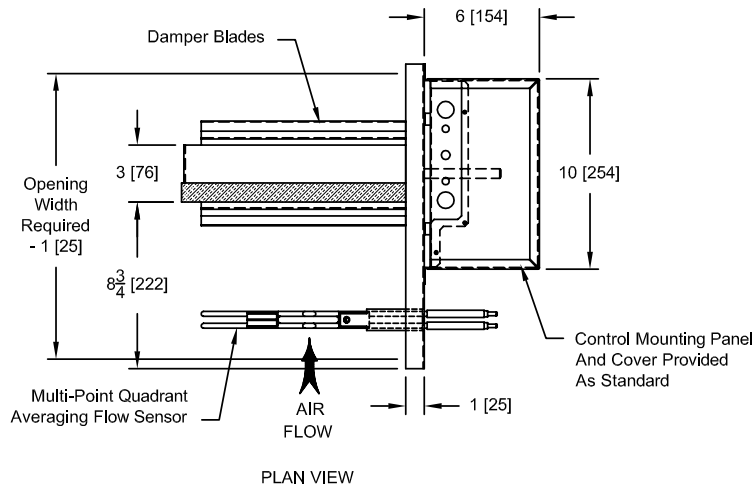
XG-SR-500 SQUARE RETROFIT AIR TERMINAL UNITS

The Greenheck series XG-SR-500 products are designed to fit into existing low pressure square or rectangular duct systems. The XG-SR-500 is available in three versions: Model XG-502B is a slip-in unit for existing ductwork. Model XG-502D is designed for use in 24" duct sections as a basic VAV terminal. Model XG-502EX is a 46" exhaust unit with inlet sound attenuator and flow sensor.

STANDARD FEATURES

- XG-SR-500 is available in multiple sizes up to 24" x 36" to handle 100–18,000 CFM.
- Minimum 20 ga. galvanized steel casing.
- Galvanized steel damper with minimum 20 ga. 3V style opposed blades.
- Optional blade seals and jamb seals available.
- Optional factory calibrated controls per each job requirement.
- Multi-quadrant, averaging flow sensor for highly accurate (+/-5%) flow readings with varying inlet duct configurations after certified balancer has balanced terminal.
- Externally accessible, steel balancing taps.
- External control cabinet with offset mounting plate as standard.

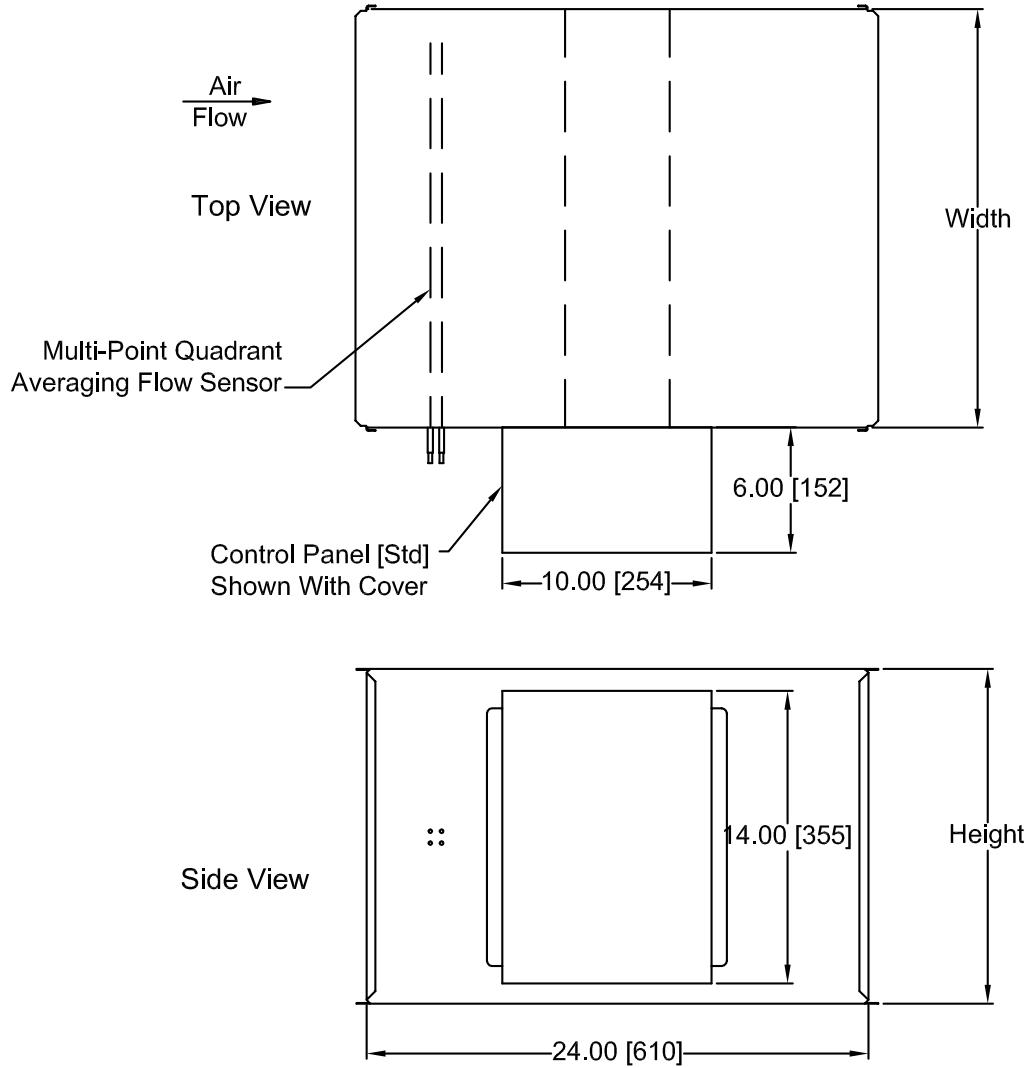
XG-SR-500 SQUARE RETROFIT



Duct Height "H"		Duct Width "W"	
Min.	Max.	Min.	Max.
6 (152)	24 (610)	10 (254)	36 (914)

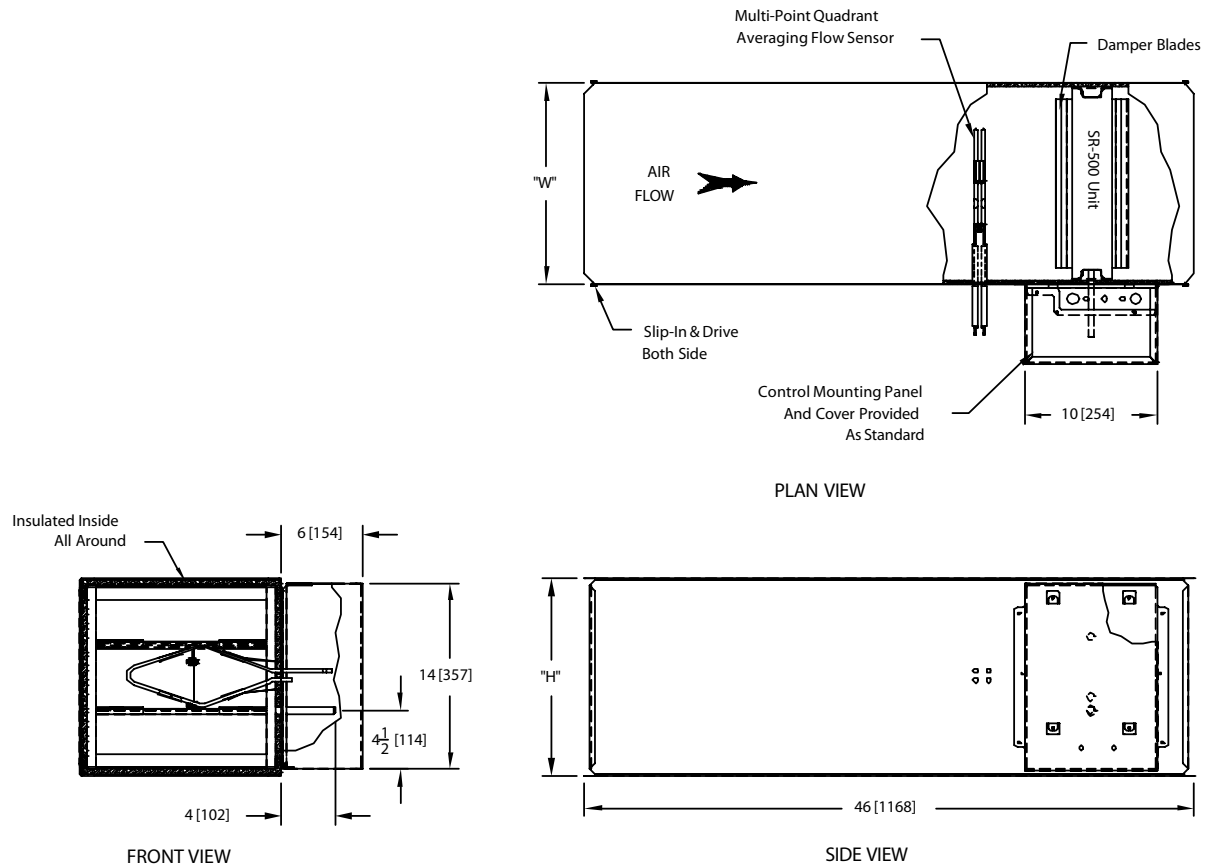
1. $X = \text{Nominal duct height} + 1/2$ (8" Minimum)
2. Installation plate material – 20 ga. steel
3. Dampers available in 1" increments between minimum / maximum limits.
4. When ordering, specify nominal duct width (W) first, then height (H).
 Example: Series XG-SR-500 20" x 12" = 20" wide x 12" high unit.

XG-SR-502-D RECTANGULAR RETROFIT



*The standard location for control panel is Right Hand on Model XG-SR-502-D.
Looking in the direction of airflow, the control panel is on the right.*

XG-SR-502-EX SQUARE RETROFIT WITH INLET SOUND ATTENUATOR FOR EXHAUST APPLICATIONS



Duct Height "H"		Duct Width "W"	
Min.	Max.	Min.	Max.
6 (152)	24 (610)	10 (254)	36 (914)

XG-SR-500 CONTROL SEQUENCE OFFERINGS



PPD—PNEUMATIC PRESSURE DEPENDENT

- Direct Acting / Normally Closed (DA / NC)
- Reverse Acting / Normally Open (RA / NO)



PPI—PNEUMATIC PRESSURE INDEPENDENT

- Direct Acting / Normally Closed (DA / NC)
- Direct Acting / Normally Open (DA / NO)
- Reverse Acting / Normally Closed (RA / NC)
- Reverse Acting / Normally Open (RA / NO)
- Static Pressure Control



EPD—ELECTRIC PRESSURE DEPENDENT

- Cooling Only
- Cooling with Reheat
- Static Control
- Actuator Only



API—ANALOG PRESSURE INDEPENDENT

- Cooling Only
- Cooling with Heat
- Night Setback / Morning Warm-up
- Heating / Cooling Changeover
- Static Pressure Control



DDC—DIRECT DIGITAL CONTROL

BACnet

- Cooling Only
- Cooling or Heating
- Hot Water Reheat
- Electric Reheat