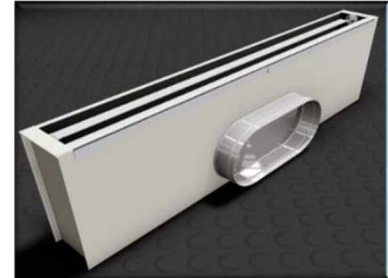


Installation and Operation

Installation:

1. Locate T-bar grid in which the MLAD will be installed.
2. Install the MLAD into the grid making sure that the weight is evenly supported.
3. Connect ductwork to the neck collar ensuring the duct is securely attached



Operation:

1. To calibrate the heating mode airflow position, provide heated air to the MLAD at the same temperature that is used during heating mode.
2. As the hot air is coming out of the unit, adjust the bimetallic coil in the side of the MLAD to ensure the airflow is vertically oriented.
3. When cooling mode is enabled, the diffuser will automatically change the airflow position to horizontal without any electricity.



Horizontal Airflow: Cooling Mode



Vertical Airflow: Heating Mode