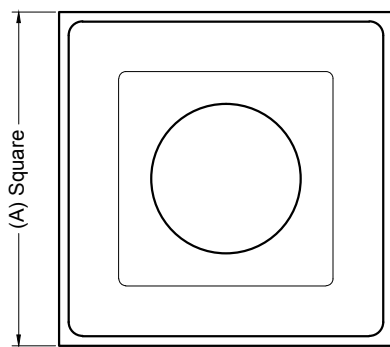
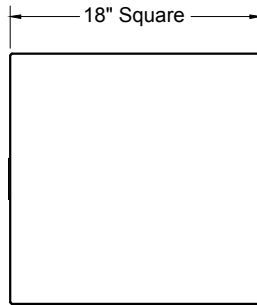


Thermally Powered Plaque Diffuser VAV Cooling Only

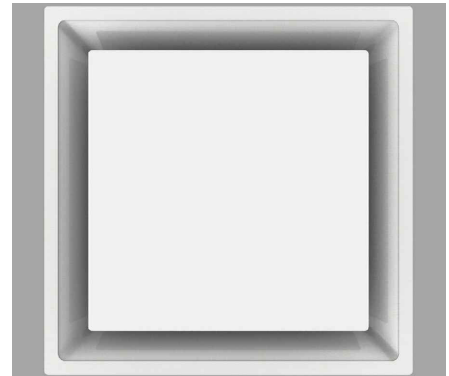
Models:	XG-MSC-1	Thermally Powered Plaque Diffuser Cooling Only & Cooling Surface Mount W/TBPF
	XG-MSC-6	Thermally Powered Plaque Diffuser Cooling Only T-Bar Lay-In
	XG-MSC-8	Thermally Powered Plaque Diffuser Cooling Only TegularT-Bar
	XG-MSC-9	Thermally Powered Plaque Diffuser Cooling Only Bolt Slot / Donn Fineline Ceiling Grid



Face View - Panel

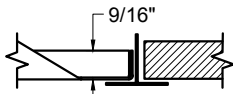


Face View - Plaque Center Panel



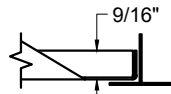
X = Inlet sizes (6", 8", 10" or 12")

Model	A - Diffuser Panel
XG-MSC-1	24 3/4"
XG-MSC-6	23 3/4"
XG-MSC-8	23 3/4"
XG-MSC-9	23 3/4"



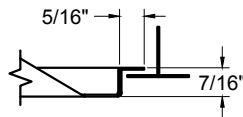
XG-MSC-1

(Surface Mount W/TBPF)



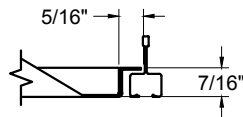
XG-MSC-6

(Lay-In Turned Up Edge)



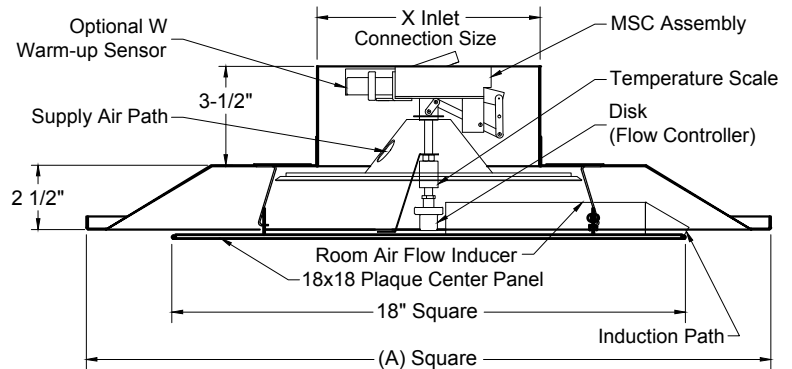
XG-MSC-8

(Tegular Lay-In)



XG-MSC-9

(Donn Fineline Ceiling Grid)



Induction Path

A small amount of supply air is diverted through an orifice against an induction wing then back into primary air path. This creates just enough negative pressure to induce a continuous sample of secondary room air around the edge of the face panel through the induction trough located at the leading edge of the face panel and across the thermal actuator.

VAV cooling control. Room air is induced past a thermal actuator, which then adjusts airflow based on space requirements. the actuator is mechanical and requires no electrical or pneumatic connectors.

Notes: ☐ (check if provided)

1. Available Finishes	2. Available Accessories	3. Available Options	4. Construction Details
Standard Finish: 01 White Baked Enamel	XG-TBPF - Lay-In Plaster Frame For 1-Units. XG-BAF - Directional Baffles XG-BPRA - By-Pass Relief Adapter	XG-W - Non-Adjustable Full Warm-Up Cycle Control Function	<ul style="list-style-type: none"> ● 24 Gauge Electro-Galvanized Steel. ● Panel Size 24 x 24 Only. ● Inlet Sizes 6", 8", 10" & 12". ● Controls: Self -Contained Thermally Activated VAV Control