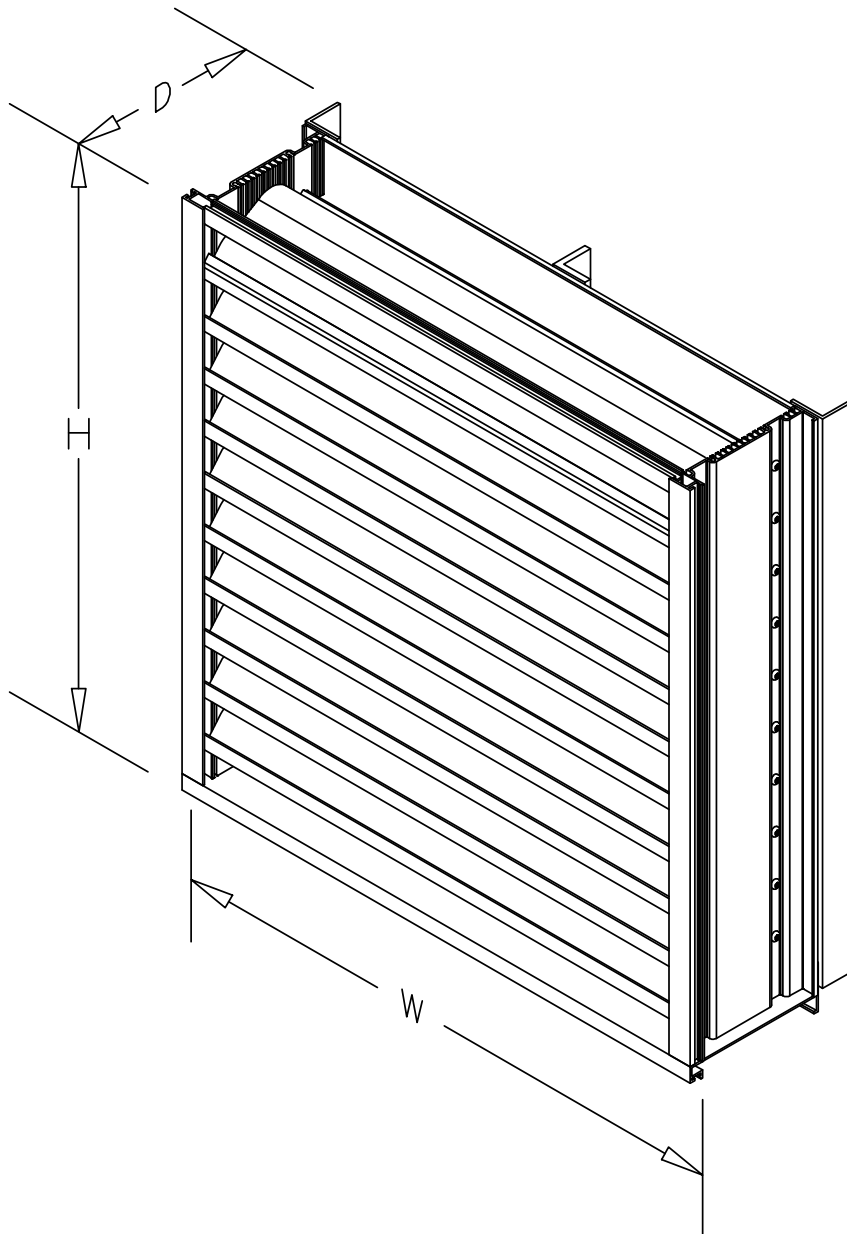


## Installation, Operation and Maintenance Manual

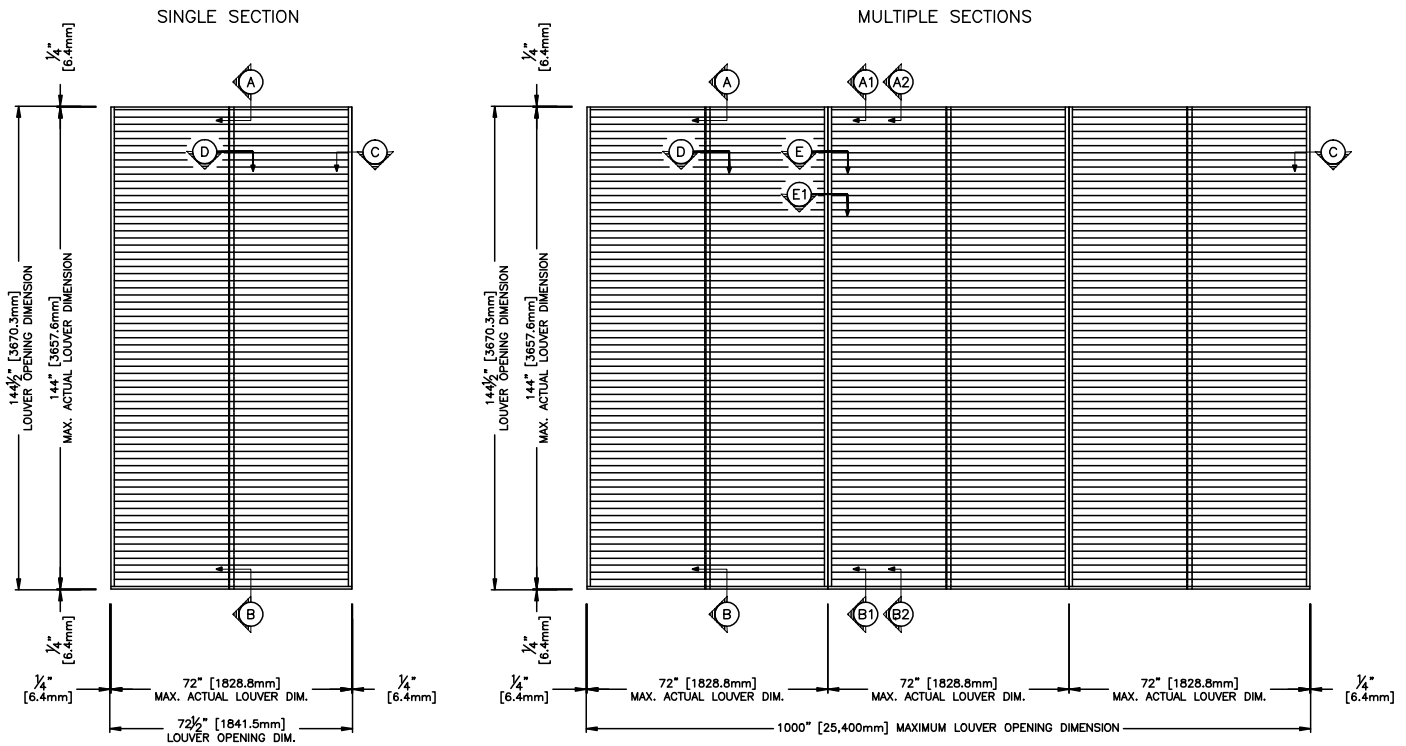
Please read and save these instructions for future reference. Read carefully before attempting to assemble, install, operate or maintain the product described. Protect yourself and others by observing all safety information. Failure to comply with these instructions will result in voiding of the product warranty and may result in personal injury and/or property damage.

Florida Product Approval No: FL10093  
Miami-Dade NOA No.: 17-0919.07  
Maximum Wind-load: 150 PSF



## Maximum Size and Installation Information

Model SCH601MD is a Miami-Dade Qualified and Florida Product Approved louver and must be installed in accordance with the installation instructions shown herein. Model SCH601MD is qualified for installation within concrete/masonry, steel stud, structural steel or wood framed building conditions. Model SCH601MD is structurally calculated to withstand positive and negative wind-loads up to 150 PSF. The maximum single section rough opening width is 72.75 in. The maximum single section rough opening height is 144.50 in. While the maximum rough opening height is limited to 144.50 in., the rough opening width is limited to 1,000 in. as multiple sections may be installed side by side in accordance with installation instructions.



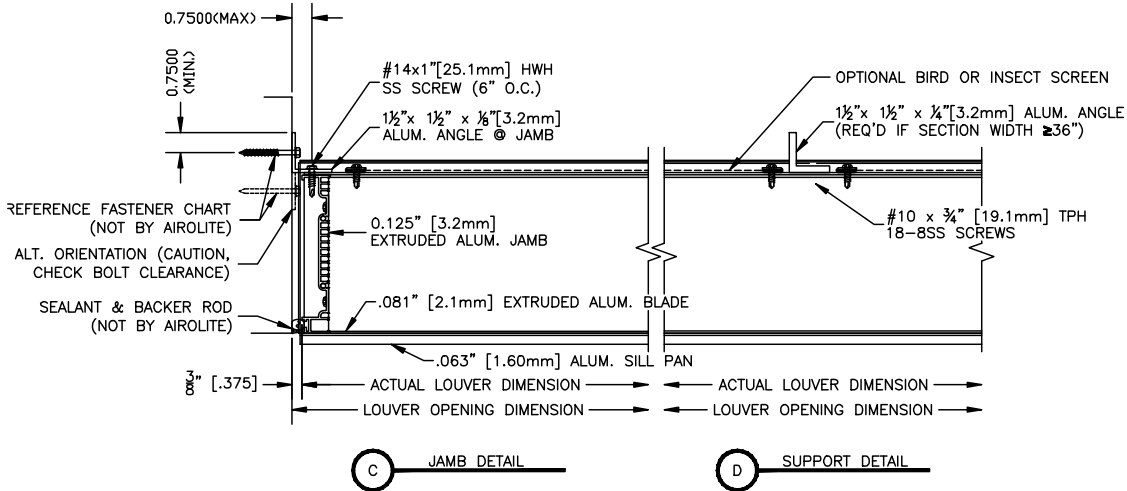
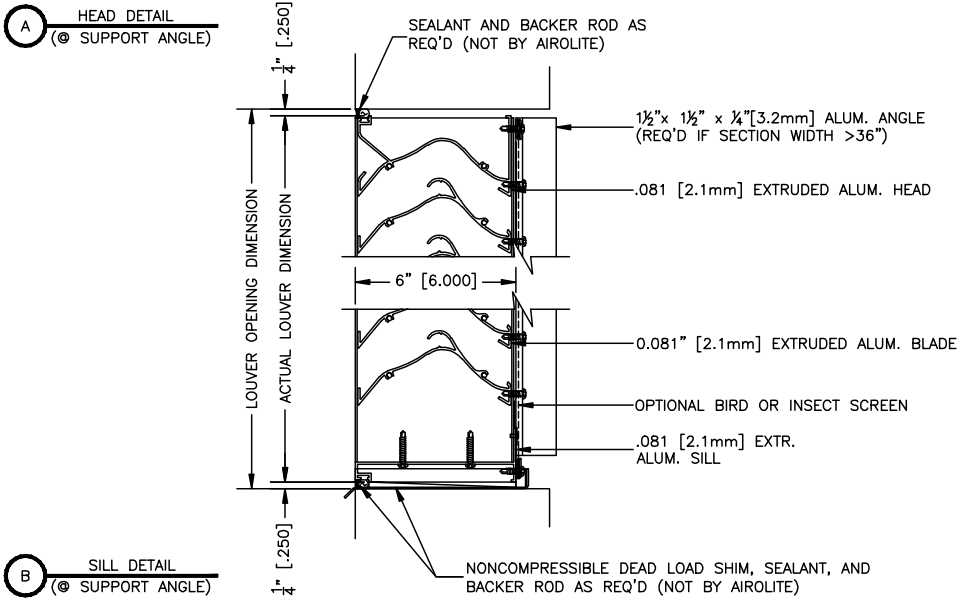
**Minimum Rough  
 Opening Size**  
 12 in. W x 7 in. H

**Maximum Single Section  
 Rough Opening Size**  
 72.75 in. W x 144.50 in. H

## Building Condition/Substrate Limitations

- All metal stud substrate should be min. 10 Ga. FY= 36 KSI
- All structural steel substrate shall be min. 0.125 in. thick FY= 36 KSI
- All concrete substrate shall be min. 4000 PSI (2000 PSI allowed with SDR)
- Concrete masonry shall be ASTM C90, Type II, 2000 PSI, grout-filled

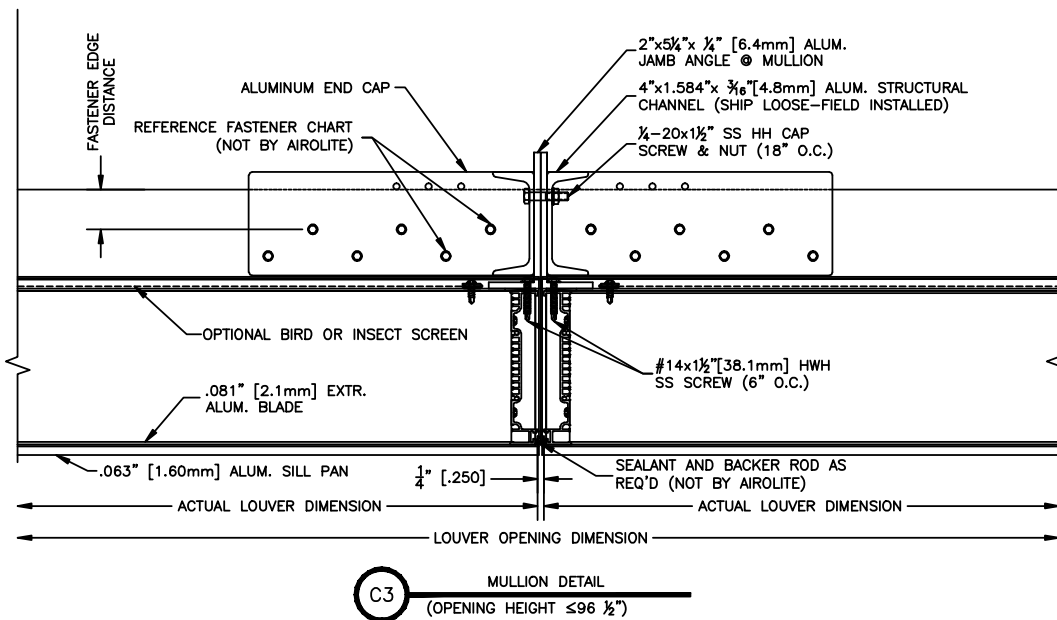
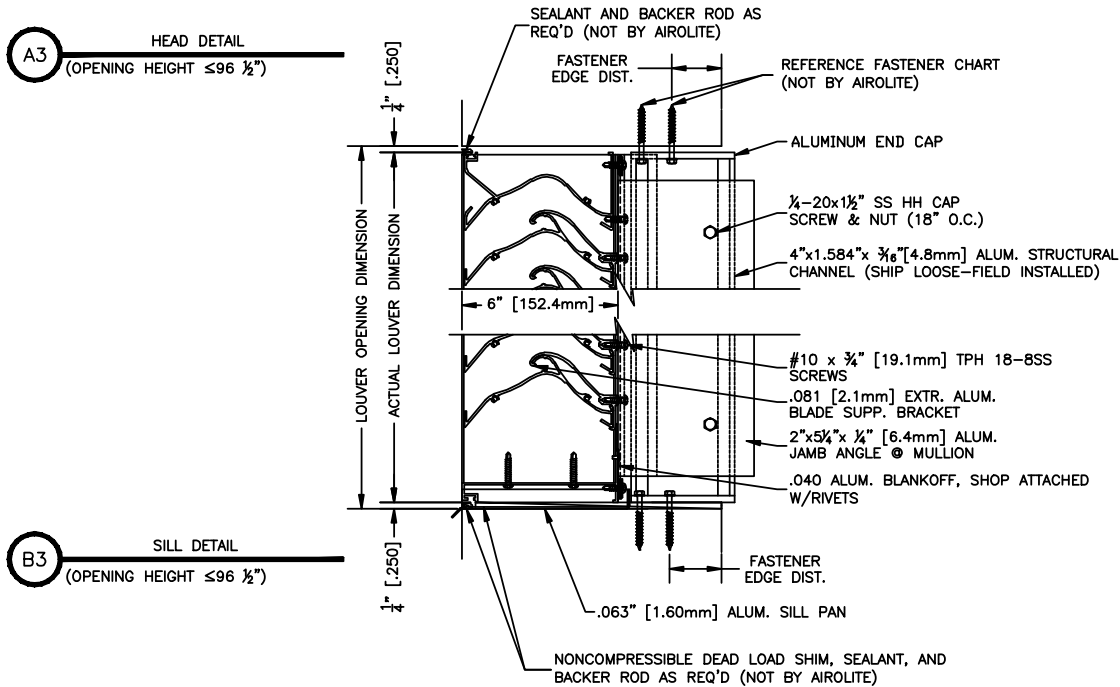
**Single Section**



## Multiple Sections

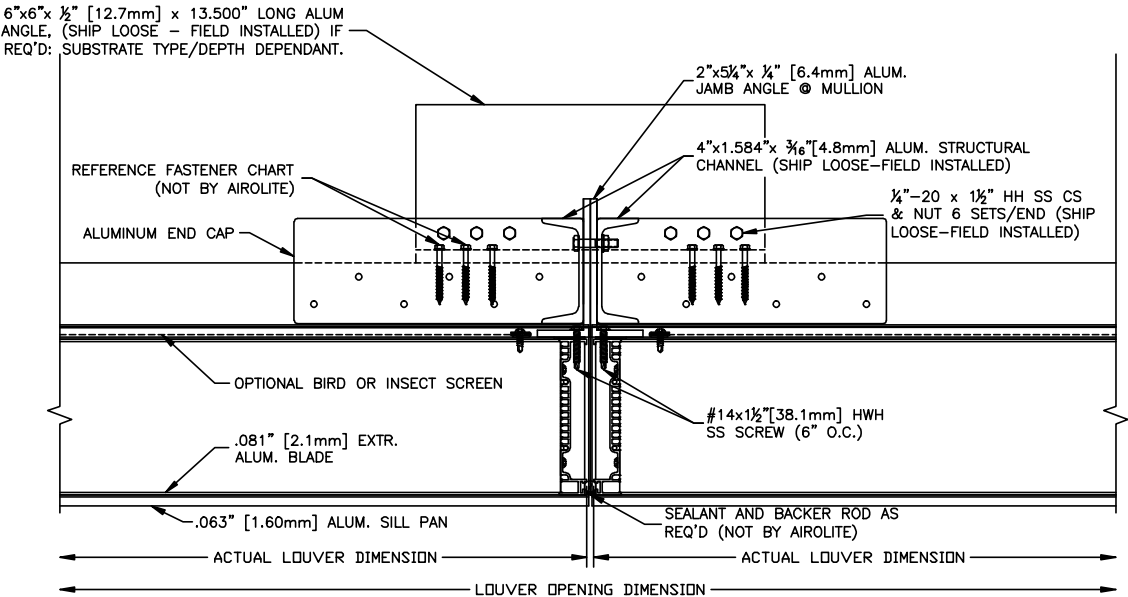
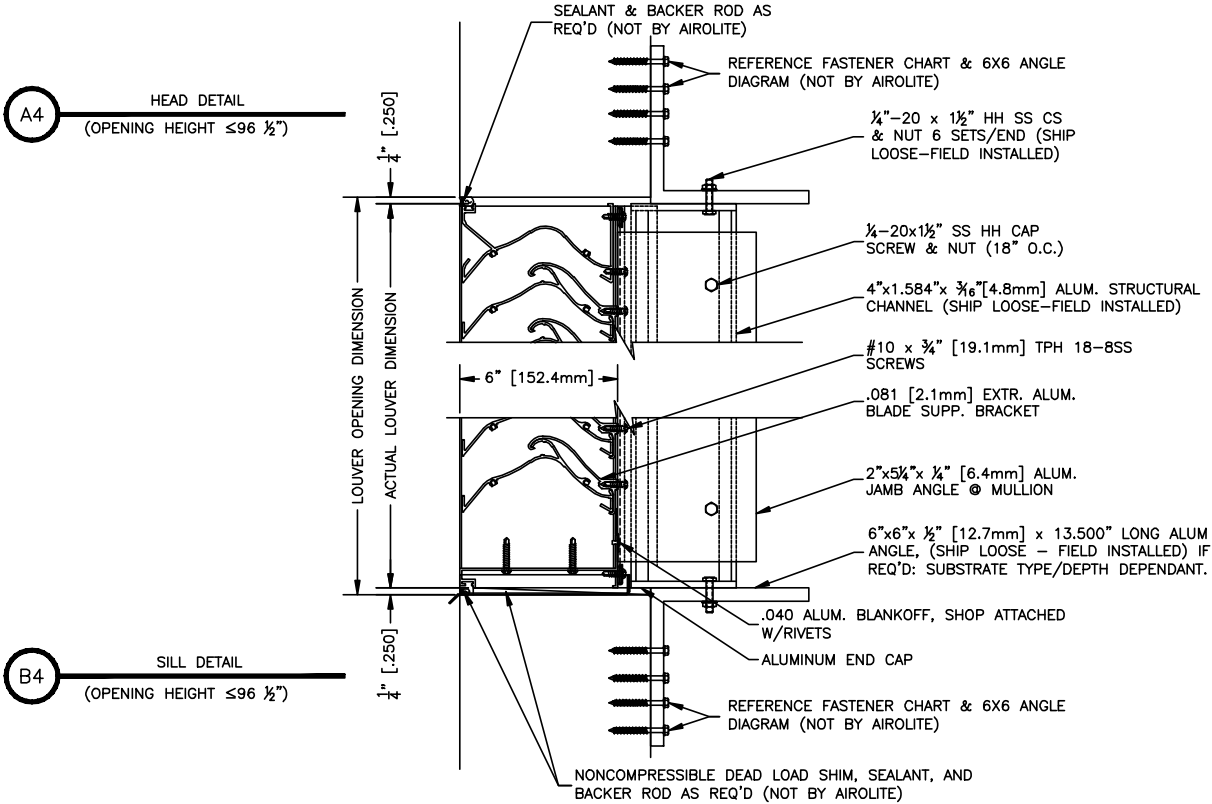
Height  $\leq 96 \frac{1}{2}$ "

Reference page 5 for alternate head/sill detail.



**Multiple Sections**

Height  $\leq 96 \frac{1}{2}$

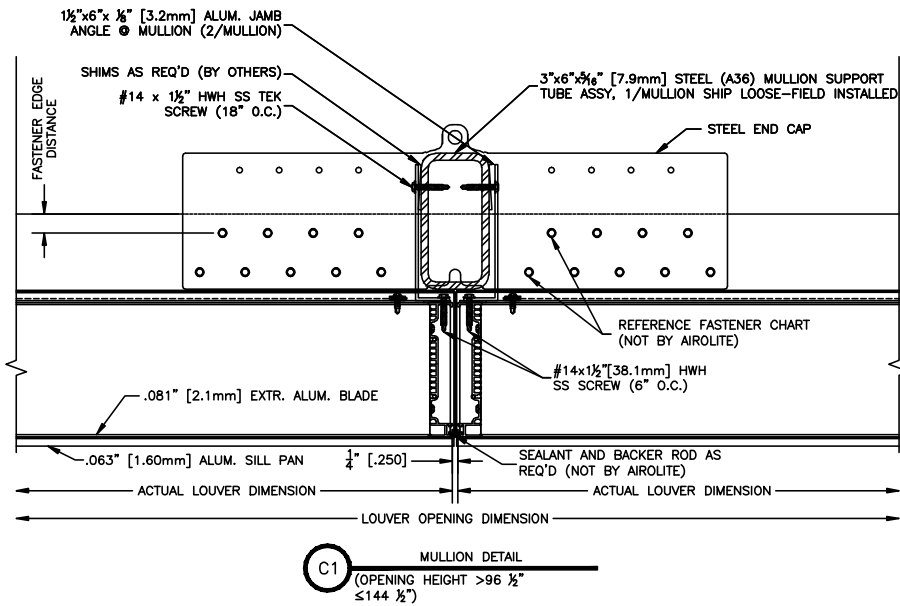
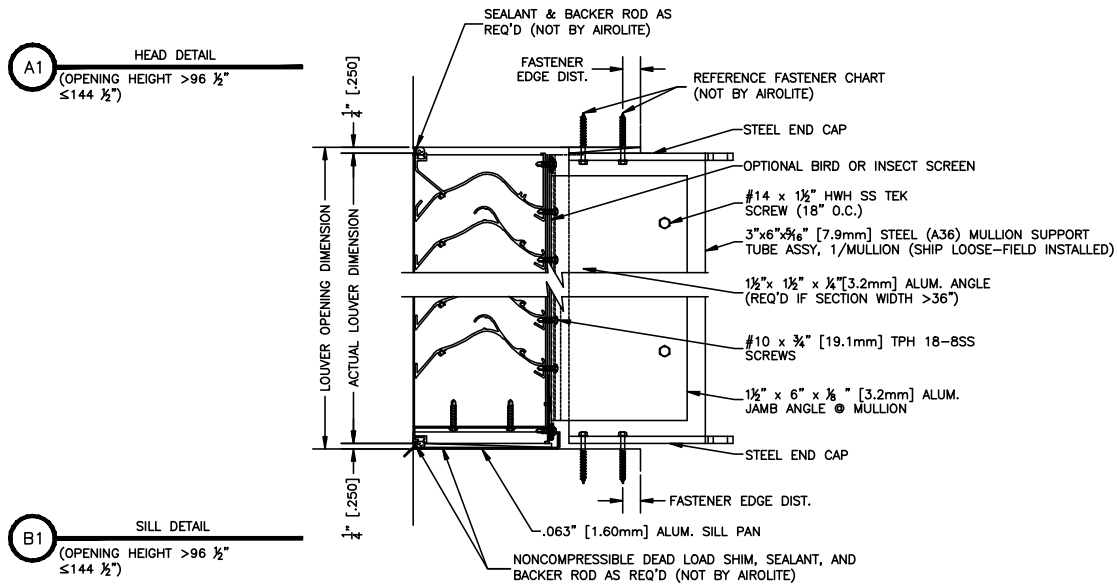


**C4** MULLION DETAIL  
 (OPENING HEIGHT  $\leq 96 \frac{1}{2}$ )

## Multiple Sections

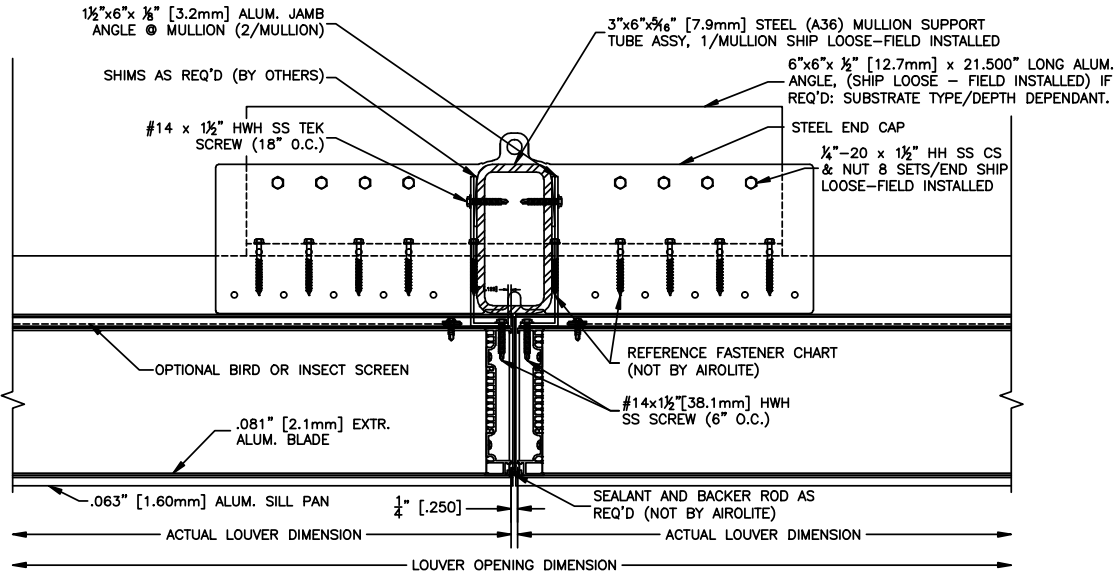
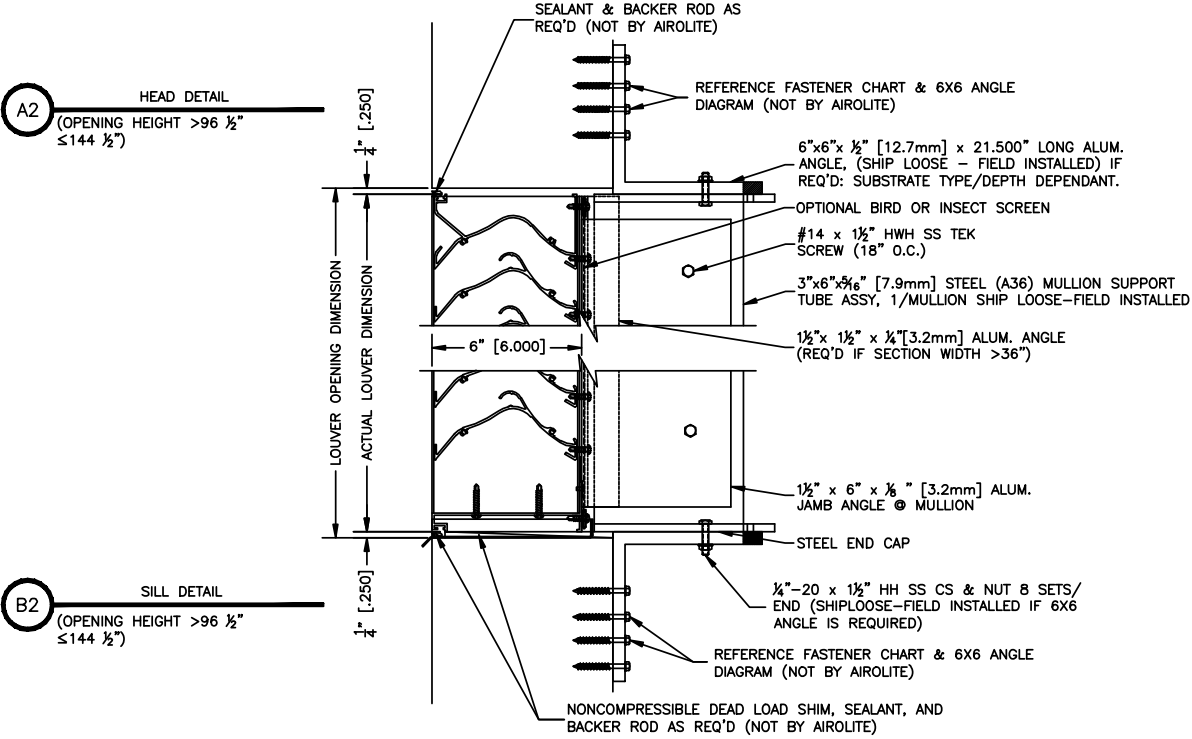
Height  $> 96 \frac{1}{2} \leq 144 \frac{1}{2}$

Reference page 7 for alternate head/sill detail.

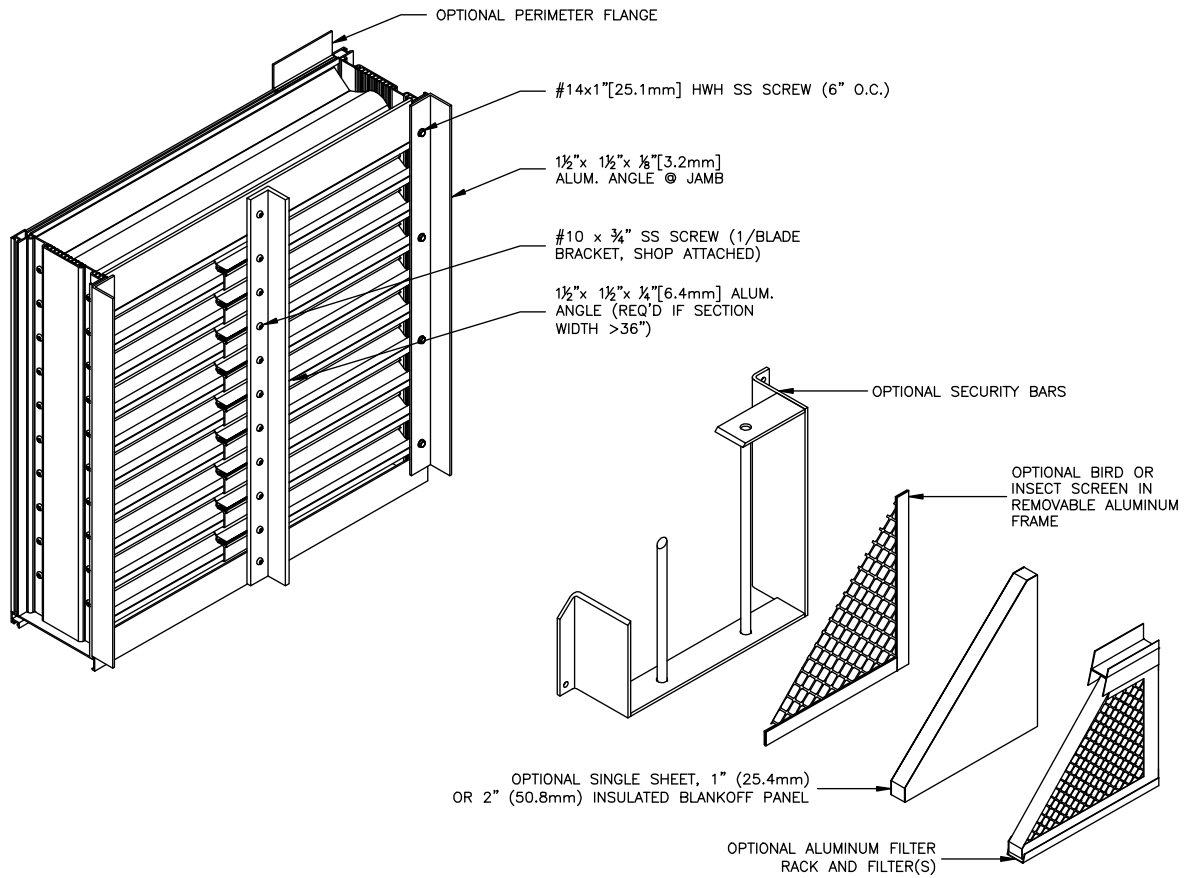


**Multiple Sections**

Height > 96 1/2 ≤ 144 1/2



# Single Section



Structure Depth	
<p><b>CMU / Concrete Substrate</b></p> <ul style="list-style-type: none"> <li>• Min. structure depth 6.866 in.</li> <li>• Max. structure depth infinite</li> </ul>	<p><b>Steel Stud / Structural Steel Substrate</b></p> <ul style="list-style-type: none"> <li>• Min. structure depth 5.866 in.</li> <li>• Max. structure depth infinite</li> </ul>

FASTENER SCHEDULE (FIELD INSTALLED - NOT BY AIROLITE)										
CONCRETE	CMU	STEEL	MIN.	FASTENER TYPE	DIAMETER	# RQD.	CENTERS	EDGE	EMBED.*	
JAMB PERIMETER ANGLE FASTNER										
X			2KSI	SCOTS TAPCON / TAPCON	1/4	VARIES	4.750	1.500	1.750	
X			4KSI	SCOTS TAPCON / TAPCON	1/4	VARIES	6.000	1.500	1.750	
	X		1.5KSI	SCOTS TAPCON / TAPCON	1/4	VARIES	3.000	1.500	1.750	
		X	65KSI Fy	BOLT/NUT OR TAPPING SCREW	1/4	VARIES	6.000	0.500	0.125	
MULLION END PLATE FASTENER, HEIGHT <=144										
X			2KSI	SCOTS TAPCON / TAPCON	1/4	9/END	2.000	1.500	1.625	
X			4KSI	SCOTS TAPCON / TAPCON	1/4	8/END	2.000	1.500	1.625	
		X	65KSI Fy	BOLT/NUT OR TAPPING SCREW	1/4	8/END	1.000	0.500	0.125	
MULLION ANGLE MOUNT FASTENER, HEIGHT <=144										
X			2KSI	SCOTS TAPCON / TAPCON	1/4	32/ANG.	2.000	1.500	1.750	3.375
X			4KSI	SCOTS TAPCON / TAPCON	1/4	27/ANG.	2.000	1.500	1.750	3.375
	X		1.5KSI	SCOTS TAPCON / TAPCON	1/4	32/ANG.	2.000	1.500	1.750	3.375
		X	65KSI Fy	BOLT/NUT OR TAPPING SCREW	1/4	16/ANG.	1.000	0.500	0.125	3.000
		X	65KSI Fy	BOLT/NUT OR TAPPING SCREW	1/4	11/ANG.	1.000	0.500	0.188	3.000
		X	65KSI Fy	BOLT/NUT OR TAPPING SCREW	1/4	16/ANG.	1.000	0.500	0.188	3.766
MULLION END PLATE FASTENER, HEIGHT <=96										
X			2KSI	SCOTS TAPCON / TAPCON	1/4	6/CAP	2.000	1.500	1.750	
X			4KSI	SCOTS TAPCON / TAPCON	1/4	6/CAP	2.000	1.500	1.750	
		X	65KSI Fy	BOLT/NUT OR TAPPING SCREW	1/4	3/CAP	1.000	0.500	0.125	
MULLION ANGLE MOUNT FASTENER, HEIGHT <=96										
X			2KSI	SCOTS TAPCON / TAPCON	1/4	11/ANG.	2.000	1.500	1.750	3.375
X			4KSI	SCOTS TAPCON / TAPCON	1/4	9/ANG.	2.000	1.500	1.750	3.375
	X		1.5KSI	SCOTS TAPCON / TAPCON	1/4	11/ANG.	2.000	1.500	1.750	3.375
		X	65KSI Fy	BOLT/NUT OR TAPPING SCREW	1/4	7/ANG.	1.000	0.500	0.125	3.766
		X	65KSI Fy	BOLT/NUT OR TAPPING SCREW	1/4	6/ANG.	1.000	0.500	0.125	3.000

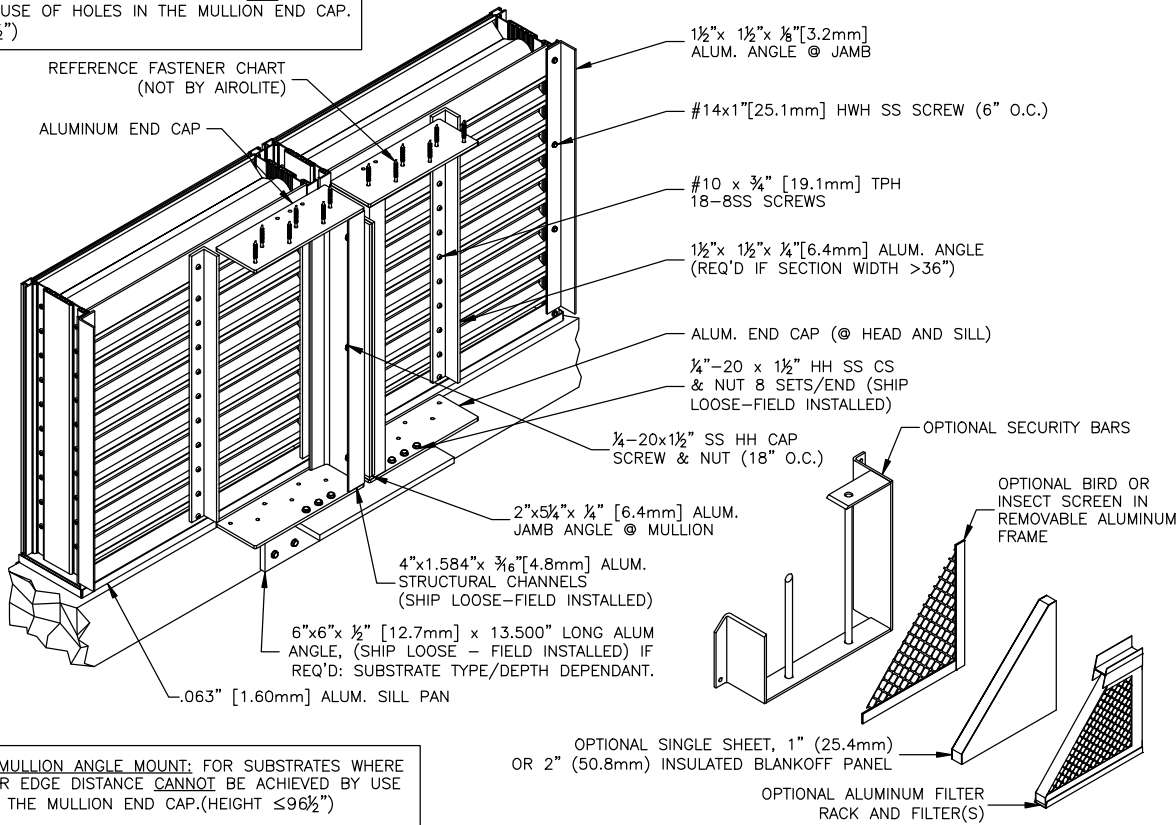


**Multiple Sections**

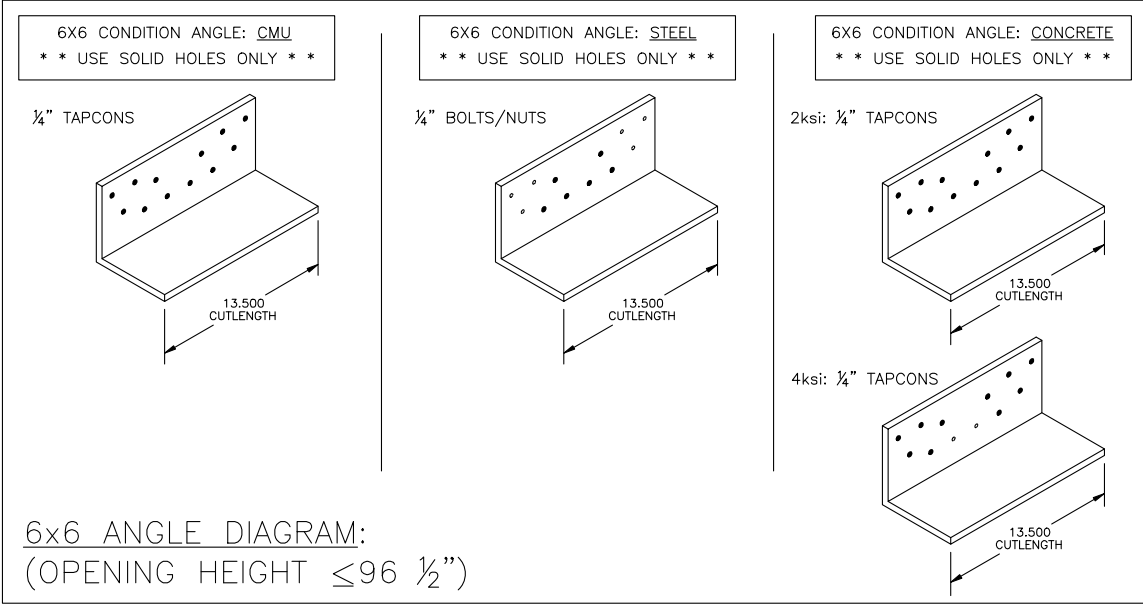
Height ≤ 96 1/2"

Structure Depth		
<u>CMU Substrate</u>	<u>Concrete Substrate</u>	<u>Steel Stud / Structural Steel Substrate</u>
<ul style="list-style-type: none"> <li>• Min. structure depth 6.866 in.</li> <li>• Max. structure depth 12.275 in.</li> </ul>	<ul style="list-style-type: none"> <li>• Min. structure depth 6.866 in.</li> <li>• Max. structure depth infinite</li> </ul>	<ul style="list-style-type: none"> <li>• Min. structure depth 5.866 in.</li> <li>• Max. structure depth infinite</li> </ul>

HEAD DETAIL: MULLION DIRECT MOUNT: FOR SUBSTRATES WHERE MINIMUM FASTENER EDGE DISTANCE CAN BE ACHIEVED BY USE OF HOLES IN THE MULLION END CAP. (HEIGHT ≤ 96 1/2")



SILL DETAIL: MULLION ANGLE MOUNT: FOR SUBSTRATES WHERE MIN. FASTENER EDGE DISTANCE CANNOT BE ACHIEVED BY USE OF HOLES IN THE MULLION END CAP. (HEIGHT ≤ 96 1/2")



## Multiple Sections

Height > 96 1/2" ≤ 144 1/2"

### Structure Depth

#### CMU Substrate

- Min. structure depth 6.866 in.
- Max. structure depth 15.000 in.

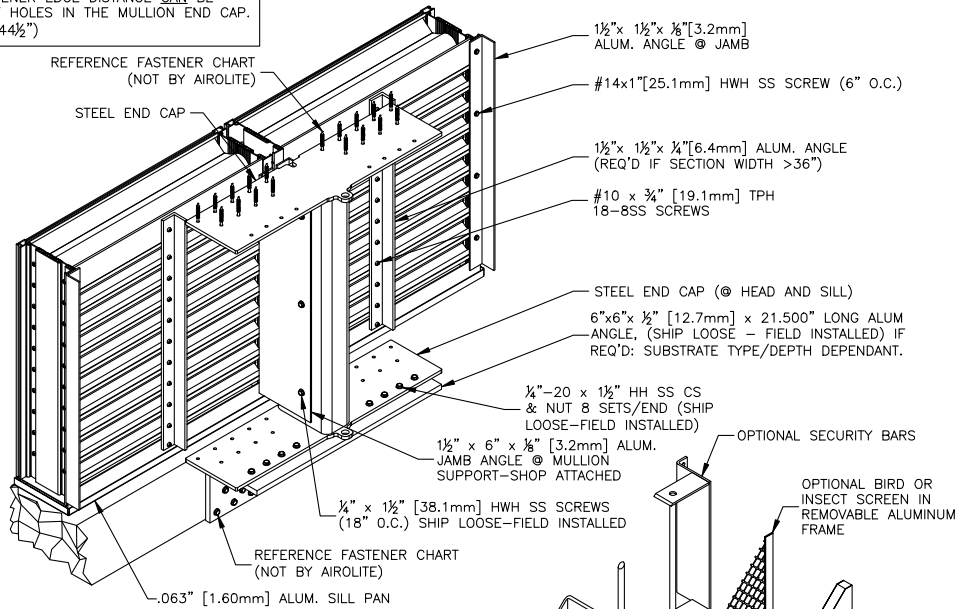
#### Concrete Substrate

- Min. structure depth 6.866 in.
- Max. structure depth infinite

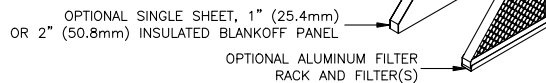
#### Steel Stud / Structural Steel Substrate

- Min. structure depth 5.866 in.
- Max. structure depth infinite

HEAD DETAIL: MULLION DIRECT MOUNT; FOR SUBSTRATES WHERE MINIMUM FASTENER EDGE DISTANCE CAN BE ACHIEVED BY USE OF HOLES IN THE MULLION END CAP. (HEIGHT >96 1/2" & ≤144 1/2")

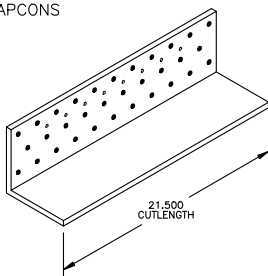


SILL DETAIL: MULLION ANGLE MOUNT; FOR SUBSTRATES WHERE MIN. FASTENER EDGE DISTANCE CANNOT BE ACHIEVED BY USE OF HOLES IN THE MULLION END CAP. (HT >96 1/2" & ≤144 1/2")



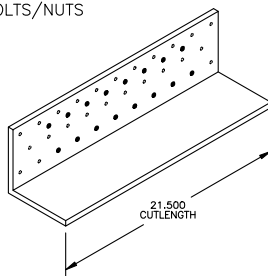
6X6 CONDITION ANGLE: CMU  
 \*\* USE SOLID HOLES ONLY \*\*

1/4" TAPCONS



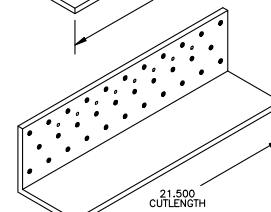
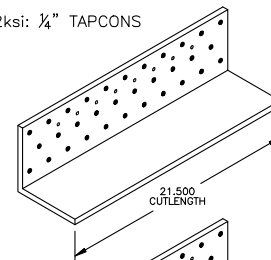
6X6 CONDITION ANGLE: STEEL  
 \*\* USE SOLID HOLES ONLY \*\*

1/4" BOLTS/NUTS



6X6 CONDITION ANGLE: CONCRETE  
 \*\* USE SOLID HOLES ONLY \*\*

2ksi: 1/4" TAPCONS



4ksi: 1/4" TAPCONS  
 (ANY 9 IN ROWS 1,2,&4)

6x6 ANGLE DIAGRAM:

(OPENING HEIGHT >96 1/2" & ≤144 1/2")



P.O. Box 410, 525 Western Road, Schofield, WI 54476-0410 USA  
 715.841.8757 • fax 715.841.8773 • www.airolite.com

As a result of our commitment to continuous improvement, Airlite reserves the right to change specifications without notice.