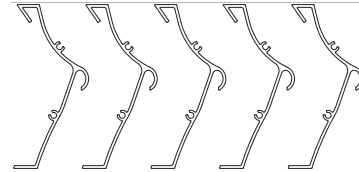


## ARCHITECTURAL LOUVER SCREEN

<b>Louver Screen</b> .....	CV605
<b>Material</b> .....	Extruded Aluminum (Alloy 6105-T5)
<b>Stationary Blade</b> .....	0.081 in. (2.06 mm)
<b>Horizontal Support</b> .....	2 x 2 x 1/4 in. Angle
<b>Louver Screen Depth</b> .....	5 in. (127.0 mm)
<b>Free Area – 4 ft. x 4 ft. Unit</b> .....	.82 sq. ft. (0.82 sq m)
<b>Percent Free Area</b> .....	55%



## RECOMMENDED SPECIFICATION

**Airolite Louver Screen Type CV605** is a 5-inch deep, extruded aluminum, vertical blade louver screen. The sightproof blade configuration is ideal to use to conceal mechanical equipment at the penthouse level or at grade when security and resistance to intrusion are primary concerns. The complimentary blade profiles are 100% sightproof when viewed from any orientation and pose a formidable barrier to intruding devices such as sticks and wires. All materials are available in Airolite's broad array of baked enamel, fluoropolymer, and clear or color anodize coatings for durability and compatibility with adjacent materials. Please contact your local Airolite representative or the factory for assistance with the layout and design of support systems when required.

### GENERAL

Where indicated on plan drawings or described in schedules, furnish and install Louver Screen Type CV605 as designed and manufactured by The Airolite Company LLC, Schofield, Wisconsin. Louver screens shall be furnished in the configuration represented on the plan drawings and shall include installation hardware and finishes as specified and required for a complete installation.

### SUBMITTALS

Manufacturer shall submit shop drawings incorporating key plans, elevations, sections and details showing profiles, angles and spacing of louver screen blades and frames; unit dimensions related to wall openings and construction; and, anchorage details and locations. Submit theoretical calculations prepared by a professional engineer specializing in the application of welding technology demonstrating that each fillet weld joining blade and frame members will withstand a minimum of 526 pounds of force in shear. Provide samples of manufacturer's finish and color charts showing the full range of colors available.

### PRODUCTS

Louver screens shall be vertical blade, sightproof, Louver Screen Type CV605 with concealed vertical mullions. Louver screens shall be 5-inches (127.0 mm) deep and assembled entirely from extruded aluminum components. Blades shall be 0.081-inch (2.06 mm) thick extruded aluminum, alloy 6105-T5. Blades shall be vertical, V-type with a center hook and spaced 2-inches (50.8 mm) on center. Standard construction of louver screen is shipment in pre-assembled panels. If knockdown construction is needed, contact factory for availability and pricing.

### WELDED ASSEMBLY

Join stationary blade, head, sill and jamb frames with fillet welds concealed from view, unless the size of the louver makes screwed connections between louver sections necessary. Louver blades shall be joined to each jamb frame with fillet welds produced with the Pulsed Gas Metal Arc Welding (GMAW/Mig) process.

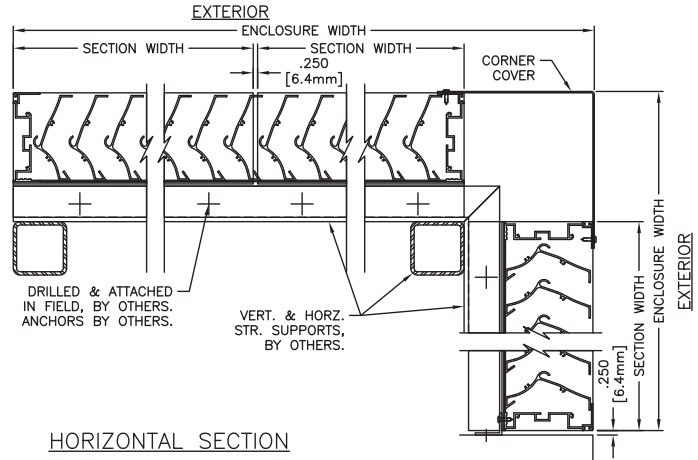
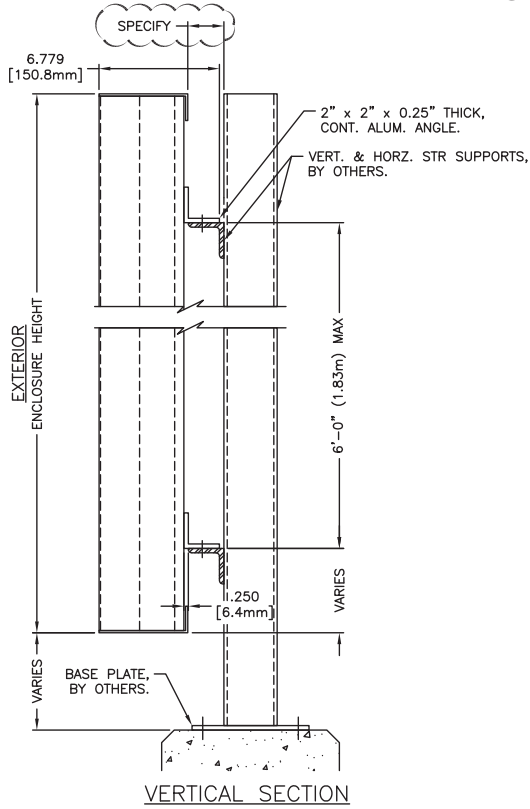
### STRUCTURAL DESIGN CRITERIA

Manufacturer shall design and furnish all supports required to withstand a wind force of not less than 25 pounds per square foot for panel sizes no larger than 72-inches. Louver screens larger than 72-inches (183 cm) wide x 144-inches (366 cm) high or 144-inches (366 cm) wide x 72-inches (183 cm) high will be fabricated and installed in multiples sections. Louver screen blades, horizontal members and anchorages shall be demonstrated to withstand the specified wind design load.

*See page 2 for complete finish options*

# LOUVER SCREEN TYPE CV605 DETAILS & FINISH OPTIONS

APPROVER NOTE:  
APPROVER TO INDICATE SIZES & SPACING  
OF ALL VERTICAL & HORIZONTAL SUPPORTS.



## FINISHES

Finish Type	Description/Application	Color Selection	Standard Warranty (Aluminum)
<b>AAMA 2605</b> 100% Fluoropolymer (FEVE) 2-Coat 70% Kynar® (PVDF) 3-Coat 70% Kynar® (PVDF) 4-Coat 70% Kynar® (PVDF)	"Best." The premier finish for extruded aluminum. Tough, long-lasting coating has superior color retention and abrasive properties. Resists chalking, fading, chemical abrasion and weathering.	<b>Standard Colors:</b> Any of the 27 standard colors shown can be furnished in 70% or 50% Kynar®, 100% Fluoropolymer or Baked Enamel. <b>Mica Colors:</b> Airlite offers 6 standard Mica colors for 70% Kynar® or 100% Fluoropolymer. <b>Custom Colors:</b> Custom color matching is available. Consult your Airlite representative for cost and/or lead-time implications if a custom color is required.	10 Years (20 Years Optional)
<b>AAMA 2603</b> Baked Enamel	"Good." Provides good adhesion and resistance to weathering, corrosion and chemical stain.		1 Year
<b>AA-M10C22A42</b> Integral Color Anodize	"Two-step" anodizing is produced by following the normal anodizing step with a second, colorfast process.	Light, Medium, Dark or Extra Dark Bronze; Champagne; Black	5 years
<b>AA-M10C22A41</b> Clear Anodize 215 R-1	Clear, colorless and hard oxide aluminum coating that resists weathering and chemical attack.	Clear	5 years
<b>AA-M10C22A31</b> Clear Anodize 204	Clear, colorless and hard oxide aluminum coating that resists weathering and chemical attack.	Clear	1 Year
<b>Prime Coat</b>	Louvers or architectural products shall be cleaned, pre-treated and receive a prime coat finish suitable for field painting. Airlite does not recommend prime coat or field painting of materials.		n/a
<b>Mill</b>	Materials may be supplied in natural aluminum or galvanized steel finish when normal weathering is acceptable and there is no concern for color or color change.		n/a

Finishes meet or exceed AAMA 2605, AAMA 2604, and AAMA 2603 requirements. Please consult [www.airlite.com](http://www.airlite.com) for complete information on standard and extended paint warranties. Paint finish warranties are not applicable to steel products.



P.O. Box 410, 525 Western Road, Schofield, WI 54476-0410 USA  
 715.841.8757 • fax 715.841.8773 • [www.airlite.com](http://www.airlite.com)

Submittal CV605, February 2020  
 Copyright ©2020 The Airlite Company, LLC

The Airlite Company, LLC reserves the right to make product changes.