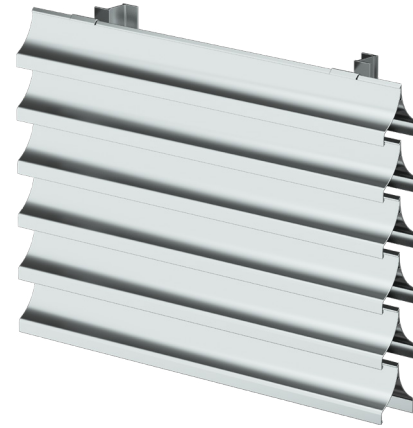


# SCB601

Equipment Screen | Extruded Aluminum

## Standard Construction

<b>Material</b>	Extruded 6063-T5 aluminum
<b>Stationary Blade</b>	0.081 in. (2.06 mm)
<b>Vertical Support</b>	Extruded aluminum Z support
<b>Louver Screen Depth</b>	4 in. (101.6 mm)
<b>Free area - 4 ft. x 4 ft.</b>	5.65 sq. ft. (0.52 sq m)
<b>Percent Free Area</b>	35%



Airolite equipment screen SCB601 is a sightproof horizontal blade equipment screen that functions well as a sight and security barrier. The equipment screen is 100% sightproof when viewed from any orientation.

## Standard Details

[SCB601 Standard Details](#)

## Document Links

[Grilles & Screens](#)

[Finishes & Colors](#)

[Airolite Warranty Statement](#)

