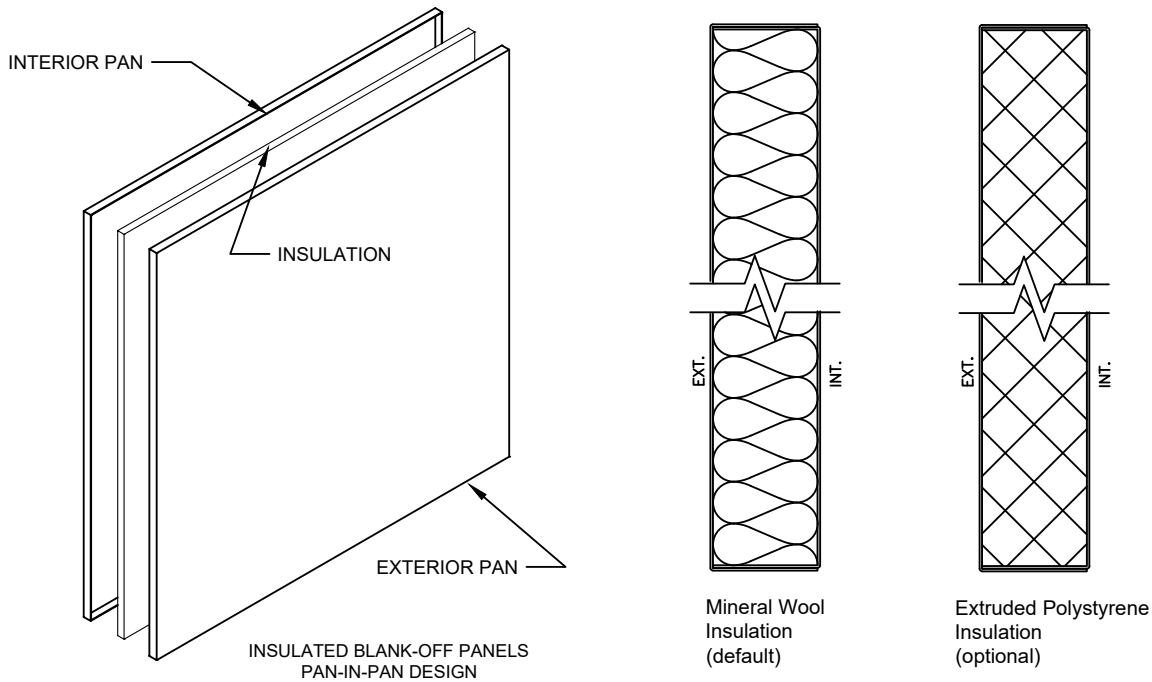


BLANK-OFF PANELS



Blank Off Panel Thickness and Finish:

- **Non-Insulating blank off panels with a 0.050", 0.063", or 0.125" aluminum skin**
 - Black Kynar ext./mill int. with 0.050" skin - Finished to match ext./mill int. with 0.063" or 0.125" skin
- **1" Insulating blank off panels with 0.032", 0.063", or 0.125" aluminum skin**
 - Black Kynar ext./mill int. with 0.032" skins - Finished to match ext./mill int. with 0.063" or 0.125" skins
- **2" Insulating blank off panels with 0.032", 0.063", or 0.125" aluminum skin**
 - Black Kynar ext./mill int. with 0.032" skins - Finished to match ext./mill int. with 0.063" or 0.125" skins

Attachment Type:

- **Mechanically fastened blank off panels: (default)**
 - Blank off panels are not sealed, but fastened to the interior face of the louver(s)
- **Sealed and mechanically fastened blank off panels: (optional)**
 - Blank off panels are silicone wet sealed and fastened to the interior face of the louver(s)

Blank Off Panel Construction:

- Blank off panel construction is single sheet. Gasket materials, edge treatments, and sealed edges are excluded.
- Insulated blank off panel construction is pan-in-pan. Gasket materials, edge treatments, and sealed edges are excluded.

Blank Off Panel Insulation:

- **Mineral Wool: (default)**
 - Semi-rigid, non-combustible, mineral wool thermal insulation board; will comply with ASTM C612, Min. R-value of 4.2 per 1 in. of thickness @ 75 degree F mean temperature, Min. Density of 4.4 lbs./cu.ft.
 - MEA Approval - New York City (331-97-M) and Los Angeles (RR 25444) approved for compliance and performance.
- **Extruded Polystyrene: (optional)**
 - Rigid cellular thermal insulation will comply with ASTM C578, Min. R-value of 5.0 per 1 in. of thickness @ 75 degree F mean temperature, Min. Density of 1.5 lbs./cu.ft.

AS A RESULT OF OUR COMMITMENT TO CONTINUOUS IMPROVEMENT,
THIS SUPPLIER RESERVES THE RIGHT TO CHANGE SPECIFICATIONS WITHOUT NOTICE

AIROLITE[®]
The look that works.[™]