

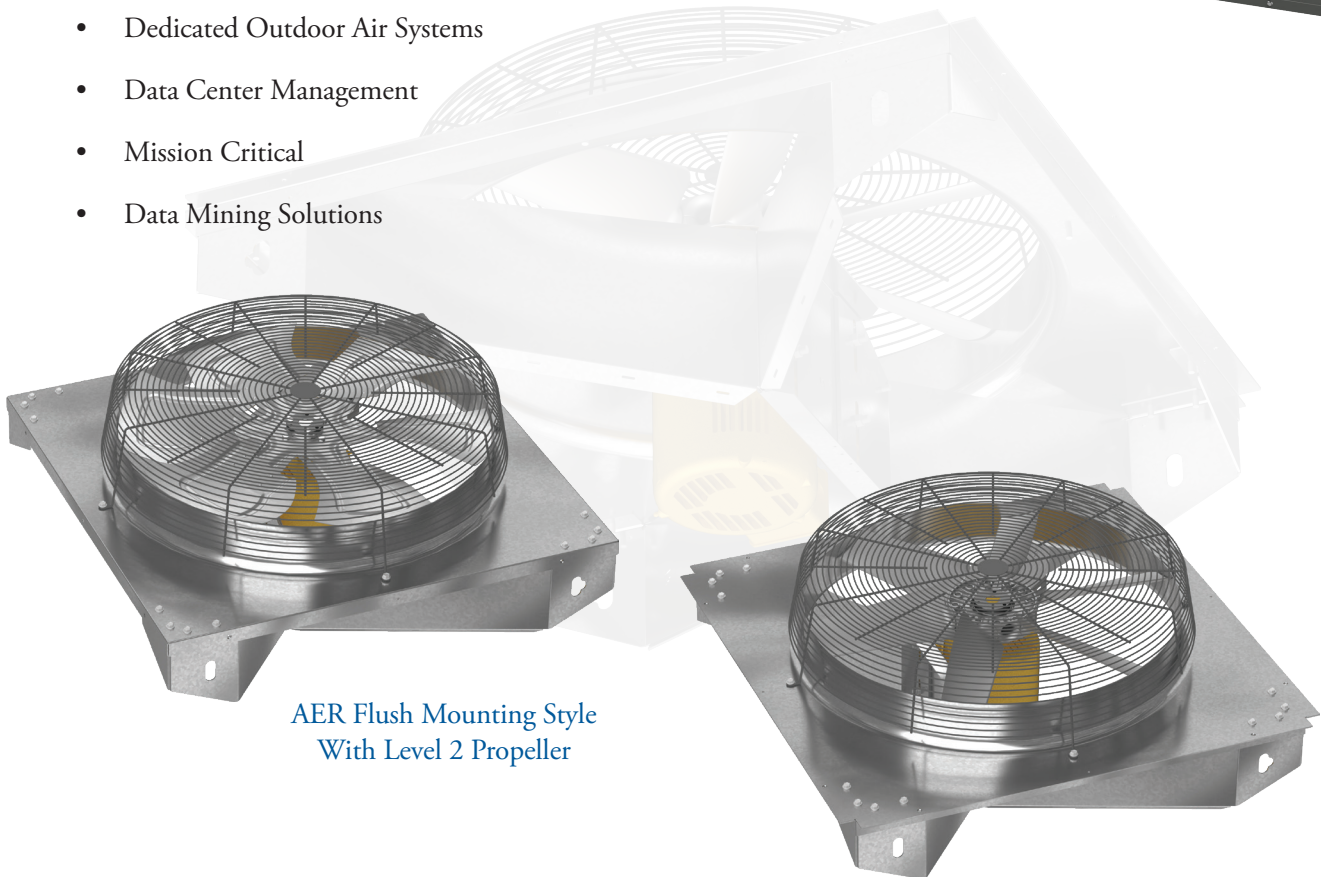
AER (Sizes 20 – 36)

Direct Drive Configurable Condenser Fans

Greenheck's class-leading efficient, reliable, and configurable AER now has condenser fan options to serve applications where elevated water and temperature protection is required.

Keep air moving with the AER to help regulate temperature and provide proper ventilation for your equipment, even in the most demanding applications including:

- Tempered Air Systems
- Dedicated Outdoor Air Systems
- Data Center Management
- Mission Critical
- Data Mining Solutions



AER Flush Mounting Style
With Level 2 Propeller

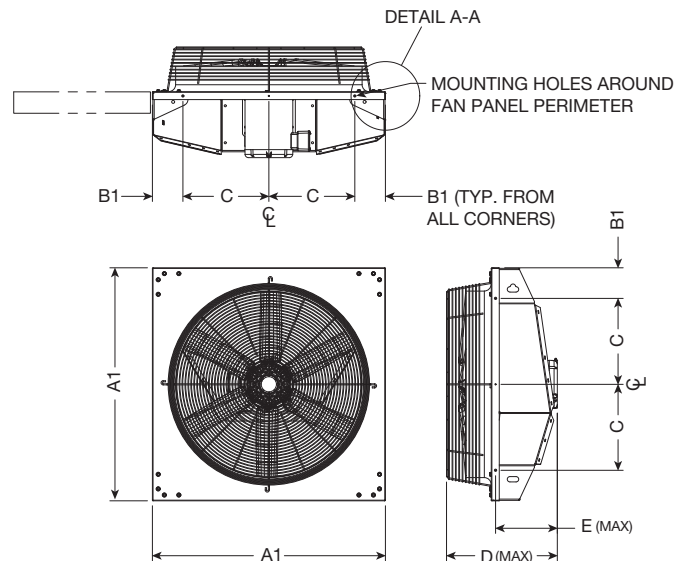
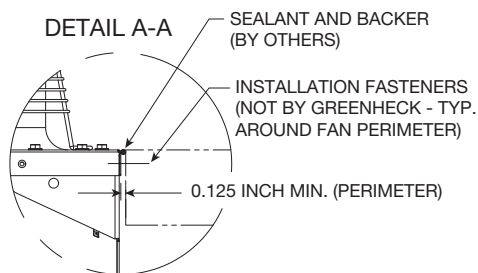
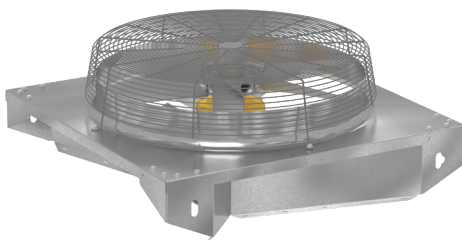
AER Surface Mounting Style
With Level 3 Propeller

Configurable Condenser Fans

AER Flush Mounting Style Dimensions

Size	A1	B1	C	D Max.	E Max.	Max. Weight
20	26.032	4.000	9.016	22.977	16.500	143
24	32.104	4.000	12.052	26.134	18.500	206
30	38.104	5.000	14.052	25.891	18.250	218
36	44.104	5.000	17.052	29.196	18.125	324

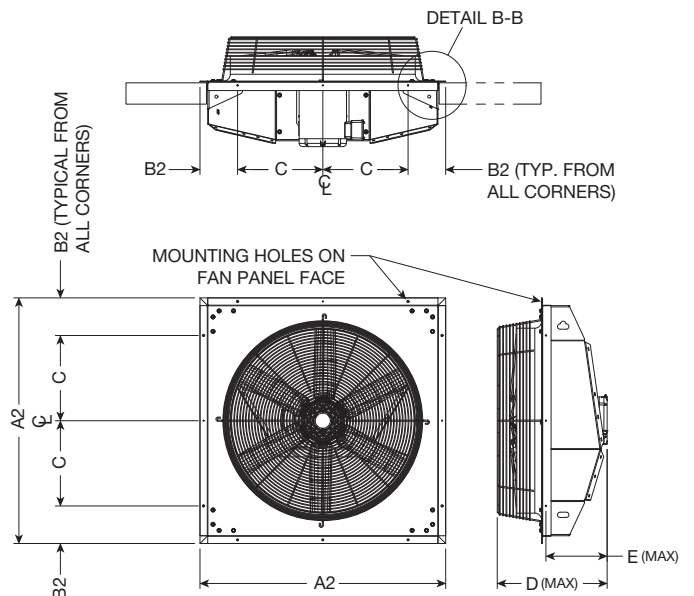
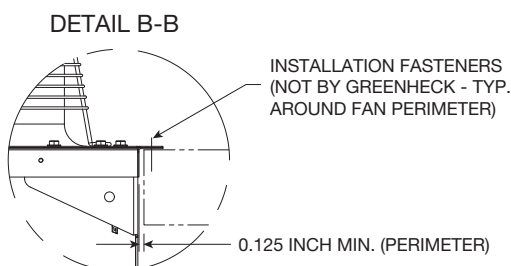
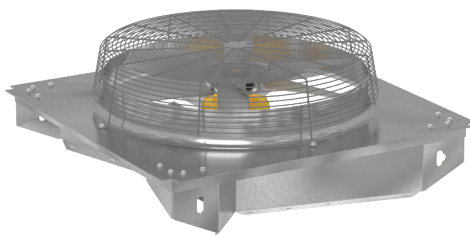
Dimensions in inches, weight in pounds.



AER Surface Mounting Style Dimensions

Size	A2	B2	C	D Max.	E Max.	Max. Weight
20	27.928	4.948	9.016	22.977	16.500	143
24	34.500	5.198	12.052	26.134	18.500	206
30	40.500	6.198	14.052	25.891	18.250	218
36	48.000	6.948	17.052	29.196	18.125	324

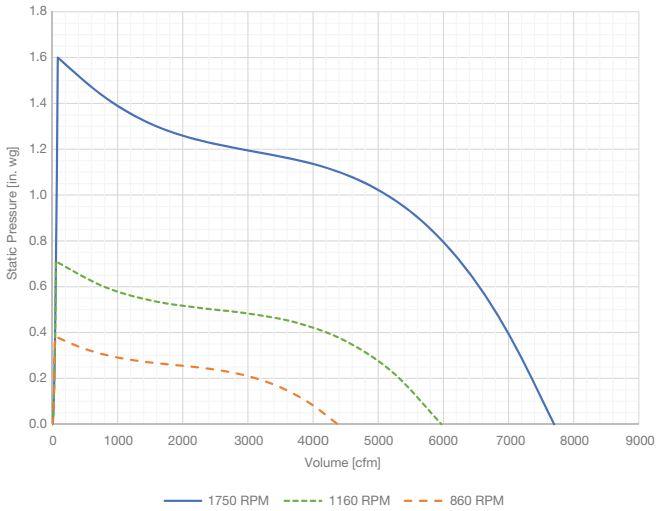
Dimensions in inches, weight in pounds.



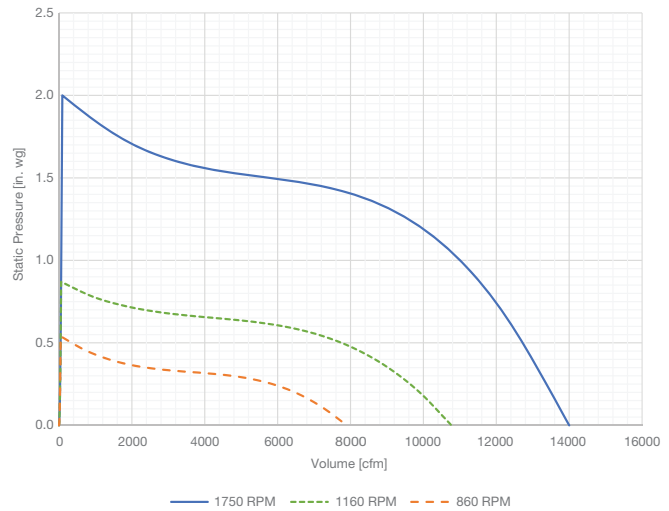
AER Performance

Size	Max. HP	Max. Fan RPM	Max. CFM	Max. Static Pressure (in. wg)
20	2	1750	7,700	1.60
24	5	1750	14,000	2.00
30	5	1750	19,800	2.10
36	7.5	1750	27,700	2.90

AER-20 Coverage Area



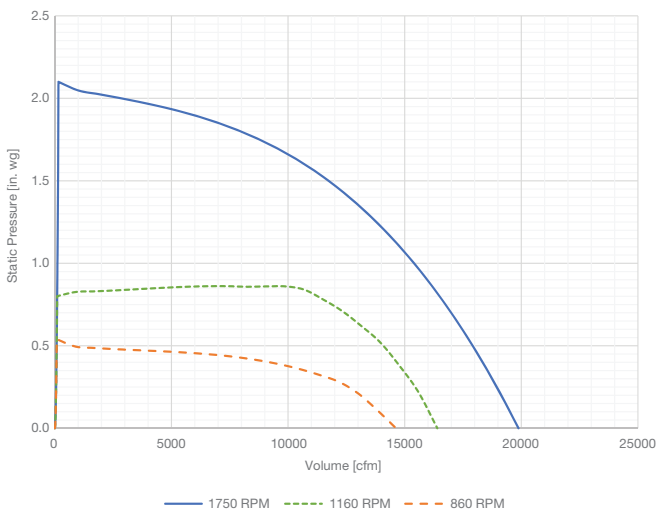
AER-24 Coverage Area



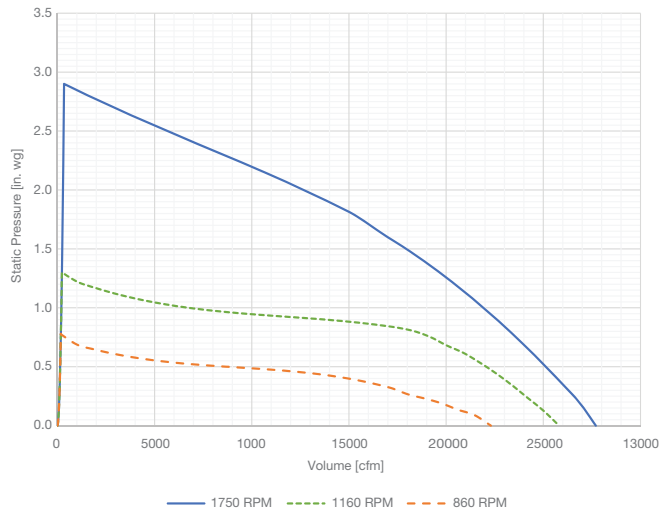
Curves represent a maximum coverage area of multiple prop configurations up to speeds [rpm] listed
Configurations include 3, 6, and 12 blades with all available pitch configurations
Represents data at standard air (70°F, 0 ft)

Curves represent a maximum coverage area of multiple prop configurations up to speeds [rpm] listed
Configurations include 3, 6, and 12 blades with all available pitch configurations
Represents data at standard air (70°F, 0 ft)

AER-30 Coverage Area



AER-36 Coverage Area

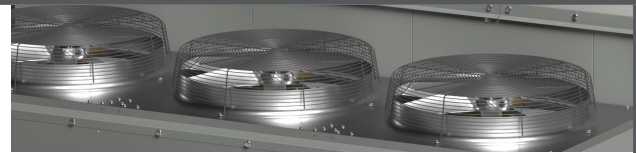


Curves represent a maximum coverage area of multiple prop configurations up to speeds [rpm] listed
Configurations include 3, 6, and 12 blades with all available pitch configurations
Represents data at standard air (70°F, 0 ft)

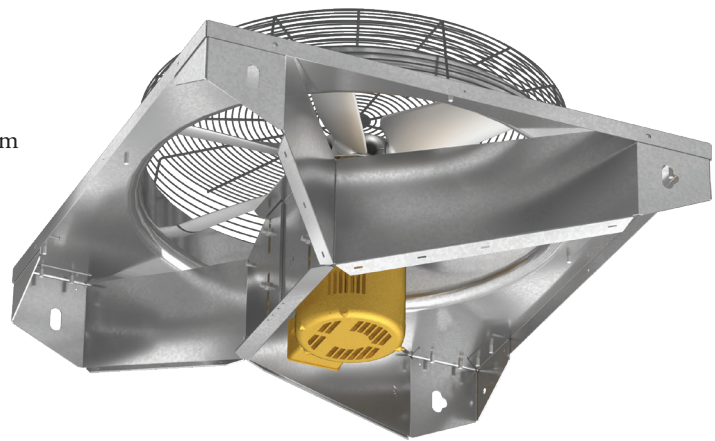
Curves represent a maximum coverage area of multiple prop configurations up to speeds [rpm] listed
Configurations include 3, 6, and 9 blades with all available pitch configurations
Represents data at standard air (70°F, 0 ft)

Construction Features

- Galvanized steel fan panel and frame
- Painted and zinc coated steel wire guard (propeller side)
- Propellers:
 - Level 2 – Shall be constructed with die formed galvanized steel blades and propeller hub. A standard square key and set screw or tapered bushing locking the propeller to the motor shaft.
 - Level 3 – Shall be constructed with cast aluminum blades and hubs. A standard square key and set screw or a tapered bushing locking the propeller to the motor shaft.
- 1 year standard warranty length

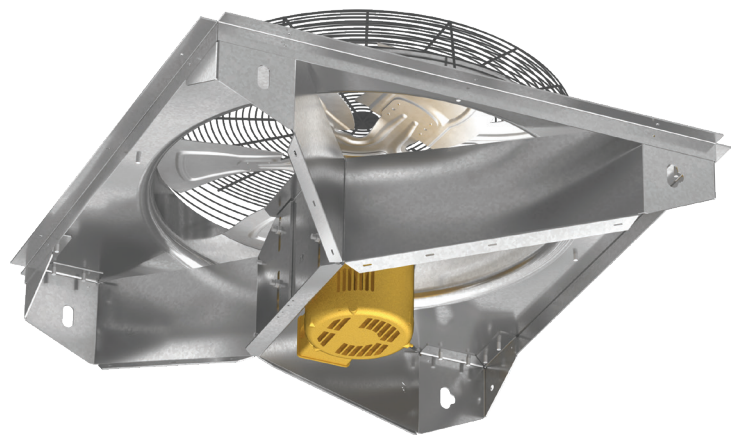


AER Flush Mounting Style
With Level 3 Propeller



Motor Information

- Standard NEMA motor frame sizes
- TEFC motor enclosure
- Up to IP55 water and dust motor rating
- Up to 60c ambient airstream temperature rating
- 208/230, 460V (1 or 3 phase)
IP55/60c motor rating is limited to 460V/3 phase
- Optional electronically commutated (EC) motors



AER Surface Mounting Style
With Level 2 Propeller

For more information regarding Greenheck AER configurable condenser fans consult your local Greenheck sales representative.

