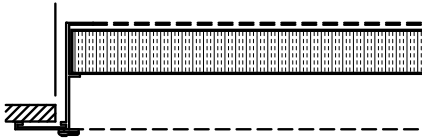


# FILTER GRILLES Selection Guide

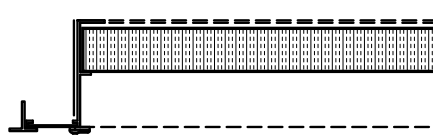
Greenheck Model	Material		Filter			Frame Style					Module Size Available (for Lay-in)				
	Steel	Aluminum	1" Standard	2" Optional	4" Optional	Surface Mount (-1)	Surface Mount - Removable Core (-RC-1)	Lay-In (-6)	Lay-in Removable Core (-RC-6)	Donn Finline / Bolt Slot (-9)	12x12	24x12	24x24	48x24	48x48
<b>Cube Core</b>															
<a href="#">XG-CC5F</a>		X	X	X		X	X	X	X	X	X	X	X	X	X
<a href="#">XG-CC45F</a>		X	X	X		X	X	X	X	X	X	X	X	X	X
<b>Fixed Blade</b>															
<a href="#">XG-RHEF</a>		X	X	X	X	X	X	X	X	X	X	X	X	X	X
<a href="#">XG-RHF</a>		X	X	X	X	X	X	X	X	X	X	X	X	X	
<a href="#">XG-SRHF</a>	X		X	X		X	X	X	X	X	X	X	X	X	
<b>Perf Face</b>															
<a href="#">XG-RPF</a>		X	X	X		X	X	X	X		X	X	X	X	
<a href="#">XG-SRPF</a>	X		X	X							X	X	X	X	
<b>Heavy Duty</b>															
<a href="#">XG-4500F</a>		X	X	X		X									
<a href="#">XG-4500SF</a>	X		X	X		X									
<a href="#">XG-4538F</a>		X	X	X		X									
<a href="#">XG-4538SF</a>	X		X	X		X									

## FRAME STYLE

Surface Mount (-1)



Lay-In (-6)



Donn Finline / Bolt Slot (-9)

