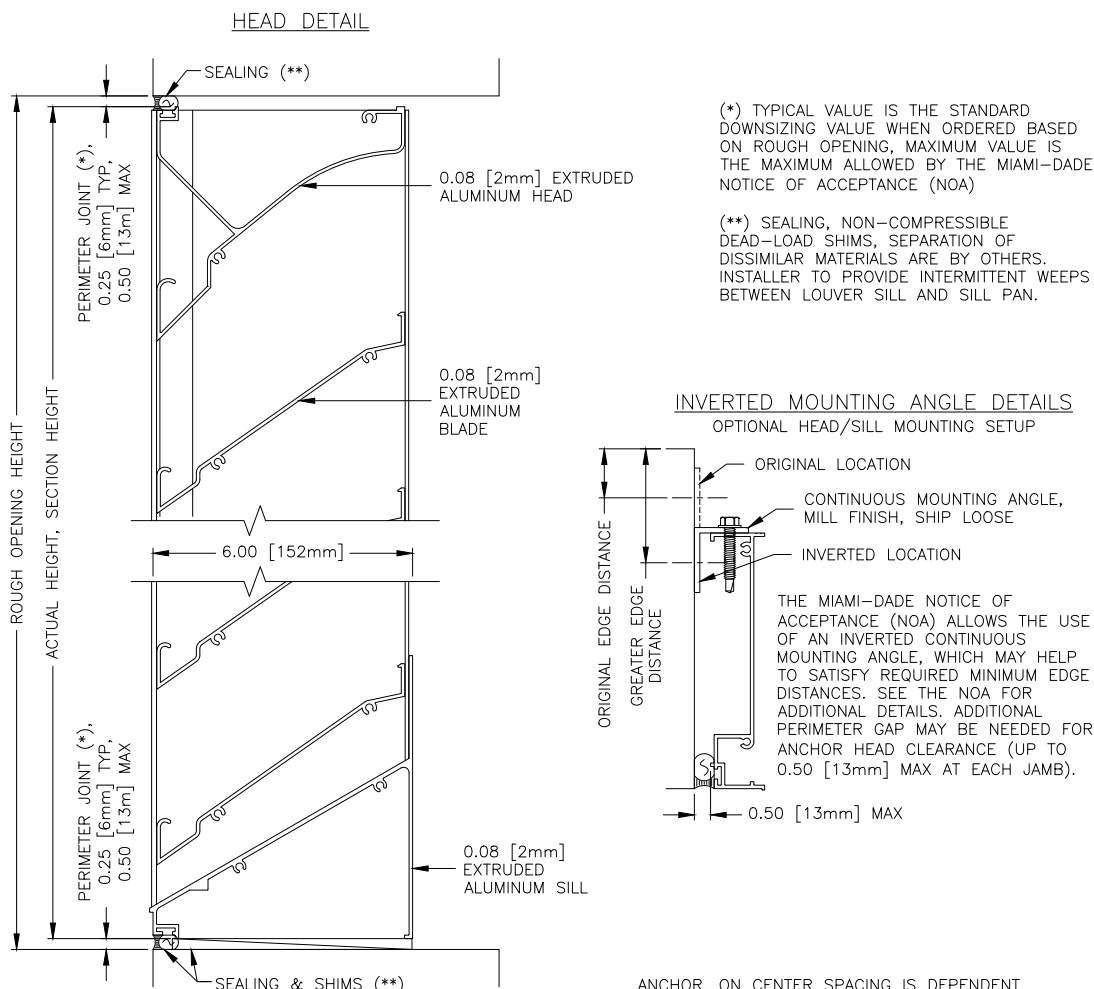


K6746MDE

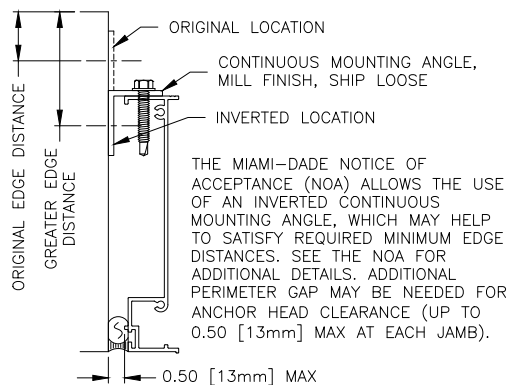
AMCA 540 and 550* Listed Hurricane Louver
Miami-Dade and Florida Product Approved
Extruded Aluminum | Drainable

* AMCA 550 when selected with VCD-40 Damper

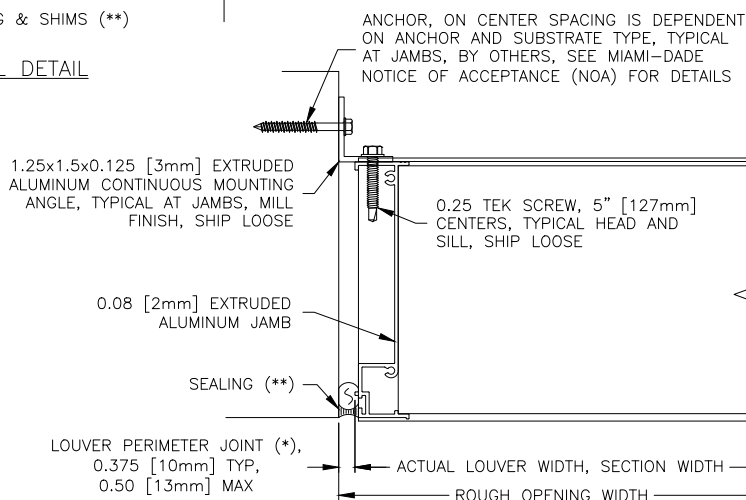
Standard Channel Frame



INVERTED MOUNTING ANGLE DETAILS
OPTIONAL HEAD/SILL MOUNTING SETUP



SILL DETAIL



JAMB DETAIL

