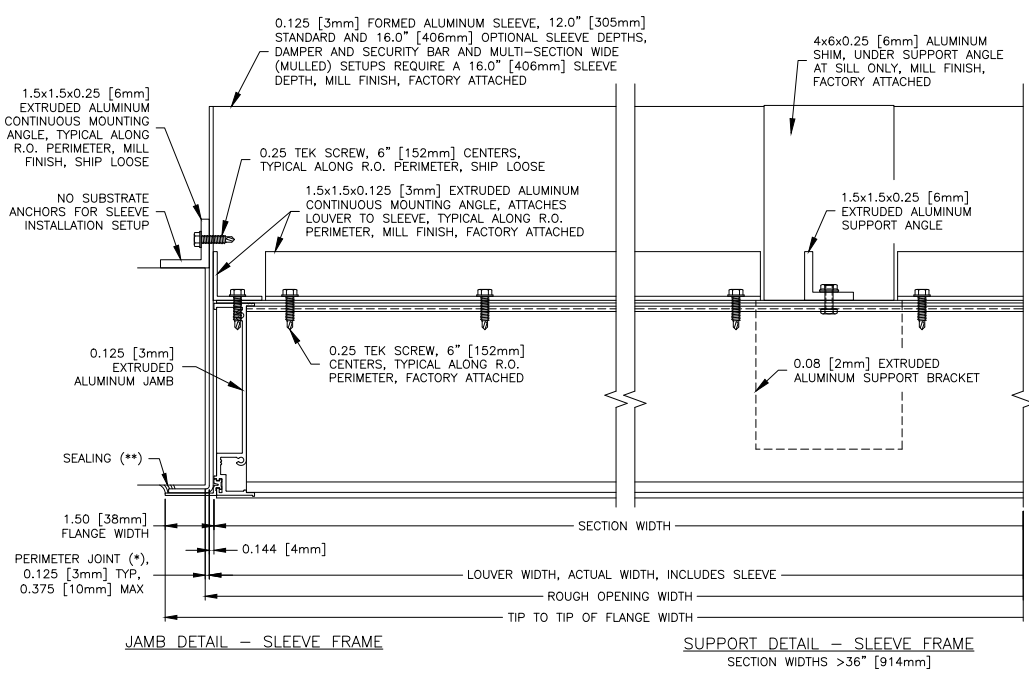
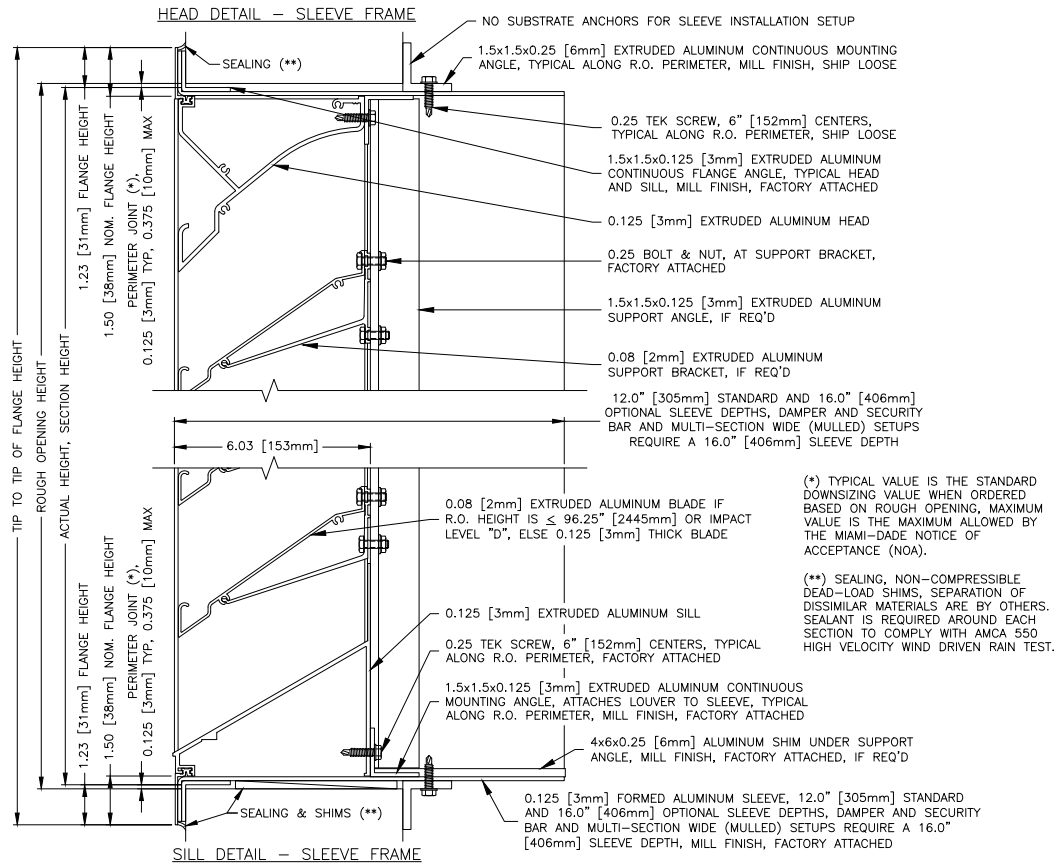


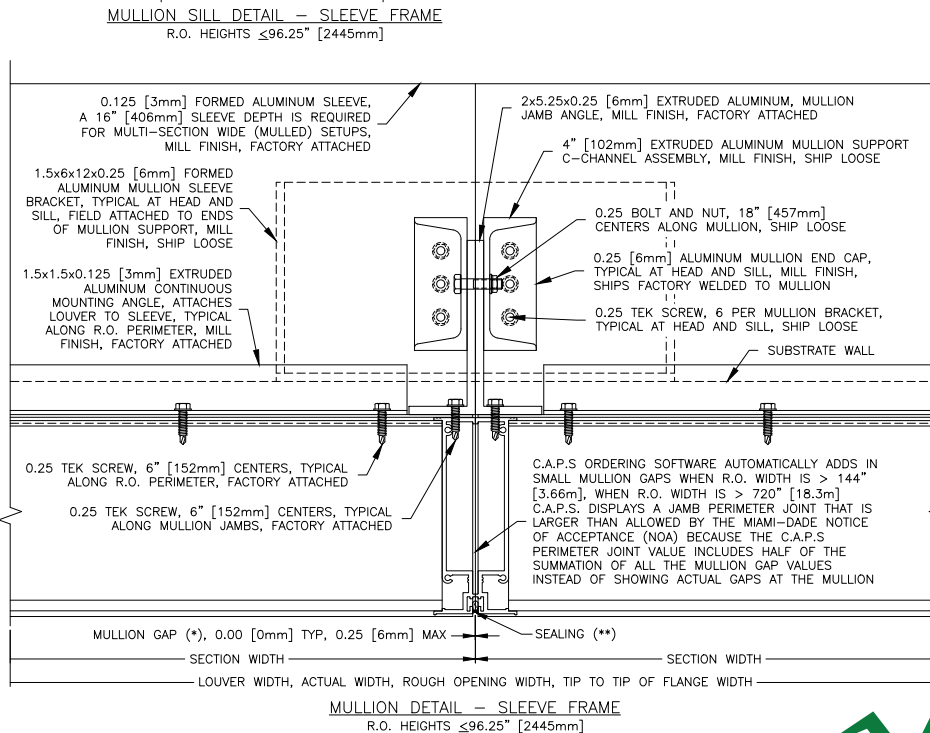
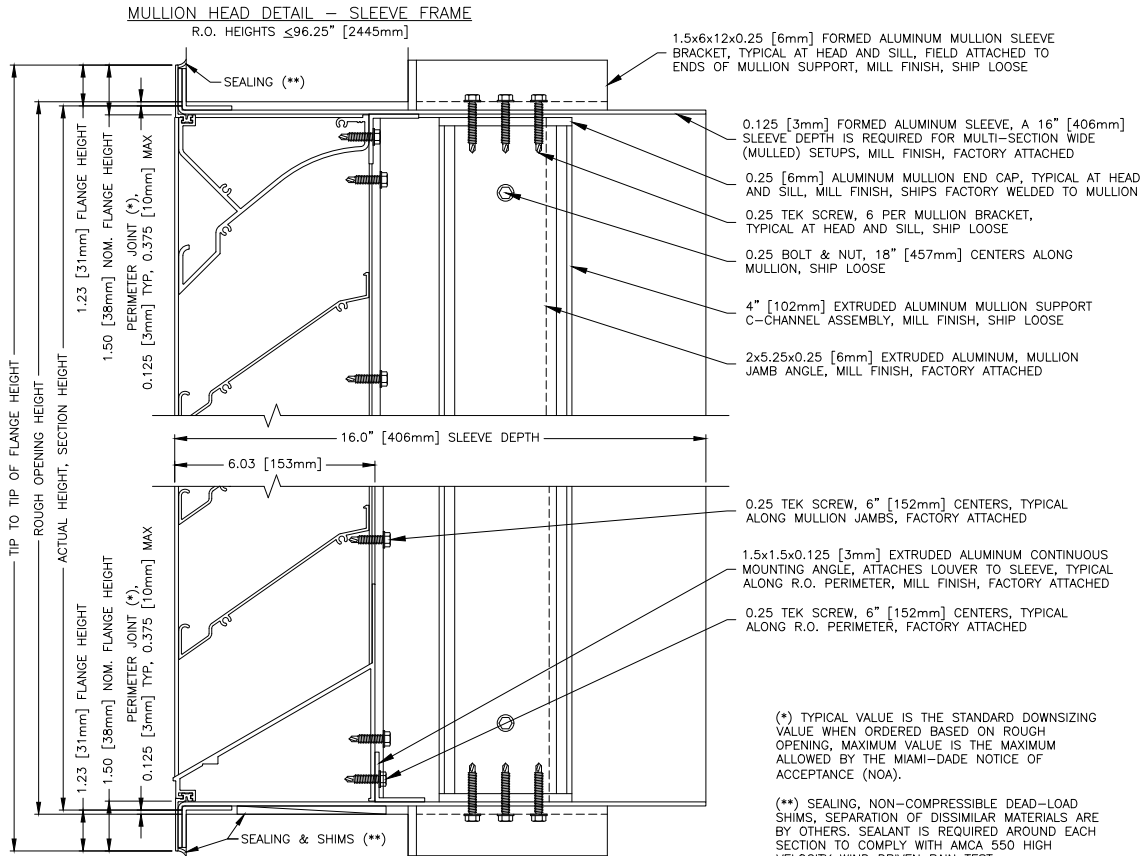
K6746MD

AMCA 540 and 550* Listed Hurricane Louver
Miami-Dade and Florida Product Approved
Extruded Aluminum | Drainable Blade
*AMCA 550 when selected with VCD-40 Damper



K6746MD

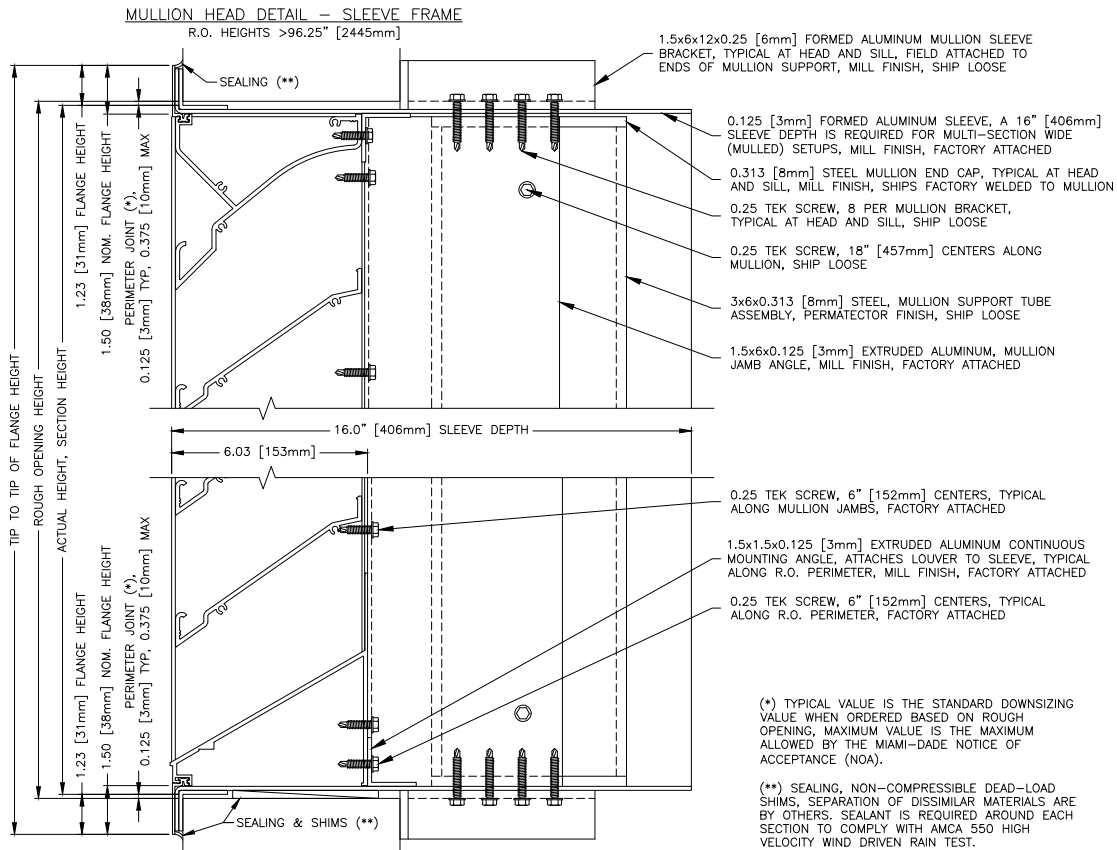
AMCA 540 and 550* Listed Hurricane Louver
Miami-Dade and Florida Product Approved
Extruded Aluminum | Drainable Blade
*AMCA 550 when selected with VCD-40 Damper



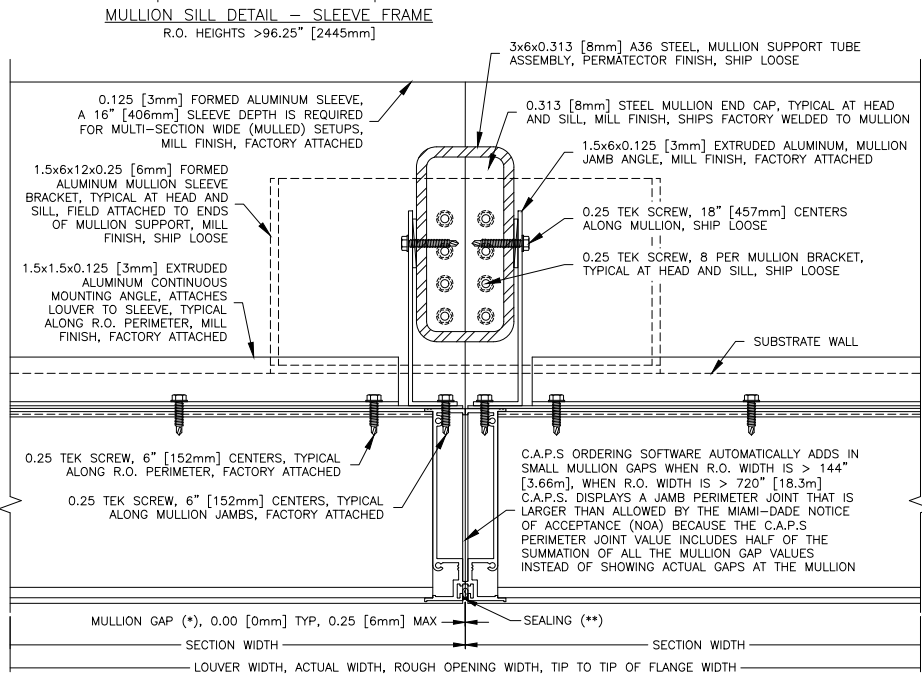
AIROLITE
The look that works.™

K6746MD

AMCA 540 and 550* Listed Hurricane Louver
Miami-Dade and Florida Product Approved
Extruded Aluminum | Drainable Blade
*AMCA 550 when selected with VCD-40 Damper



(*) TYPICAL VALUE IS THE STANDARD DOWNSIZING VALUE WHEN ORDERED BASED ON ROUGH OPENING, MAXIMUM VALUE IS THE MAXIMUM ALLOWED BY THE MIAMI-DADE NOTICE OF ACCEPTANCE (NOA).
 (**) SEALING, NON-COMPRESSIBLE DEAD-LOAD SHIMS, SEPARATION OF DISSIMILAR MATERIALS ARE BY OTHERS. SEALANT IS REQUIRED AROUND EACH SECTION TO COMPLY WITH AMCA 550 HIGH VELOCITY WIND DRIVEN RAIN TEST.



MULLION DETAIL – SLEEVE FRAME
R.O. HEIGHTS >96.25" [2445mm]

