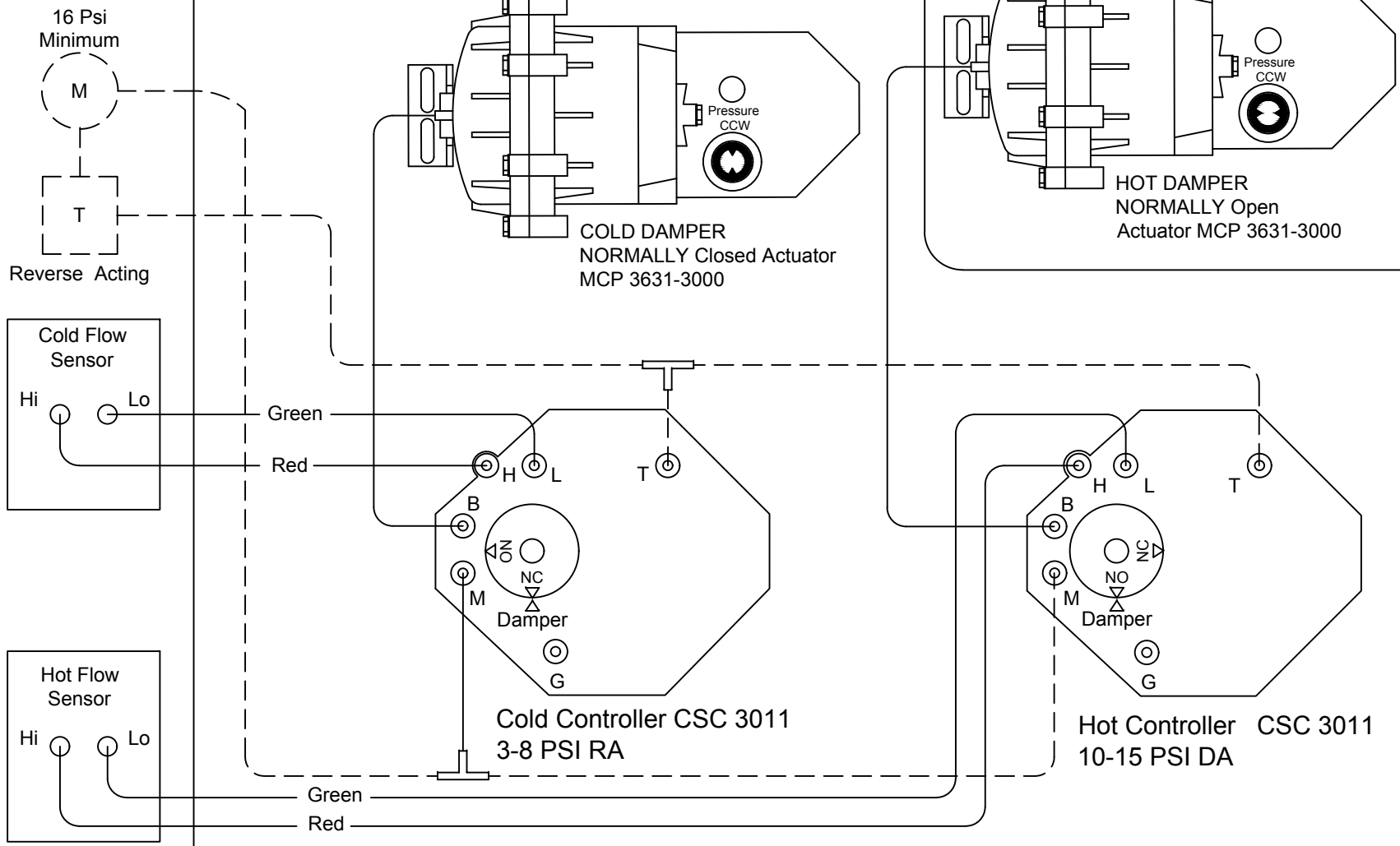


STANDARD COLD DAMPER LOCATION IS RH  
ORDER OPTION 26 FOR LH

STANDARD HOT DAMPER LOCATION IS LH  
ORDER OPTION 26 FOR RH



**DDCD 241M**

(CDS) ATU\CONTROL DIAGRAMS\PNEUMATIC\

# Control Wiring Diagram

Reverse Acting N.C. Cold DA N.O, Hot  
For Use With Mixing And Non Mixing Units

Unless Otherwise Specified:  
 1. Dimensions Are In Inches.  
 2. Tolerances Are:  
 Fractions Decimals Angles  
 $\pm .X = .1$   
 $\pm 1/32 \pm .XX = .02 \pm 1^\circ$   
 $\pm .XXX = .010$

Phone: 715.359.6171  
 Fax: 715.355.2399  
 Parts : 800.355.5354  
 gfcinfo@greenheck.com  
 www.greenheck.com

N/A	F	Removed logo	7/8/21	CG
ECN. No.	Rev	Description	Date	Rev'd By:

DWN. BY	DG	DATE	11/07/05	DWG. NO.		REV.	
CHK'D BY	DG	SCALE	NTS	DDCD 241M		F	