



CANOPY C800H

Airolite offers a lightweight, aesthetic product that is easy to install.

Airolite canopies are factory assembled in individual sections to minimize handling and installation in the field. All canopies are painted and assembled sections to ensure complete and even coverage of components.



FEATURES

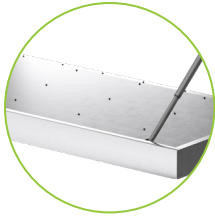
- Pre-engineered
- Ease of Installation
- Fascia Options
- Finish Options
- Preconfigured projections:
24, 36, or 48-inches

APPLICATIONS

- Restaurants
- Retail Buildings
- Shopping Centers
- Storefronts
- Office Buildings
- Parking Garages
- Warehouses

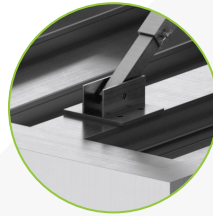
CANOPY TECHNICAL DATA

C800H



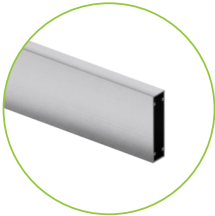
Hood Pans

Infill panels: 0.100 in. extruded aluminum pans sloped away from the building.



Diagonal Tube Support Connection at Section Breaks

Diagonal Tube Supports: 0.125 in. extruded aluminum tubes.



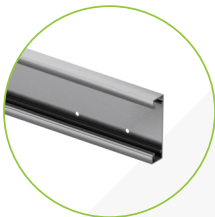
Flat Frame Tube

Frame Tube: 8 in. extrusion with minimum 0.125 in. wall.



Diagonal Tube Support Connection at Building

Diagonal Tube Building Brackets: 0.125 in. extruded aluminum.



Rear Mounting Channel

Rear Mounting Channel: 2 in. x 8 in. extruded aluminum channel with 0.125 in. wall - installation hardware concealed by snap cover.

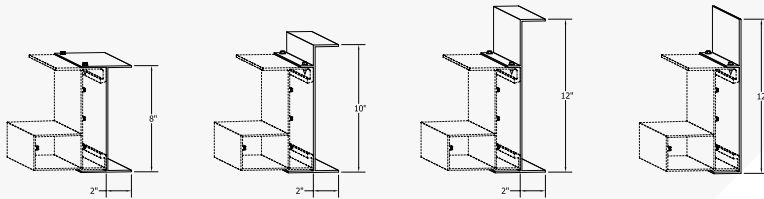


Diagonal Tube Support Adjustability

Diagonal Tube Building Brackets: 0.125 in. extruded aluminum.

FASCIA OPTIONS

DIAGONAL SUPPORT STYLES

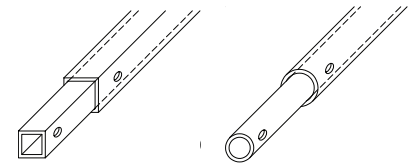


8 IN. CHANNEL

10 IN. CHANNEL

12 IN. CHANNEL

12 IN. FLAT

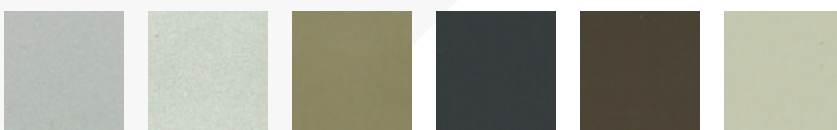


SQUARE

ROUND

POPULAR FINISH COLORS

FINISH OPTIONS



Bright Silver Mica

Clear Anodize

Champagne Anodize

Flat Black

Medium Bronze Anodize

Sandstone

2 or 3-Coat 70% Kynar (PVDF)
50% Kynar / Acroflur
Mill

Visit airolite.com for complete offering of standard colors.