

## Mixed Flow Untempered Make-Up Air & Roof Supply Fans

Model KSQ provides a unique combination of installation flexibility, ease of service, high efficiency, and low sound levels. Fans are compact and ideal for filtered roof-mounted supply or untempered make-up air systems in clean air environments. These fans deliver competitive advantages in a wide range of applications. Washable aluminum filters are provided with the option to add pleated MERV 13 filters.

### SIZES AND CONFIGURATIONS

- Direct drive sizes 7 - 33
- Horizontal or bottom intake and discharge configurations

### PERFORMANCE

- Up to 16,750 cfm
- Up to 2.75 in. wg of static pressure

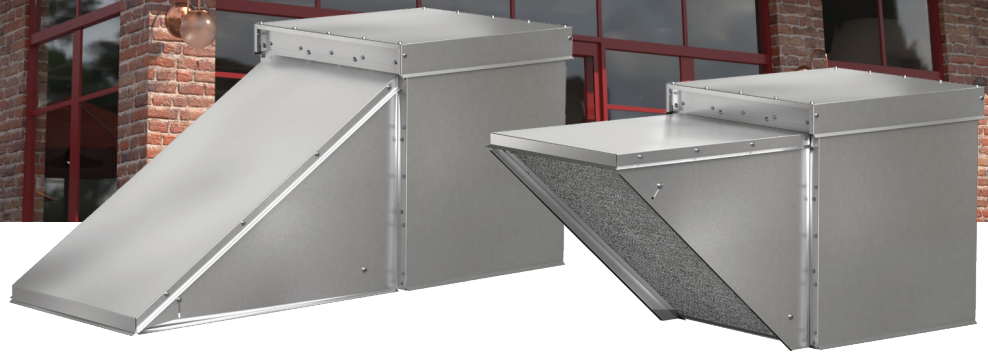


## PRIMARY APPLICATIONS

Filtered Roof Supply | Untempered Make-Up Air  
Kitchen Supply | Clean Air Environments | Outdoor

# KSQ | Mixed Flow

UNTEMPERED ROOF SUPPLY FANS



Roof Curbs

Vari-Green®



Backdraft and Control Dampers



MERV Filters

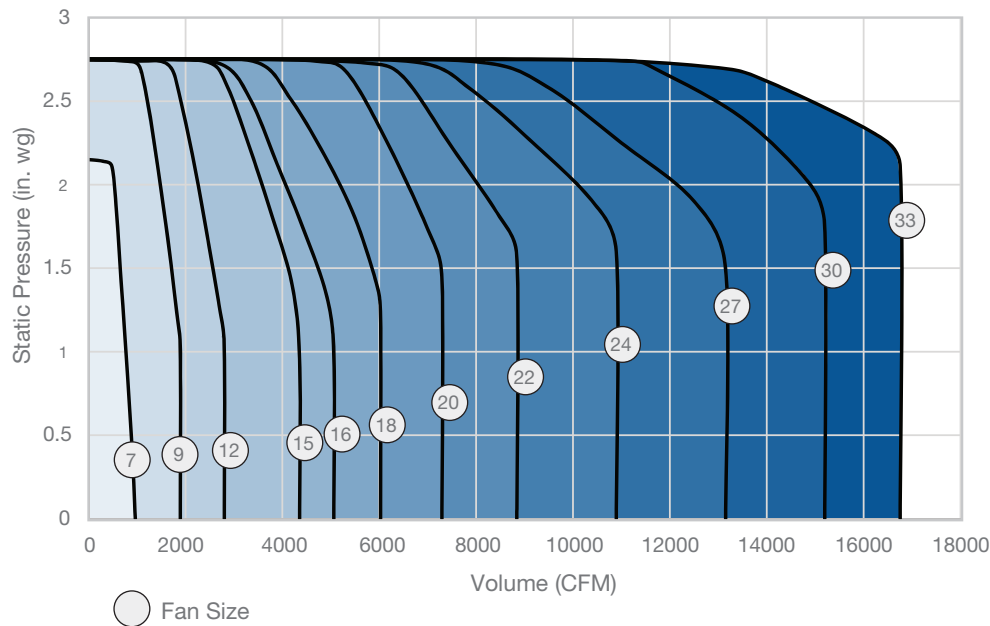
## FEATURES AND BENEFITS

- Mixed flow wheel improves airflow and efficiency while reducing sound and footprint (many sections meet or exceed FEI >1)
- Panels on either side of a unit provide quick access and inspection
- Totally enclosed motors eliminate the need for a motor cover and improve motor access
- Aluminum 1-inch filters are provided standard
- Knockdown field installed weatherhood and outdoor covering
- Vari-Green® motor offering up to and including 10 hp

## OPTIONS AND ACCESSORIES

- MERV13 2-inch filters (bottom intake only)
- Multiple intake options
- Multiple discharge options
- Roof curbs and accessories
- Duct adapters
- Backdraft and control dampers
- Decorative and protective coatings
- Duct collars
- Multiple isolation options
- Disconnect switches
- Multiple control options

## PERFORMANCE



Greenheck Fan Corporation certifies the model KSQ fans shown herein are licensed to bear the AMCA Seal. The ratings shown are based on tests and procedures performed in accordance with AMCA Publication 211 and Publication 311 and comply with the requirements of the AMCA Certified Ratings Program.



UL/cUL 705  
Listed for Electrical  
Listed for Outdoor Use  
File no E40001

**Specify with Confidence. Specify Greenheck.**  
Connect with your local mechanical representative to learn more.

P.O. Box 410 | Schofield, WI 54476 | 715-359-6171 00.F&V.NB027 R1 4-2023 © 2023 Greenheck Fan Corp.

