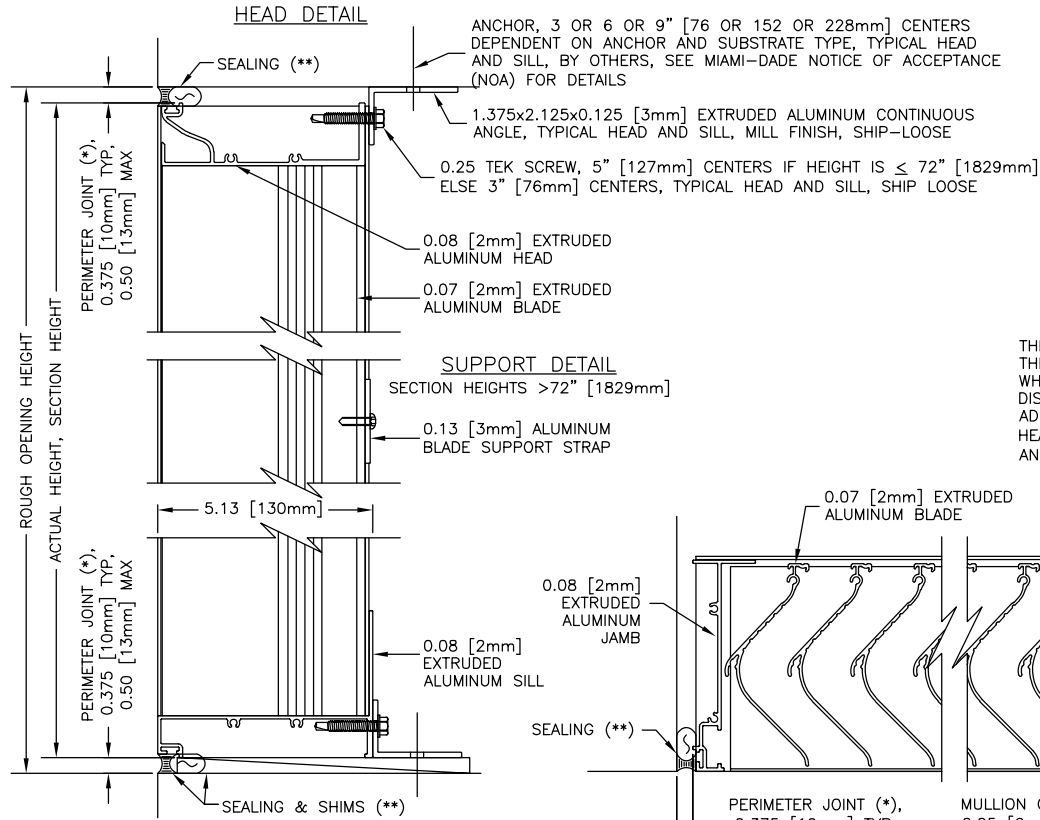
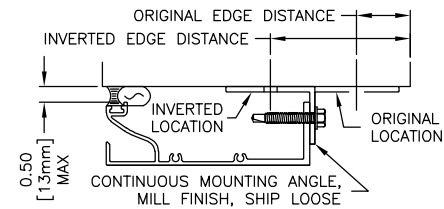


(*) TYPICAL VALUE IS THE STANDARD DOWNSIZING VALUE WHEN ORDERED BASED ON ROUGH OPENING, MAXIMUM VALUE IS THE MAXIMUM ALLOWED BY THE MIAMI-DADE NOTICE OF ACCEPTANCE (NOA).

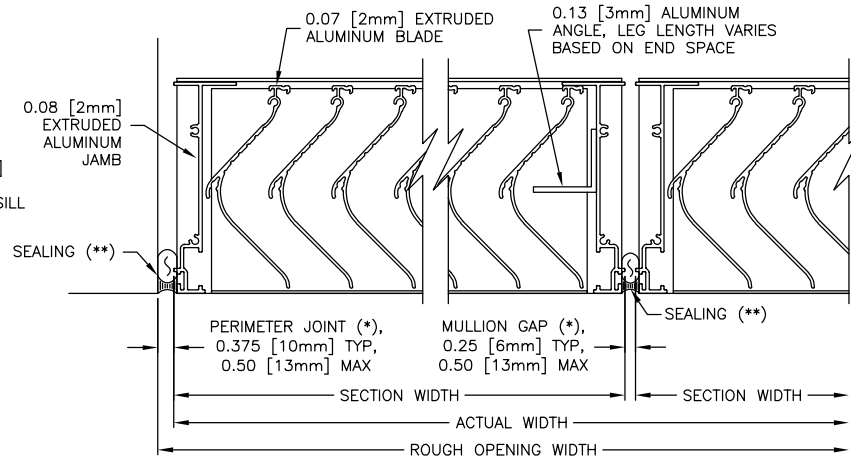
(**) SEALING, NON-COMPRESSIBLE DEAD-LOAD SHIMS, SEPARATION OF DISSIMILAR MATERIALS ARE BY OTHERS. SEALANT IS REQUIRED AROUND EACH SECTION TO COMPLY WITH AMCA 550 HIGH VELOCITY WIND DRIVEN RAIN TEST.



INVERTED MOUNTING ANGLE DETAILS
OPTIONAL HEAD/SILL MOUNTING SETUP



THE MIAMI-DADE NOTICE OF ACCEPTANCE (NOA) ALLOWS THE USE OF AN INVERTED CONTINUOUS MOUNTING ANGLE, WHICH MAY HELP TO SATISFY REQUIRED MINIMUM EDGE DISTANCES. SEE THE NOA FOR ADDITIONAL DETAILS. ADDITIONAL PERIMETER GAP MAY BE NEEDED FOR ANCHOR HEAD CLEARANCE (UP TO 0.50 [13mm] MAX AT HEAD AND UP TO 0.50 MAX [13mm] AT SILL).



JAMB DETAIL

MULLION DETAIL

 <p>AIROLITE The look that works.™</p>	MODEL: SCV501MD
	SHEET: 1 OF 1