

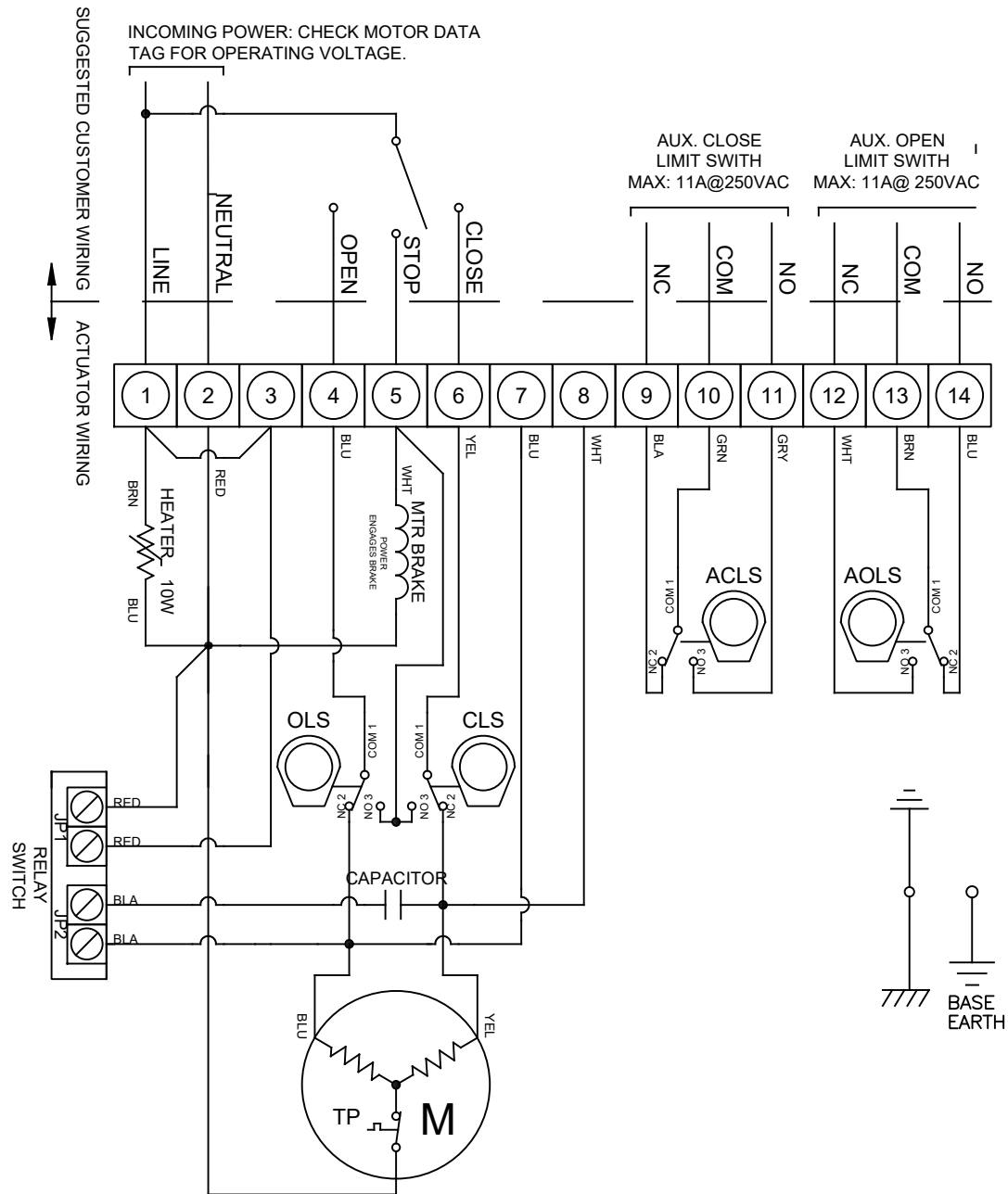


LIMIT SWITCH OPERATION			
SWITCH	CLOSED	INTERMEDIATE	OPEN
CLS 1-2			
CLS 1-3			
OLS 1-2			
OLS 1-3			
ACLS 1-2			
ACLS 1-3			
AOLS 1-2			
AOLS 1-3			
 = OPEN CIRCUIT		 = CLOSED CIRCUIT	
SYMBOL	DESCRIPTION	RATING	
ACLS	AUX. CLOSE LIMIT SWITCH	11A @ 250 VAC	
CLS	CLOSE LIMIT SWITCH		
AOLS	AUX. OPEN LIMIT SWITCH		
OLS	OPEN LIMIT SWITCH		
EACH ACTUATOR SHOULD BE POWERED THROUGH INDIVIDUAL SWITCH OR RELAY CONTACTS TO PREVENT CROSS FEED BETWEEN TWO OR MORE ACTUATORS.			

Operation Notes:

- Power to terminal 4 will drive motor CCW. Brake energizes when NO of OLS closes to hold actuator in CCW position.
- Power to terminal 6 will drive motor CW. Brake energizes when NO of CLS closes to hold actuator in CW position.
- Power to terminal 5 will energize brake and hold actuator in intermediate STOP position.
- Loss of power will cause spring to return actuator to fail position (limited by adjustable mechanical stop bolt).
- Fail Closed (FC) Model: Fail Position = CW  
Fail Open (FO) Model: Fail Position = CCW



9955 INTERNATIONAL BLVD.  
CINCINNATI, OHIO 45246  
PHONE: (513) 247-5465  
FAX: (513) 247-5462

TOLERANCE UNLESS OTHERWISE SPECIFIED:  
TWO PLACE DECIMAL  
DIM. #0.02  
THREE PLACE DECIMAL  
DIM. #0.015  
ANGULAR DIM. #0°-30'

DRAWN BY KJS  
DATE 04/01/22

CHECKED BY TEM  
DATE 04/04/22

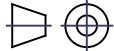
RELEASED BY TEM  
DATE 04/04/22

HEAT #

SHEET 1 OF 1

MATERIAL

DO NOT SCALE DRAWING



DESCRIPTION

SRX-0300, SRX-1200 & SRX-1800 110/220 VAC  
1 PH WIRING DIAGRAM

DRAWING NO.

se01668

REVISION

B

THE DESIGN AND DISCLOSURE CONTAINED IN THIS DRAWING WAS ORIGINATED BY, AND IS EXCLUSIVE PROPERTY OF A-T CONTROLS, INC. IT IS FURNISHED FOR VENDOR INFORMATION ONLY AND IS NOT AN AUTHORIZATION OR LICENSE TO MAKE THIS CONSTRUCTION OR TO FURNISH THIS INFORMATION TO OTHERS. ALL DRAWINGS MUST BE RETURNED TO A-T CONTROLS, INC. ON DEMAND. THIS DRAWING IS NOT TO BE REPRODUCED OR COPIED IN ANY FORM WITHOUT THE EXPRESS WRITTEN PERMISSION OF A-T CONTROLS, INC.