

LIMIT SWITCH OPERATION			
SWITCH	CLOSED	INTERMEDIATE	OPEN
CLS 1-2		■	
CLS 1-3	■		
OLS 1-2		■	
OLS 1-3			■
ACLS 1-2		■	
ACLS 1-3	■		
AOLS 1-2		■	
AOLS 1-3			■

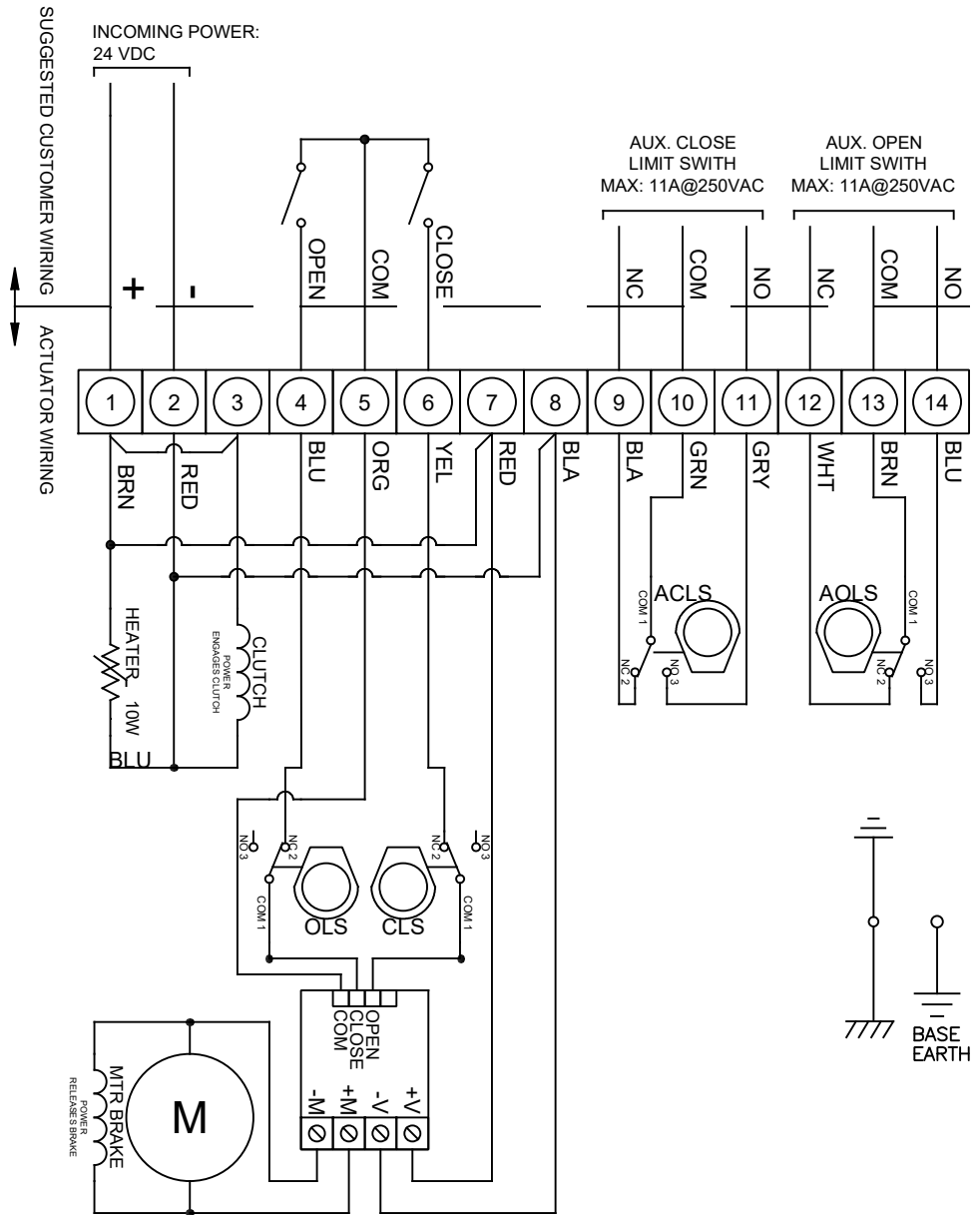
= OPEN CIRCUIT    
 = CLOSED CIRCUIT

SYMBOL	DESCRIPTION	RATING
ACLS	AUX. CLOSE LIMIT SWITCH	11A@250VAC
CLS	CLOSE LIMIT SWITCH	
AOLS	AUX. OPEN LIMIT SWITCH	
OLS	OPEN LIMIT SWITCH	

EACH ACTUATOR SHOULD BE POWERED THROUGH INDIVIDUAL SWITCH OR RELAY CONTACTS TO PREVENT CROSS FEED BETWEEN TWO OR MORE ACTUATORS.

**Operation Notes:**

- Power must be applied across terminals 2 & 3 to engage the clutch coil. Loss of power will release spring clutch and return actuator to fail position (limited by adjustable mechanical stop bolt).
- Connecting terminal 4 & 5 will drive motor CCW. Brake deenergizes (engages) when NO of OLS closes to hold actuator in CCW position.
- Connecting terminal 5 & 6 will drive motor CW. Brake deenergizes (engages) when NO of CLS closes to hold actuator in CW position.
- Removing power from terminals 5 & 4/6 will deenergize (engage) brake and hold actuator in intermediate STOP position.
- Fail Closed (FC) Model: Fail Position = CW  
Fail Open (FO) Model: Fail Position = CCW



	9955 INTERNATIONAL BLVD. CINCINNATI, OHIO 45246 PHONE: (513) 247-5465 FAX: (513) 247-5462	<small>TOLERANCE UNLESS OTHERWISE SPECIFIED:          TWO PLACE DECIMAL          DIM. ±0.02          THREE PLACE DECIMAL          DIM. ±0.010          ANGULAR DIM. ±0°-30'</small>	DRAWN BY KJS CHECKED BY TEM RELEASED BY TEM	HEAT # SHEET 1 OF 1
	DO NOT SCALE DRAWING 	DESCRIPTION SRX-0600 24VDC WIRING DIAGRAM	DATE 04/01/22 DATE 04/04/22 DATE 04/04/22	MATERIAL DRAWING NO. se01669

THE DESIGN AND DISCLOSURE CONTAINED IN THIS DRAWING WAS ORIGINATED BY, AND IS EXCLUSIVE PROPERTY OF A-T CONTROLS, INC. IT IS FURNISHED FOR VENDOR INFORMATION ONLY AND IS NOT AN AUTHORIZATION OR LICENSE TO MAKE THIS CONSTRUCTION OR TO FURNISH THIS INFORMATION TO OTHERS. ALL DRAWINGS MUST BE RETURNED TO A-T CONTROLS, INC. ON DEMAND. THIS DRAWING IS NOT TO BE REPRODUCED OR COPIED IN ANY FORM WITHOUT THE EXPRESS WRITTEN PERMISSION OF A-T CONTROLS, INC.