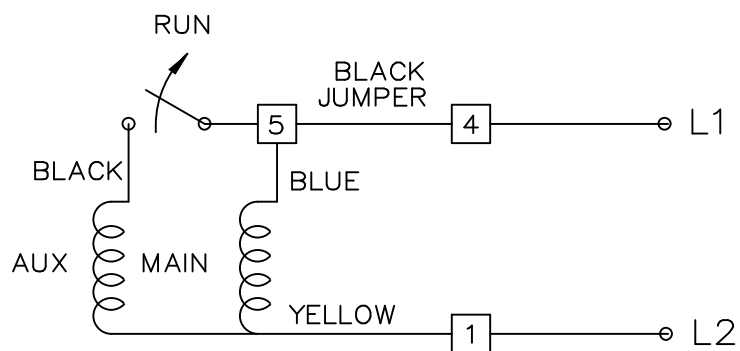
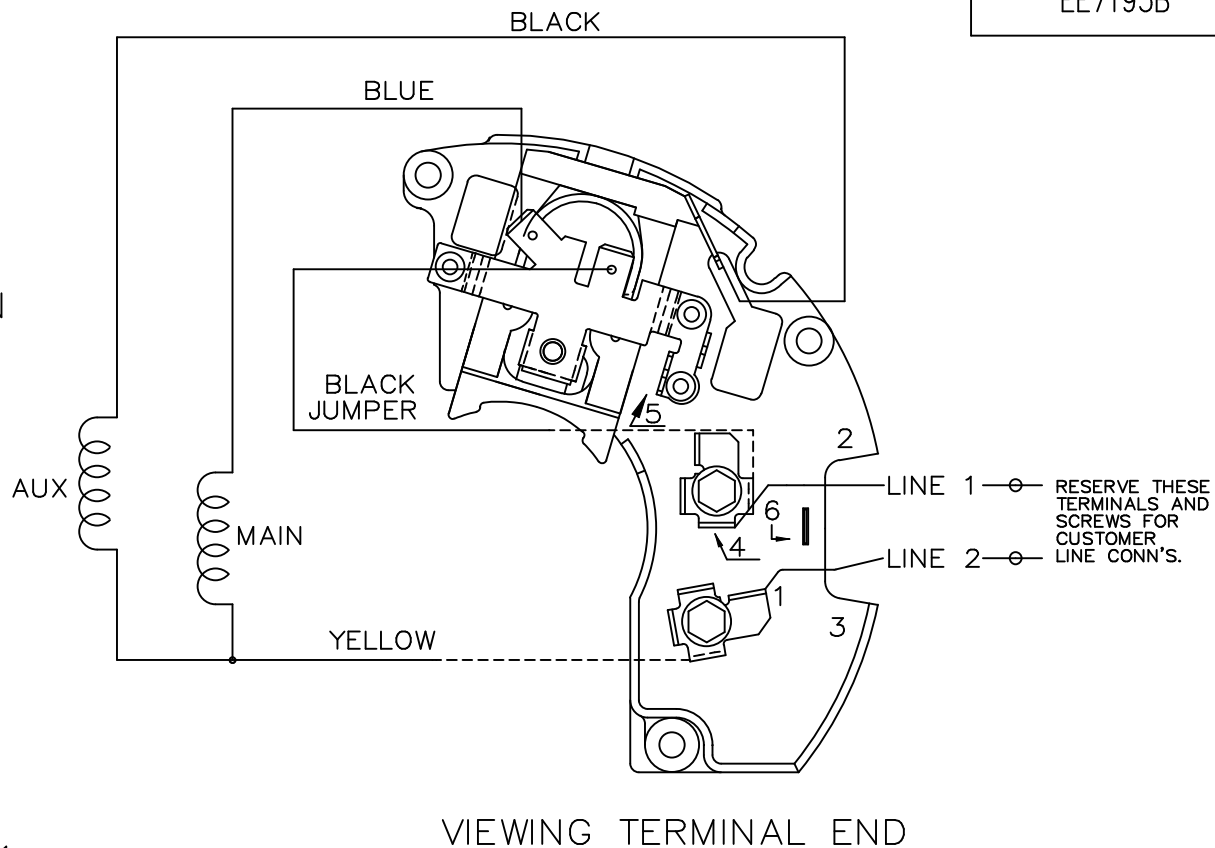



EE7195B

SINGLE VOLTAGE — SPLIT PHASE
NON REVERSIBLE — CCW ROTATION
NO OVERLOAD PROTECTION



DASH LINES INDICATE LEADS CONNECTED
TO MOTOR SIDE OF SWITCH.

			TOLERANCES UNLESS SPECIFIED				DRAWN ML 05-30-1990		
			DEC.	INCHES			CHK		
			.X	±	-		APPD DRN 06-04-1990		
3	REDRAWN IN AUTOCAD	RWR 06-15-2004	ML	.XX	±	-	TITLE CONNECTION DIAGRAM 48 FR. SINGLE VOLTAGE NON REVERSIBLE		
2	REVISED LINE 2 LOCATION CN6427	RM 01-28-1991	GK	.XXX	±	-			
1	NEW DRAWING	ML 05-30-1990	GK	.XXXX	±	-	SCALE 1=1		
NO.	REVISION	BY & DATE	CHK	ANG	±	-	REF		
						MAT'L.			FMF
						FINISH			PREV
THIS DRAWING IN DESIGN AND DETAIL IS OUR PROPERTY AND MUST NOT BE USED EXCEPT IN CONNECTION WITH OUR WORK ALL RIGHTS OF DESIGN AND INVENTION ARE RESERVED THIS IS AN ELECTRONICALLY GENERATED DOCUMENT - DO NOT SCALE THIS PRINT			RFP			CAD FILE ee7195b			SIZE
			DIST LB			A			DRAWING NO. PAGE 1 OF 1
						EE7195B			REV. 3