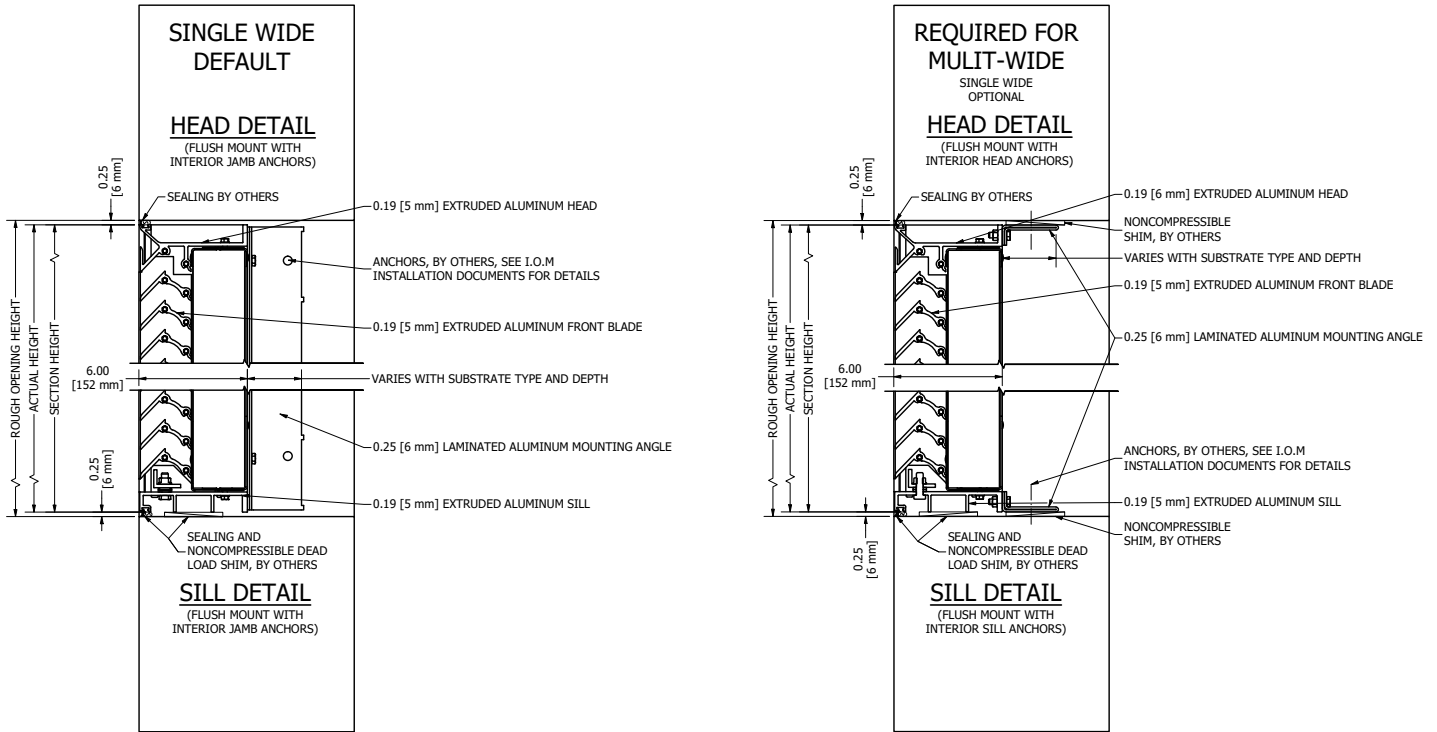


AFG601

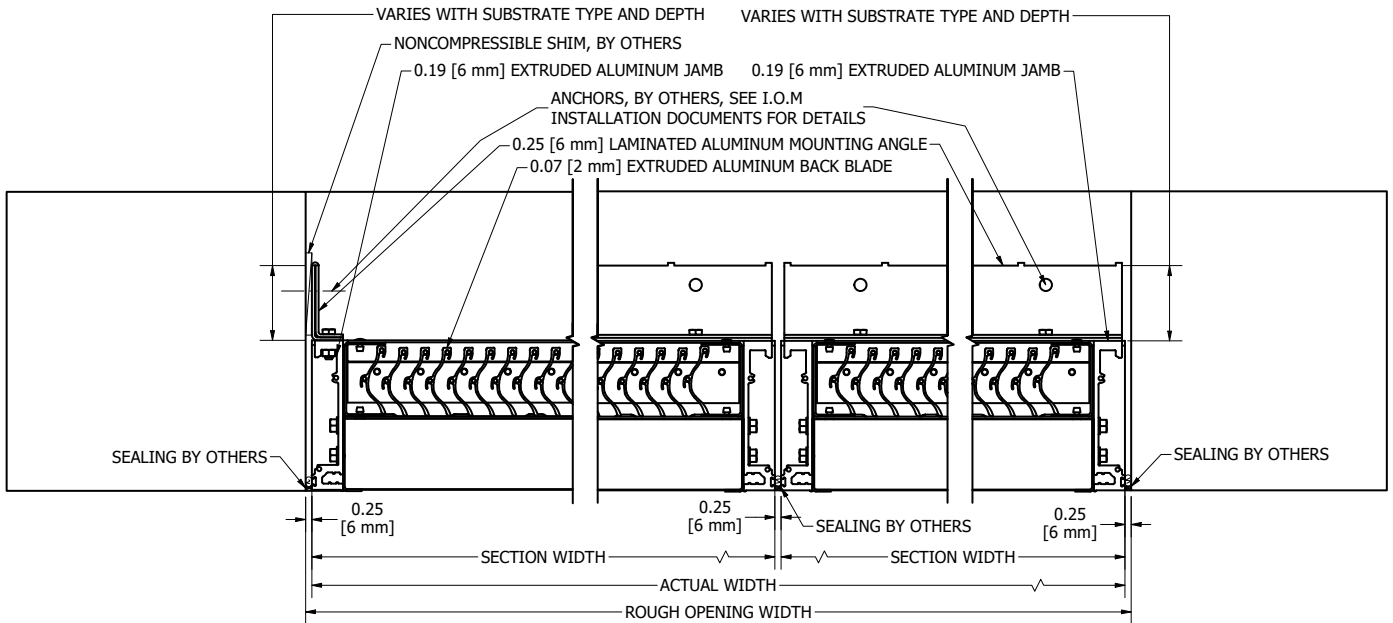
AMCA 540 and 550 Listed Hurricane Louver
 FEMA Louver | Chevron Blade
 Extruded Aluminum | Storm Class



JAMB DETAIL
 (FLUSH MOUNT WITH INTERIOR JAMB ANCHORS)

MULLION DETAIL
 (REQUIRES HEAD/SILL MOUNTING OPTION)

JAMB DETAIL
 (FLUSH MOUNT WITH INTERIOR HEAD/SILL ANCHORS)



Details shown are generic. Reference the IOM documents available for configuration specific details.

