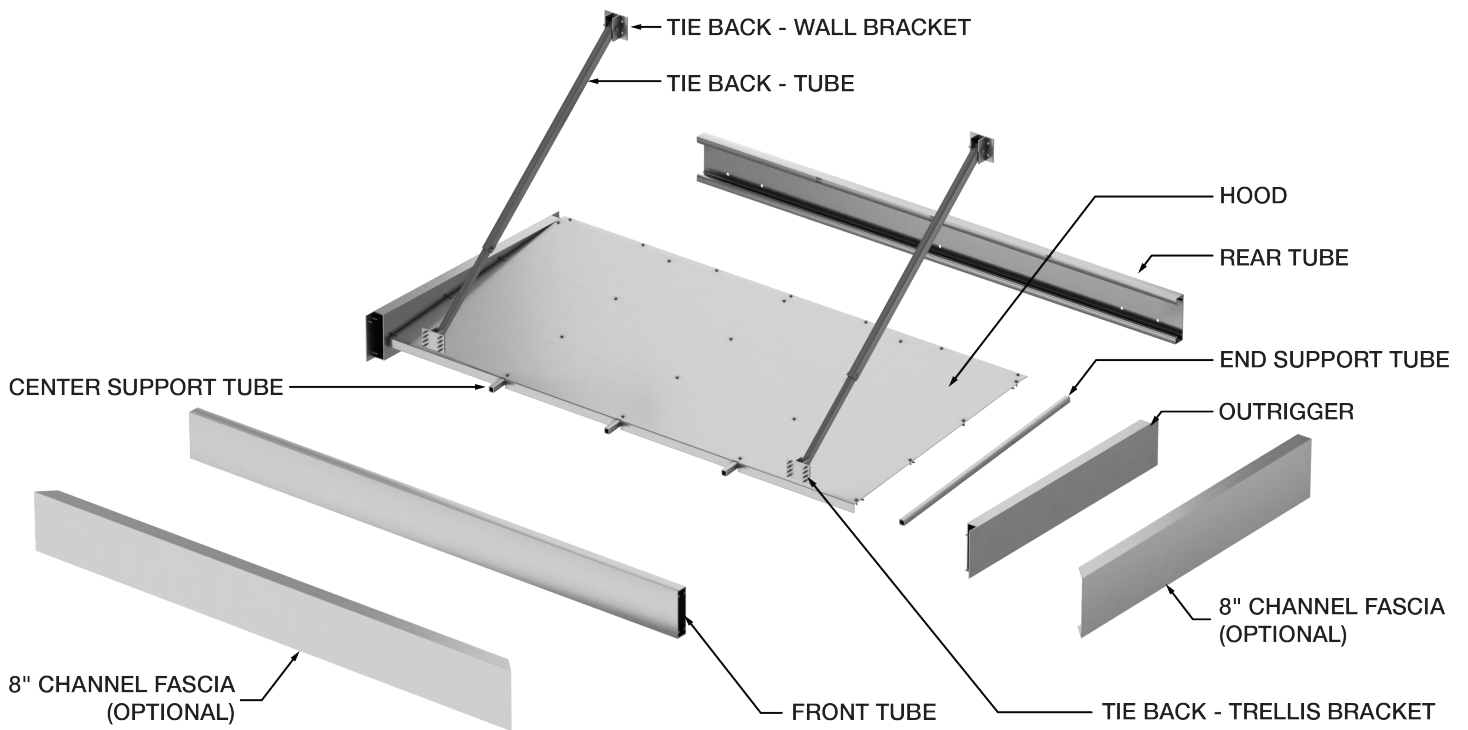


# C800H

Architectural Canopy | Extruded Aluminum



## Single Canopy Install Overview

- Layout canopy system as per submission drawings
- Mount tieback brackets to the support wall - see submission details for proper mounting locations
- Level and connect the canopy section to the tieback brackets using the sleeved tubes
- Drill and pin the tieback in place
- Install flashing (by others) in provided
- Support canopy section at location
- Install thru-bolts or lags based on drawings for canopy section
- Optional: cut fascia to length on multi-wide sections (if a single section, does not apply)

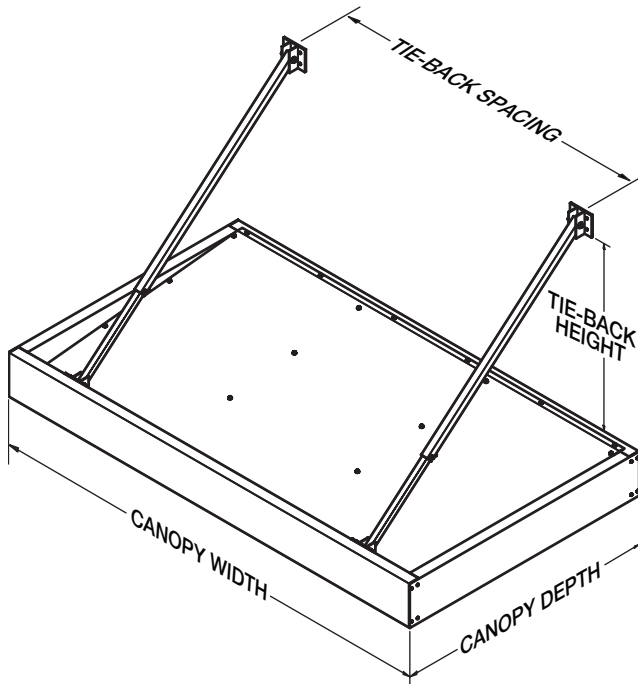
**AIROLITE**<sup>®</sup>  
The look that works.<sup>™</sup>

# C800H

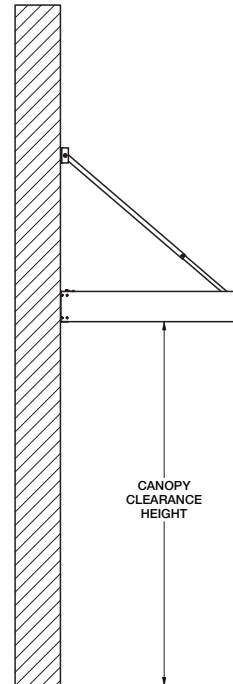
Architectural Canopy | Extruded Aluminum

## Layout and Canopy Mounting

1. Locate the tie-back wall brackets and see the submission details for location.
2. Mark location at bottom of canopy.
3. Locate the main canopy in position, level and fasten to wall.

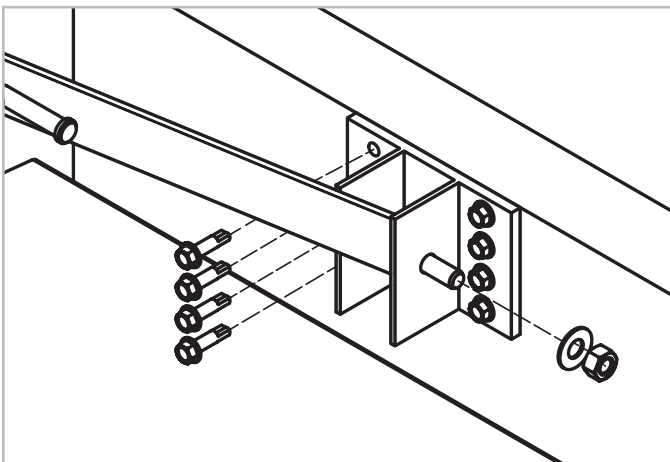


Definitions of canopy dimensions



Defining canopy clearance height

4. Using the Ship Loose parts, sleeve the tieback tubes then bolt the tie-back tubes in place using the existing holes. Drill a 3/8" hole using the bottom hole of the outside tube as a guide, and pin the tie-back tubes in place.



Drill 3/8" hole in the tie-back tube when the top and bottom tubes are bolted and canopy is level.

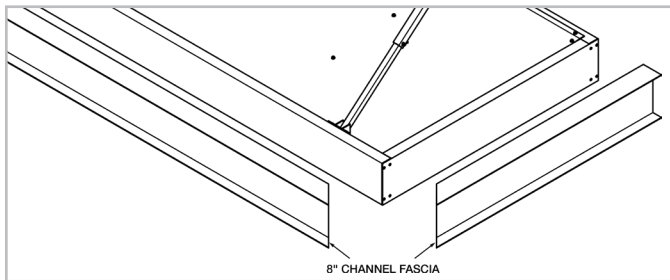
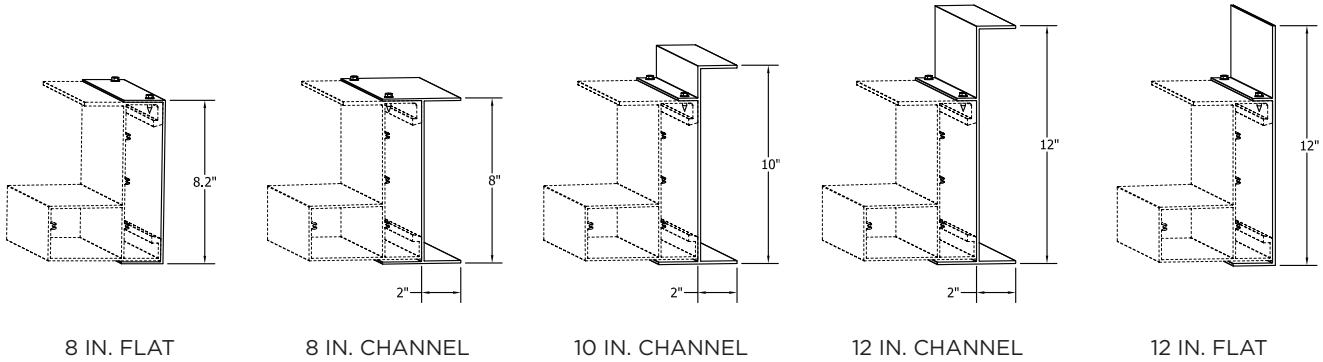
**AIROLITE**<sup>®</sup>  
The look that works.<sup>™</sup>

# C800H

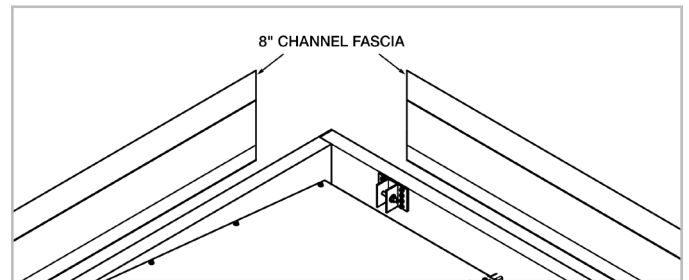
Architectural Canopy | Extruded Aluminum

## Fascia attachment

Depending on the desired visual aesthetic you may have one of the following fascia types as shown below. All fascia types should be attached using the provided fasteners to screw into the top lip of the fascia on the mounting flange and then into the top of the channel. Starting 2" from the outside edge, screw the fascia to the flange on 12-18" centers. In multi-section applications, the fascia will arrive shipped loose, and will require field cutting and mitering at the corners as shown in Fig.9-10.



Fascia installation



Multi-section applications will require the fascia to be mitered in the field

