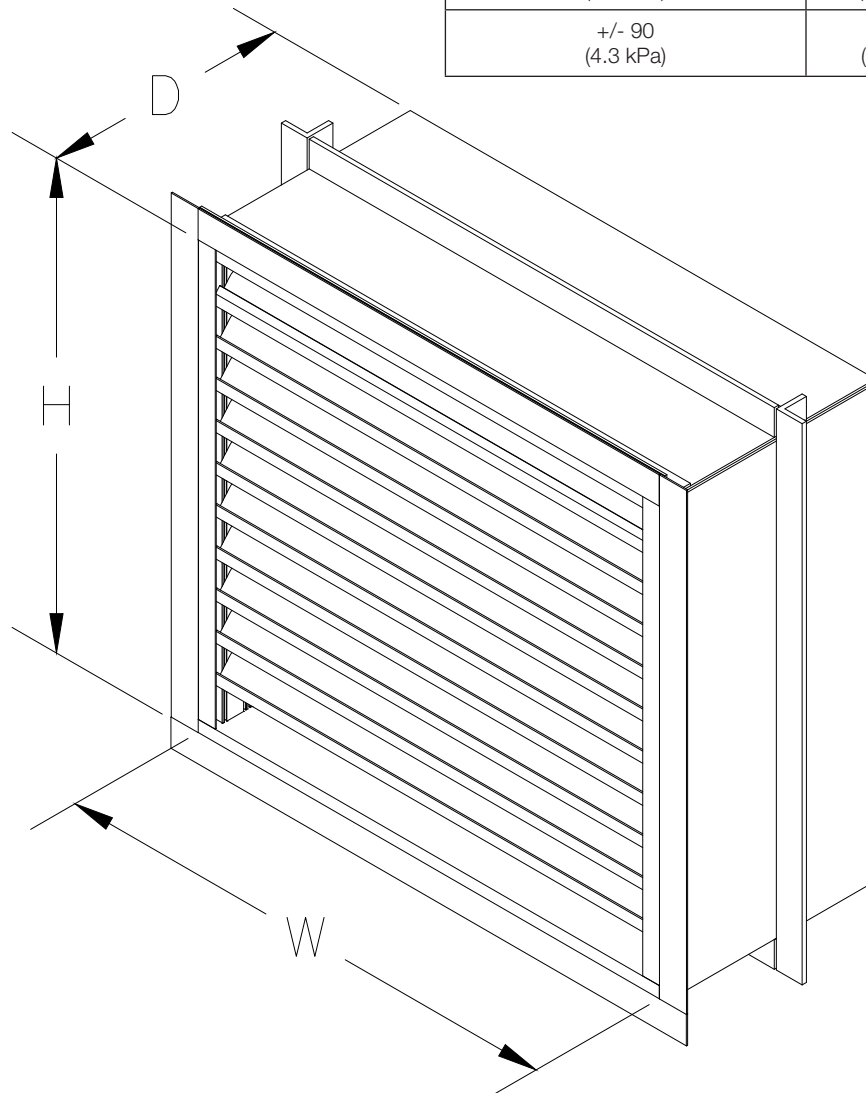


Installation, Operation and Maintenance Manual

Please read and save these instructions for future reference. Read carefully before attempting to assemble, install, operate or maintain the product described. Protect yourself and others by observing all safety information. Failure to comply with these instructions will result in voiding of the product warranty and may result in personal injury and/or property damage.

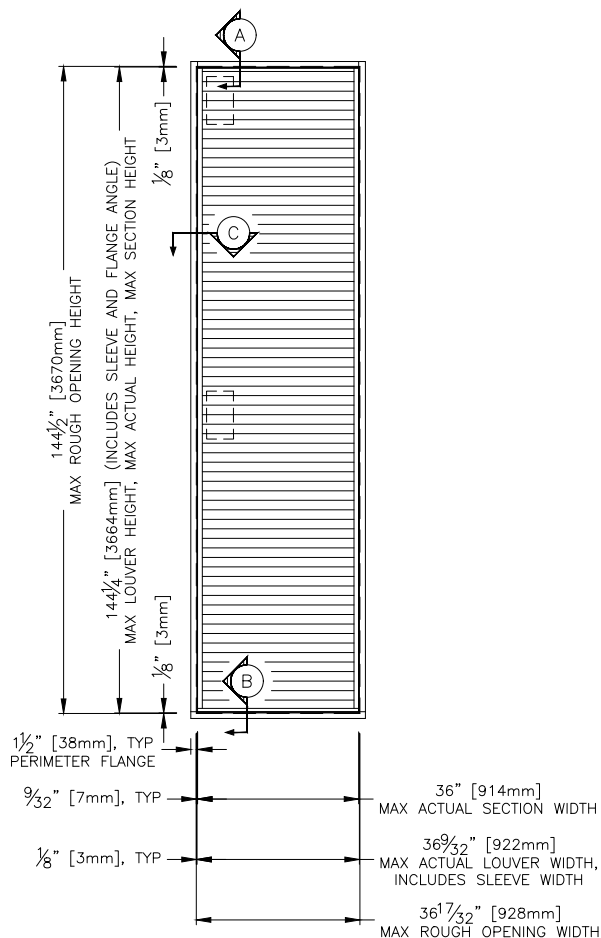
Wind Load Table	
Design Pressure Rating	Maximum Single Section Size
+/- 150 PSF (7.2 kPa)	43 in. W x 144 in. H (1092 mm W x 3658 mm H)
+/- 130 (6.2 kPa)	49.5 in. W x 144 in. H (1257 mm W x 3658 mm H)
+/- 105 (5.0 kPa)	61.5 in. W x 144 in. H (1562 mm W x 3658 mm H)
+/- 90 (4.3 kPa)	72 in. W x 144 in. H (1829mm W x 3658 mm H)



Maximum Size and Installation Information

Model EHH-601D is a Miami-Dade Qualified and Florida Product Approved louver and must be installed in accordance with the installation instructions shown herein. Model EHH-601D with Flange/Sleeve is qualified for installation into any substrate that can withstand the loads transferred to by the louver, including but not limited to concrete/masonry, aluminum, steel stud, and structural steel framed building conditions. The maximum design wind load for model EHH-601D varies depending on configuration (reference wind load table). The maximum single section rough opening width is 36.75 in. The maximum single section rough opening height is 144.50 in. While the maximum rough opening height is limited to 144.50 in., the rough opening width is limited to 1,000 in. as multiple sections may be installed side by side in accordance with installation instructions.

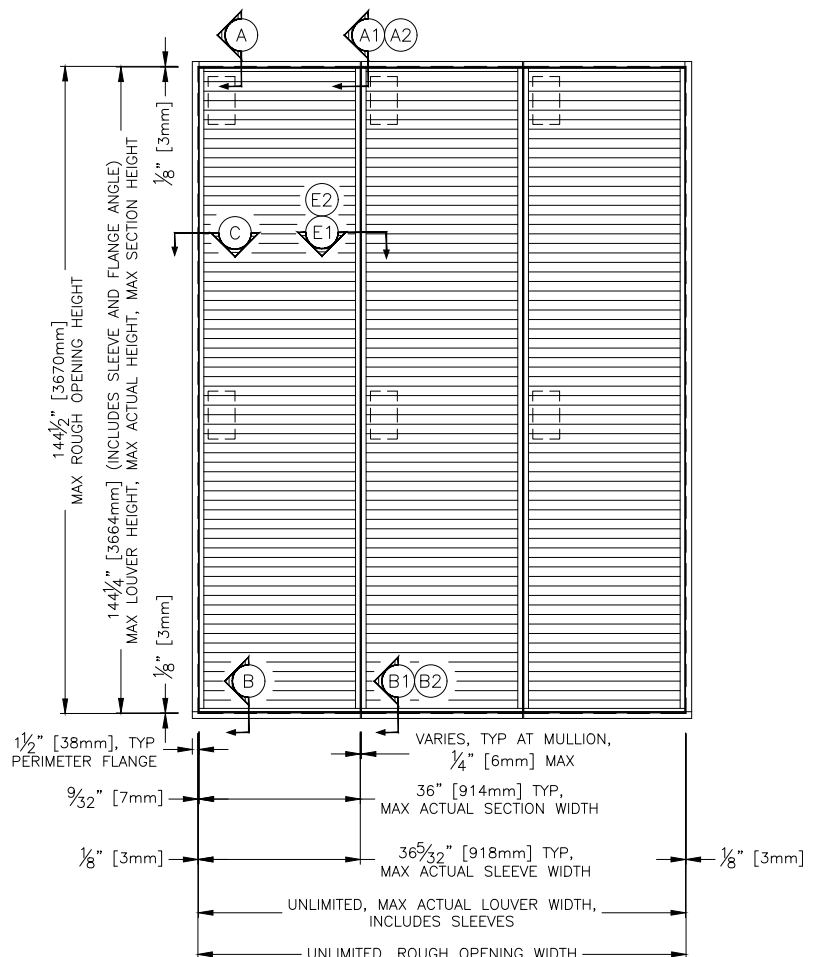
SINGLE SECTION



Minimum Rough Opening Size

12 in. W x 13.125 in. H

MULTIPLE SECTIONS



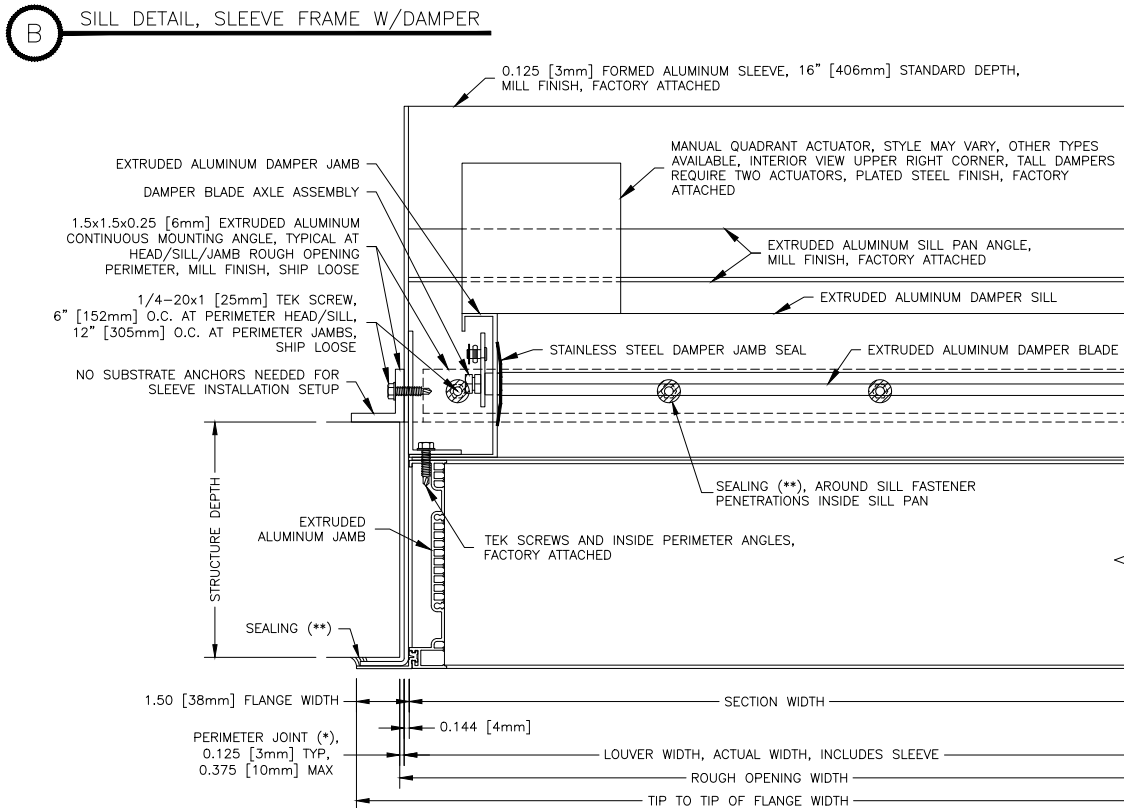
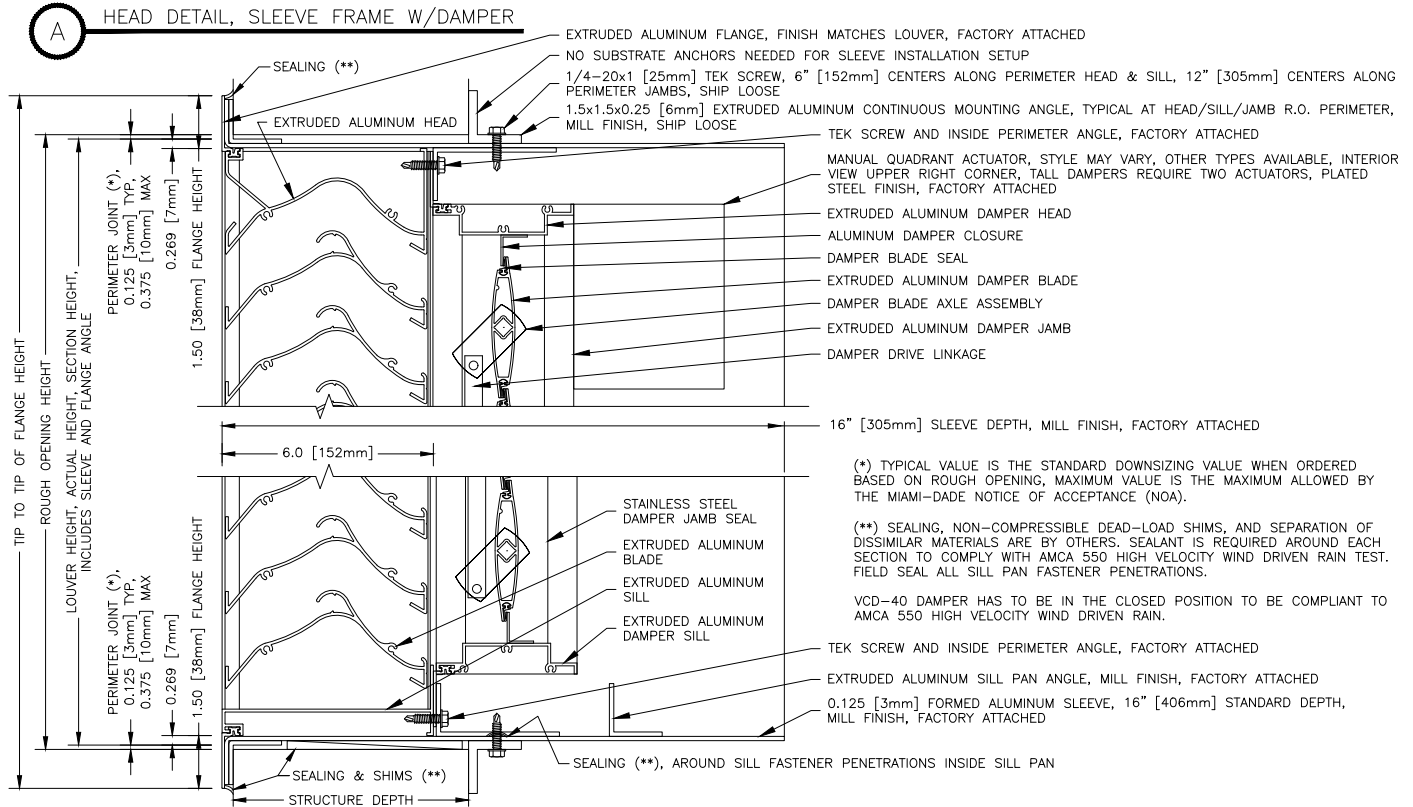
Maximum Single Section Rough Opening Size

36.75 in. W x 144.50 in. H

Building Condition/Substrate Limitations

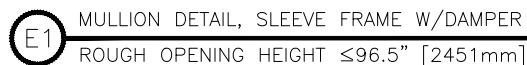
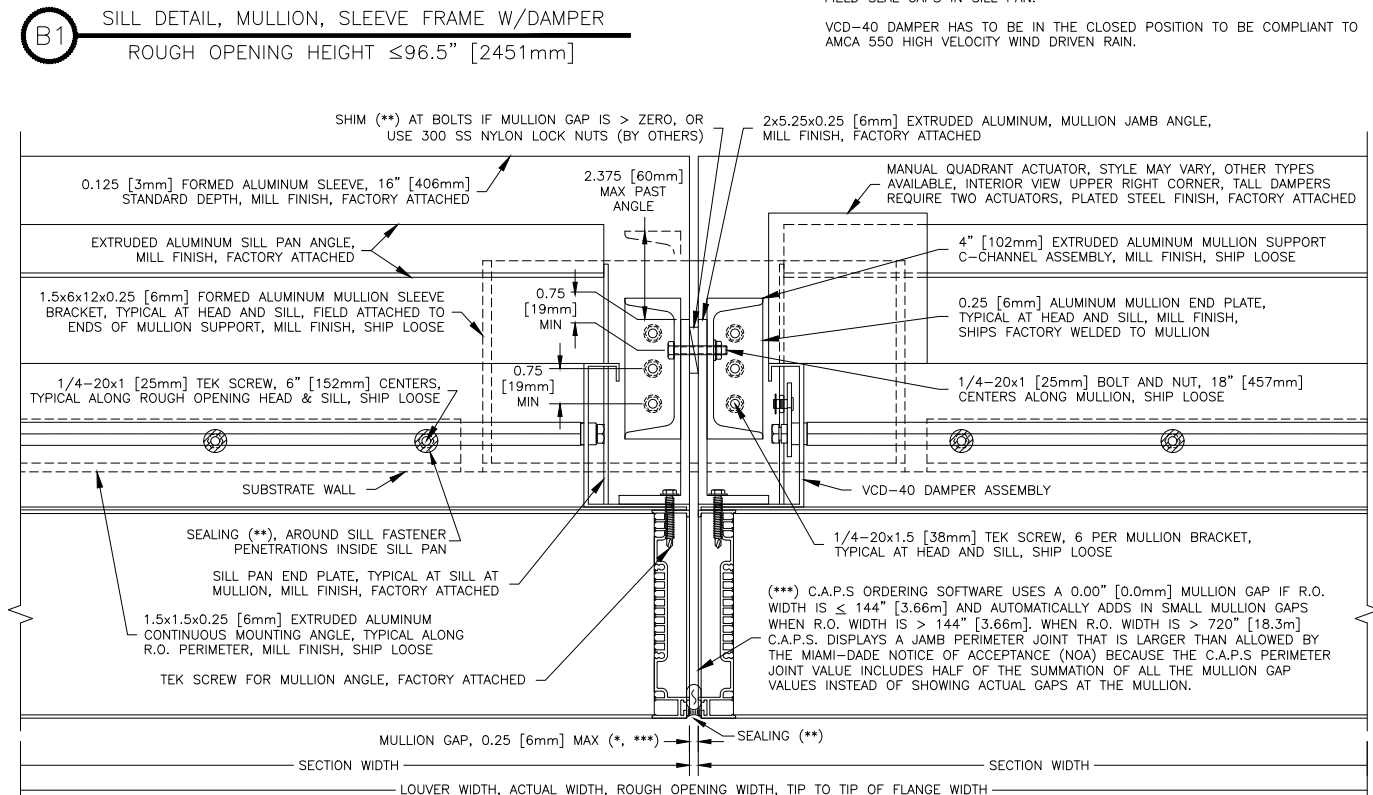
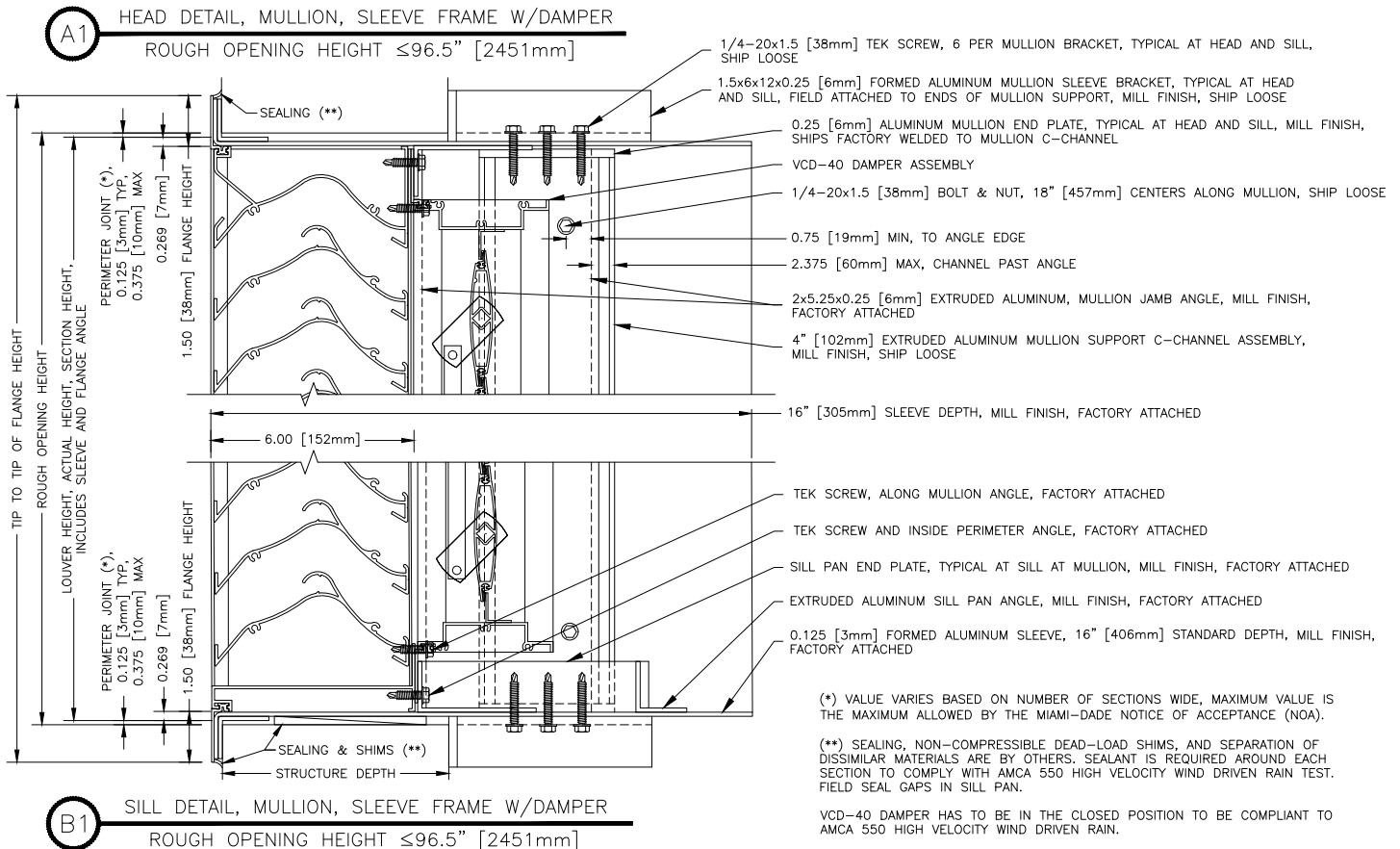
Model EHH-601D with Flange/Sleeve is qualified for installation into any substrate that can withstand the loads transferred to by the louver, including but not limited to concrete/masonry, aluminum, steel stud, and structural steel framed building conditions.

Flange/Sleeve Installation with VCD-40 Damper



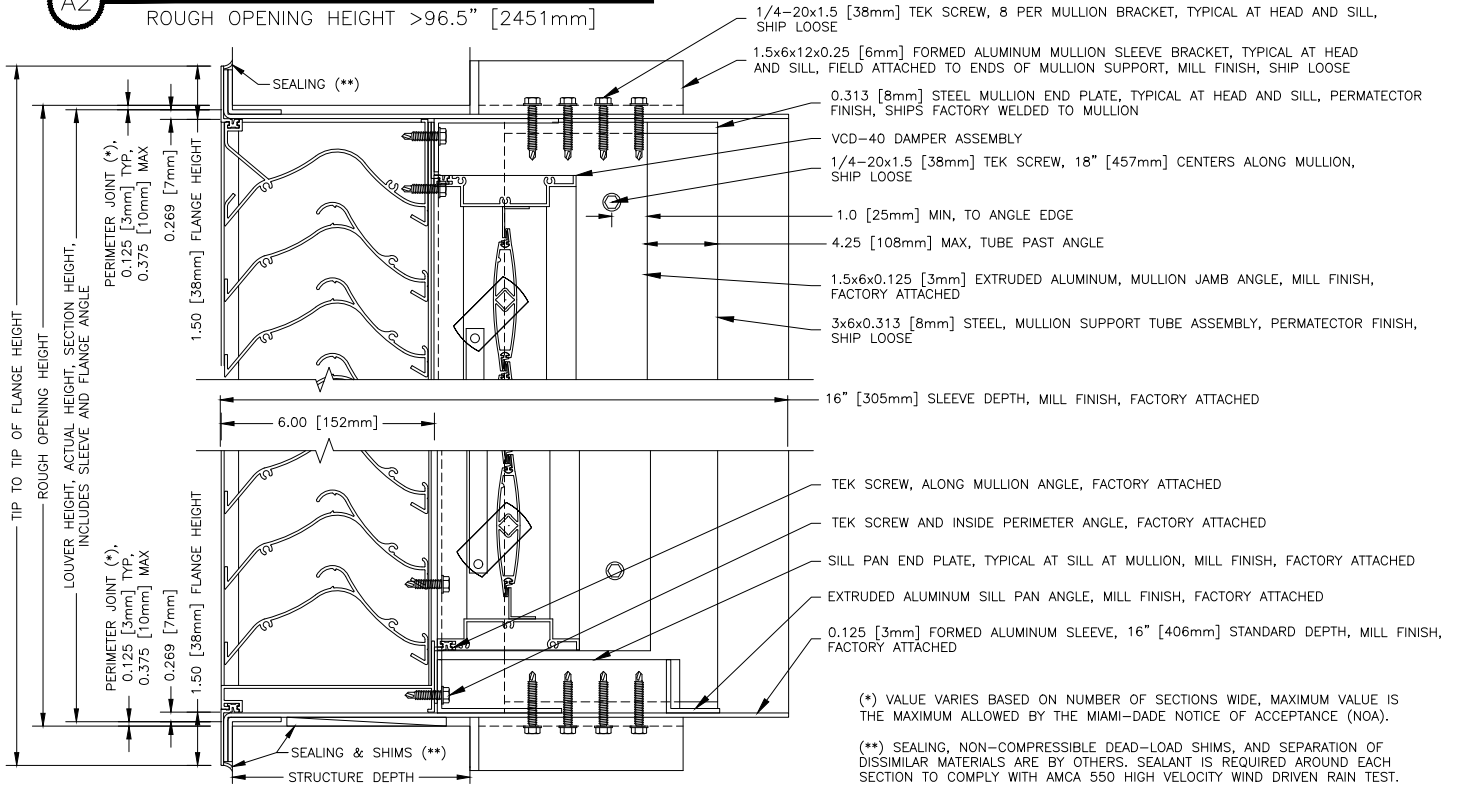
C JAMB DETAIL, SLEEVE FRAME W/DAMPER

Flange/Sleeve Installation with VCD-40 Damper

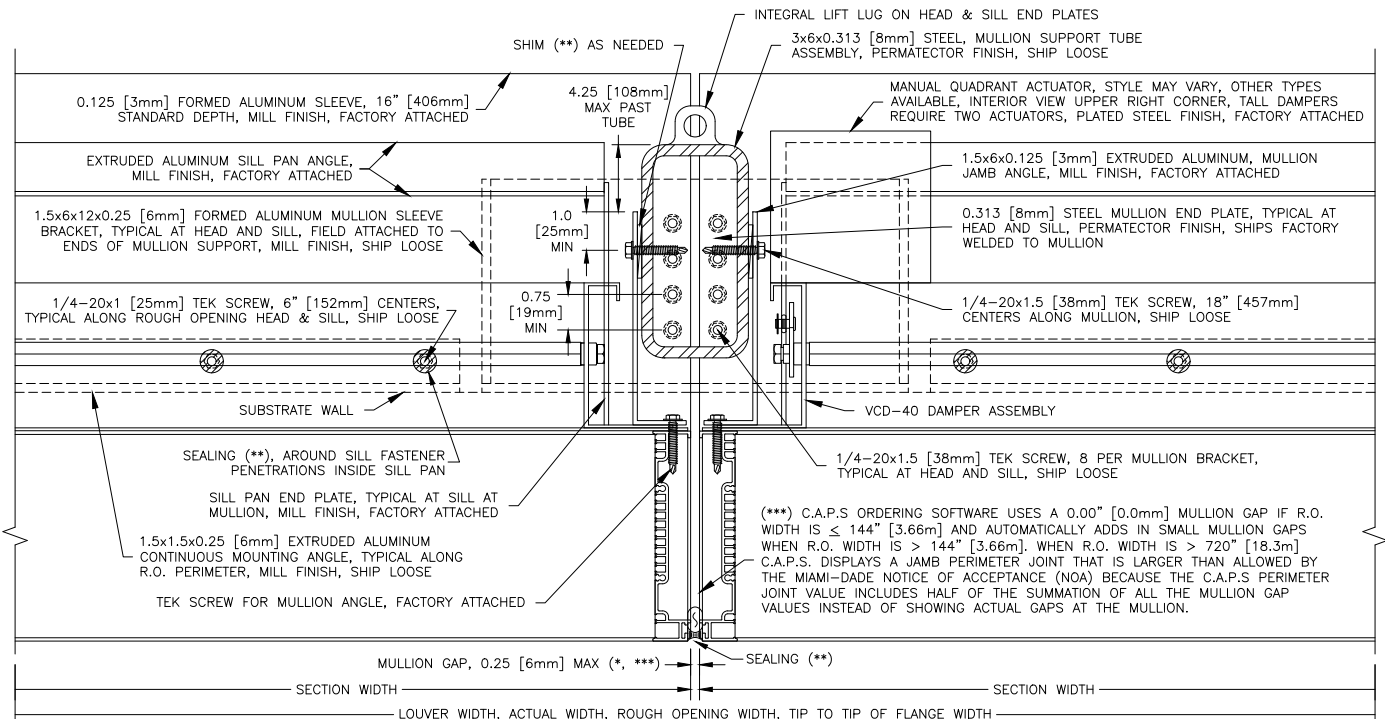


Flange/Sleeve Installation with VCD-40 Damper

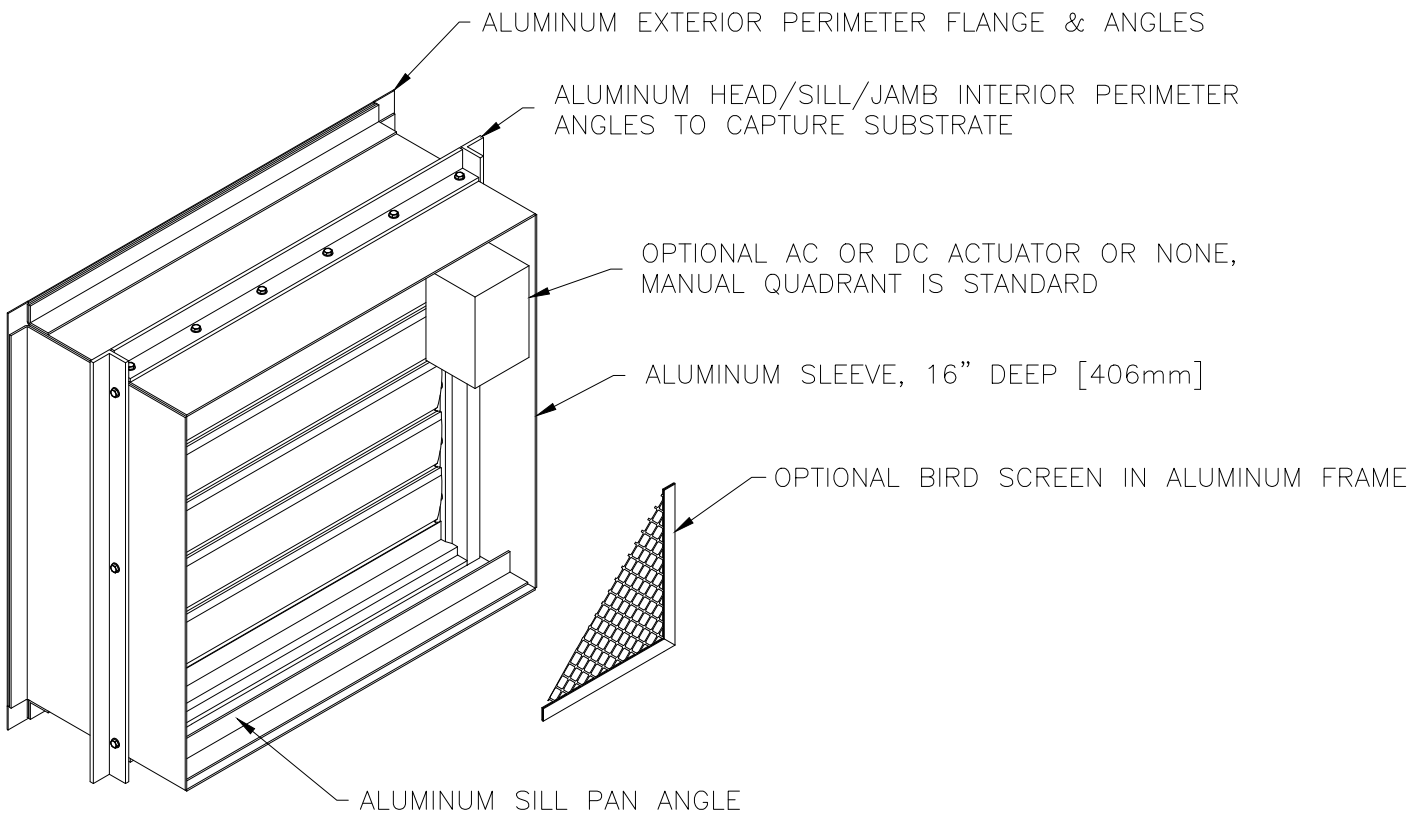
A2 HEAD DETAIL, MULLION, SLEEVE FRAME W/DAMPER
ROUGH OPENING HEIGHT >96.5" [2451mm]



B2 SILL DETAIL, MULLION, SLEEVE FRAME W/DAMPER
ROUGH OPENING HEIGHT >96.5" [2451mm]



E2 MULLION DETAIL, SLEEVE FRAME W/DAMPER
ROUGH OPENING HEIGHT >96.5" [2451mm]

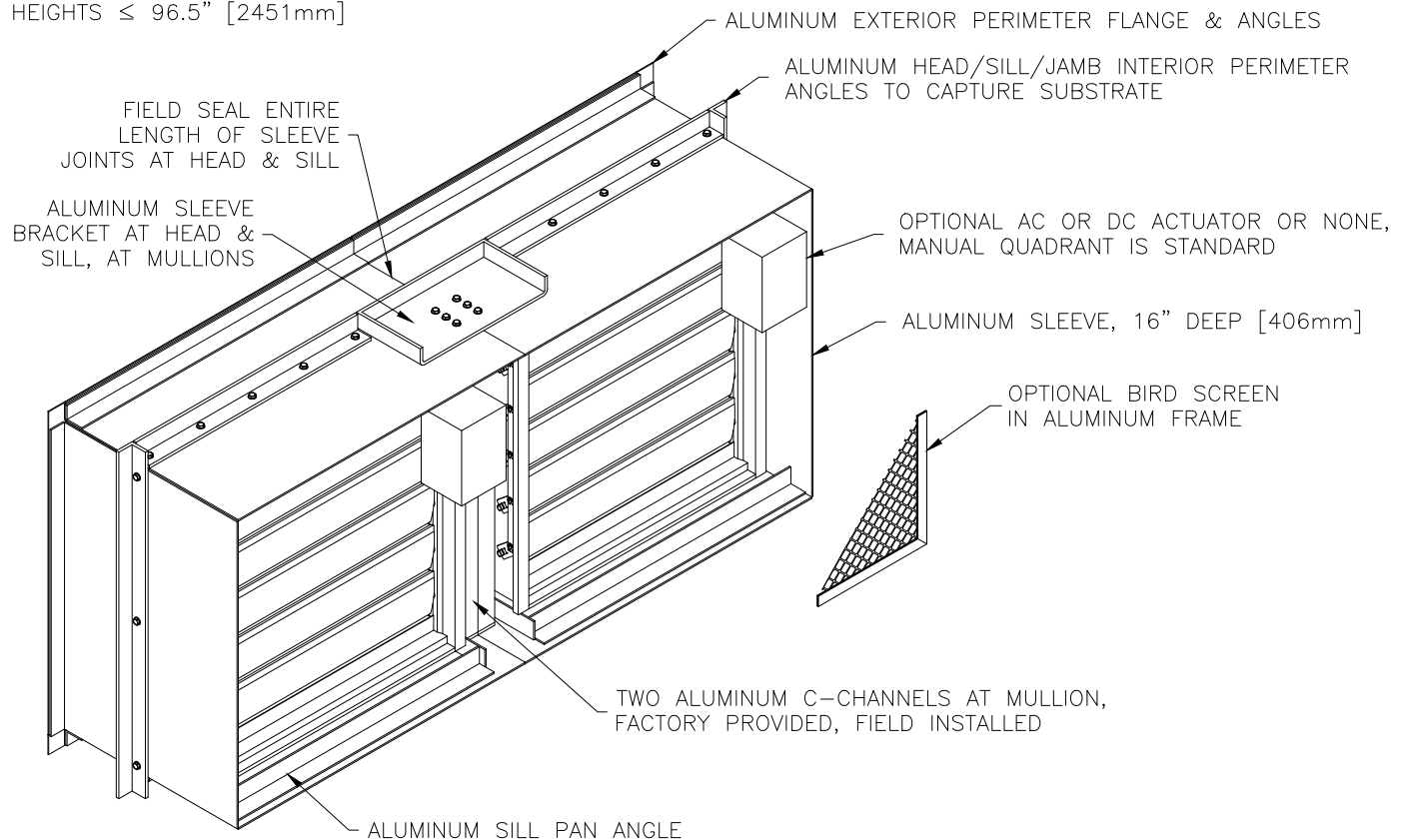


Structure Depth

- Min. structure depth 8.0 in.
- Max. structure depth 10.5 in.

Flange/Sleeve Installation with VCD-40 Damper

BELOW CONFIGURATION IS FOR ROUGH OPENING
HEIGHTS $\leq 96.5"$ [2451mm]

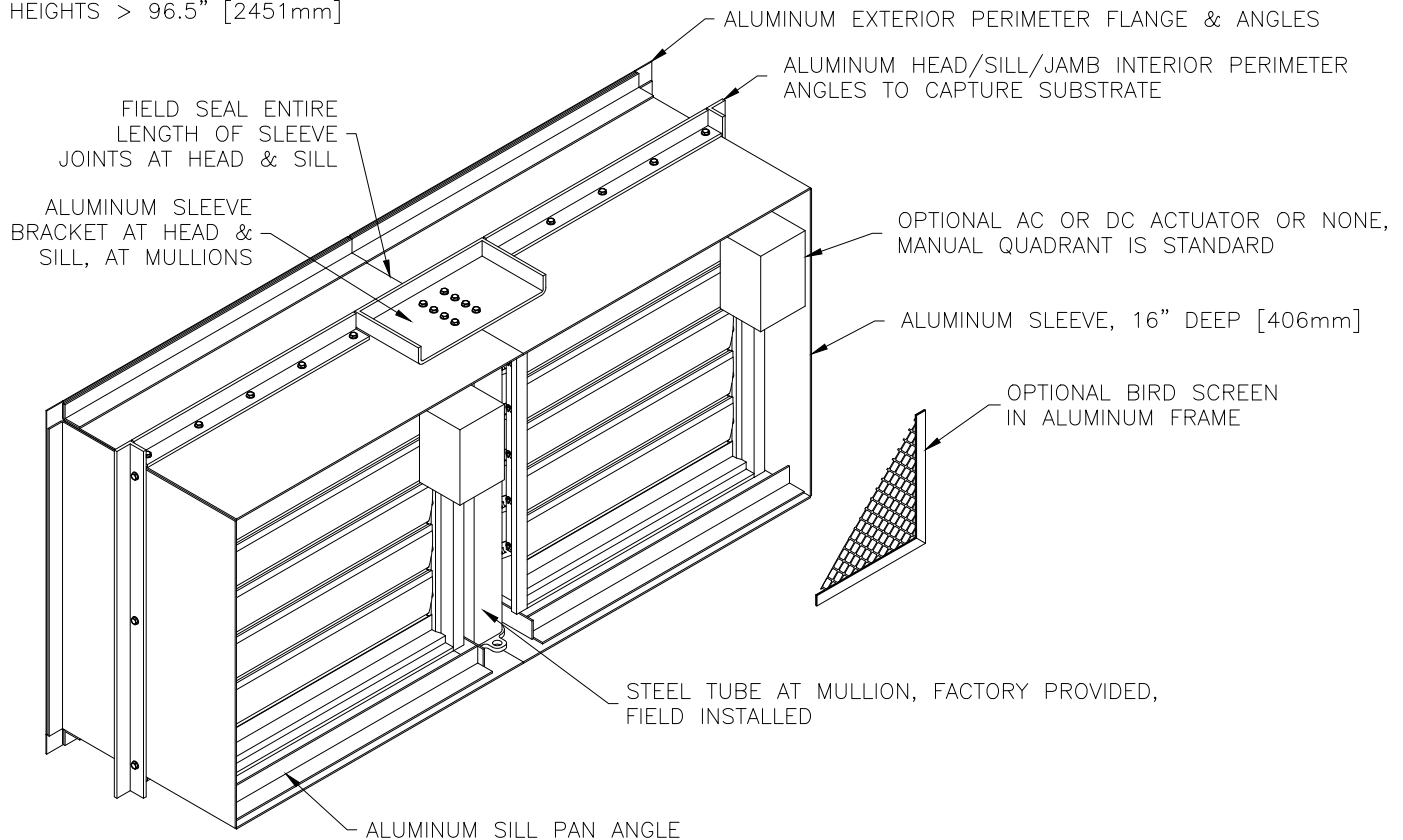


Structure Depth

- Min. structure depth 8.0 in.
- Max. structure depth 11.5 in.

Flange/Sleeve Installation with VCD-40 Damper

BELOW CONFIGURATION IS FOR ROUGH OPENING
HEIGHTS > 96.5" [2451mm]



Structure Depth

- Min. structure depth 8.0 in.
- Max. structure depth 13.25 in.

Our Commitment

As a result of our commitment to continuous improvement, Greenheck reserves the right to change specifications without notice.

Product warranties can be found online at Greenheck.com, either on the specific product page or in the literature section of the website at Greenheck.com/Resources/Library/Literature.

