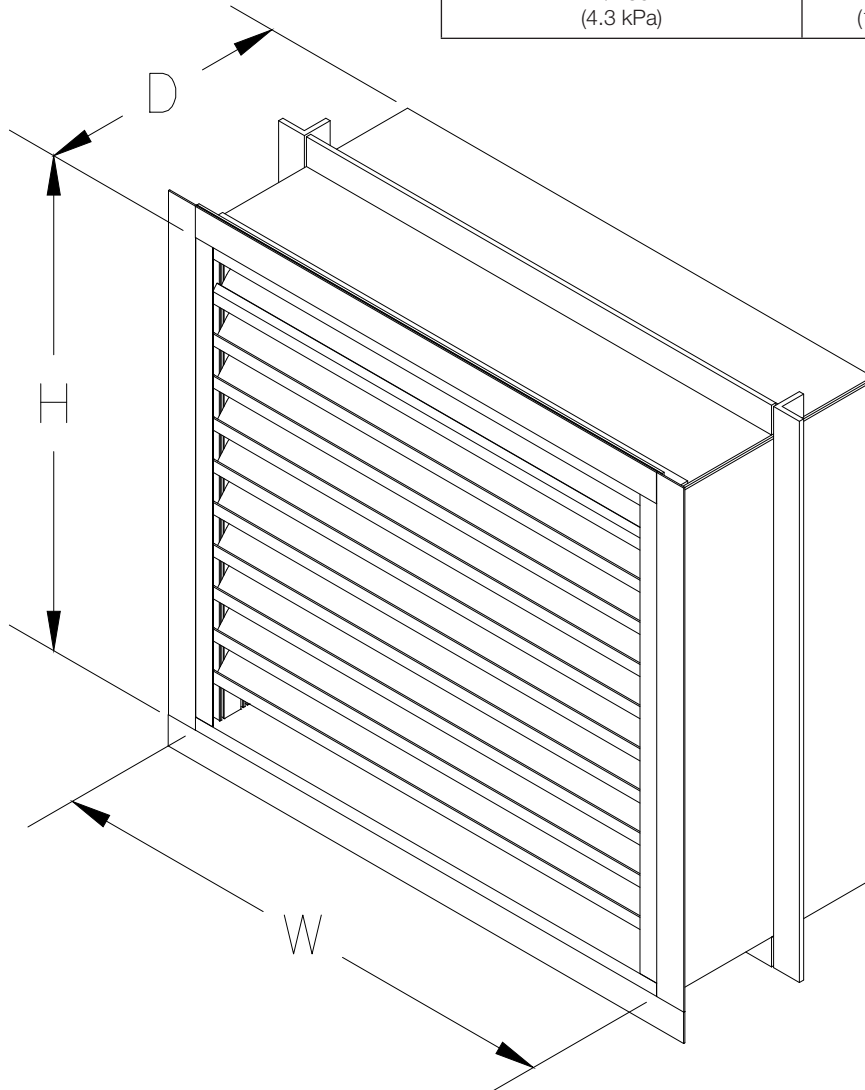


## Installation, Operation and Maintenance Manual

Please read and save these instructions for future reference. Read carefully before attempting to assemble, install, operate or maintain the product described. Protect yourself and others by observing all safety information. Failure to comply with these instructions will result in voiding of the product warranty and may result in personal injury and/or property damage.

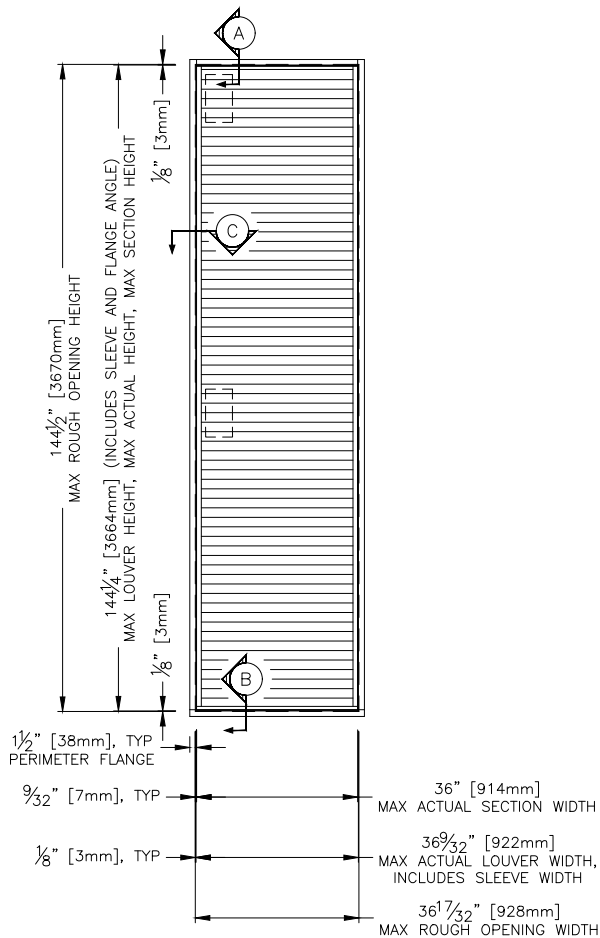
Wind Load Table	
Design Pressure Rating	Maximum Single Section Size
+/- 150 PSF (7.2 kPa)	43 in. W x 144 in. H (1092 mm W x 3658 mm H)
+/- 130 (6.2 kPa)	49.5 in. W x 144 in. H (1257 mm W x 3658 mm H)
+/- 105 (5.0 kPa)	61.5 in. W x 144 in. H (1562 mm W x 3658 mm H)
+/- 90 (4.3 kPa)	72 in. W x 144 in. H (1829mm W x 3658 mm H)



### Maximum Size and Installation Information

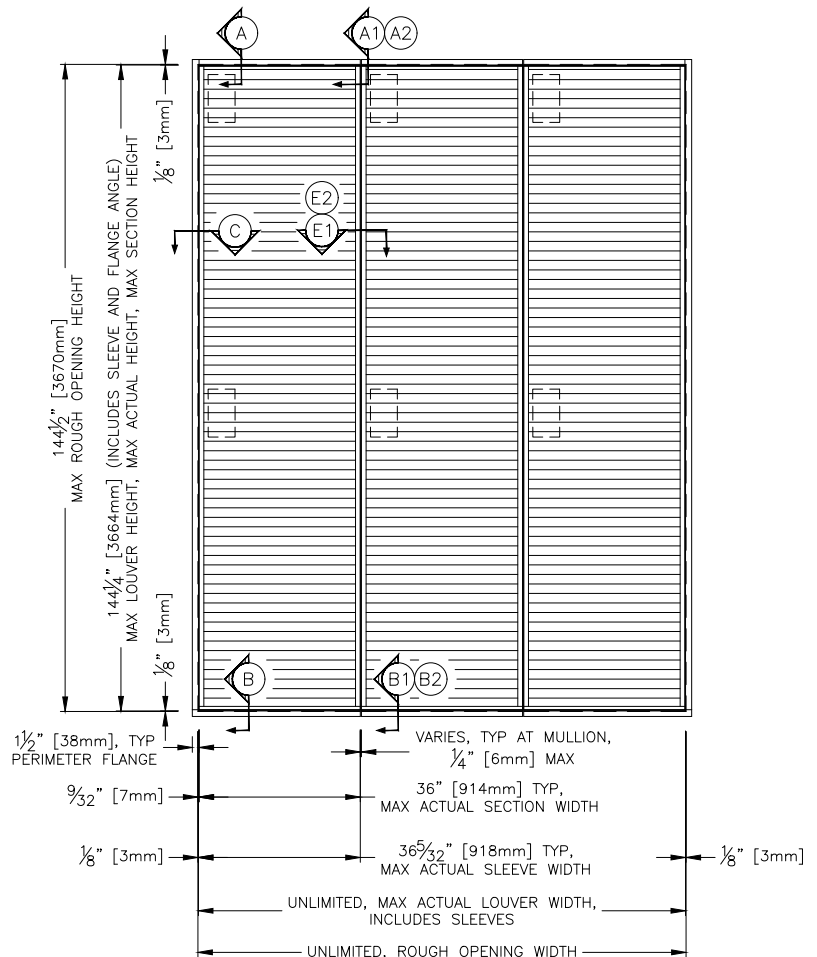
Model SCH601MD is a Miami-Dade Qualified and Florida Product Approved louver and must be installed in accordance with the installation instructions shown herein. Model SCH601MD with Flange/Sleeve is qualified for installation into any substrate that can withstand the loads transferred to by the louver, including but not limited to concrete/masonry, aluminum, steel stud, and structural steel framed building conditions. Model SCH601MD is structurally calculated to withstand positive and negative wind-loads up to 150 PSF (reference wind load table). The maximum single section rough opening width is 36.75 in. The maximum single section rough opening height is 144.50 in. While the maximum rough opening height is limited to 144.50 in., the rough opening width is limited to 1,000 in. as multiple sections may be installed side by side in accordance with installation instructions.

SINGLE SECTION



**Minimum Rough Opening Size**  
12 in. W x 13.125 in. H

MULTIPLE SECTIONS

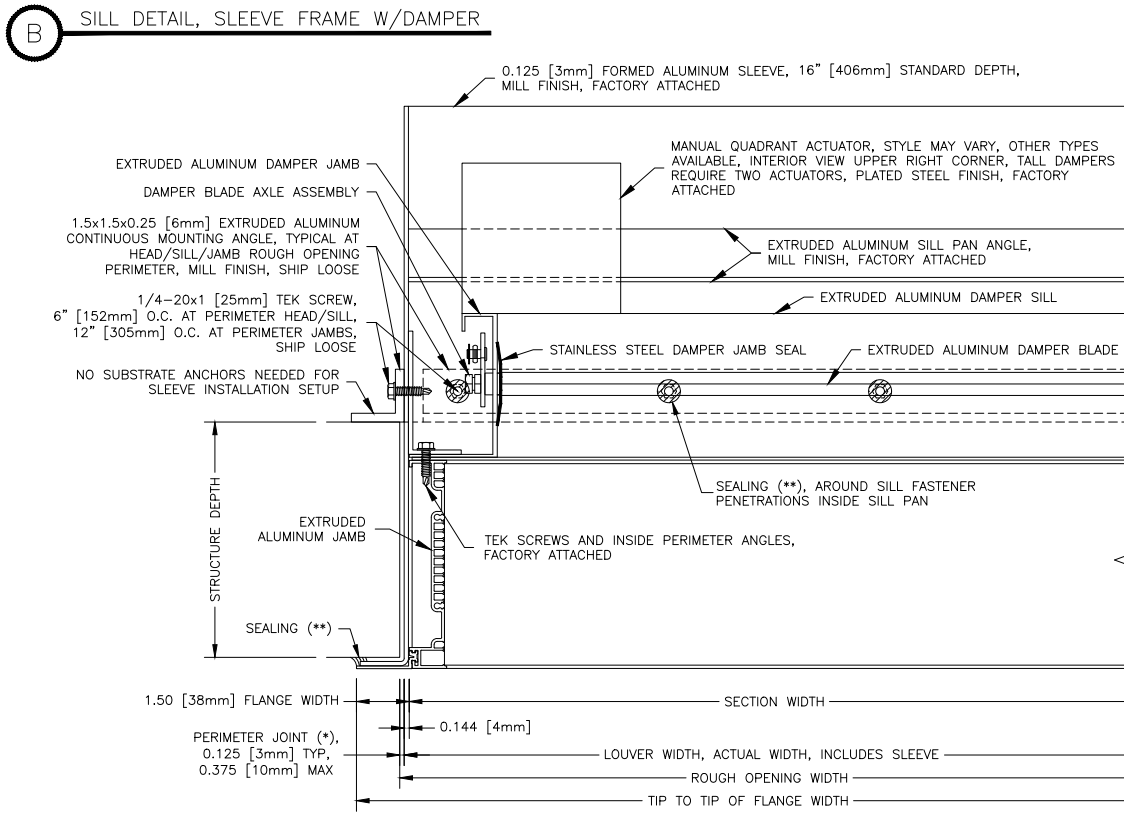
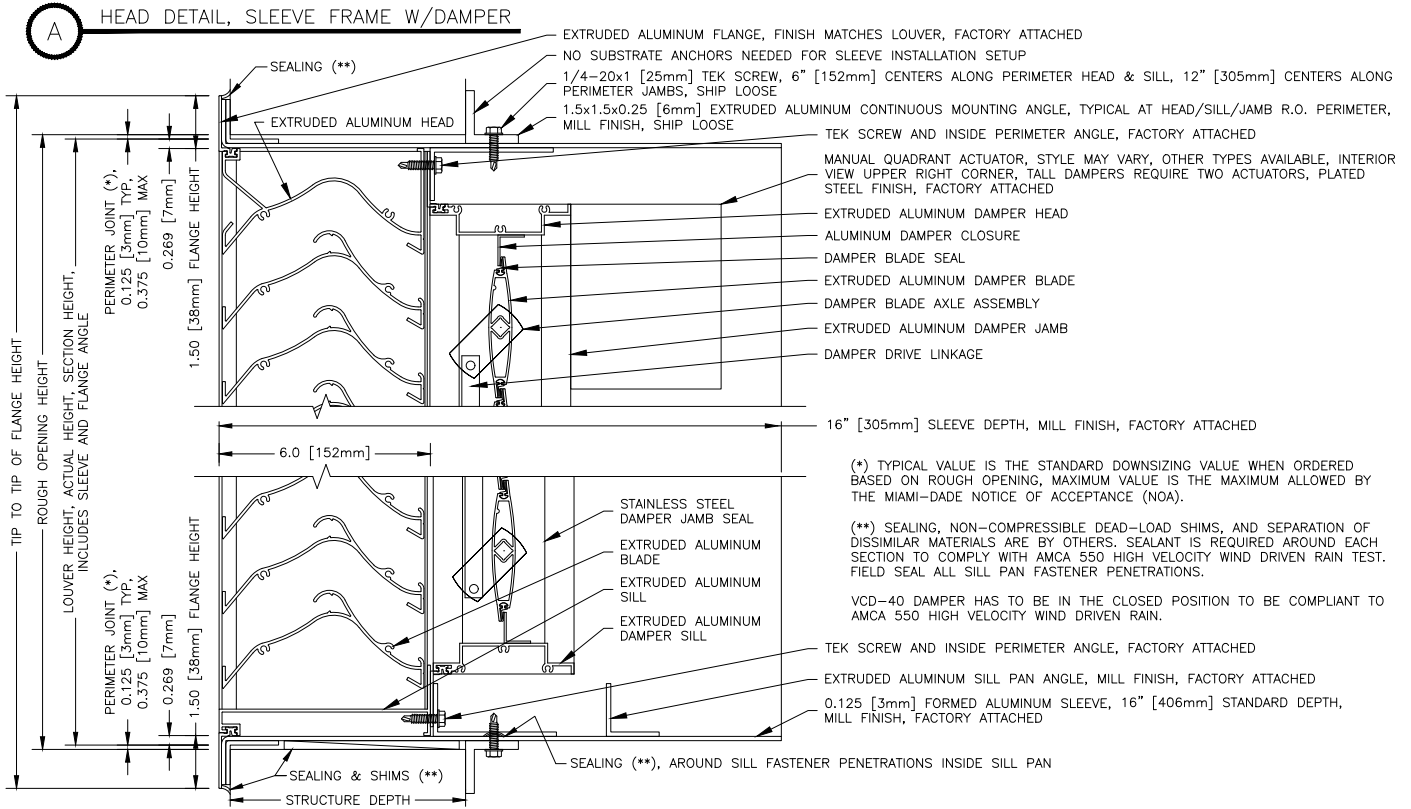


**Maximum Single Section Rough Opening Size**  
36.75 in. W x 144.50 in. H

### Building Condition/Substrate Limitations

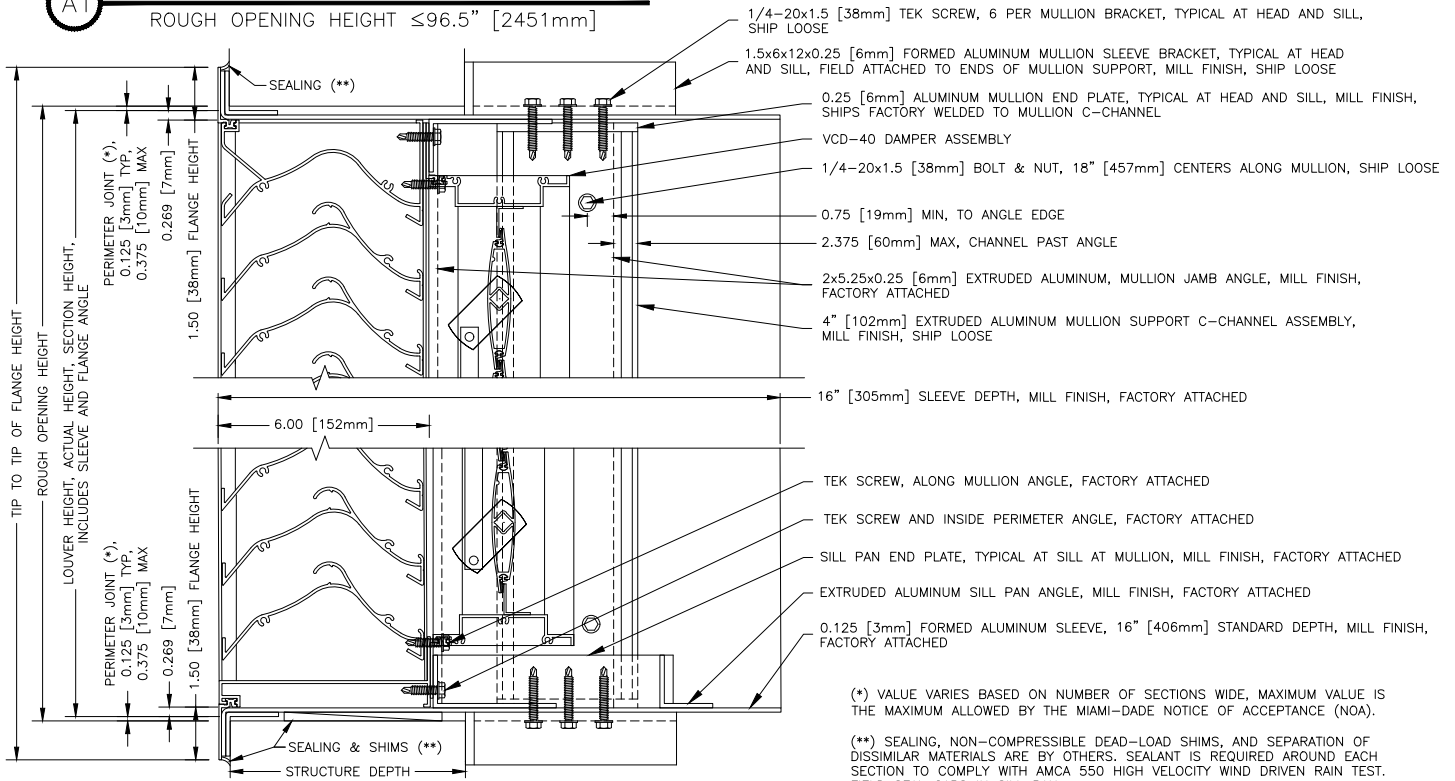
Model SCH601MD with Flange/Sleeve is qualified for installation into any substrate that can withstand the loads transferred to by the louver, including but not limited to concrete/masonry, aluminum, steel stud, and structural steel framed building conditions.

Flange/Sleeve Installation with VCD-40 Damper



Flange/Sleeve Installation with VCD-40 Damper

**A1** HEAD DETAIL, MULLION, SLEEVE FRAME W/DAMPER  
ROUGH OPENING HEIGHT  $\leq 96.5"$  [2451mm]

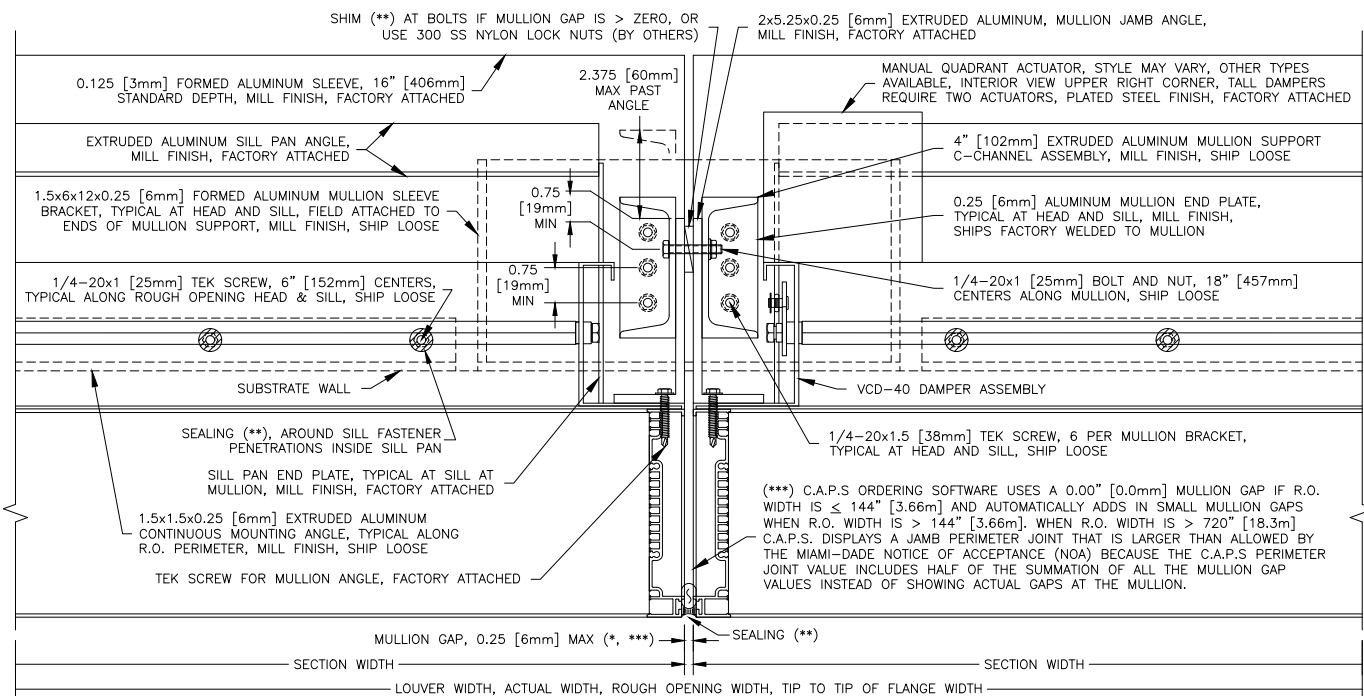


(\*) VALUE VARIES BASED ON NUMBER OF SECTIONS WIDE, MAXIMUM VALUE IS THE MAXIMUM ALLOWED BY THE MIAMI-DADE NOTICE OF ACCEPTANCE (NOA).

(\*\*) SEALING, NON-COMPRESSIBLE DEAD-LOAD SHIMS, AND SEPARATION OF DISSIMILAR MATERIALS ARE BY OTHERS. SEALANT IS REQUIRED AROUND EACH SECTION TO COMPLY WITH AMCA 550 HIGH VELOCITY WIND DRIVEN RAIN TEST. FIELD SEAL GAPS IN SILL PAN.

VCD-40 DAMPER HAS TO BE IN THE CLOSED POSITION TO BE COMPLIANT TO AMCA 550 HIGH VELOCITY WIND DRIVEN RAIN.

**B1** SILL DETAIL, MULLION, SLEEVE FRAME W/DAMPER  
ROUGH OPENING HEIGHT  $\leq 96.5"$  [2451mm]

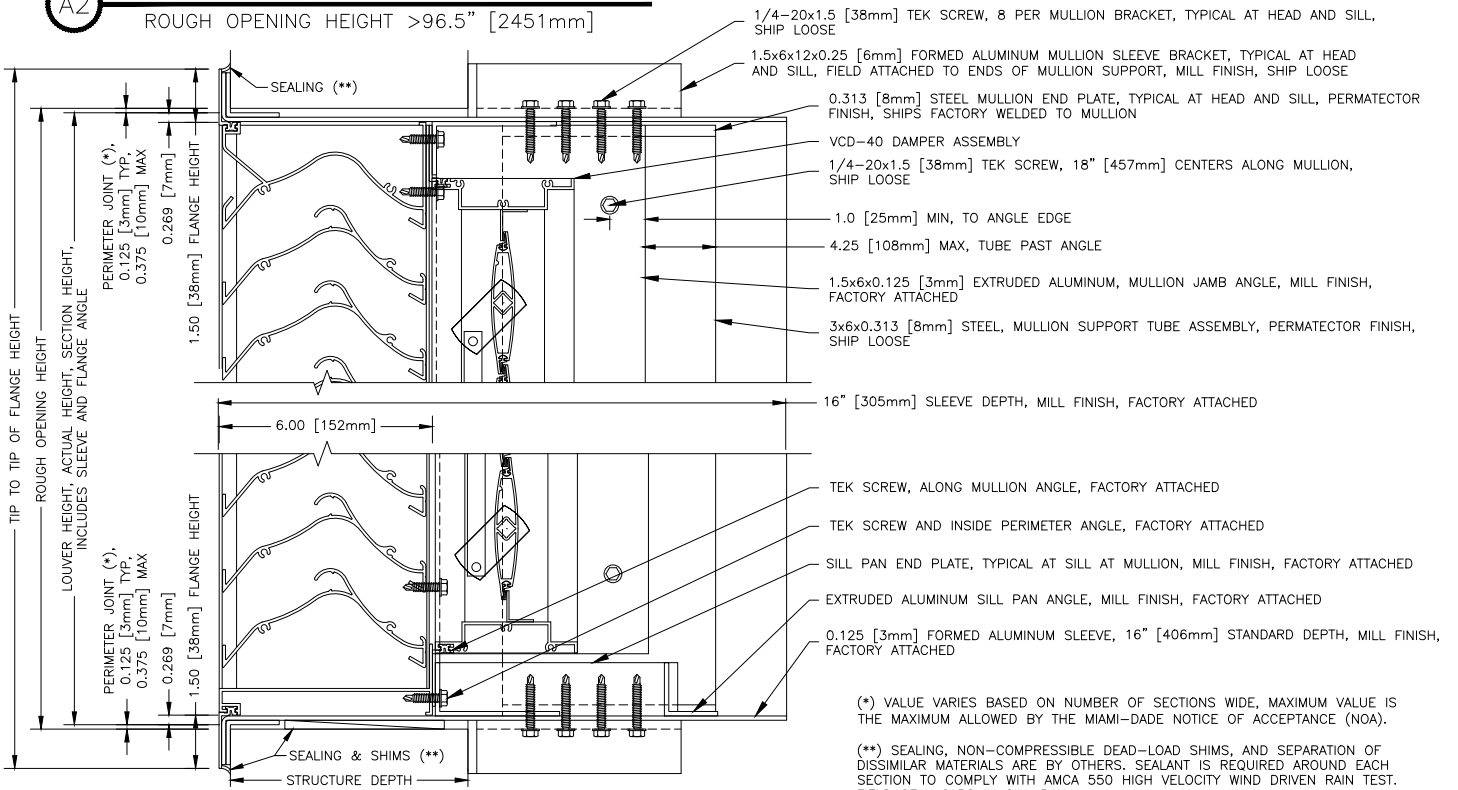


(\*\*\*) C.A.P.S ORDERING SOFTWARE USES A 0.00\"/>

**E1** MULLION DETAIL, SLEEVE FRAME W/DAMPER  
ROUGH OPENING HEIGHT  $\leq 96.5"$  [2451mm]

Flange/Sleeve Installation with VCD-40 Damper

**A2** HEAD DETAIL, MULLION, SLEEVE FRAME W/DAMPER  
ROUGH OPENING HEIGHT >96.5" [2451mm]

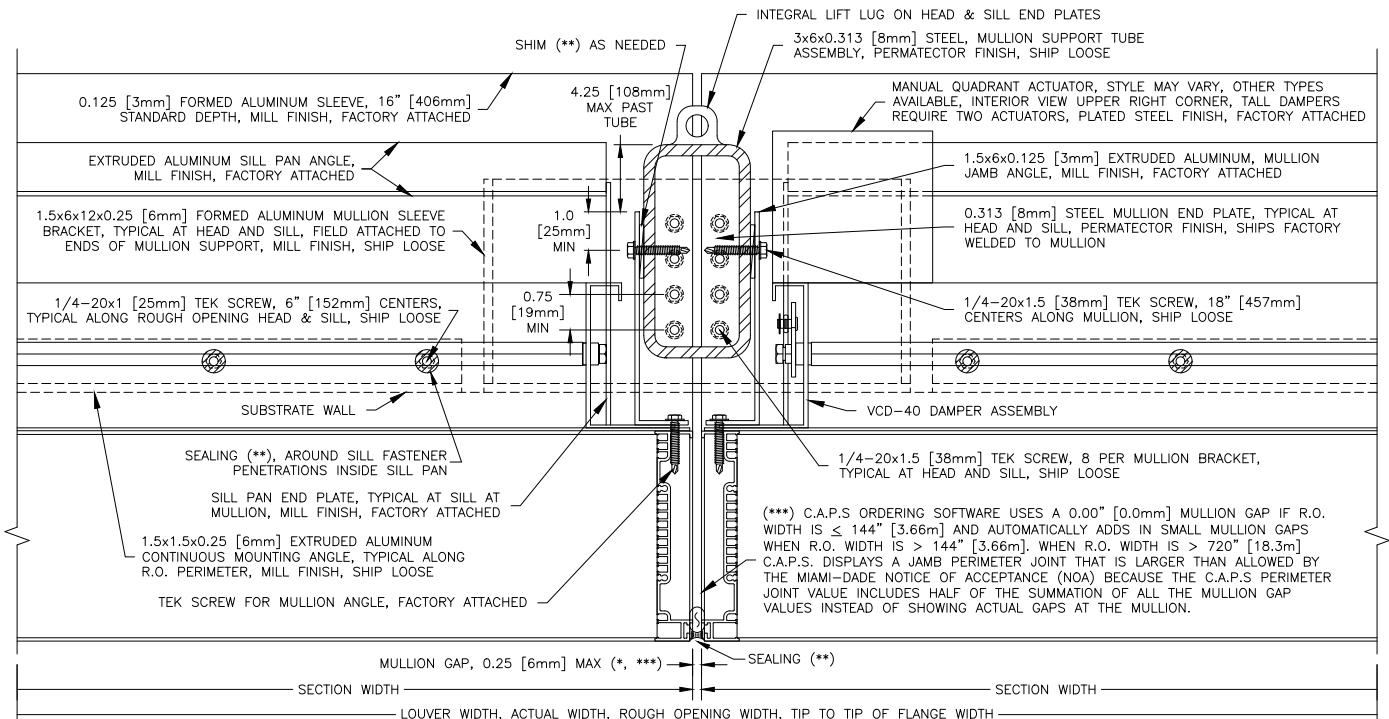


(\*) VALUE VARIES BASED ON NUMBER OF SECTIONS WIDE, MAXIMUM VALUE IS THE MAXIMUM ALLOWED BY THE MIAMI-DADE NOTICE OF ACCEPTANCE (NOA).

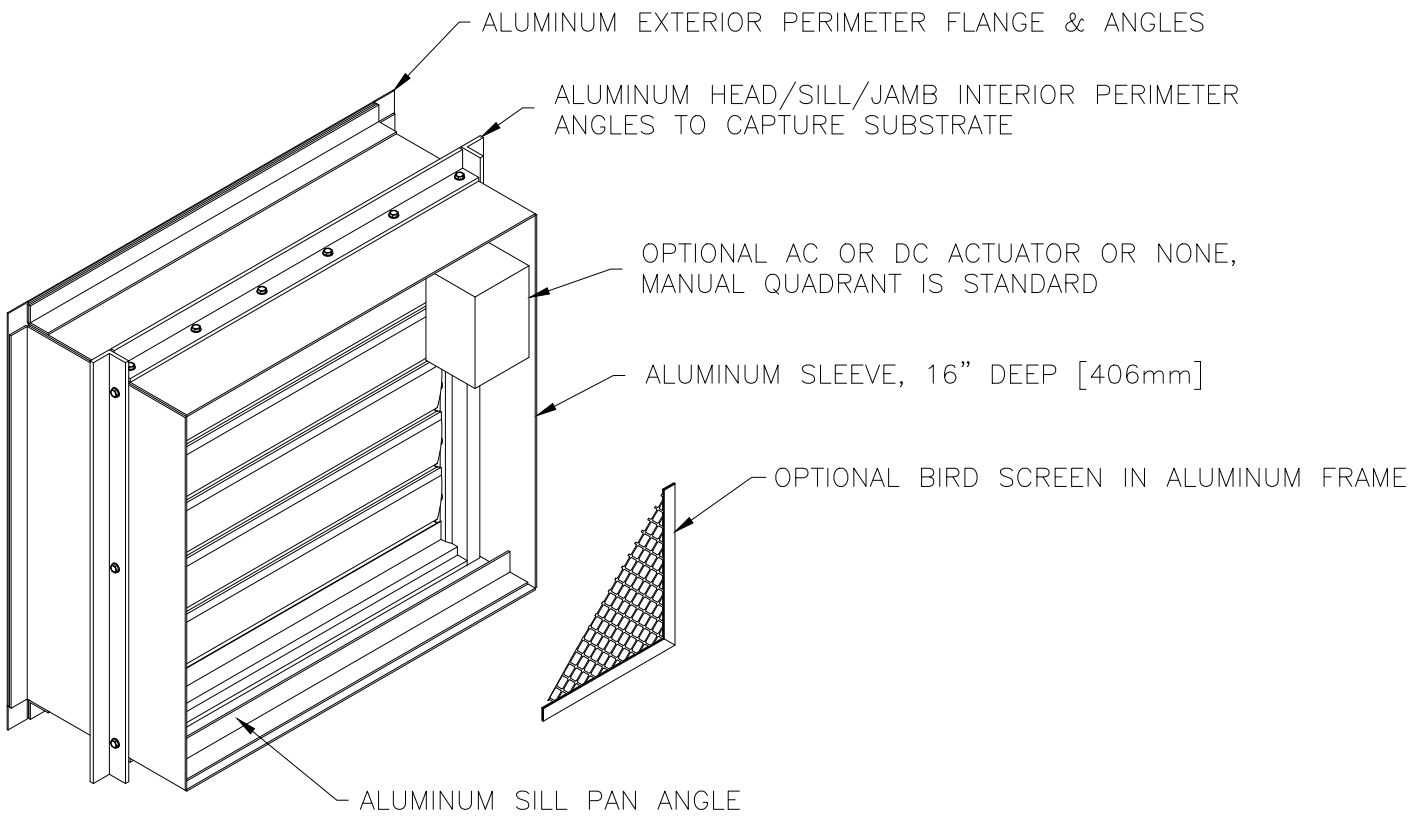
(\*\*) SEALING, NON-COMPRESSIBLE DEAD-LOAD SHIMS, AND SEPARATION OF DISSIMILAR MATERIALS ARE BY OTHERS. SEALANT IS REQUIRED AROUND EACH SECTION TO COMPLY WITH AMCA 550 HIGH VELOCITY WIND DRIVEN RAIN TEST. FIELD SEAL GAPS IN SILL PAN.

VCD-40 DAMPER HAS TO BE IN THE CLOSED POSITION TO BE COMPLIANT TO AMCA 550 HIGH VELOCITY WIND DRIVEN RAIN.

**B2** SILL DETAIL, MULLION, SLEEVE FRAME W/DAMPER  
ROUGH OPENING HEIGHT >96.5" [2451mm]



**E2** MULLION DETAIL, SLEEVE FRAME W/DAMPER  
ROUGH OPENING HEIGHT >96.5" [2451mm]

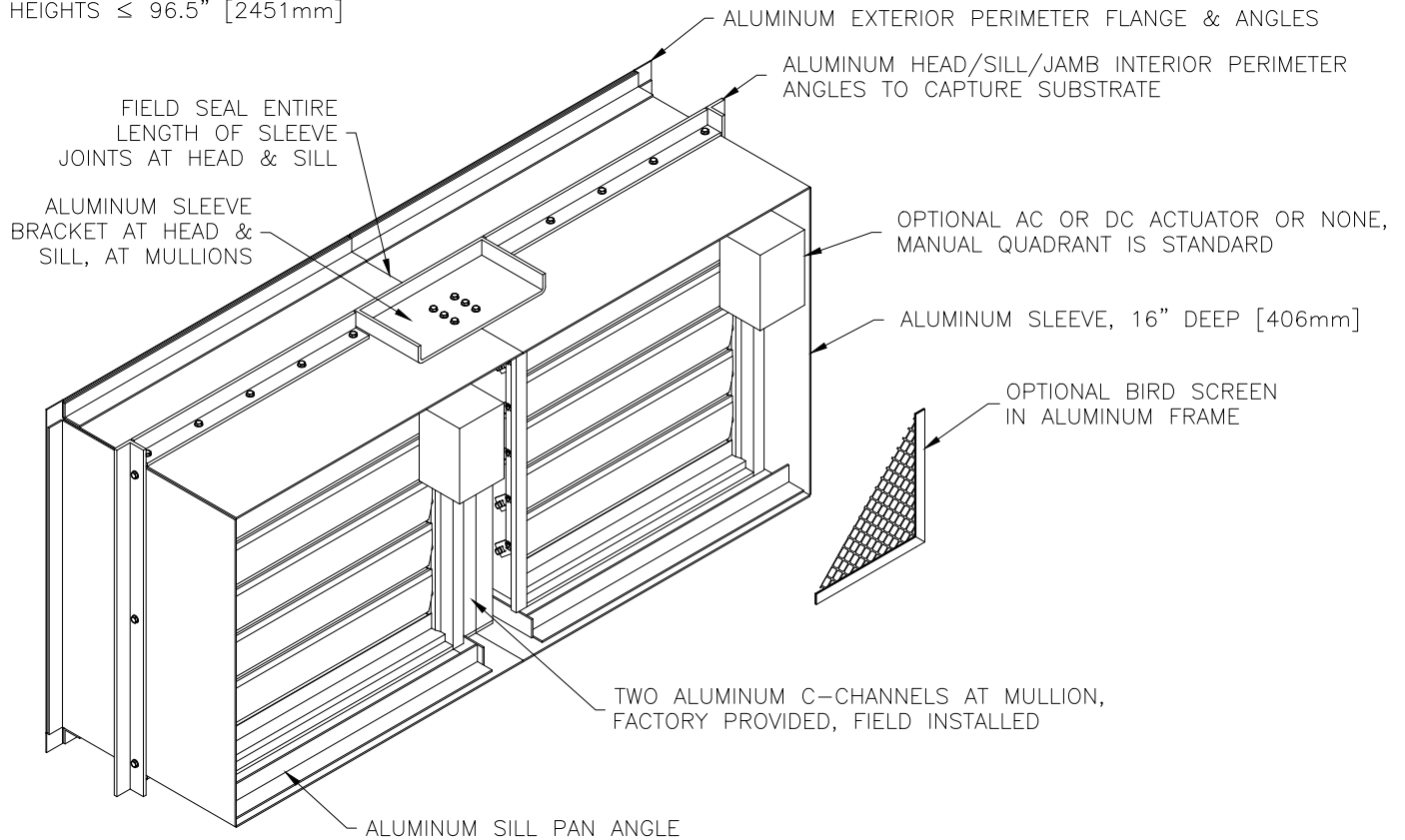


**Structure Depth**

- Min. structure depth 8.0 in.
- Max. structure depth 10.5 in.

Flange/Sleeve Installation with VCD-40 Damper

BELOW CONFIGURATION IS FOR ROUGH OPENING  
HEIGHTS  $\leq 96.5"$  [2451mm]

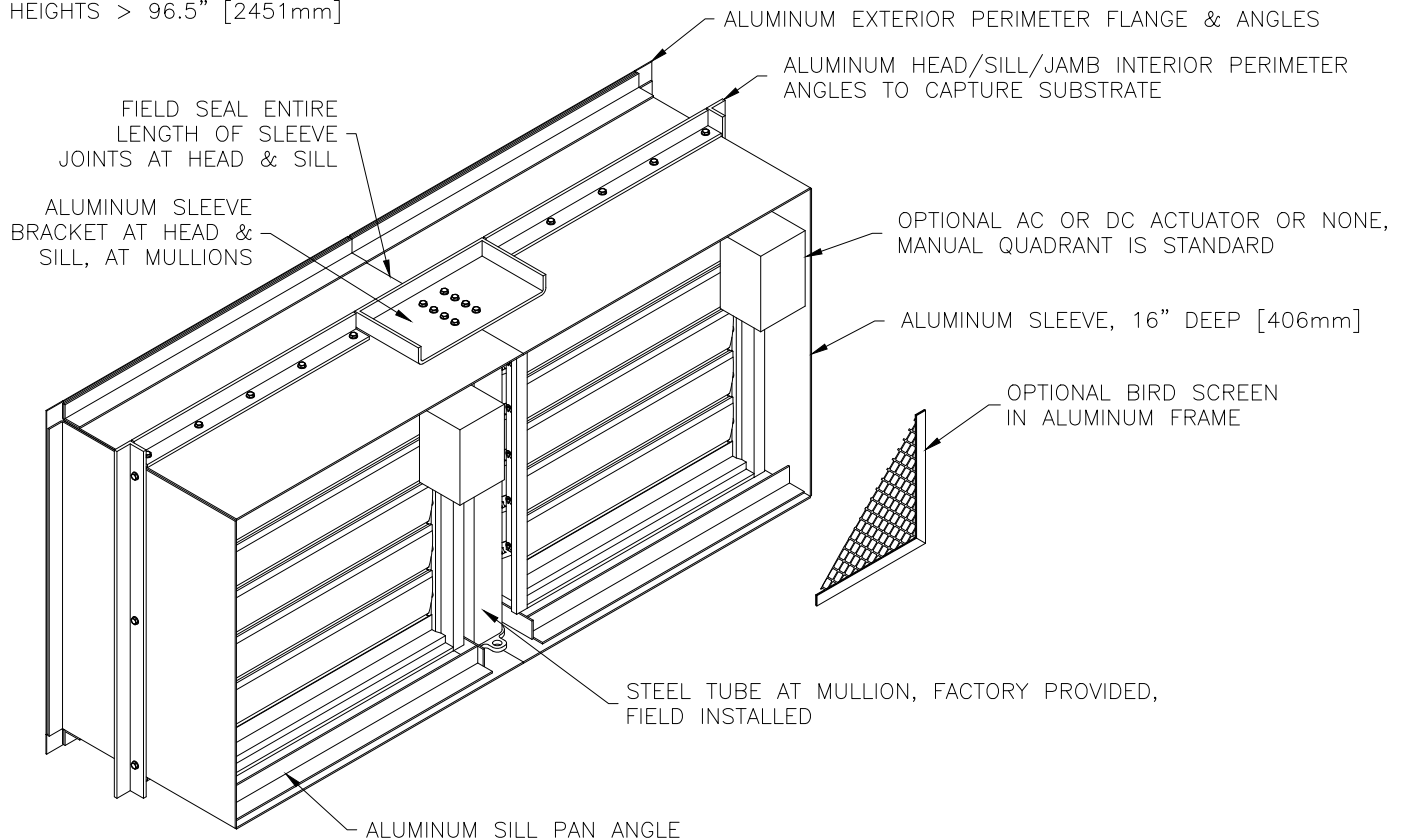


**Structure Depth**

- Min. structure depth 8.0 in.
- Max. structure depth 11.5 in.

Flange/Sleeve Installation with VCD-40 Damper

BELOW CONFIGURATION IS FOR ROUGH OPENING  
HEIGHTS > 96.5" [2451mm]



**Structure Depth**

- Min. structure depth 8.0 in.
- Max. structure depth 13.25 in.



P.O. Box 410, 525 Western Road, Schofield, WI 54476-0410 USA  
715.841.8757 • fax 715.841.8773 • www.airolite.com

*As a result of our commitment to continuous improvement, Airlite reserves the right to change specifications without notice.*