



## Mixed Flow Hooded Rooftop Fans

Model RSQ direct drive fans take performance through the roof. Offering unparalleled installation flexibility and ease of maintenance, these compact fans are engineered for both roof supply and exhaust using our latest mixed flow technology—delivering both exceptional efficiency and quiet operation. Supply configurations can be equipped with washable aluminum filters or birdscreen while exhaust configurations are provided with birdscreen only. Elevate your projects with the RSQ.

### SIZES AND CONFIGURATIONS

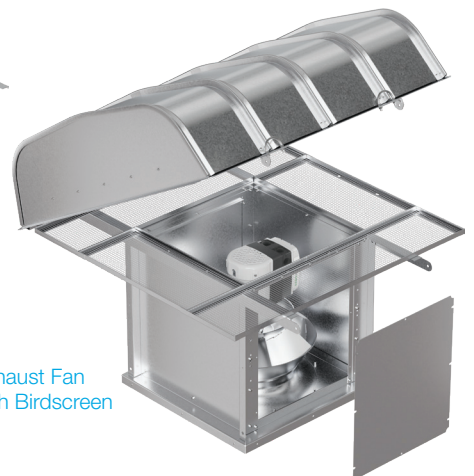
- Direct drive sizes 7 - 33
- Supply available with birdscreen as standard or optional 1-inch washable aluminum filters
- Exhaust available with birdscreen as standard

### PERFORMANCE

- Supply: Up to 27,100 cfm
- Exhaust: Up to 25,200 cfm
- Up to 3 in. of static pressure



Supply Fan with  
Optional Filters



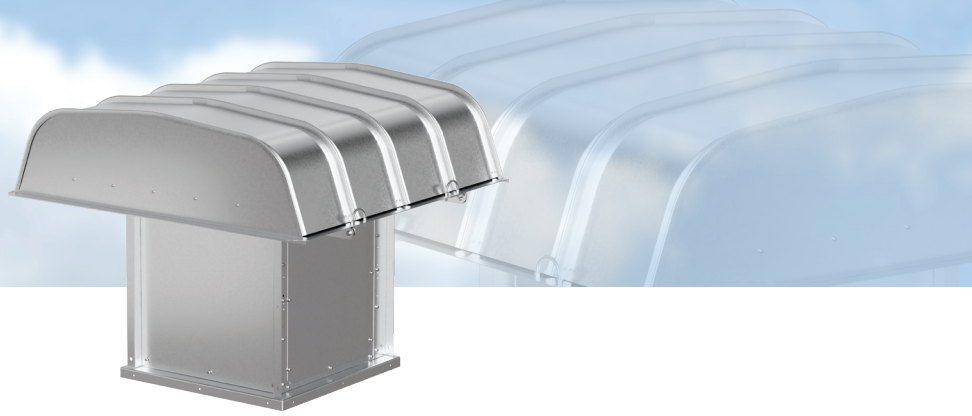
Exhaust Fan  
with Birdscreen

## PRIMARY APPLICATIONS

Filtered/Unfiltered Roof Supply | Roof Exhaust  
Clean Air Environments | Low Sound | High Efficiency

# RSQ | Mixed Flow

ROOF SUPPLY OR EXHAUST FANS



Roof Curbs

Vari-Green®  
Motors and  
Controls

Backdraft  
and Control  
Dampers

Aluminum Filters

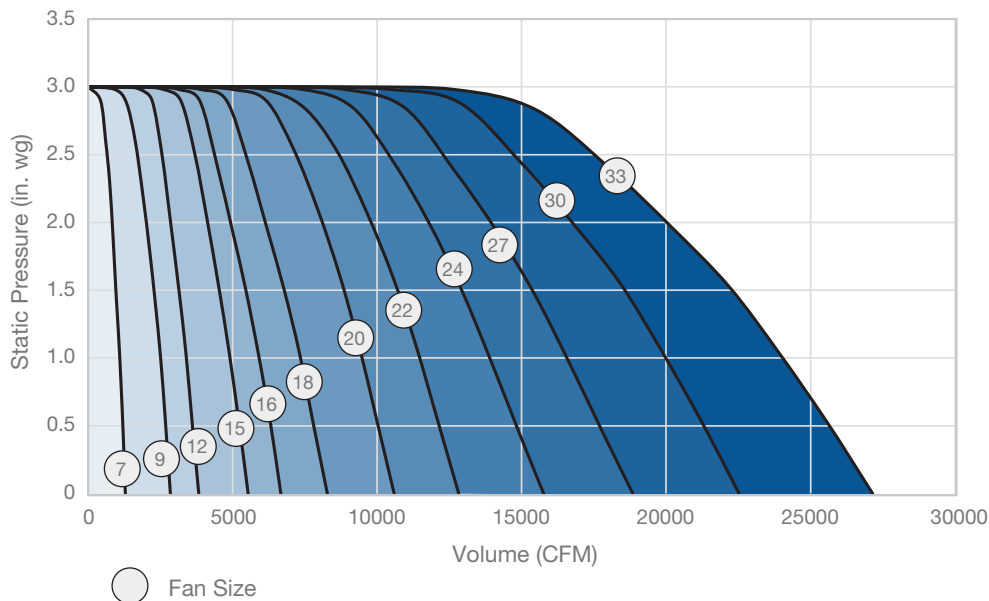
## FEATURES AND BENEFITS

- Mixed flow wheel improves airflow and efficiency while reducing sound and footprint
- Panels on either side of the unit provide quick access and inspection
- Totally enclosed motors eliminate the need for a motor cover and improve motor access
- Vari-Green® motor offering up to and including 10 hp
- Mounted and wired NEMA-3R disconnect
- Birdscreen is provided as standard with the option to switch to 1-inch aluminum filters on supply units
- Fabra style hoods constructed of galvanized steel are arched and precision roll-formed for strength and weather tightness (ships knocked down for field installation)
- Lifting lugs provide easy rigging and installation

## OPTIONS AND ACCESSORIES

- 1-inch aluminum filters (supply only)
- Roof curbs and accessories
- Aluminum hood
- Spark B & C resistant construction
- Backdraft and control dampers
- Duct adapters
- Decorative and protective coatings
- Disconnect switches
- Multiple control options

## PERFORMANCE



UL/cUL 705  
Listed for Electrical  
File no E40001

**Specify with Confidence. Specify Greenheck.**  
Connect with your local mechanical representative to learn more.

