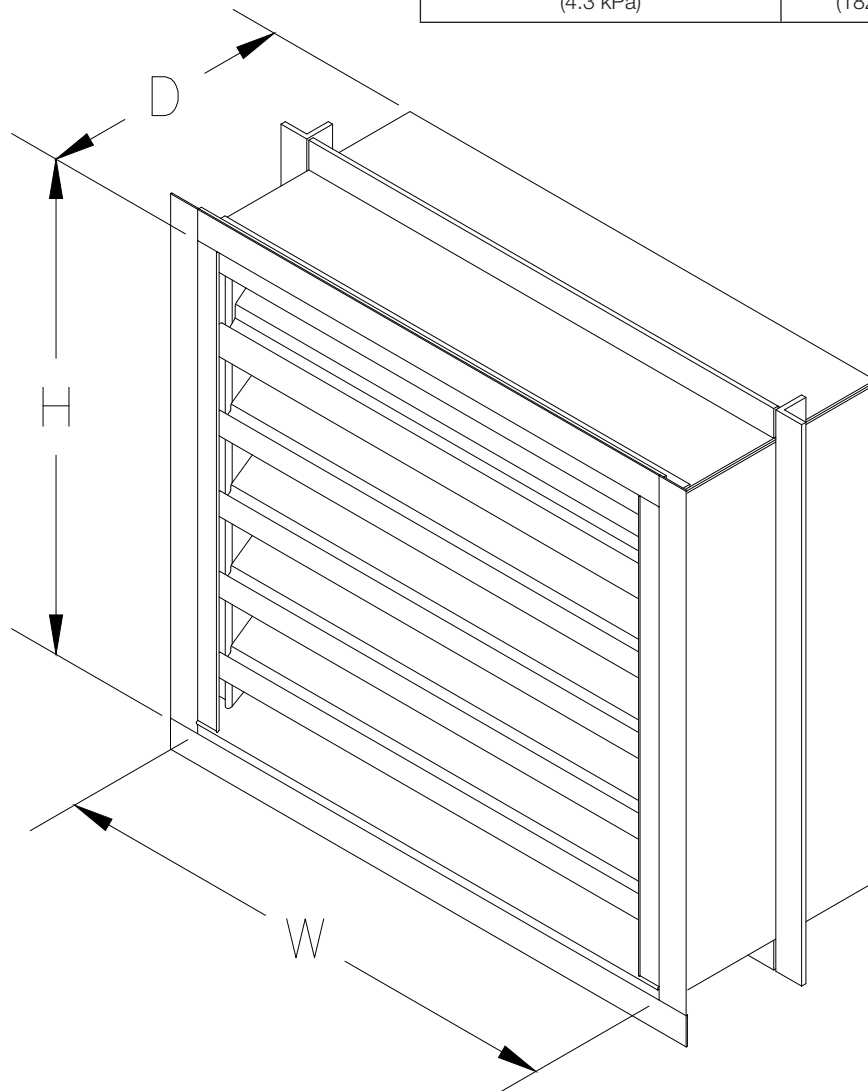


Installation, Operation and Maintenance Manual

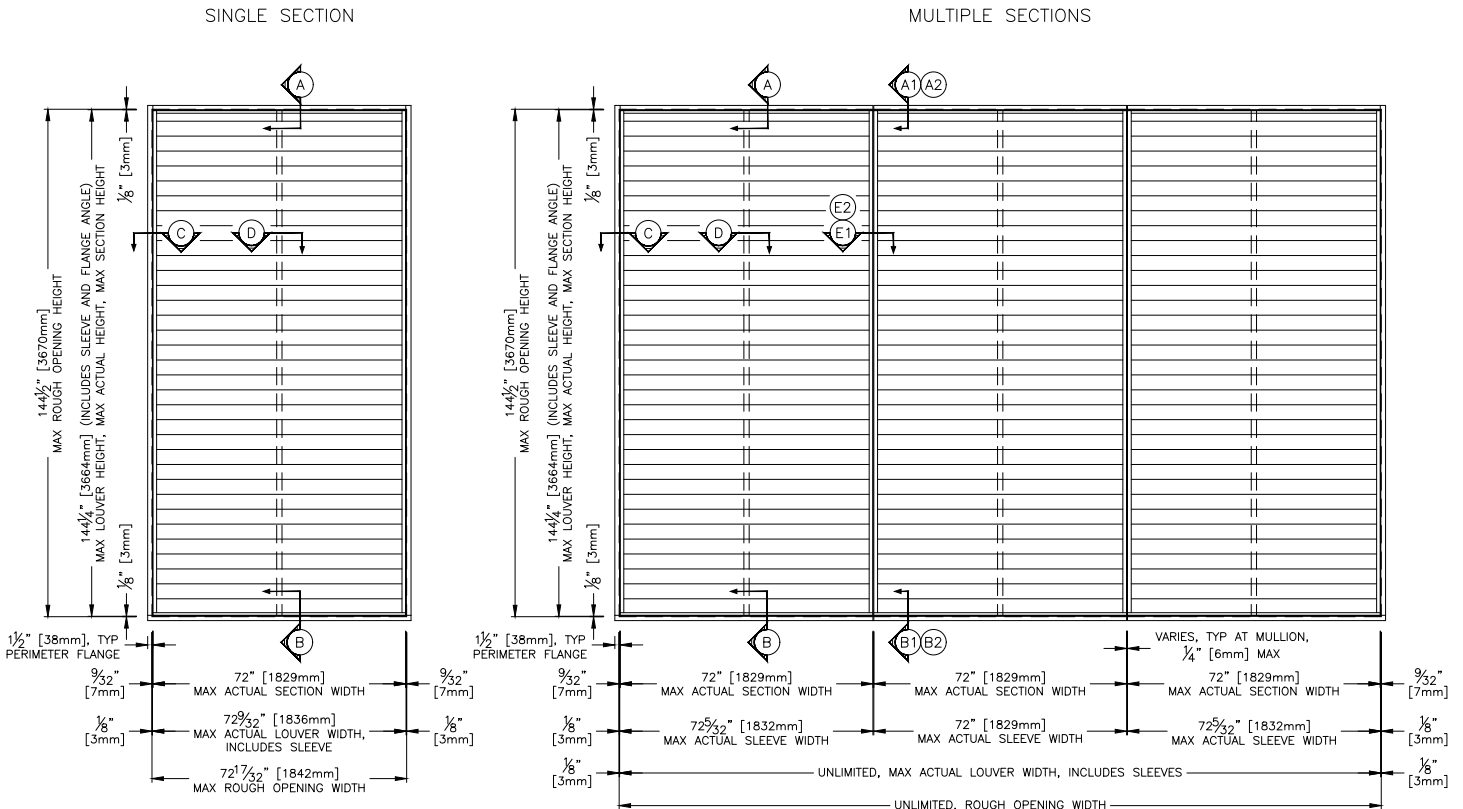
Please read and save these instructions for future reference. Read carefully before attempting to assemble, install, operate or maintain the product described. Protect yourself and others by observing all safety information. Failure to comply with these instructions will result in voiding of the product warranty and may result in personal injury and/or property damage.

Wind Load Table	
Design Pressure Rating	Maximum Single Section Size
+/- 150 PSF (7.2 kPa)	43 in. W x 144 in. H (1092 mm W x 3658 mm H)
+/- 130 (6.2 kPa)	49.5 in. W x 144 in. H (1257 mm W x 3658 mm H)
+/- 105 (5.0 kPa)	61.5 in. W x 144 in. H (1562 mm W x 3658 mm H)
+/- 90 (4.3 kPa)	72 in. W x 144 in. H (1829mm W x 3658 mm H)



Maximum Size and Installation Information

Model ESD-635D is a Miami-Dade Qualified and Florida Product Approved louver and must be installed in accordance with the installation instructions shown herein. Model ESD-635D with Flange/Sleeve is qualified for installation into any substrate that can withstand the loads transferred to by the louver, including but not limited to concrete/masonry, aluminum, steel stud, and structural steel framed building conditions. The maximum design wind load for model ESD-635D varies depending on configuration (reference wind load table). The maximum single section rough opening width is 72.75 in. The maximum single section rough opening height is 144.50 in. While the maximum rough opening height is limited to 144.50 in., the rough opening width is limited to 1,000 in. as multiple sections may be installed side by side in accordance with installation instructions.

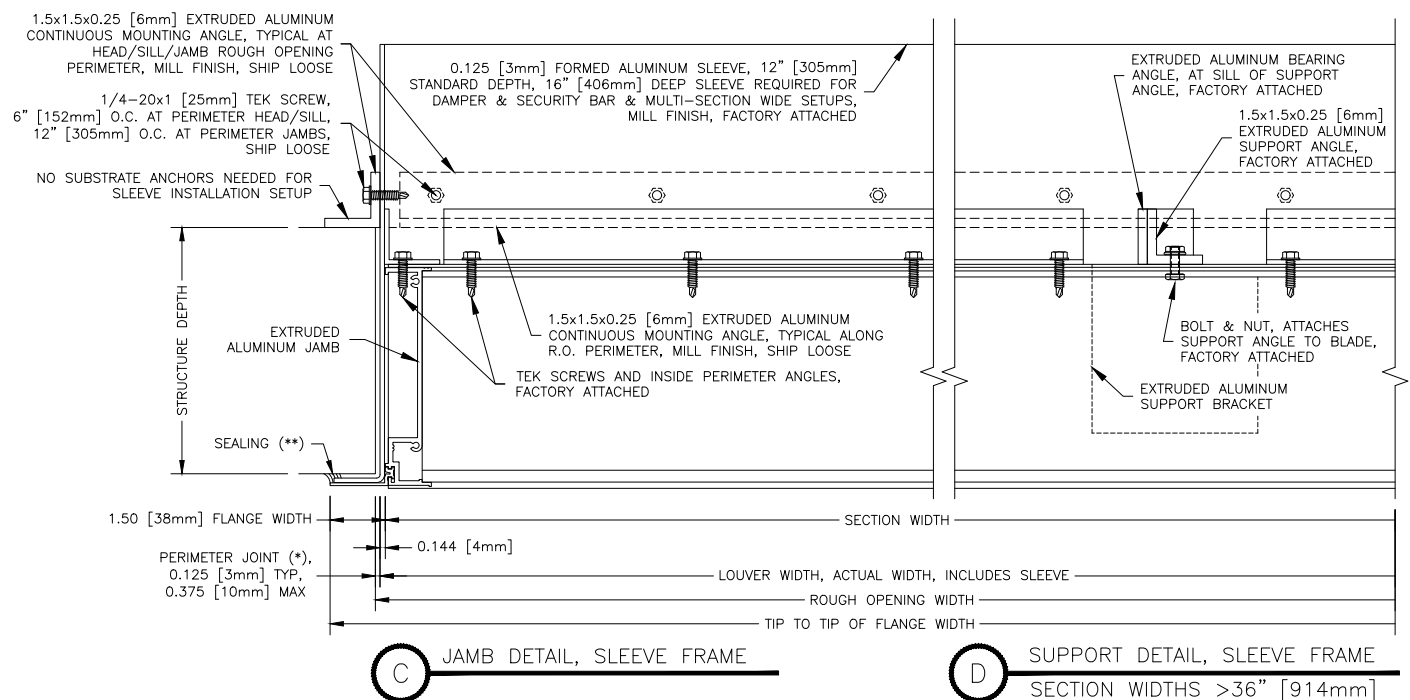
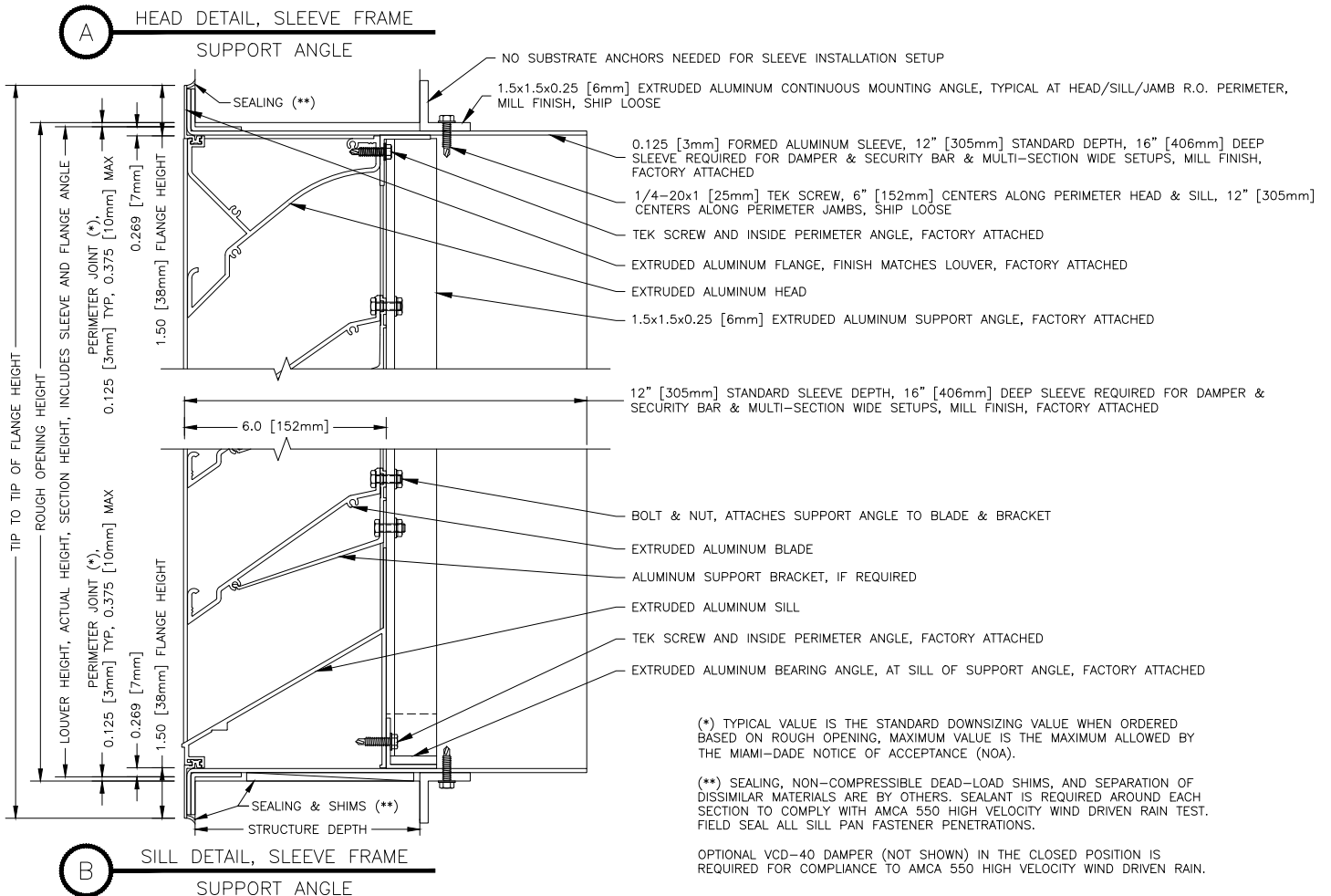


**Minimum Rough
Opening Size**
12 in. W x 12 in. H

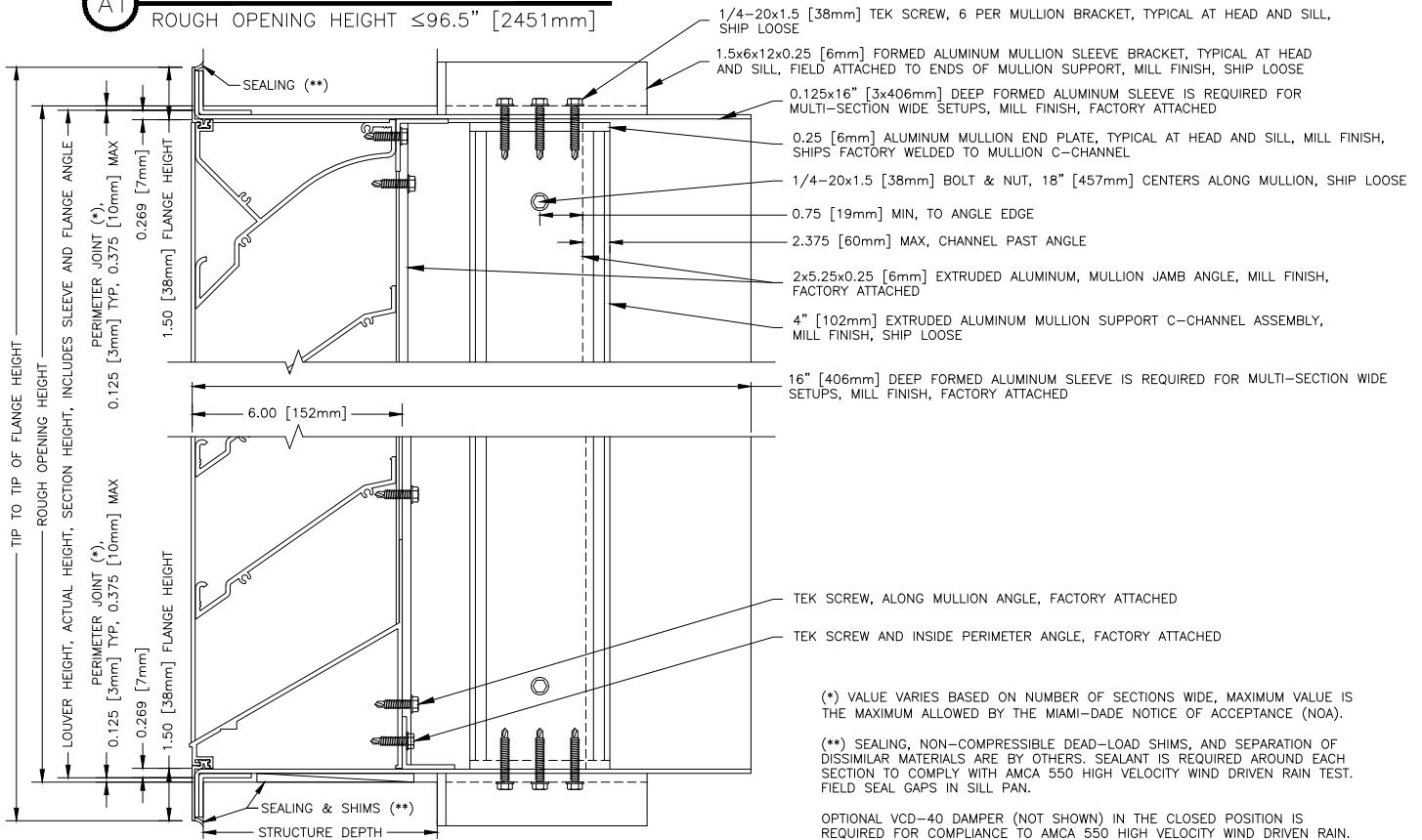
**Maximum Single Section
Rough Opening Size**
72.75 in. W x 144.50 in. H

Building Condition/Substrate Limitations

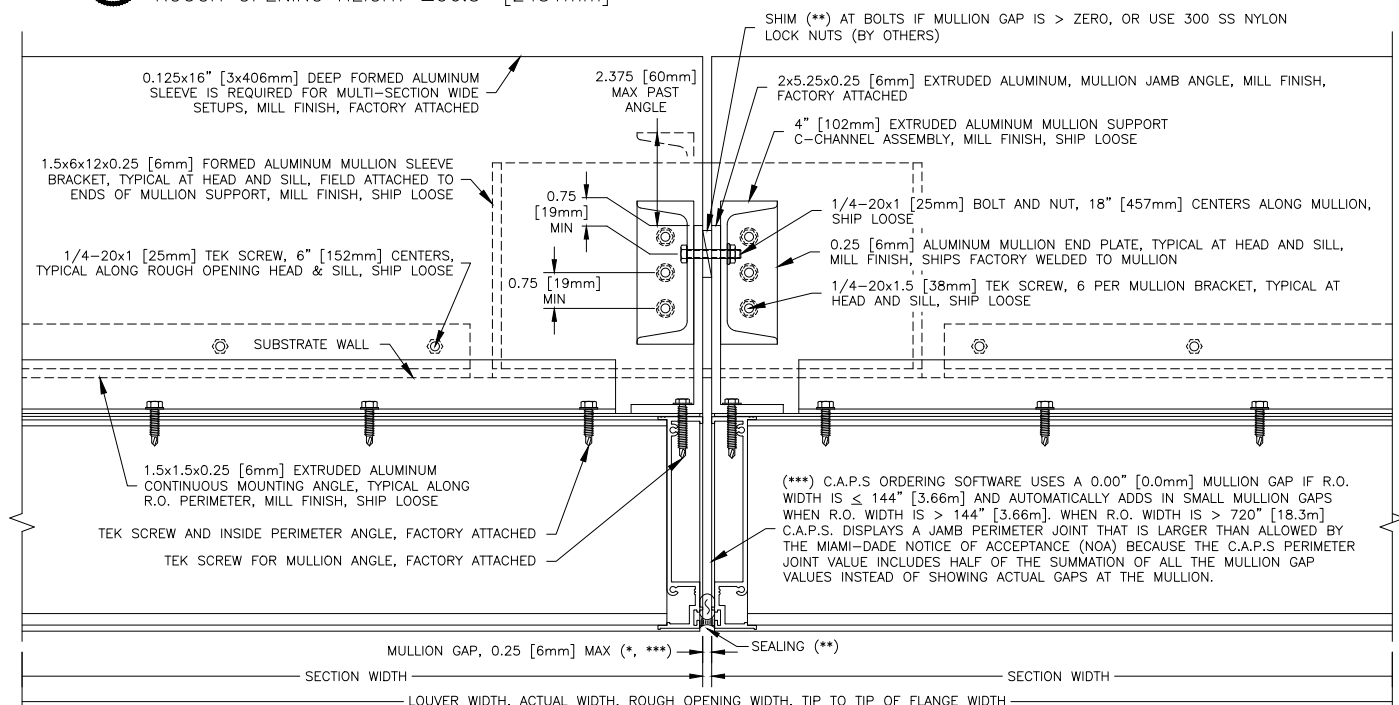
Model ESD-635D with Flange/Sleeve is qualified for installation into any substrate that can withstand the loads transferred to by the louver, including but not limited to concrete/masonry, aluminum, steel stud, and structural steel framed building conditions.



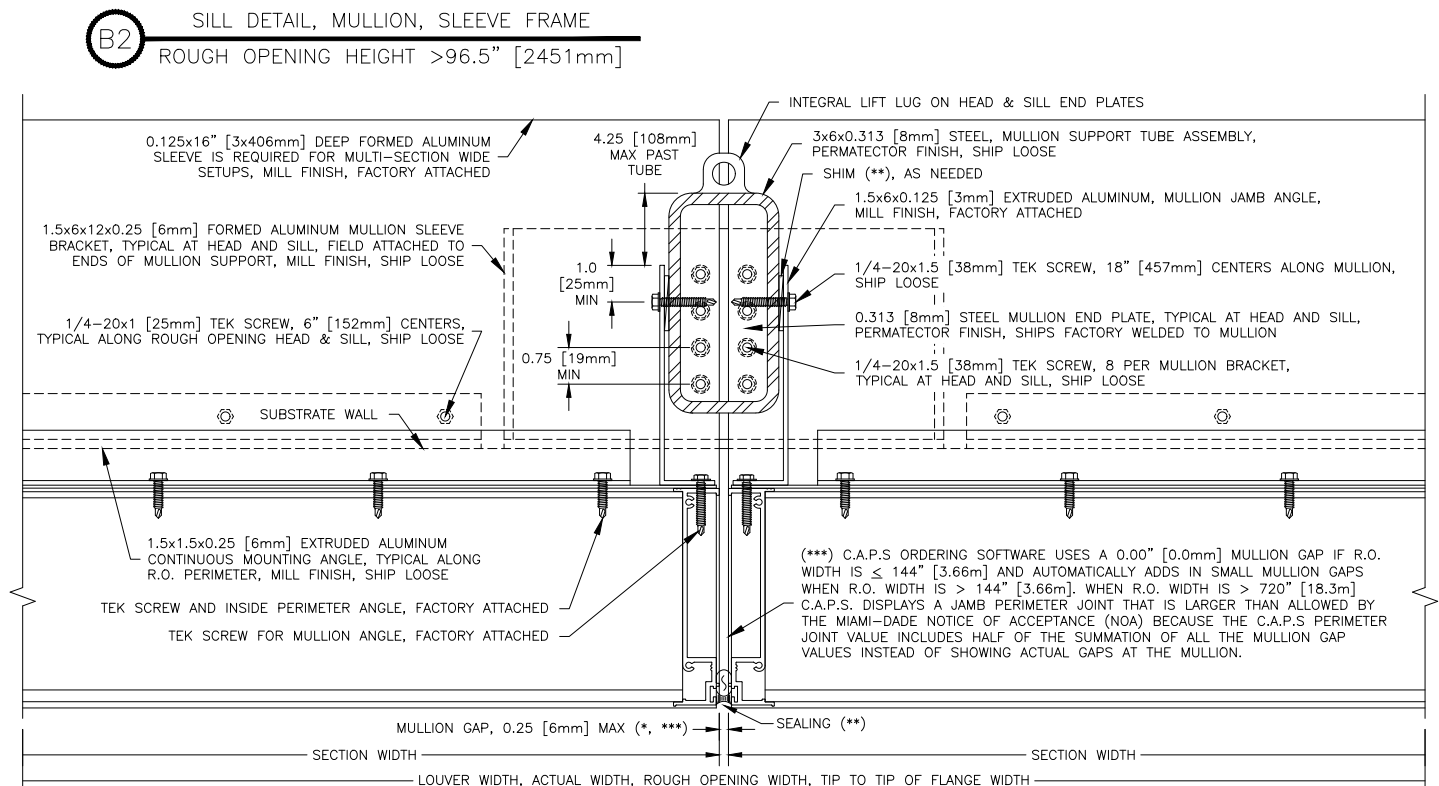
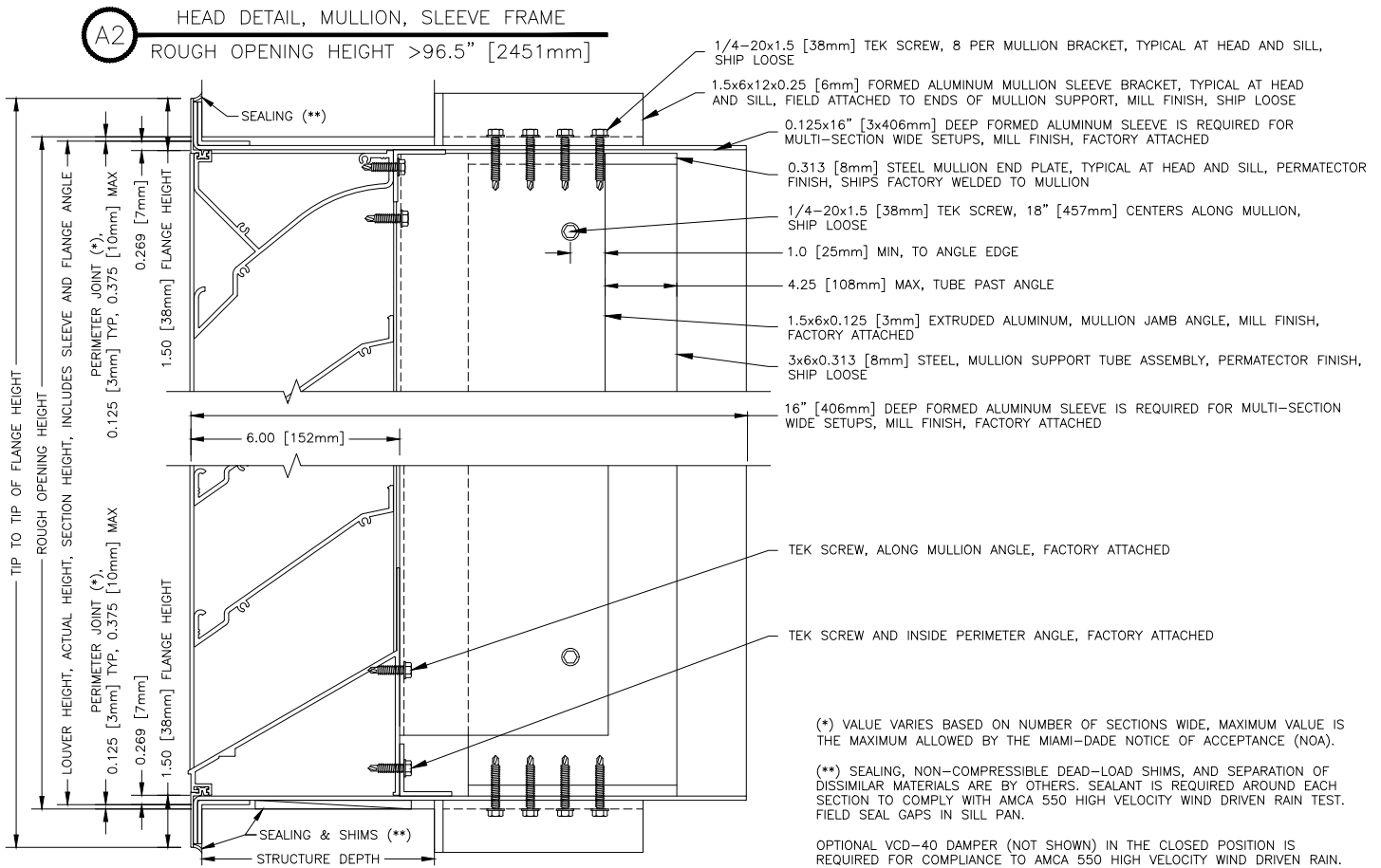
A1 HEAD DETAIL, MULLION, SLEEVE FRAME
ROUGH OPENING HEIGHT $\leq 96.5"$ [2451mm]

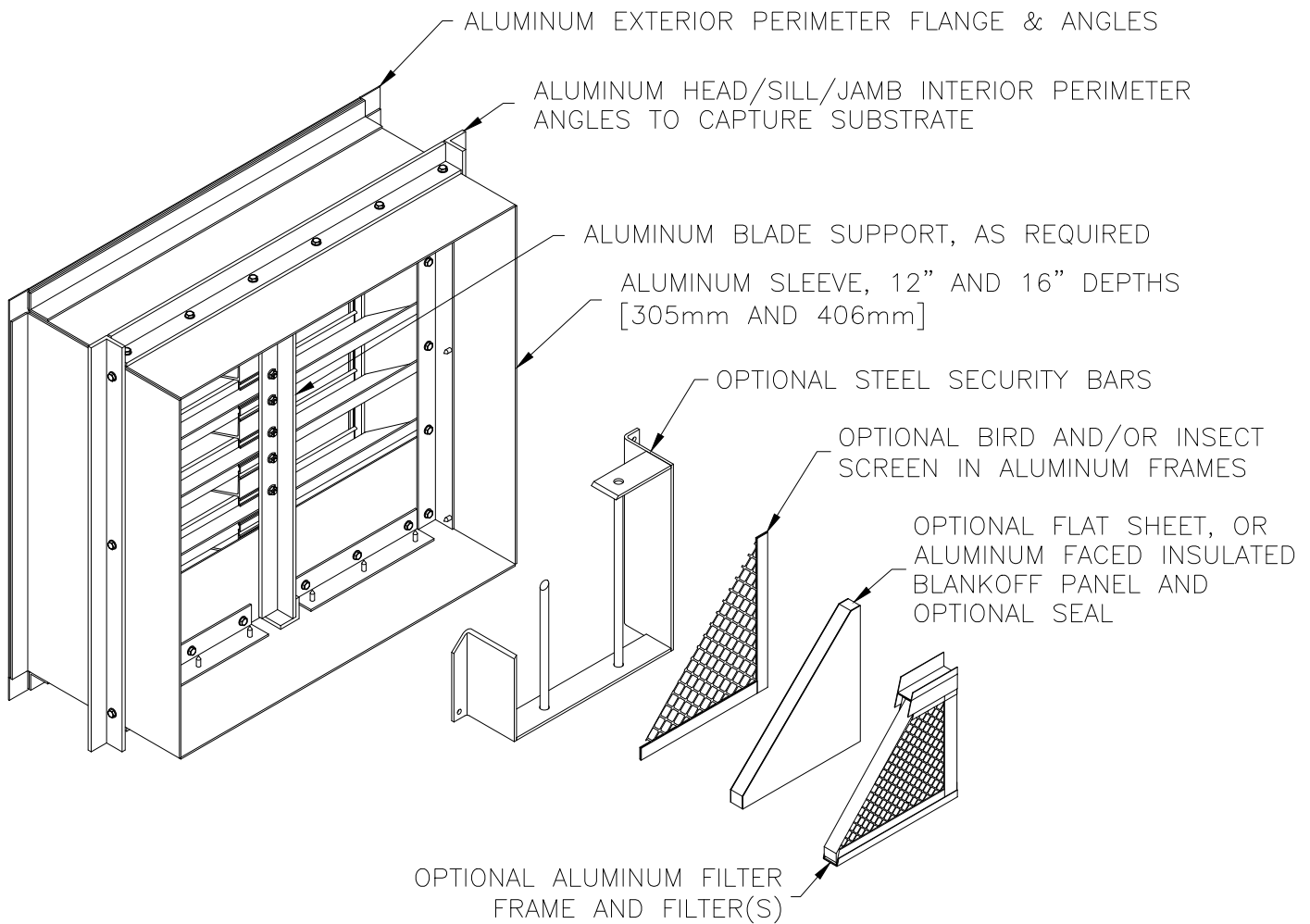


B1 SILL DETAIL, MULLION, SLEEVE FRAME
ROUGH OPENING HEIGHT $\leq 96.5"$ [2451mm]



E1 MULLION DETAIL, SLEEVE FRAME
ROUGH OPENING HEIGHT $\leq 96.5"$ [2451mm]

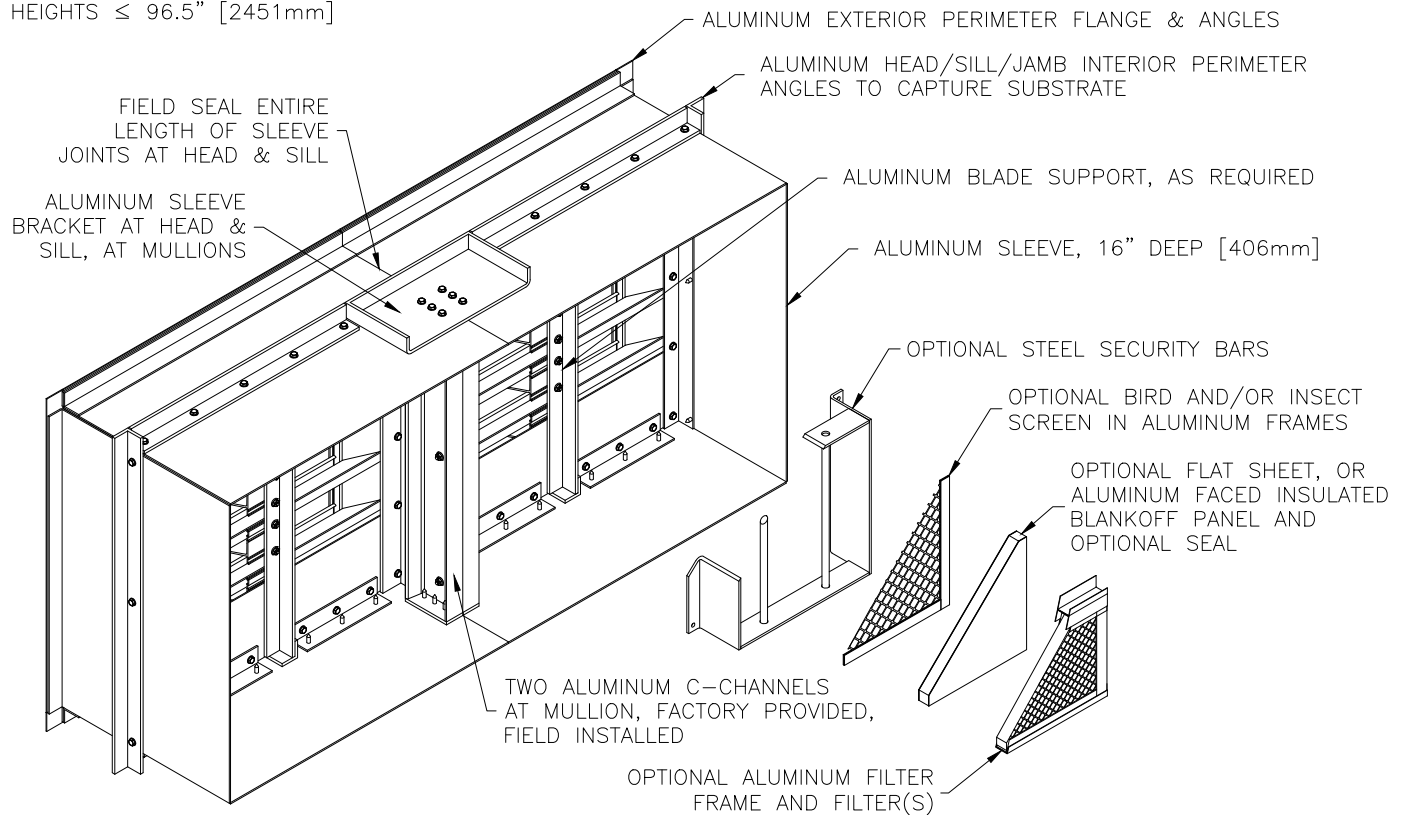




Structure Depth

- Min. structure depth 8.0 in.
- Max. structure depth 10.5 in.

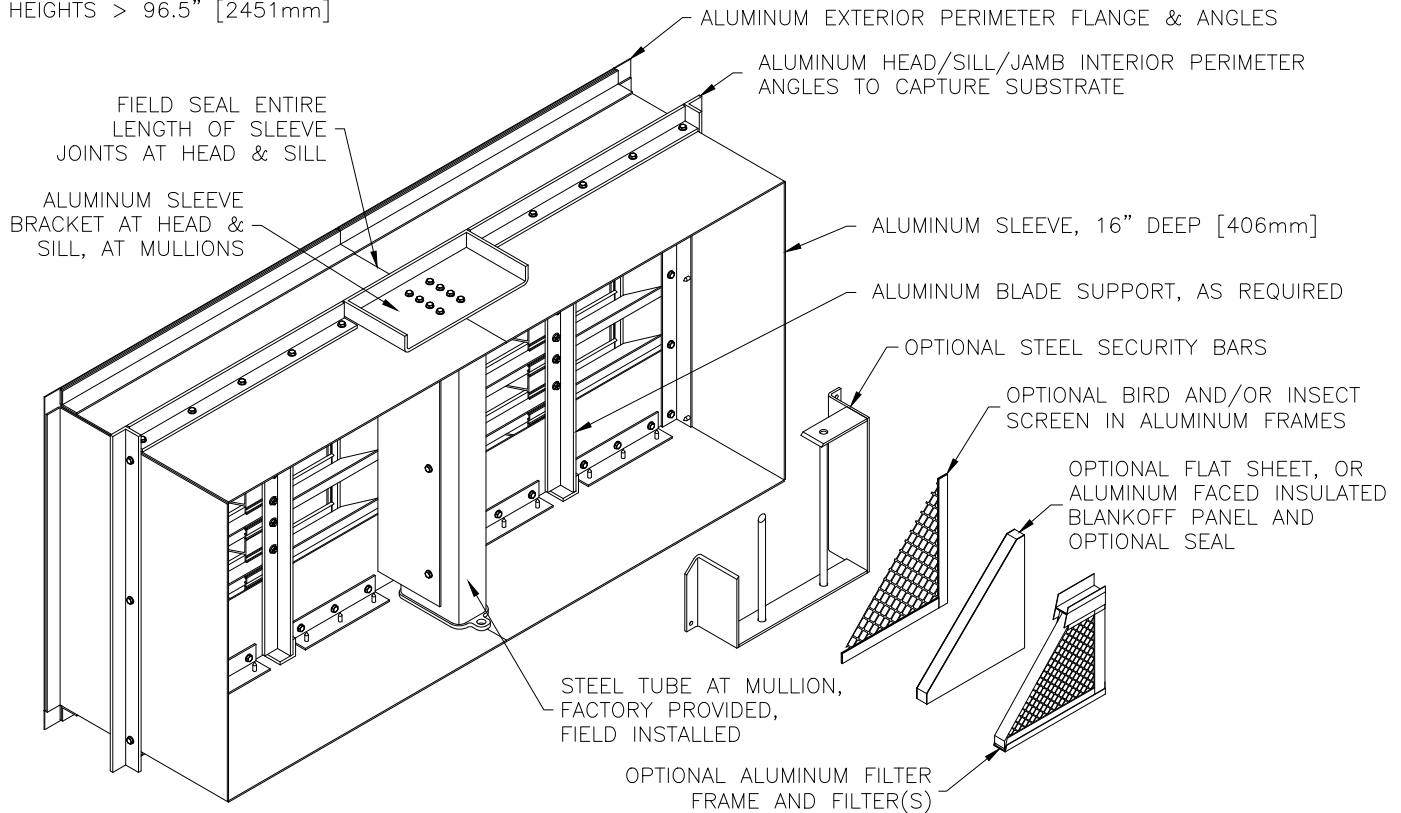
BELOW CONFIGURATION IS FOR ROUGH OPENING
 HEIGHTS $\leq 96.5"$ [2451mm]



Structure Depth

- Min. structure depth 8.0 in.
- Max. structure depth 11.5 in.

BELOW CONFIGURATION IS FOR ROUGH OPENING
HEIGHTS > 96.5" [2451mm]



Structure Depth

- Min. structure depth 8.0 in.
- Max. structure depth 13.25 in.

Our Commitment

As a result of our commitment to continuous improvement, Greenheck reserves the right to change specifications without notice.

Product warranties can be found online at Greenheck.com, either on the specific product page or in the literature section of the website at Greenheck.com/Resources/Library/Literature.

