



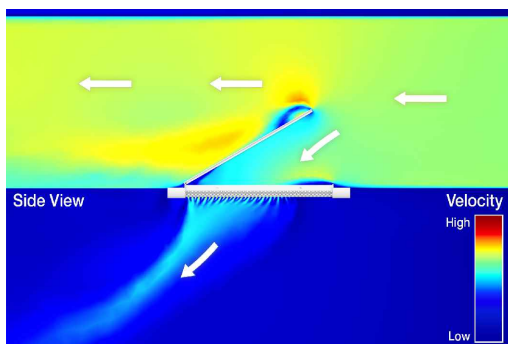
Product Features:

- Model SDPF-C offers a curved frame style that fits a specific duct diameter
- Available in steel or aluminum construction
- Units can come with air scoop for airflow adjustment
- Features a perforated face panel to optimize airflow
- Includes foam gasket to provide a tight fit onto round duct work

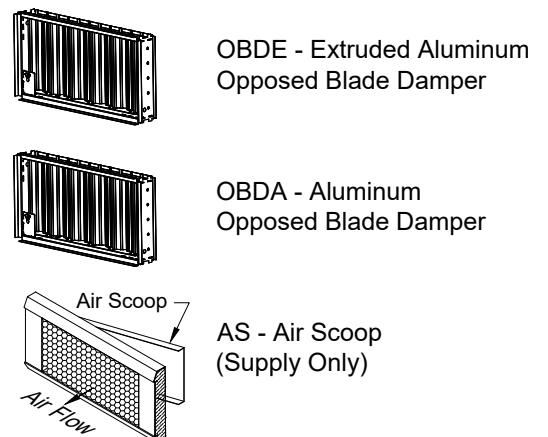
Finishes

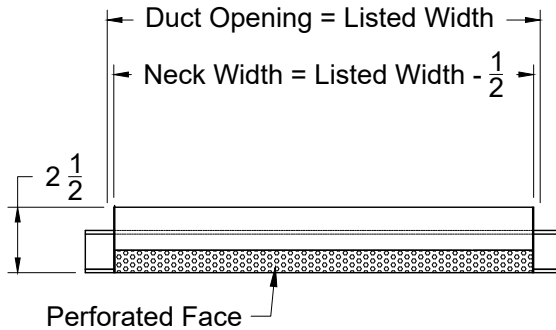
01 - White ¹	03 - Black	¹ White Finish is suitable for a primer coat if field painting is required.
02 - Satin Silver	04 - Clear Anodized	
28 - Custom Color	24 - Mill	

CFD Throw Pattern Visualization

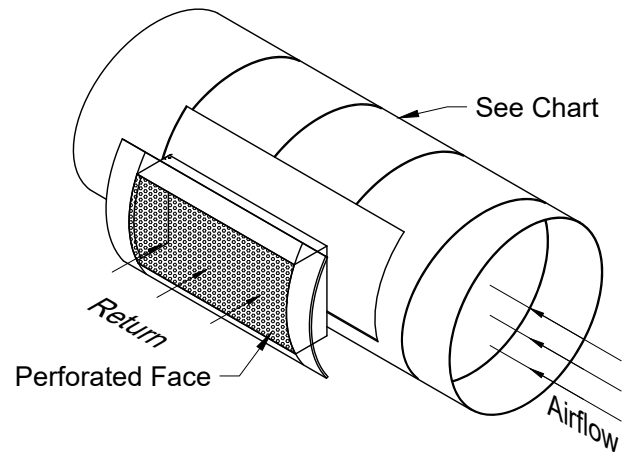


Optional Accessories:

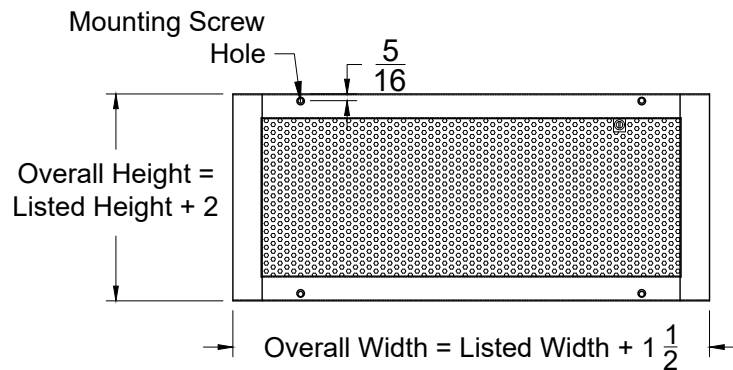




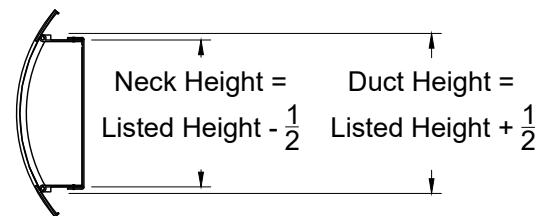
Side View



3D View

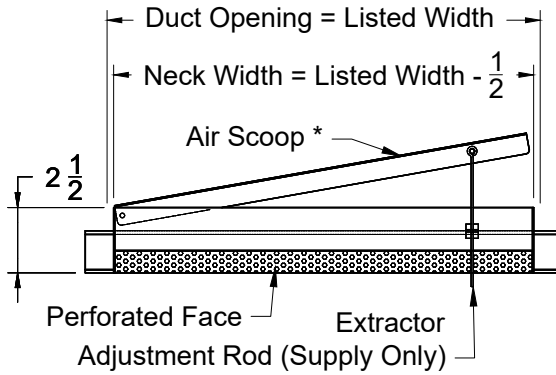


Face View

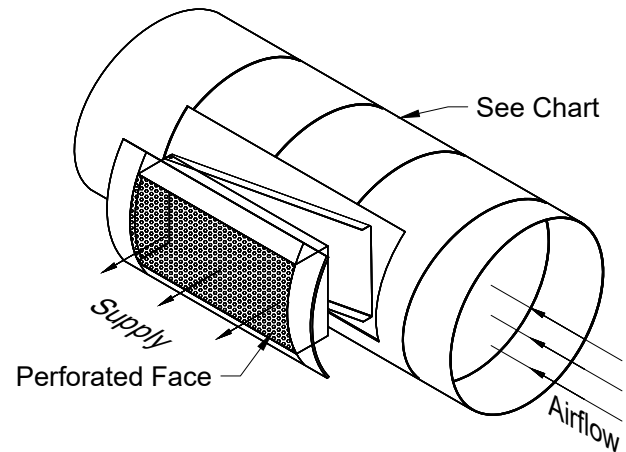
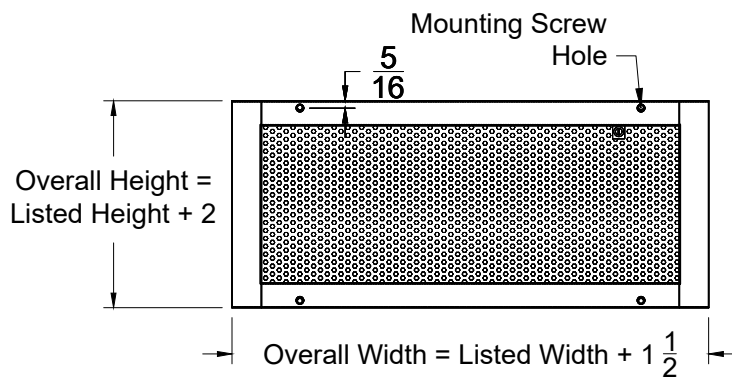
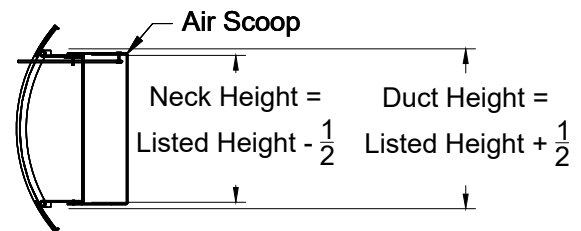


End View

Curved Flange Table		
Listed Height	Duct Diameter Range (inches)	
	Minimum	Maximum
3	6	16
4	8	36
6	10	36
8	10	36
10	14	36
12	16	36

SDPF-C-AL - Industrial Spiral Duct Grille
Aluminum, Perforated Face, Curved Flange - Supply

Side View

* Air Scoop is Standard construction on Supply Only


3D View

Face View

End View

Curved Flange Table		
Listed Height	Duct Diameter Range (inches)	
	Minimum	Maximum
3	6	16
4	8	36
6	10	36
8	10	36
10	14	36
12	16	36