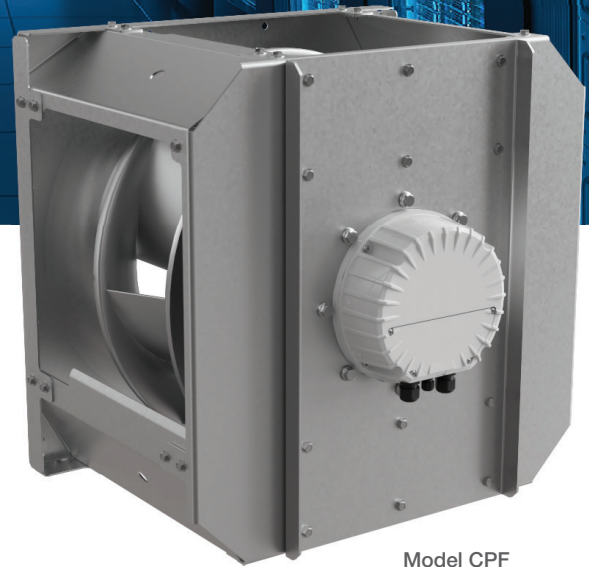


Model CPF

COMPACT PLENUM FAN



Model CPF
Compact Plenum Fan

A **Compact** solution for **Energy-Efficient** Plenum Fans

Greenheck's compact plenum fan (model CPF) has been designed to offer reliable, efficient performance for demanding applications. The CPF is ideal for fan array applications in custom air handlers, large fan coil units, and air handler fan retrofits.

Performance

- Up to 14,800 cfm (single fan)
- Up to 7.6 in. wg of static pressure

Fan Features

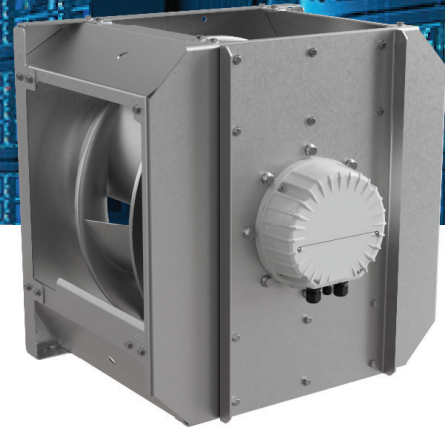
- Welded aluminum CFD-optimized airfoil impeller
- Precision stamped inlet venturi with single pressure tap
- Galvanized steel frame
- Balanced to meet BV-4 Filter-in vibration limit of 0.15 in./s

Motor Features

- EC motor with IE4 efficiency
- RS-485 Modbus communication
- 0-10V input
- Digital input for run/stop
- Relay output for status

Model CPF

COMPACT PLENUM FAN



Performance

Fan Size	Motor HP	V/C/P	Max RPM	Weight (lbs)	Max Airflow (CFM)	Max SP (in. wg)
CPF-400	7.5	460/60/3	2700	91	7,100	6.0
CPF-450	7.5	460/60/3	2700	112	8,900	7.6
CPF-500	7.5	460/60/3	2525	128	11,300	6.9
CPF-560	7.5	460/60/3	1800	161	11,700	6.3
CPF-630	7.5	460/60/3	1675	195	14,800	5.5

Dimensions (inches)

FAN SIZE	400	450	500	560	630
A	20.92	23.10	25.28	28.50	32.00
B	18.08	19.48	21.42	21.03	23.07
C	9.46	10.55	11.64	13.25	15.00
D	6.31	7.03	7.76	8.83	10.00
CGz	11.30	11.50	12.50	11.80	12.90

